

HECTOR

BHIVE

2024



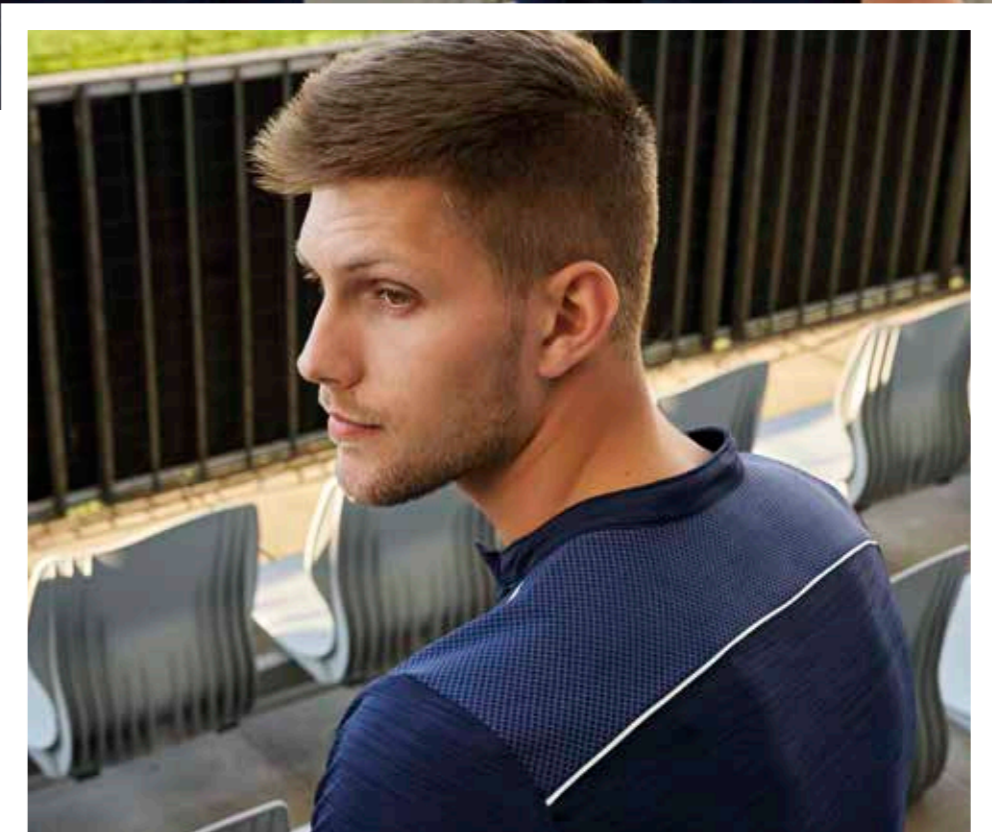
ADULT	S/M/L/XL/XXL	GMOF0C
JUNIOR	XS	GMOF1C

B-HIVE 100% POLYESTER - 135 g/mq

- Manica a giro
- Collo Coreana e fintino con un bottone
- Carrè con tessuto al rovescio
- Code di topo sulle spalle
- Polso manica corta in tessuto
- Inserti laterali in contrasto

- Set-in sleeves
- Mandarin collar and placket with one button
- Yoke in reversed fabric
- Rattail trim on the shoulders
- Short sleeves with fabric cuff
- Contrasting inserts on sides

- Manches montées
- Col droit et patte avec un bouton
- Pièce carrée avec tissu retourné
- Queues de rat sur les épaules
- Poignets manches courtes en tissu
- Pièces latérales en contraste



DIAMANTIS

2024



ADULT S/M/L/XL/XXL/3XL/4XL

FM870C

JUNIOR YXS/XXS/XS

FM871C

MUNDIAL 100% POLYESTER - 145 g/mq

- Inserto in transfer
- Manica raglan
- Parasudore interno elastico
- Girocollo
- Fettucce in contrasto
- Sublimated insert
- Raglan sleeve
- Internal elastic neck tape
- Crew neck
- Stripes in contrast
- Insert en sublimation
- Manche raglan
- Bande de propreté interne élastique
- Ras de cou
- Binding en contraste



19540
black/green fluo/white



05120
white/red/navy



05210
white/blue/navy



55690
white/black/after eight



05850
green/grey/white



05730
yellow/black/anthracite



00660
red/yellow/white



00670
red/black/white



03280
maroon/grey/white



06640
blue/navy/white



07430
navy/grey/white



02060
navy/red/white



03480
navy/yellow/white



08860
black/orange fluo/white



07780
black/anthracite/white

DREAM WOMAN
SPECIAL ORDER

CUSTOM
SUBLIMATION

IT FITS LIKE
LENNY

ONLY COLOURS
DIAMANTIS SHIRT

ADULT S/M/L/XL/XXL/3XL PMJI3C

JUNIOR YXS/XXS/XS PMJI4C

MIN. 50 PCS min. 10 per size with multiples of 2



BRIAN

► BRIGIT WOMAN MODEL

2022



ADULT S/M/L/XL/XXL/3XL/4XL

FM930C

JUNIOR

XS

FM931C

TECHNOSTRETCH 100% POLYESTER - 108 g/mq

- Manica a giro
- Collo a V con parasudore elastico interno
- Maniche e fondo maglia con orlo
- Inserto laterale in contrasto
- Set-in sleeves
- V-neck with internal elastic neck-tape
- Hemmed sleeves and shirt bottom
- Contrasting insert on sides
- Manches montées
- Col V avec bande de propreté interne élastique
- Manches et bas du maillot avec ourlet
- Insert latérale en contraste



00500
red/white



00010
white



01500
blue/white



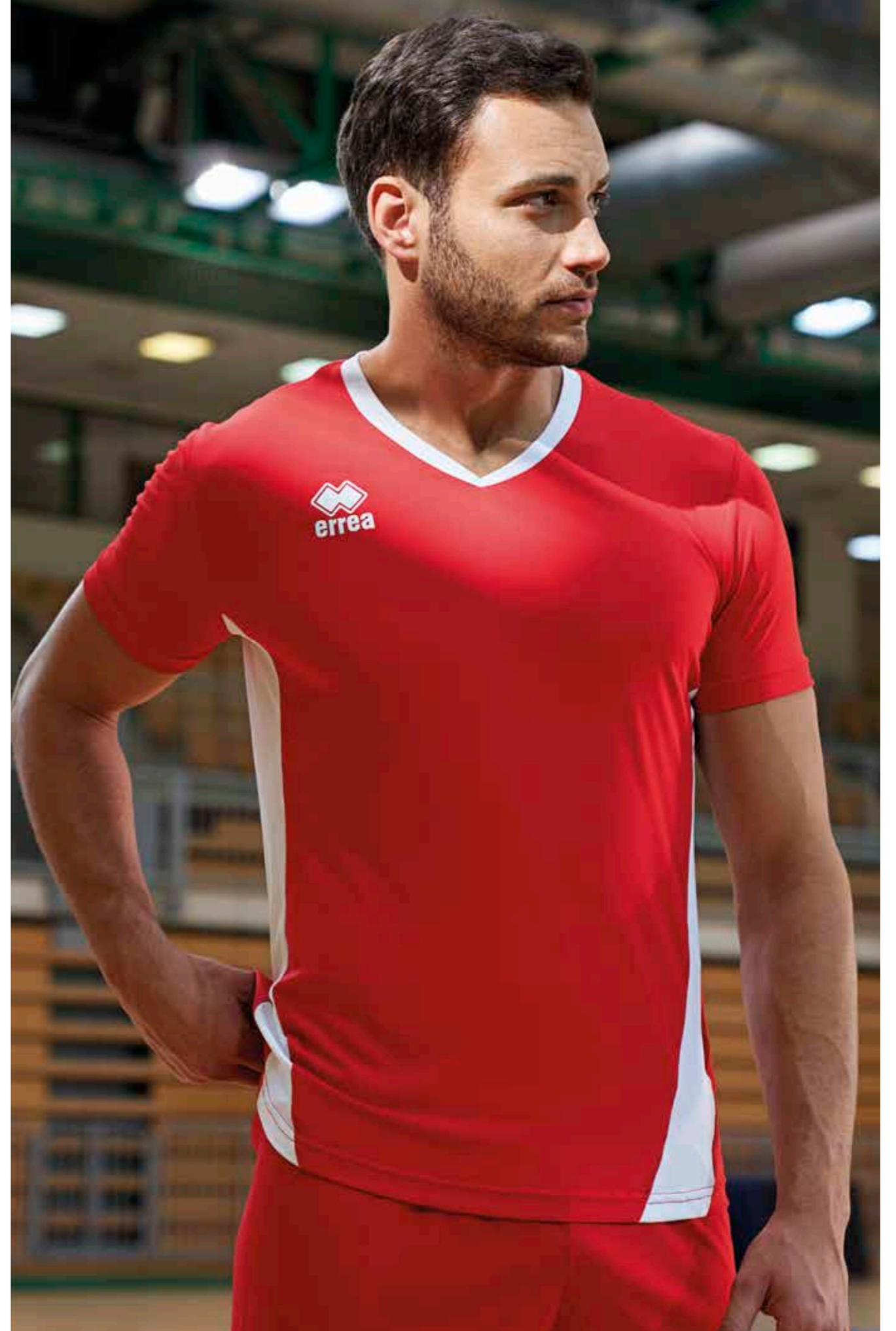
01900
navy/white



00900
green/white



02500
black/white



TI-MOTHY



2023



ADULT

S/M/L/XL/XXL/3XL

FMA20C

JUNIOR

YXS/XXS/XS

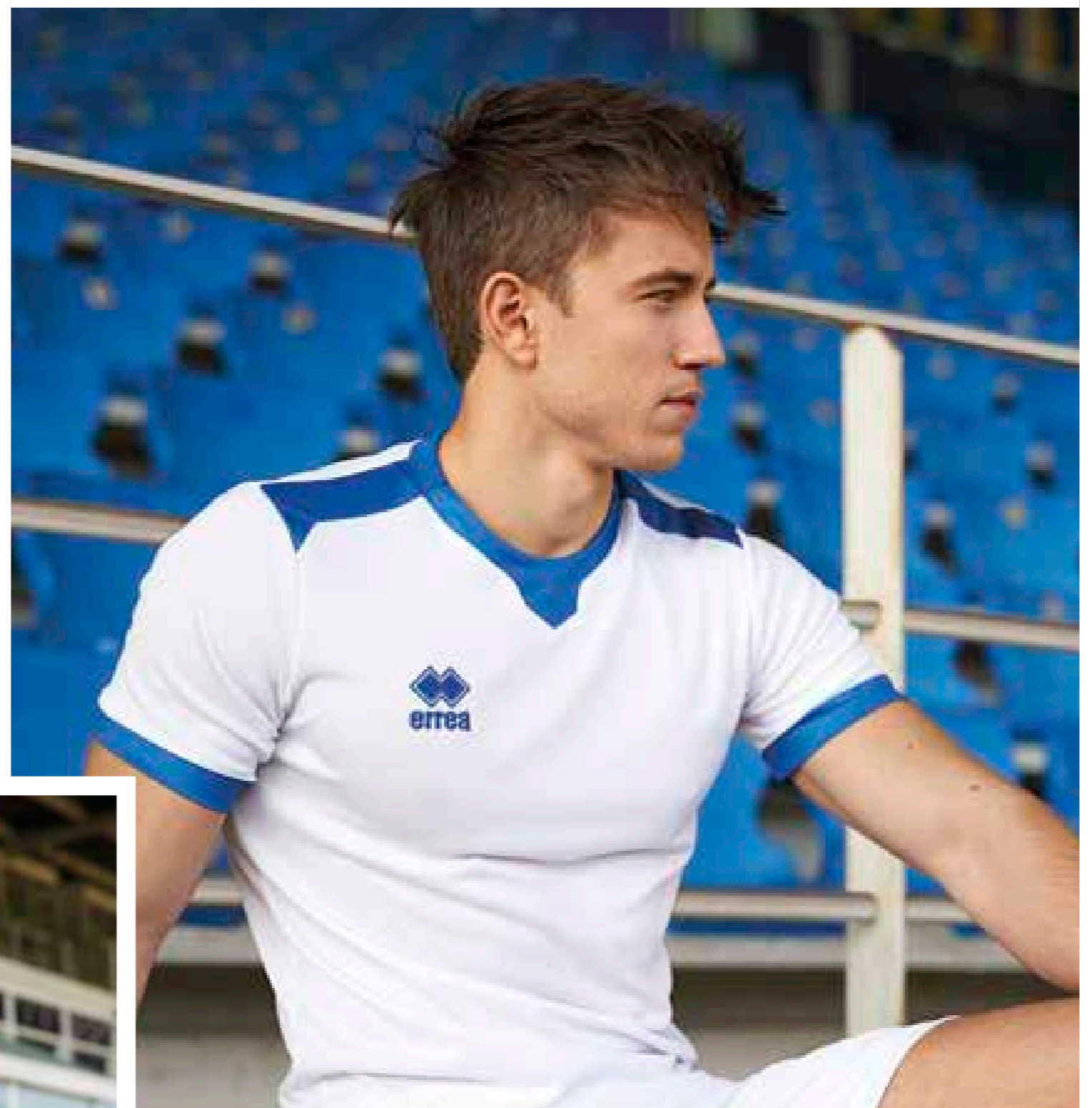
FMA21C

TI-ENERGY 3.0 100% POLYESTER - 130 g/mq

- Filato Ti-energy antivirale e antibatterico
- Manica a giro
- Collo a giro con inserto e parasudore interno elastico
- Polso e orlo sul fondo

- Ti-energy anti-viral and anti-bacterial fabric
- Set-in sleeves
- Crew neck with insert and internal elastic neck tape
- Cuff and hem on bottom

- Ti-energy tissu anti-viral et antibactérien
- Manches montées
- Col rond avec insert et bande de propreté interne élastique
- Poignet et ourlet au le bas



BRANDON

2025



ADULT	S/M/L/XL/XXL	GMOA0C
JUNIOR	XXS/XS	GMOA1C

SKIN 100% POLYESTER - 125 g/mq

- Manica a giro
- Girocollo
- Parasudore elastico interno
- Manica corta con orlo
- Maglia bicolore taglia e cuci
- Set-in sleeves
- Round neck
- Internal elastic neck tape
- Short sleeves with hem
- Two-colour cut and sew shirt
- Manches montées
- Col rond
- Bande de propreté interne
- Manches courtes avec ourlet
- Maillot bicolore patchwork



01520
blue/yellow



00210 white/red 00280 white/navy 00260 white/blue 00310 white/black 03100 maroon/white 03140 maroon/sky blue



00500 red/white 01900 navy/white 01500 blue/white 02500 black/white 00900 green/white



01920 navy/yellow 00780 yellow/navy 00810 yellow/black 00730 yellow/green 04950 amber/black



02810 orange/black 00610 red/black 00580 red/navy 01910 navy/red 01180 sky blue/navy



41920 after eight/black 68860 military green/black

BRENDA WOMAN SPECIAL ORDER



IT FITS LIKE
LENNY



ADULT	S/M/L/XL/XXL	PML03C
JUNIOR	YXS/XXS/XS	PML04C

MIN. 50 PCS min. 10 per size with multiples of 2



LEX

2022



ADULT S/M/L/XL/XXL/3XL/4XL

FM820C

MUNDIAL 100% POLYESTER - 145 g/mq

UTILITY 100% POLYESTER - 145 g/mq

- Manica a raglan
- Collo a giro e parasudore interno elastico
- Cuciture ribattute a 2 aghi
- Inserti in tessuto Utility e Skin
- Fondo maglia con orlo
- Raglan sleeves
- Crew neck with internal elastic neck tape
- Reinforced stitchings
- Inserts in Utility and Skin fabric
- Hemmed shirt bottom
- Manches raglan
- Col rond avec bande de propreté interne élastique
- Coutures renforcées
- Inserts en tissu Utility et Skin
- Bas du maillot avec ourlet



00410
white/navy/red



06640
blue/navy/white



03480
navy/yellow/white



02060
navy/red/white



00670
red/black/white



01070
green/black/white



19100
white/black/anthracite



05210
white/blue/navy

LINDA WOMAN SPECIAL ORDER

- Cuciture ribattute a 2 aghi
- Reinforced stitchings
- Coutures renforcées



IT FITS LIKE
LENNY

ONLY COLOURS
LEX SHIRT

ADULT S/M/L/XL/XXL/3XL

PMJF3C

JUNIOR YXS/XXS/XS

PMJF4C

MIN. 50 PCS min. 10 per size with multiples of 2



EVERTON

► MARION WOMAN MODEL

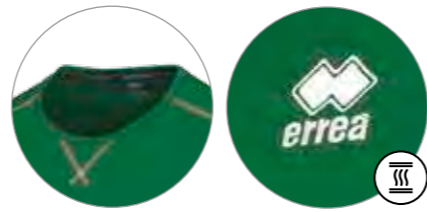
2024



ADULT	S/M/L/XL/XXL/3XL	EM1R0C
JUNIOR	YXS/XXS/XS	EM1R1C
KID	2YXS	EM1R2C

UTILITY 100% POLYESTER - 145 g/mq

- Manica a giro
- Collo a giro con parasudore interno elastico
- Cuciture con copertura a tre aghi in contrasto
- Inserti laterali per una migliore vestibilità
- Set-in sleeves
- Crew neck with internal elastic neck-tape
- Three-needle over stitching in contrasting colour
- Side panels for improved wearability
- Manche montée
- Col rond avec bande de propreté interne élastique
- Coutures avec couverture à trois aiguilles, en contraste
- Empiècements latéraux pour une meilleure ligne



00040
green



00010
white



03320
green fluo



03310
yellow fluo



00030
yellow



03340
orange fluo



35990
cyan



00070
blue



00090
navy



00020
red



00150
maroon

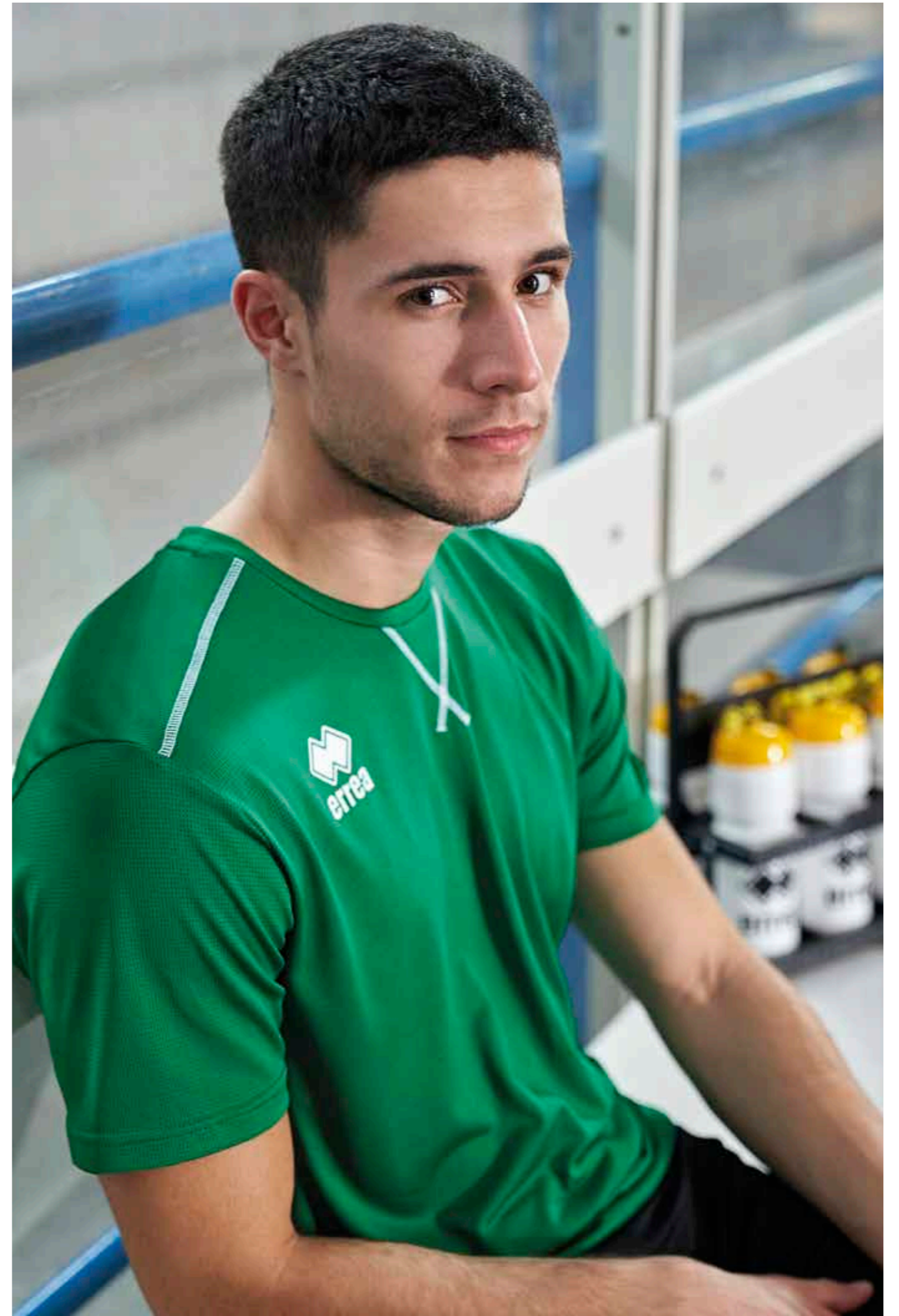


00120
black

EVERTON LONG SLEEVES SPECIAL ORDER

ONLY COLOURS **EVERTON** SHIRT

MIN. 16 PCS min. 4 per size with multiples of 2



PROFESSIONAL 3.0

2024			ADULT S/M/L/XL/XXL/3XL/4XL/5XL	FM410C
			JUNIOR YXS/XXS/XS	FM411C

100% COTTON - 140 g/mq

- Manica corta a giro
- Collo a giro
- Cucitura a tre aghi in contrasto sul collo
- Set-in sleeves
- Crew neck
- Three-needle stitching in contrasting colour on collar
- Manches montées
- Col rond
- Couture particulière à trois aiguilles en contraste sur le col



00020
red



00010
white



00070
blue



00090
navy



00120
black

PRAGA 3.0

B-HIVE

2022				ADULT S/M/L/XL/XXL/3XL	FM950C
				JUNIOR YXS/XXS/XS	FM951C

B-HIVE 100% POLYESTER - 135 g/mq

- Manica a giro con polso
- Collo a camicia con 2 bottoni
- Applicazione verticale nel fintino in contrasto
- Set-in sleeves with cuff
- Shirt-collar with placket neck with buttons
- Vertical application in contrast
- Emmanchure avec poignet
- Col chemise avec deux boutons
- Double couche verticale en contraste



01900
navy/white



00260
white/blue



00280
white/navy



01500
blue/white



00500
red/white



02500
black/white

PROFESSIONAL 3.0 SINGLET

2024			ADULT S/M/L/XL/XXL/3XL/4XL/5XL	FM420S
			JUNIOR YXS/XXS/XS	FM421S

100% COTTON - 140 g/mq

- Collo a giro
- Cucitura a tre aghi in contrasto sul collo
- Crew neck
- Three-needle stitching in contrasting colour on collar
- Col rond
- Couture particulière à trois aiguilles en contraste sur le col



00090
navy



00010
white



00120
black

DOMINIC

2024



ADULT S/M/L/XL/XXL/3XL/4XL

FM890C

JUNIOR

YXS/XXS/XS

FM891C

MUNDIAL 100% POLYESTER - 145 g/mq

- Inserto in transfer
- Manica raglan
- Collo a camicia con due bottoni
- Fettucce in contrasto
- Sublimated insert
- Raglan sleeve
- Shirt collar with two buttons
- Stripes in contrast
- Insert en sublimation
- Manches raglan
- Col chemise avec deux boutons
- Binding en contraste



05120
white/red/navy



04370
white/navy/grey



00670
red/black/white



06640
blue/navy/white



07780
black/anthracite/white



07430
navy/grey/white



02060
navy/red/white



03480
navy/yellow/white

DARYA WOMAN

2024



ADULT S/M/L/XL/XXL/3XL

FM900C

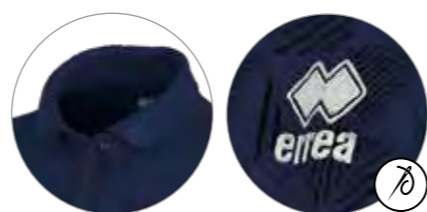
JUNIOR

YXS/XXS/XS

FM901C

MUNDIAL 100% POLYESTER - 145 g/mq

- Inserto in transfer
- Manica raglan
- Collo a camicia con due bottoni
- Fettucce in contrasto
- Sublimated insert
- Raglan sleeve
- Shirt collar with two buttons
- Stripes in contrast
- Insert en sublimation
- Manches raglan
- Col chemise avec deux boutons
- Binding en contraste



02060
navy/red/white



05120
white/red/navy



04370
white/navy/grey



00670
red/black/white



06640
blue/navy/white



07430
navy/grey/white



03480
navy/yellow/white



07780
black/anthracite/white



LUIS

2022



ADULT S/M/L/XL/XXL/3XL/4XL

FM710C

JUNIOR YXS/XXS/XS

FM711C

MUNDIAL 100% POLYESTER - 145 g/mq

UTILITY 100% POLYESTER - 145 g/mq

- Manica a raglan
- Collo a camicia con due bottoni
- Inserti in tessuto Utility e Skin
- Manica corta con polso
- Raglan sleeves
- Shirt-collar neck with two buttons
- Inserts in Utility and Skin fabrics
- Short sleeve with cuff
- Manches raglan
- Col chemise avec deux boutons
- Inserts en tissu Utility et Skin
- Manches courtes avec poignet



00670
red/black/white



05210
white/blue/navy

00410
white/navy/red

19100
white/black/anthracite

01070
green/black/white



06640
blue/navy/white

02060
navy/red/white

03480
navy/yellow/white

LEONOR WOMAN

2022



ADULT S/M/L/XL/XXL/3XL/4XL

FM720C

JUNIOR YXS/XXS/XS

FM721C

MUNDIAL 100% POLYESTER - 145 g/mq

UTILITY 100% POLYESTER - 145 g/mq

- Manica a raglan
- Collo a camicia con due bottoni
- Inserti in tessuto Utility e Skin
- Manica corta con polso
- Raglan sleeves
- Shirt-collar neck with two buttons
- Inserts in Utility and Skin fabrics
- Short sleeve with cuff
- Manches raglan
- Col chemise avec deux boutons
- Inserts en tissu Utility et Skin
- Manches courtes avec poignet



00670
red/black/white



05210
white/blue/navy

00410
white/navy/red

19100
white/black/anthracite

01070
green/black/white



06640
blue/navy/white

02060
navy/red/white

03480
navy/yellow/white



ALEX

2025



CUSTOM
SUBLIMATION



ADULT S/M/L/XL/XXL/3XL/4XL/5XL

GM0K0C

JUNIOR YXS/XXS/XS

GM0K1C

MUNDIAL 100% POLYESTER - 145 g/mq

- Manica a giro con polso in tessuto
- Collo Polo con 2 bottoni
- Spacchetti laterali sul fondo
- Set-in sleeves with fabric cuff
- Polo collar with 2 buttons
- Side splits at the bottom
- Manches montées avec poignets en tissu
- Col polo avec deux boutons
- Petites fentes latérales dans le bas



00020
red



00010
white



00150
maroon



00040
green



00070
blue



00090
navy



00120
black

ALEXIS WOMAN

2025



CUSTOM
SUBLIMATION



ADULT S/M/L/XL/XXL

GM0LOC

JUNIOR YXS/XXS/XS

GM0L1C

MUNDIAL 100% POLYESTER - 145 g/mq

- Manica a giro con polso in tessuto
- Collo Polo con 2 bottoni
- Set-in sleeves with fabric cuff
- Polo collar with 2 buttons
- Manches montées avec poignets en tissu
- Col polo avec deux boutons



00020
red



00010
white



00150
maroon



00040
green



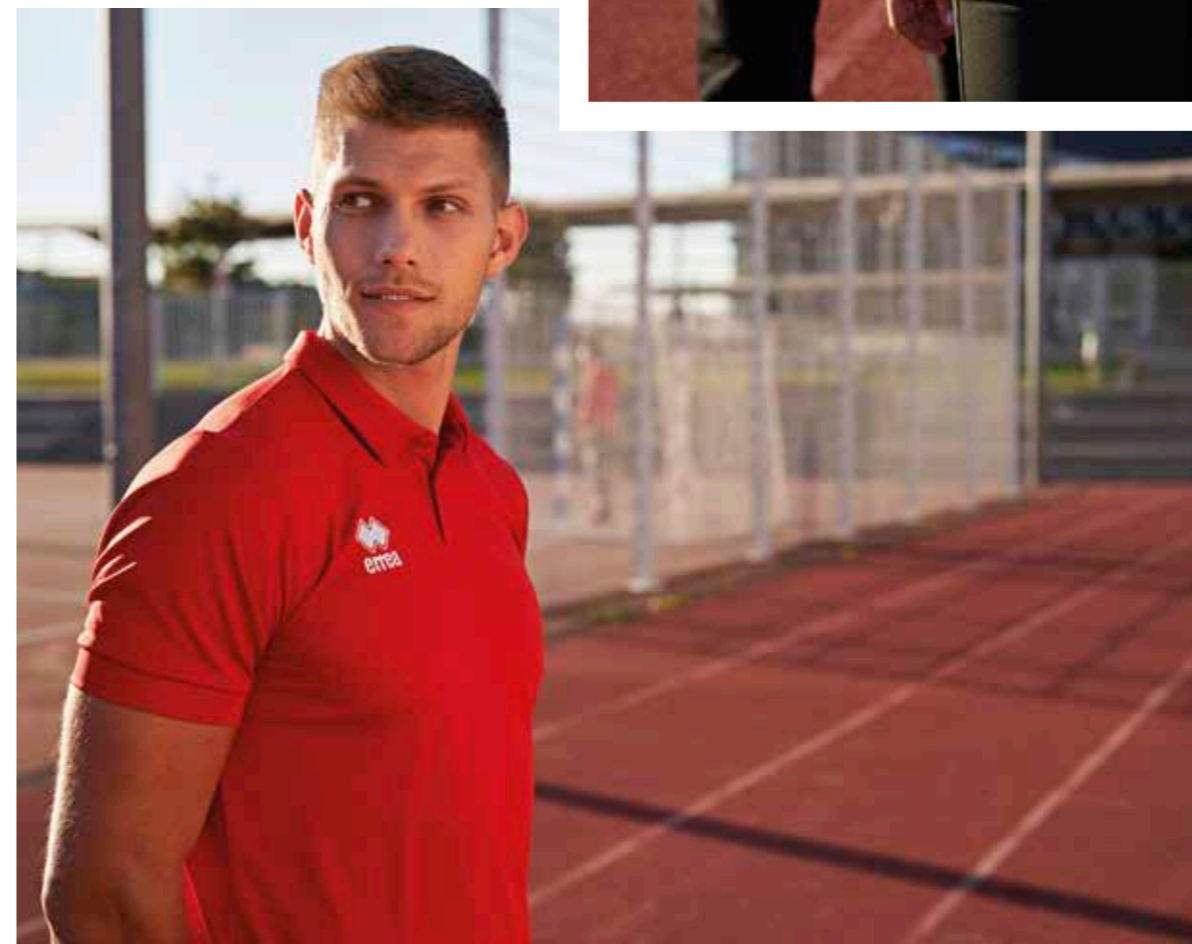
00070
blue



00090
navy



00120
black



BOB

2025



ADULT	S/M/L/XL/XXL/3XL/4XL	GMOBOC
JUNIOR	YXS/XXS/XS	GMOB1C

MUNDIAL 100% POLYESTER - 145 g/mq
SKIN 100% POLYESTER - 125 g/mq

- Polo bicolore taglia e cucì in due tessuti
- Manica a giro con polso in tessuto
- Collo Polo con 2 bottoni
- Spacchetti laterali sul fondo
- Two-colour polo made from two different fabrics
- Set-in sleeves with fabric cuff
- Polo collar with 2 buttons
- Side splits at the bottom
- Polo bicolore patchwork en deux tissus
- Manches montées avec poignets en tissu
- Col polo avec deux boutons
- Petites fentes latérales dans le bas



68860
military green/black



BONNIE WOMAN

2025



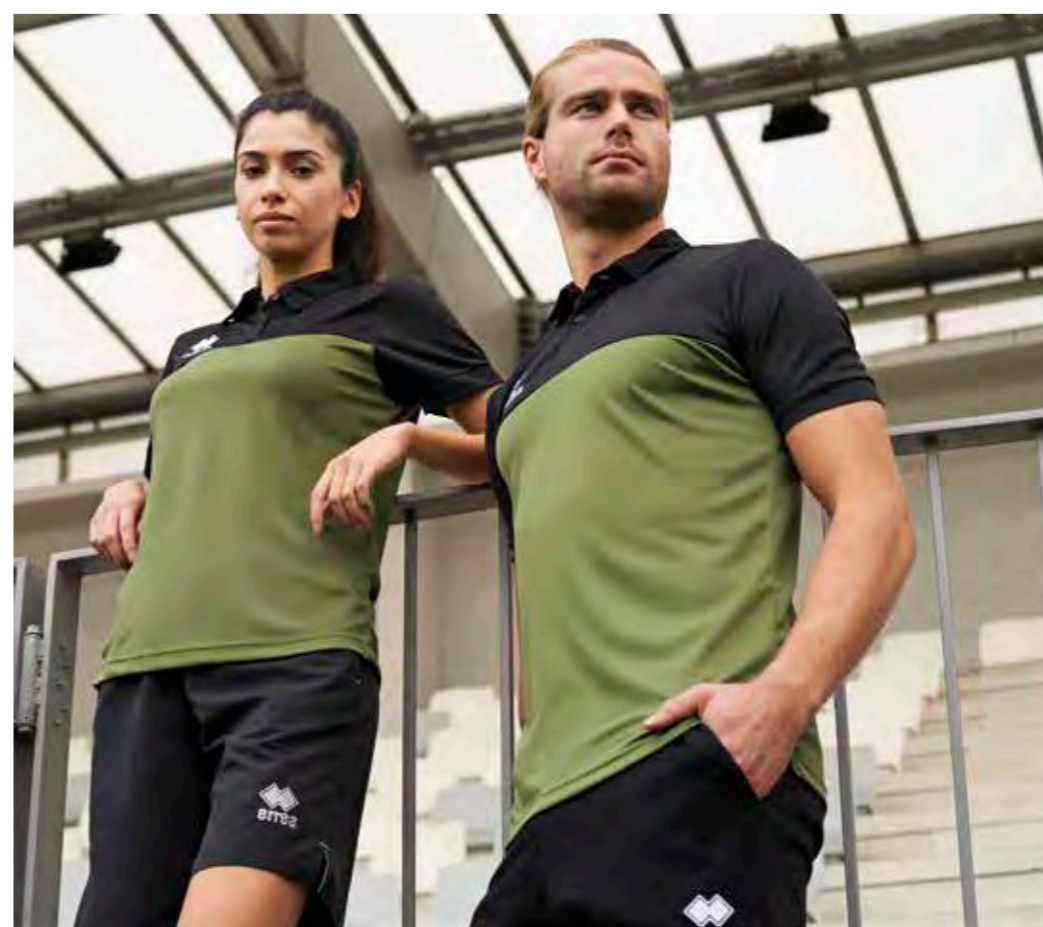
ADULT	S/M/L/XL/XXL	GMOCOC
JUNIOR	YXS/XXS/XS	GMOC1C

MUNDIAL 100% POLYESTER - 145 g/mq
SKIN 100% POLYESTER - 125 g/mq

- Polo bicolore taglia e cucì in due tessuti
- Manica a giro con polso in tessuto
- Collo Polo con 2 bottoni
- Two-colour polo made from two different fabrics
- Set-in sleeves with fabric cuff
- Polo collar with 2 buttons
- Polo bicolore patchwork en deux tissus
- Manches montées avec poignets en tissu
- Col polo avec deux boutons



68860
military green/black



IVAN 3.0



2023		OEKO-TEX® STANDARD 100 CERTIFIED	ADULT S/M/L/XL/XXL/3XL/4XL	FPOA0Z
			JUNIOR YXS/XXS/XS	FPOA1Z

MUNDIAL 100% POLYESTER - 145 g/mq UTILITY 100% POLYESTER - 145 g/mq

- Elastico in vita e laccioli regolabili
- Tasche laterali
- Profili laterali in contrasto
- Inserto sul retro e interno gamba in tessuto Utility
- Elastic waistband and adjustable drawstring
- Side pockets
- Contrasting borders on sides
- Insert on back and inner thigh in Utility fabric
- Élastique à la taille, lacets réglables
- Poches latérales
- Profils latéraux en contraste
- Insert à l'arrière et à l'intérieur des jambes en tissu Utility



01900
navy/white



00500
red/white



01500
blue/white



02500
black/white

VICTOR



2025		OEKO-TEX® STANDARD 100 CERTIFIED	ADULT S/M/L/XL/XXL	GPOE0Z
			JUNIOR YXS/XXS/XS	GPOE1Z

MUNDIAL 100% POLYESTER - 145 g/mq UTILITY 100% POLYESTER - 145 g/mq

- Elastico in vita con laccioli regolabili
- Tasche laterali
- Fondo e interno coscia in tessuto Utility
- Elastic waistband with adjustable drawstring
- Side pockets
- Bottom and inner thigh in Utility fabric
- Élastique à la taille et lacets réglables
- Poches latérales
- Bas et intérieur des cuisses en tissu Utility



00010
white



00090
navy



00120
black

ILIE



2023		OEKO-TEX® STANDARD 100 CERTIFIED	ADULT S/M/L/XL/XXL	EP110Z
			JUNIOR YXS/XXS/XS	EP111Z

MICROSOFT 100% POLYESTER - 115 g/mq PREMIER 82% POLYESTER 18% ELASTANE - 165 g/mq

- Bermuda con elastico in vita e laccioli regolabili
- Tasche laterali
- Inserto interno gamba in tessuto Premier
- Elastic waistband and adjustable drawstring
- Side pockets
- Inner thigh insert in Premier fabric
- Élastique à la taille et lacets réglables
- Poches latérales
- Insert à l'intérieur des jambes en tissu Premier



00090
navy



00010
white



00070
blue

CODY



2024		OEKO-TEX® STANDARD 100 CERTIFIED	ADULT S/M/L/XL/XX/3XL/4XL	FPA00Z
			JUNIOR YXS/XXS/XS	FPA01Z

MICROSOFT 100% POLYESTER - 115 g/mq

- Elastico in vita e laccioli regolabili
- Tasche laterali a filetto
- Elastic waistband and adjustable drawstring
- Side pockets
- Élastique à la taille et lacets réglables
- Poches latérales



00090
navy



00120
black

2022
COLLECTION

DIVINA WOMAN

2024



ADULT	S/M/L/XL/XXL/3XL	FM880S
JUNIOR	YXS/XXS/XS	FM881S

MUNDIAL 100% POLYESTER - 145 g/mq

- Inserto in transfer
- Maglia smancata
- Parasudore interno elastico
- Girocollo
- Fettecucce in contrasto
- Sublimated insert
- Sleeveless T-shirt
- Internal elastic neck tape
- Crew neck
- Stripes in contrast
- Insert en sublimation
- Maillot sans manches
- Bande de propreté interne élastique
- Ras de cou
- Binding en contraste



06640
blue/navy/white



05210
white/blue/navy



00370
white/red/grey



05180
white/green/grey



19100
white/black/anthracite



05120
white/red/navy



06490
red/grey/white



05850
green/grey/white



07780
black/anthracite/white



04270
yellow/navy/white



03480
navy/yellow/white



02060
navy/red/white

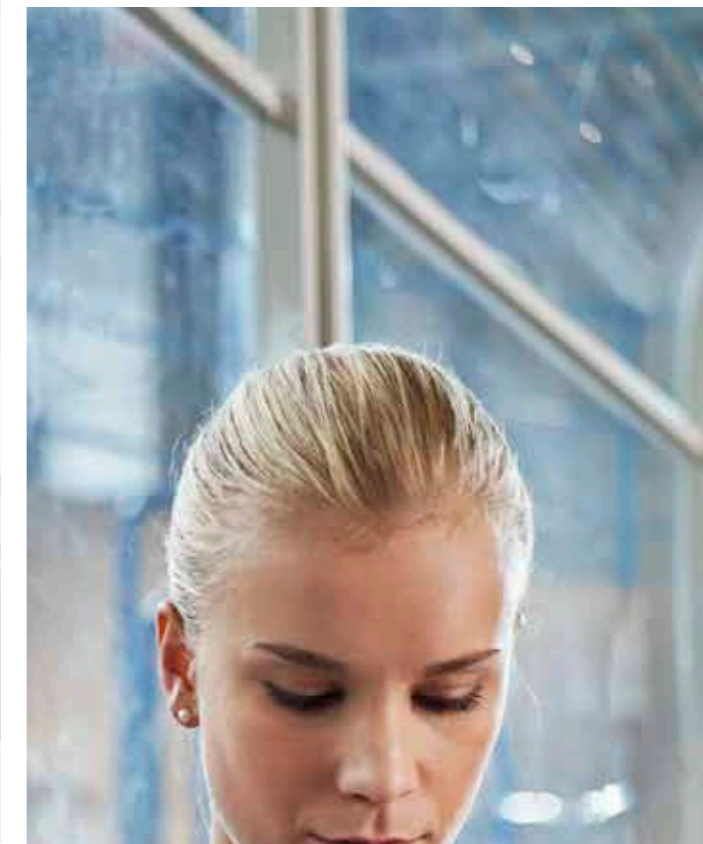
DELSIN MAN SPECIAL ORDER

IT FITS LIKE
SIDE SLEEVELESS

ONLY COLOURS
DIVINA SHIRT

ADULT	S/M/L/XL/XXL/3XL/4XL	PMJH3S
JUNIOR	YXS/XXS/XS	PMJH4S

MIN. 50 PCS min. 10 per size with multiples of 2



LISA WOMAN

2022



CUSTOM
SUBLIMATION



ADULT S/M/L/XL/XXL/3XL

FM830S

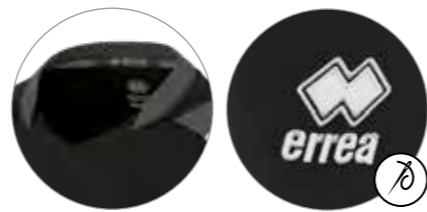
JUNIOR YXS/XXS/XS

FM831S

MUNDIAL 100% POLYESTER - 145 g/mq

UTILITY 100% POLYESTER - 145 g/mq

- Collo a V con doppio fintino e parasudore interno elastico
- Inserts in tessuto Utility e Skin
- Fondo maglia con orlo
- V-neck with double fabric border and internal elastic neck tape
- Inserts in Utility and Skin fabrics
- Hemmed shirt bottom
- Col V avec double patte et bande de propreté interne
- Inserts en tissu Utility et Skin
- Bas du maillot avec ourlet



07780
black/anthracite/white



00410
white/navy/red



05210
white/blue/navy



19100
white/black/anthracite



02060
navy/red/white



03480
navy/yellow/white



06640
blue/navy/white



04270
yellow/navy/white



02850
orange/black/white



33290
fuchsia fluo/black/white

LUCK MAN
SPECIAL ORDER

CUSTOM
SUBLIMATION

IT FITS LIKE
SIDE SLEEVELESS

ONLY COLOURS
LISA SHIRT

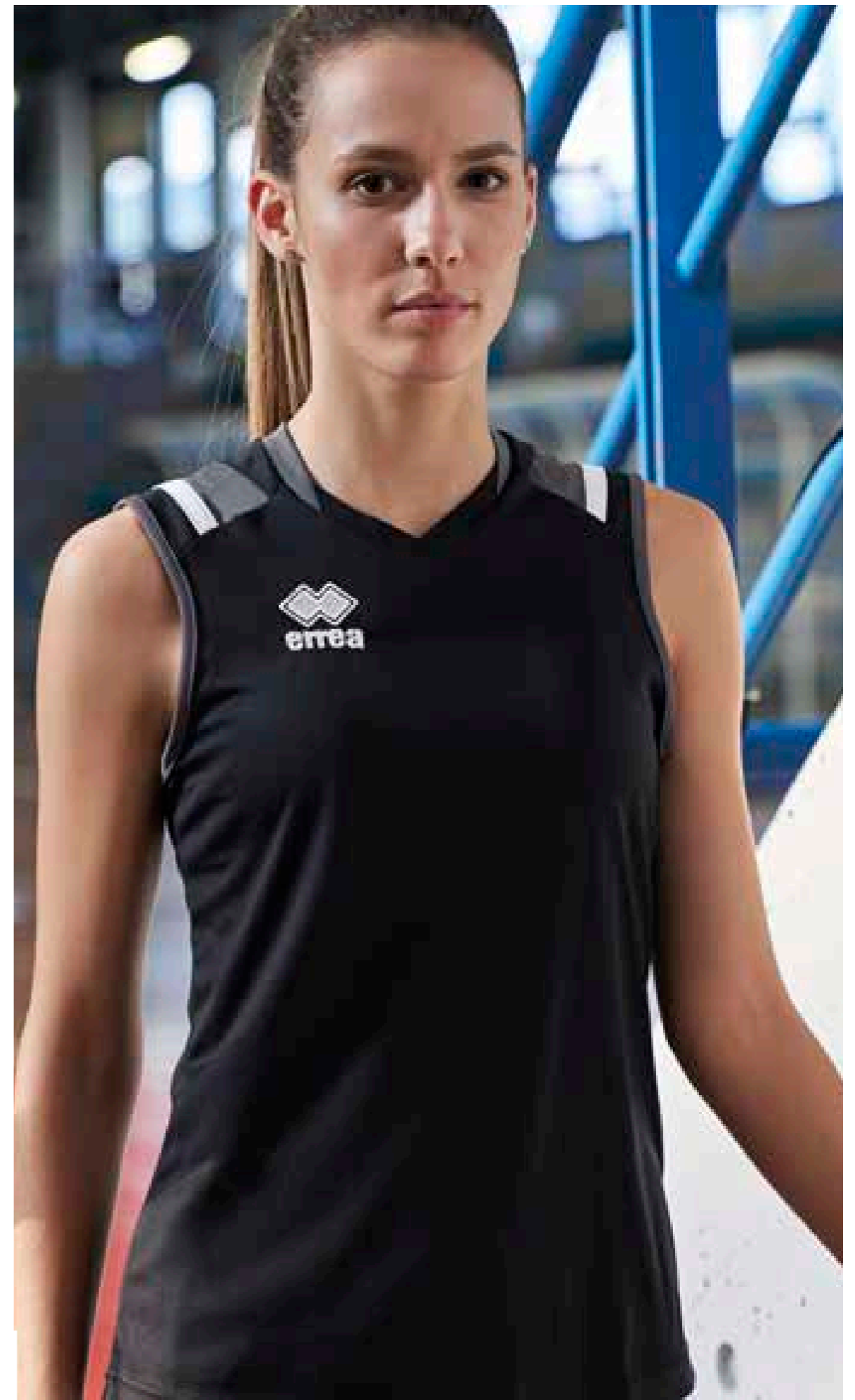
ADULT S/M/L/XL/XXL/3XL/4XL

PMIR3S

JUNIOR YXS/XXS/XS

PMIR4S

MIN. 50 PCS min. 10 per size with multiples of 2



ALISON WOMAN

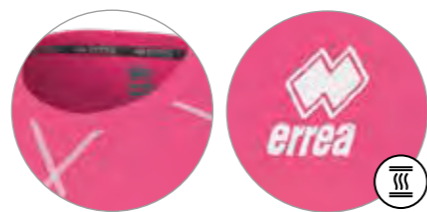
2024



ADULT	S/M/L/XL/XXL/3XL	FM740S
JUNIOR	YXS/XXS/XS	FM741S

UTILITY 100% POLYESTER - 145 g/mq

- Collo a giro con parasudore interno elastico
- Cuciture con copertura a tre aghi in contrasto
- Crew neck with internal elastic neck tape
- Three-needle over stitching in contrasting colour
- Col rond avec bande de propreté interne élastique
- Coutures de couverture à trois aiguilles, en contraste



ALLAN MAN SPECIAL ORDER

IT FITS LIKE **SIDE** SLEEVELESS

ONLY COLOURS **ALISON** SHIRT

ADULT	S/M/L/XL/XXL/3XL	PMJJ3S
JUNIOR	YXS/XXS/XS	PMJJ4S

MIN. 50 PCS min. 10 per size with multiples of 2



KENNY WOMAN

2024



CUSTOM
SUBLIMATION



ADULT	S/M/L/XL/XXL	6M0J0S
JUNIOR	XXS/XS	6M0J1S

UTILITY 100% POLYESTER - 145 g/mq

- Collo a giro e sbracci con bordini in contrasto
- Cuciture piatte in tinta
- Fianchette laterali in contrasto
- Inserti catarifrangenti sul davanti e nel retro
- Crew neck and armholes with contrasting trim
- Flat stitching in matching colour
- Contrasting side panels
- Reflectors on front and back
- Col rond et emmanchures avec bords en contraste
- Coutures plates de même couleur
- Pièces latérales en contraste
- Pièces rétro réfléchissantes avant et arrière



00500
red/white



00300
white/grey



01500
blue/white



01900
navy/white



SMITH WOMAN

2022



ADULT	S/M/L/XL/XXL	FM770S
JUNIOR	XXS/XS	FM771S

UTILITY 100% POLYESTER - 145 g/mq

- Collo a giro e sbracci senza bordini
- Cuciture piatte in contrasto
- Fianchette laterali in contrasto
- Etichetta taglia applicata a caldo
- Tank with crew neck and armholes without edgings
- Flat stitching in contrasting colour
- Contrasting panels on sides
- Heat applied size label
- Débardeur à col rond et emmanchures sans bords
- Coutures plates en contraste
- Empiècements latéraux en contraste
- Étiquette de taille appliquée à chaud



00260
white/blue



00210
white/red



01500
blue/white



15270
cyan/white



04920
yellow fluo/black



04930
orange fluo/black



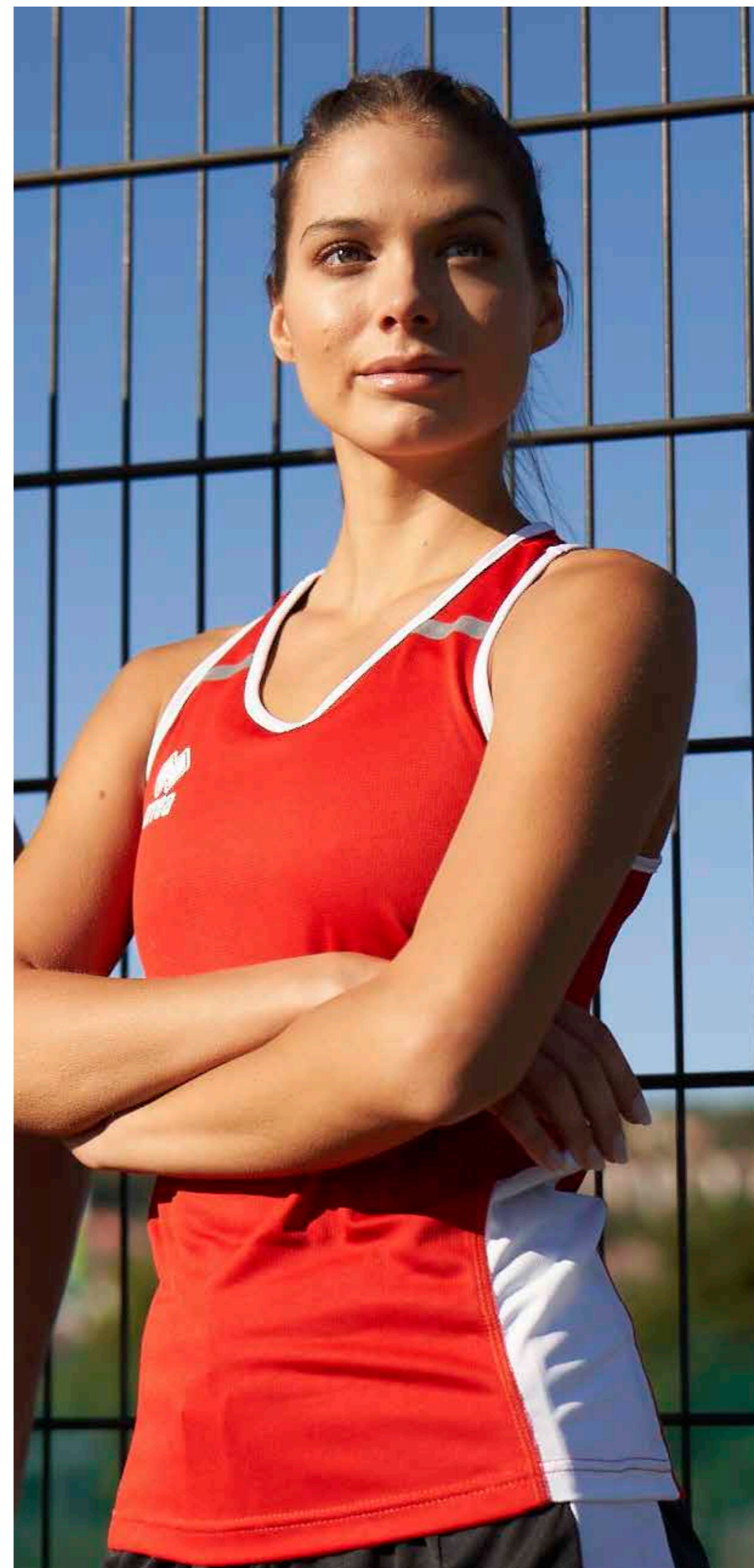
22650
fuchsia fluo/black



08180
black/green fluo



59120
green fluo/black



LENNY WOMAN

► LUCAS MAN MODEL

2022



ADULT S/M/L/XL/XXL/3XL
JUNIOR YXS/XXS/XS

FM690C

FM691C

MUNDIAL 100% POLYESTER - 145 g/mq

UTILITY 100% POLYESTER - 145 g/mq

- Manica a raglan
- Collo a V con doppio fintino e parasudore interno elastico
- Inserti in tessuto Utility e Skin
- Fondo maglia con orlo
- Raglan sleeves
- V-neck with double fabric border and internal elastic neck tape
- Inserts in Utility and Skin fabrics
- Hemmed shirt bottom
- Manches raglan
- Col V avec double patte et bande de propreté interne
- Inserts en tissu Utility et Skin
- Bas du maillot avec ourlet



05210
white/blue/navy



00410
white/navy/red



02060
navy/red/white



03480
navy/yellow/white



06640
blue/navy/white



00670
red/black/white



35770
green fluo/black/white



07780
black/anthracite/white



02850
orange/black/white



33290
fuchsia fluo/black/white



BESSY WOMAN

2025



CUSTOM
SUBLIMATION



ADULT	S/M/L/XL/XXL/3XL	GMOD0C
JUNIOR	XXS/XS	GMOD1C

MUNDIAL 100% POLYESTER - 145 g/mq

- Manica corta a giro
- Collo a V con parasudore interno elastico
- Maglia bicolore taglia e cuci
- Set-in short sleeves
- V-neck with internal elastic neck tape
- Two-colour cut and sew shirt
- Manches courtes montées
- Col en V avec bande de propreté interne
- Maillot bicolore patchwork



01920
navy/yellow



BRIGIT WOMAN

► BRIAN MAN MODEL

2022



ADULT	S/M/L/XL/XXL/3XL	FM940C
JUNIOR	XS	FM941C

TECHNOSTRETCH 100% POLYESTER - 108 g/mq

- Manica a giro
- Collo a V con parasudore elastico interno
- Maniche e fondo maglia con orlo
- Inserto laterale in contrasto
- Set-in sleeves
- V-neck with internal elastic neck-tape
- Hemmed sleeves and shirt bottom
- Contrasting insert on sides
- Manches montées
- Col V avec bande de propreté interne élastique
- Manches et bas du maillot avec ourlet
- Insert latéral en contraste



00500
red/white



MARION WOMAN

▶ EVERTON MAN MODEL

2024



ADULT

S/M/L/XL/XXL

EM1TOC

JUNIOR

YXS/XXS/XS

EM1T1C

UTILITY 100% POLYESTER - 145 g/mq

- Manica a giro
- Collo a giro con parasudore interno elastico
- Cuciture con copertura a tre aghi in contrasto
- Fianchette laterali per una migliore vestibilità
- Set-in sleeves
- Crew neck with internal elastic neck-tape
- Three-needle over stitching in contrasting colour
- Side panels for improved wearability
- Manche montée
- Col rond avec bande de propreté interne élastique
- Coutures de couverture à trois aiguilles, en contraste
- Empiècements latéraux pour une meilleure ligne



03320
green fluo



00010
white



00030
yellow



03310
yellow fluo



03340
orange fluo



00040
green



35990
cyan



00070
blue



00090
navy



00020
red



00150
maroon



00120
black

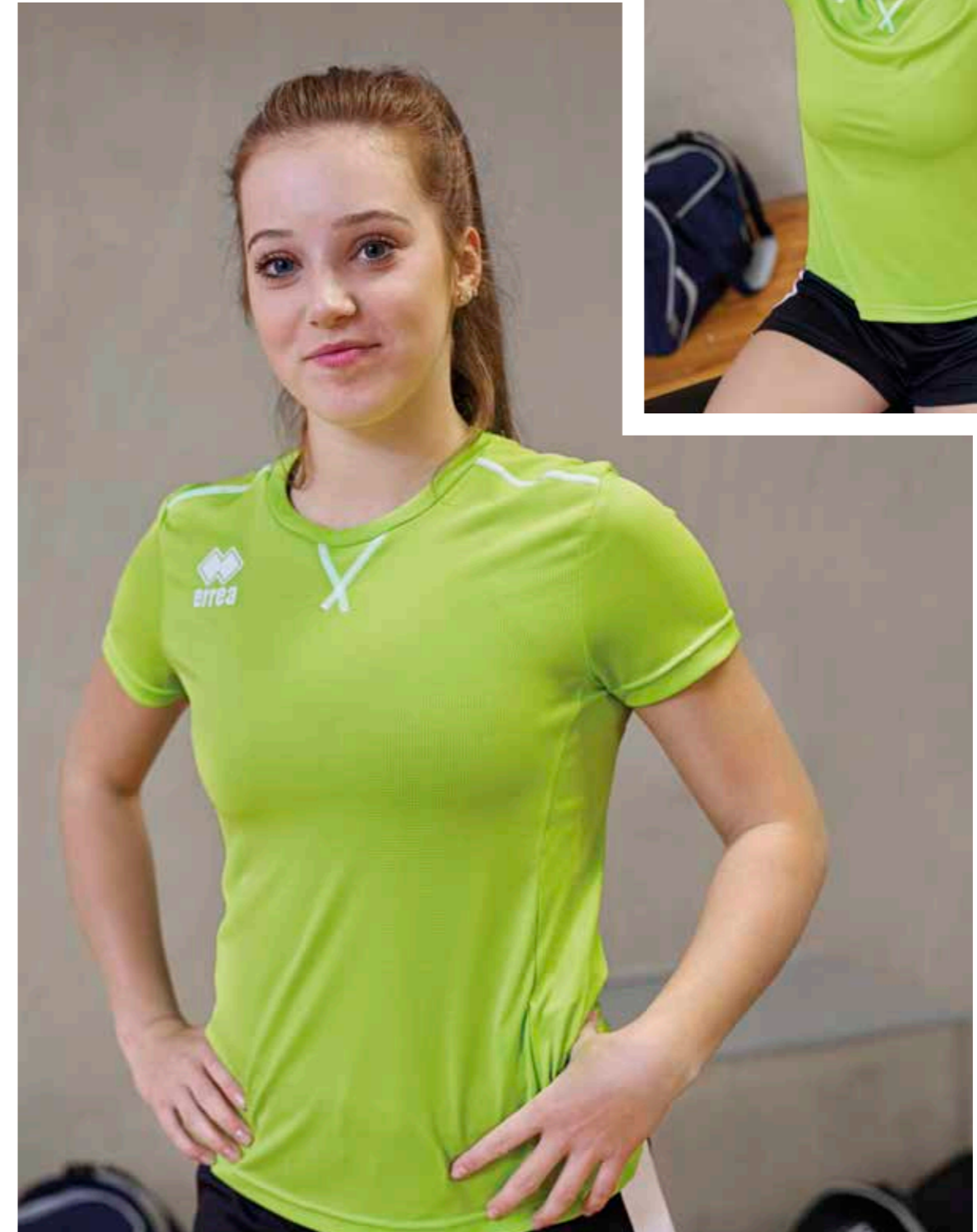


03330
fuchsia fluo

MARION LONG SLEEVES SPECIAL ORDER

ONLY COLOURS MARION SHIRT

MIN. 16 PCS min. 4 per size with multiples of 2



SHIMA



2022



ADULT S/M/L/XL/XXL **FP670Z**
JUNIOR XXS/XS **FP671Z**

UTILITY 100% POLYESTER - 145 g/mq

- Elastico in vita
- Inserti laterali in contrasto
- Slip interno
- Taschino con cerniera sul retro
- Laccioli regolabili
- Elastic waistband
- Contrasting inserts on sides
- Internal underpants
- Zip pocket on back
- Adjustable drawstring
- Élastique à la taille
- Inserts latérales en contraste
- Slip interne
- Petite poche zippée à l'arrière
- Lacets réglables



00500
red/white



01900
navy/white



01500
blue/white



02500
black/white



07720
black/yellow fluo



04610
black/fuchsia fluo



08180
black/green fluo



07830
black/orange fluo



ROS 3.0 WOMAN



2024



ADULT S/M/L/XL/XXL **FP880Z**
JUNIOR YXS/XXS/XS **FP881Z**

MUNDIAL 100% POLYESTER - 145 g/mq

- Minigonna con panta interno
- Elastico in vita
- Miniskirt with undershorts
- Elastic waistband
- Mini-jupe avec short interne
- Élastique à la taille



00070
blue



00010
white



00020
red



00090
navy



00120
black

DOUGLAS 3.0 WOMAN



2024



ADULT S/M/L/XL/XXL/3XL **FP580Z**
JUNIOR YXS/XXS/XS **FP581Z**

SUPERGA 92% COTTON 8% ELASTANE - 200 g/mq

- Lunghezza 3/4
- Elastico in vita
- Carrè sul retro
- 3/4 trousers
- Elastic waistband
- Carrè on the back
- Pantalon 3/4
- Élastique à la taille
- Carrè à l'arrière



00090
navy



00090
navy



00120
black

DALMA WOMAN



2024



ADULT S/M/L/XL/XXL/3XL **FP960Z**
JUNIOR YXS/XXS/XS **FP961Z**

SUPERGA 92% COTTON 8% ELASTANE - 200 g/mq

- Leggings aderenti con elastico in vita
- Fondo con orlo
- Carrè sul retro
- Skinny leggings with elastic waistband
- Ankle with hem
- Carrè on the back
- Leggings moulants avec élastique à la taille
- Bas avec ourlet
- Carrè à l'arrière



00090
navy



00090
navy



00120
black

EMMA WOMAN



2023



ADULT S/M/L/XL **FP990Z**
JUNIOR XXS/XS **FP991Z**

MUNDIAL 100% POLYESTER - 145 g/mq

- Panta corto con elastico in vita e laccioli regolabili
- Bordini in contrasto
- Shorts with elastic waistband and adjustable drawstring
- Edgings in contrast
- Short avec élastique à la taille et lacets réglables
- Liserés en contraste



01900
navy/white



02500
black/white

CARLYS WOMAN SPECIAL ORDER

MIN. 50 PCS min. 10 per size with multiples of 2



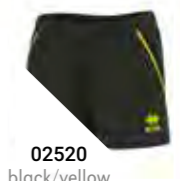
ADULT S/M/L/XL/XXL **FP990Z**
JUNIOR YXS/XXS/XS **FP991Z**

MUNDIAL 100% POLYESTER - 145 g/mq UTILITY 100% POLYESTER - 145 g/mq

- Elastico in vita e laccioli regolabili
- Tasche laterali
- Profili laterali in contrasto
- Inserto sul retro e interno gamba in tessuto Utility
- Elastic waistband and adjustable drawstring
- Side pockets
- Contrasting borders on sides
- Insert on back and inner thigh in Utility fabric
- Élastique à la taille, lacets réglables
- Poches latérales
- Profils latéraux en contraste
- Insert à l'arrière et à l'intérieur des jambes en tissu Utility



01900
navy/white



02520
black/yellow



01500
blue/white

ALPHA

2024		ADULT	M:35/38-L:39/42-XL:43/47	FCOA0Z
		JUNIOR	XS: 31/34	FCOA1Z

80% COTTON 20% ELASTANE

- Compressione sull'arco plantare
- Compression on arch of the foot
- Compression sur voûte plantaire
- Tallone e punta rinforzati
- Reinforced heel and toe
- Talon et pointe renforcés



00280
white/navy

BEST

2024		ADULT		FCOB0Z
		JUNIOR		FCOB1Z

45% COTTON 45% POLYESTER 10% ELASTANE

- Altezza sopra alla caviglia
- Particolarmente indicata per uso in allenamento
- Height above the ankle
- Particularly recommended for training
- Chaussettes bas en coton montant au-dessus de la cheville
- Spécialement indiquées pour l'entraînement



00010
white



00090
navy



00120
black

SKIP

2024		ADULT	M:35/38-L:39/42-XL:43/47	A422
		JUNIOR	XS: 31/34	A423

80% COTTON 16% NYLON 4% ELASTANE

- Calza corta in cotone
- Zona traspirante sul collo del piede
- Cotton ankle socks
- Breathable zone on instep
- Chaussettes bas en coton
- Zone respirante sur le cou-de-pied



000190
navy/white



000028
white/navy



000250
black/white

JUMP

2024		ADULT	M:35/38-L:39/42-XL:43/47	FA2ROZ

50% COTTON 50% ELASTANE

- Calza corta in cotone
- Zona traspirante sul collo del piede
- Cotton ankle socks
- Breathable zone on instep
- Chaussettes bas en coton
- Zone respirante sur le cou-de-pied



02500
black/white



00280
white/navy

COMFORT

2024		SIZE	ONE SIZE	A426

80% COTTON 16% NYLON 4% ELASTANE

- Altezza caviglia
- Zona traspirante sul collo del piede
- Ankle socks
- Breathable zone on instep
- Hauteur cheville
- Zone respirante sur le coup-de-pied



000028
white/navy



000250
black/white

TRAINING

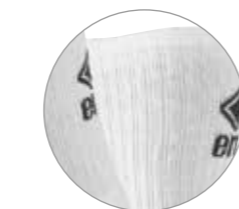
2024		ADULT	M:35/38-L:39/42-XL:43/47	A428
		JUNIOR	XS: 31/34	A429

55% COTTON 40% NYLON 5% ELASTANE

- Altezza polpaccio
- Zona traspirante sul polpaccio
- Calf-length socks
- Breathable zone on calf
- Chaussettes hauteur mollet
- Zone respirante sur le mollet



000031
white/black



000190
navy/white

JACOB

2024



ADULT S/M/L/XL/XXL/3XL/4XL/5XL
JUNIOR YXS/XXS/XS

FG0X0Z
FG0X1Z

BASIC 100% POLYESTER - 200 g/mq

- Cappuccio regolabile con laccioli e cerniera full-zip
- Polsini e fascione in costina elasticizzata
- Interno cappuccio in Mesh

- Hooded jacket with adjustable drawstring and full-zip
- Cuffs in elasticated ribbing
- Internal hood in Mesh

- Veste avec capuche réglable avec lacets et zip de haut en bas
- Poignets et bande à la taille en bord-côte
- Tissu à l'intérieur du capuche en Mesh



FLANN
TROUSERS



KEY
TROUSERS



NEVIS 3.0
TROUSERS



MILO 3.0
TROUSERS

VANESSA 3.0
WOMAN TROUSERS



JONAS

2024



ADULT S/M/L/XL/XXL/3XL/4XL/5XL
JUNIOR YXS/XXS/XS

F60F0Z
F60F1Z

BASIC 100% POLYESTER - 200 g/mq

- Felpa con cappuccio regolabile con laccioli
- Hooded top with adjustable drawstring
- Polsini e fascione in costina elasticizzata
- Cuffs and wide waistband in elasticated ribbing
- Interno cappuccio in Mesh
- Internal hood in Mesh
- Veste avec capuche réglable à lacets
- Poignets et bande en bord-côte
- Tissu à l'intérieur du capuche en Mesh



00010
white



00130
orange

00020
red

00040
green

35990
cyan



00070
blue

00090
navy

00120
black

00150
maroon



03320
green fluo

03310
yellow fluo



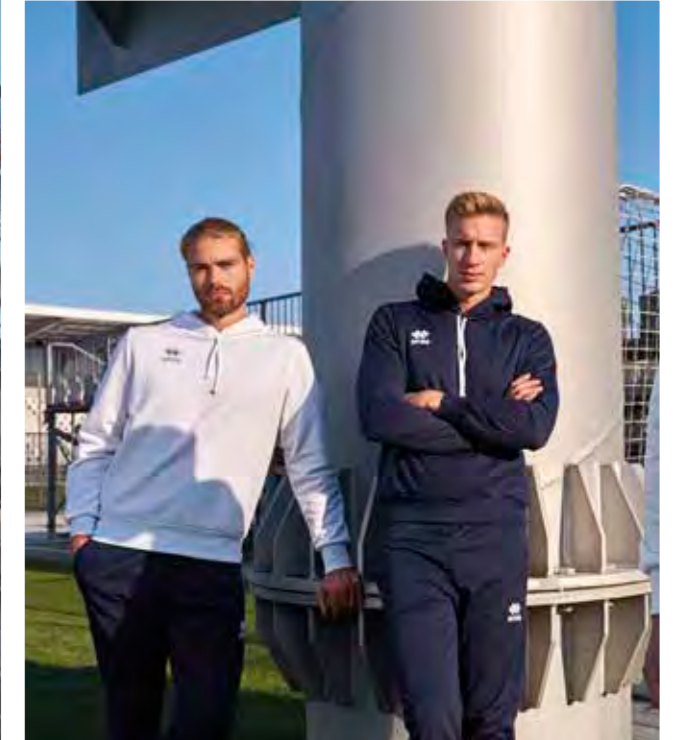
FLANN
TROUSERS

KEY
TROUSERS

NEVIS 3.0
TROUSERS

MILO 3.0
TROUSERS

VANESSA 3.0
WOMAN TROUSERS



DIAMANTIS

ELEGANTE, SOFISTICATO, ORIGINALE.

Traspirazione, isolamento termico, tenuta del calore, libertà di movimento.

Il nuovo coordinato Diamantis, si caratterizza per eleganza grazie alla stripe con stampa transfer che ne definisce l'estetica moderna. L'applicazione delle fettucce permette di sfoggiare con orgoglio i colori della tua squadra. Ideale per chi è alla ricerca di un look moderno e attuale, caratterizzato da dettagli sofisticati che esaltano l'estetica e lo stile.

L'intera gamma di prodotti è realizzata con maniche raglan per garantire la massima libertà di movimento in ogni situazione, in campo e fuori.

I tessuti con cui sono realizzati i capi permettono di creare diverse combinazioni di strati per esaudire le diverse esigenze tecniche per le performance in campo e per il tempo libero.

Isolamento termico, traspirazione e leggerezza rappresentano le caratteristiche distinte di questa linea mentre gli inserti in full garantiscono una protezione termica ottimale. Disponibile in diverse varianti colore, inserto in tinta e fettucce colorate sono state studiate ad hoc per esaltare i tuoi colori societari.

ELEGANT, SOPHISTICATED, ORIGINAL.

Breathability, thermal insulation, heat retention, freedom of movement.

The new Diamantis strip is elegant and characterized by a modern appearance thanks to the insert with sublimation printing. The application of stripes means you can wear your team's colours with pride.

Ideal for anyone seeking a modern and trendy look, characterized by sophisticated details which highlight the overall appearance and style.

The whole range of products is made with raglan sleeves to guarantee maximum freedom of movement in any situation, both on and off the field.

The fabrics used to manufacture the garments make it possible to create different combinations of layers to meet diverse technical requirements for performance on the field and during leisure time.

Thermal insulation, breathability and lightness are the distinctive features of this line, while the inserts in full fabric ensure maximum thermal protection.

Available in various colour schemes, matching insert and coloured stripes, they have been designed ad hoc to highlight your club's colours.

ÉLÉGANT, SOPHISTIQUÉ, ORIGINEL.

Transpiration, isolation thermique, conservation de la chaleur, liberté de mouvement.

La nouvelle tenue Diamantis est caractérisée par l'élégance et l'esthétique moderne que lui confère la bande imprimée par sublimation. L'application des extrarats permet d'arborez avec fierté les couleurs de votre équipe.

Tenue idéale pour tous ceux qui sont à la recherche d'un look moderne et actuel, caractérisé par des détails sophistiqués qui mettent en valeur l'esthétique et le style. La gamme de produits est entièrement réalisée avec des manches raglan pour une liberté maximale de mouvement en toute situation, sur le terrain et en dehors.

Les tissus avec lesquels sont réalisés les articles permettent de créer différentes combinaisons de couches répondant aux diverses exigences techniques pour les performances sur le terrain et pendant les loisirs.

Isolation thermique, transpiration et légèreté sont les caractéristiques distinctives de cette ligne, dans laquelle les empiècements en full garantissent une protection thermique optimale.

Disponibles dans plusieurs variantes de couleur, l'empiecement de teinte identique et les extrarats colorés ont été spécialement étudiés pour rehausser les couleurs de votre club.



LUCAS

RICERCATO, FUNZIONALE, VERSATILE.

Comfort, traspirazione, regolazione del calore corporeo

Il coordinato Lucas presenta una linea elegante, lineare con inserti in contrasto sulle spalle che non ostacolano il naturale movimento grazie a cuciture appositamente studiate, anche durante la gara.

Ideale per chi è alla ricerca di un look classico, attento alla cura dei più minuti dettagli. L'intera gamma di prodotti è realizzata con maniche raglan per garantire la massima libertà di movimento in ogni situazione, in campo e fuori.

I tessuti disponibili permettono di creare soluzioni differenti per le diverse situazioni climatiche. Traspirazione, morbidezza e resistenza sono le caratteristiche tecniche principali di questa linea.

Disponibile in diverse varianti colore a base classica con inserti in contrasto sono ideati per rappresentare al meglio i colori della tua squadra.

REFINED, FUNCTIONAL, VERSATILE.

Comfort, breathability, body temperature regulation.

The Lucas strip presents an elegant, linear look with contrasting inserts on the shoulders which, thanks to the specially designed seams, never hinder natural movements, not even during matches.

Ideal for those seeking a classic look, attentive to even the smallest detail. The whole range of products is made with raglan sleeves to guarantee maximum freedom of movement in any situation, both on and off the field.

The fabrics available make it possible to create different solutions for different climatic conditions.

Breathability, softness and strength are the main technical features of this line. Available in various classic colour schemes with contrasting inserts they are ideal for really showing off your team's colours.

PRISÉ, FONCTIONNEL, VERSATILE.

Confort, transpiration, réglage de la chaleur corporelle

La tenue Lucas possède une ligne élégante, linéaire, avec des empiècements en contraste sur les épaules qui n'entravent pas le mouvement naturel, même pendant les compétitions, grâce à des coutures spécialement étudiées.

Tenue idéale pour tous ceux qui veulent un look classique, attentif au soin des moindres détails.

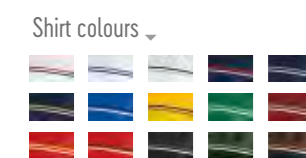
La gamme de produits est entièrement réalisée avec des manches raglan pour une liberté maximale de mouvement en toute situation, sur le terrain et en dehors.

Les tissus disponibles permettent de créer de nombreuses solutions répondant aux différentes conditions climatiques.

Transpiration, souplesse et résistance sont les principales caractéristiques techniques de cette ligne. Disponibles en différentes variantes de couleur à base classique, avec des empiècements en contraste, ils représentent de manière idéale les couleurs de votre équipe.



Look DIAMANTIS



72 | 2022 | COLLECTION

PRODUCTION

42 AGHI UTILIZZATI
NEEDLES USED
AIGUILLES UTILISÉES

44 ROCCHIE DI FILO UTILIZZATE
SPOOLS OF THREAD USED
BOBINES DE FIL UTILISÉES

19 PASSAGGI DI CONFEZIONE
MANUFACTURING STEPS
PASSAGES DE CONFECTION



PIÙ DI 3 METRI DI BINDELLI PER OGNI SINGOLA MAGLIA
Over 3 metres of tape used for each shirt
Plus de 3 mètres de rubans utilisés pour chaque maillot



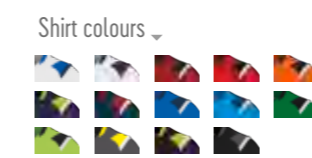
STAMPA TRANSFER
Sublimation printing
Impression par sublimation

AGO PUNTA PALLA PER UNA MAGGIORE CURA DEL TESSUTO
Ball point needle for greater care of the fabric
Aiguille à pointe boule pour un meilleur soin du tissu

CONTROLLO QUALITÀ ESEGUITO SU OGNI SINGOLO CAPO
Quality control performed on every single garment
Contrôle qualité sur chaque article



Look LUCAS



72 | 2022 | COLLECTION

PRODUCTION

32 AGHI UTILIZZATI
NEEDLES USED
AIGUILLES UTILISÉES

36 ROCCHIE DI FILO UTILIZZATE
SPOOLS OF THREAD USED
BOBINES DE FIL UTILISÉES

19 PASSAGGI DI CONFEZIONE
MANUFACTURING STEPS
PASSAGES DE CONFECTION



10 LAVORAZIONI PER L'APPLICAZIONE DEGLI INSERTI
10 processes for applying inserts
10 étapes pour l'application des empiècements



14 LAVORAZIONI PER L'ASSEMBLAGGIO DELLE MANICHE
14 processes for assembling sleeves
14 étapes pour l'assemblage des manches

CONTROLLO QUALITÀ ESEGUITO SU OGNI SINGOLO CAPO
Quality control performed on every single garment
Contrôle qualité sur chaque article



Look's fabrics

- ▶ MUNDIAL
- ▶ PIQUET
- ▶ WARM UP

72 | 2022 | COLLECTION

BRANDON

PRATICO, DINAMICO, COLORATO.

Modernità, traspirazione, tenuta termica.
 Il coordinato Brandon sfoggia due colori distinti che spezzano graficamente il capo donando un effetto di dinamicità e modernità.
 Ottimo per chi è alla ricerca di un look moderno caratterizzato da dettagli che ne esaltano lo stile pratico.
 Le tinte invernali della linea offrono una tenuta termica ottimale mentre le maglie gara a giaccollo garantiscono una traspirazione perfetta.
 Ideale per chi ricerca un capo colorato e vivace e dalla vestibilità semi aderente.
 Disponibile in diverse varianti colore, permette di soddisfare le diverse esigenze delle società sportive.

PRACTICAL, DYNAMIC, VIBRANT.

Modernity, breathability, heat retention.
 The Brandon strip boasts two distinct colours which graphically break up the garment, giving it a dynamic, modern effect.
 Excellent for anyone seeking a modern look, characterized by details which highlight the practical style.
 The winter sweatsuits in the line offer excellent heat retention while the round-neck match shirts guarantee perfect breathability.
 Ideal for those looking for a colourful and bright garment with a semi-fitted design.
 Available in various colour options, to meet the various needs of sports clubs.

PRATIQUE, DYNAMIQUE, VIVANT.

Modernité, respiration parfaite, conservation optimale.
 La tenue Brandon arbore deux couleurs distinctes qui « cassent » le graphisme de l'article en lui donnant un effet dynamique et moderne.
 Excellent pour tous ceux qui sont à la recherche d'un look moderne caractérisé par des détails qui mettent en valeur son style pratique.
 Les sweats d'hiver de cette ligne offrent une conservation optimale de la chaleur, alors que les maillots de compétition au col rond garantissent une respiration parfaite.
 Idéal pour tous ceux qui recherchent un article coloré et vif avec une coupe semi-moulante.
 Disponible dans plusieurs variantes de couleur, permet de répondre aux différentes exigences des clubs de sport.



CLASSIC

UNIVERSALE, MULTIFUNZIONALE, ATTUALE.

Versatilità, finezza, traspirazione.
 Il coordinato Classic riunisce i capi sportivi che da sempre fanno parte di tutte le discipline sportive per dare vita a una linea sempre moderna e contemporanea.
 Ideale per chi ama modelli classici e puliti.
 Linea dalle caratteristiche versatili, permette di soddisfare le esigenze di differenti discipline.
 Le maglie gara si caratterizzano per l'ottima traspirazione che assicurano.
 Il tessuto con cui sono realizzati, asciuga velocemente, non squalisce e mantiene la piega anche dopo i lavaggi permettendo di evitare la stiratura.
 Morbidità e resistenza distinguono i capi a manica lunga, ideali per le giornate più fredde.
 Disponibili in una vasta gamma colori per soddisfare le richieste più esigenti e diversificate dei club sportivi.

UNIVERSAL, MULTIFUNCTIONAL, CONTEMPORARY.

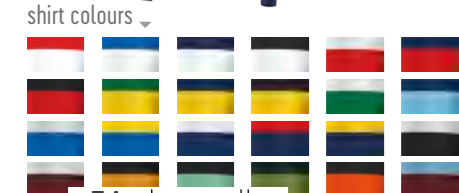
Versatility, elegance, breathability.
 The Classic strip brings together sporting garments which have always been a part of all sporting disciplines to create a line which is forever modern and contemporary.
 Ideal for those who love classic and clean styles.
 This line with versatile characteristics makes it possible to meet the needs of different sporting categories.
 The competition shirts are characterized by the excellent breathability they guarantee.
 The fabric they are made of is quick drying, doesn't crease and holds its shape even after washing, so there's no need for ironing.
 Softness and strength are the main features of the long-sleeve shirts, ideal for colder days.
 Available in a wide range of colours to meet the most demanding and diversified requests of sporting clubs.

UNIVERSEL, MULTIFONCTIONNEL, CONTEMPORAINE.

Flexibilité, finesse, respiration.
 La tenue Classic réunit les articles de sport qui, depuis toujours, font partie de toutes les disciplines sportives, pour donner vie à une ligne toujours moderne et contemporaine.
 Tenue idéale pour tous ceux qui aiment les modèles classiques et épurés.
 Ligne aux caractéristiques polyvalentes permettant de répondre aux exigences de différentes disciplines.
 Les maillots de compétition se caractérisent par l'excellente respiration qu'ils garantissent.
 Le tissu avec lequel ils sont confectionnés sèche rapidement, ne se chiffonne pas et garde le pli même après les lavages, ce qui permet de ne pas avoir à les repasser.
 Souplesse et résistance caractérisent les articles à manches longues, idéaux pour les journées les plus froides.
 Disponibles dans une vaste gamme de couleurs pour répondre aux demandes les plus exigeantes et variées des clubs de sport.



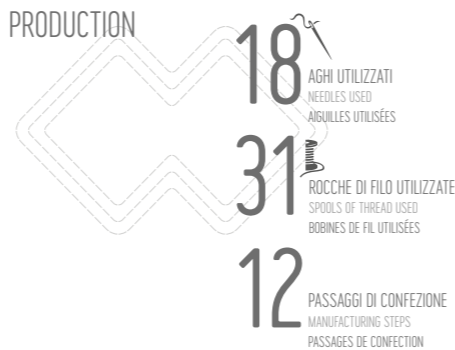
Look BRANDON



Look's fabrics

- ▶ SKIN
- ▶ MUNDIAL
- ▶ KAMELIA
- ▶ FULL
- ▶ PIQUET
- ▶ WARM-UP

PRODUCTION



▶ 2 PASSAGGI IN 2 MACCHINE PER L'APPLICAZIONE FRONTALE
2 manufacturing steps with 2 machines for the front application
2 passages dans 2 machines pour l'application frontale

▶ 5 OPERAZIONI DI ASSEMBLAGGIO DEL TESSUTO
5 operations to assemble the fabric
5 opérations d'assemblage du tissu

▶ 1/3 DI PASSAGGI MANUALI
1/3 of the steps by hand
1/3 de passages manuels

▶ 3 MACCHINE DIFFERENTI UTILIZZATE
3 different machines used
3 machines différentes utilisées

▶ CONTROLLO QUALITÀ ESEGUITO SU OGNI SINGOLO CAPO
Quality control performed on every single garment
Contrôle qualité sur chaque article



Look CLASSIC



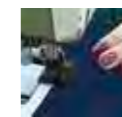
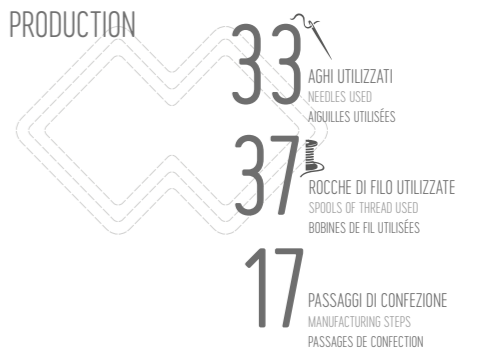
Shirt colours LENNOX



Look's fabrics

- ▶ UTILITY
- ▶ SKIN
- ▶ MUNDIAL
- ▶ PIQUET
- ▶ COTTON PIQUET
- ▶ KAMELIA
- ▶ B-HIVE
- ▶ RASIC

PRODUCTION



▶ QUASI UN METRO DI SBIECO UTILIZZATO PER OGNI SINGOLA MAGLIA
Almost one metre of bias binding used for each shirt
Presque un mètre de biais utilisé pour chaque maillot

▶ 5 OPERAZIONI DI ASSEMBLAGGIO DEL TESSUTO
5 operations to assemble the fabric
5 opérations d'assemblage du tissu

▶ 3 PASSAGGI DI RIFINITURA
3 finishing steps
3 passages de finition

▶ CONTROLLO QUALITÀ ESEGUITO SU OGNI SINGOLO CAPO
Quality control performed on every single garment
Contrôle qualité sur chaque article

