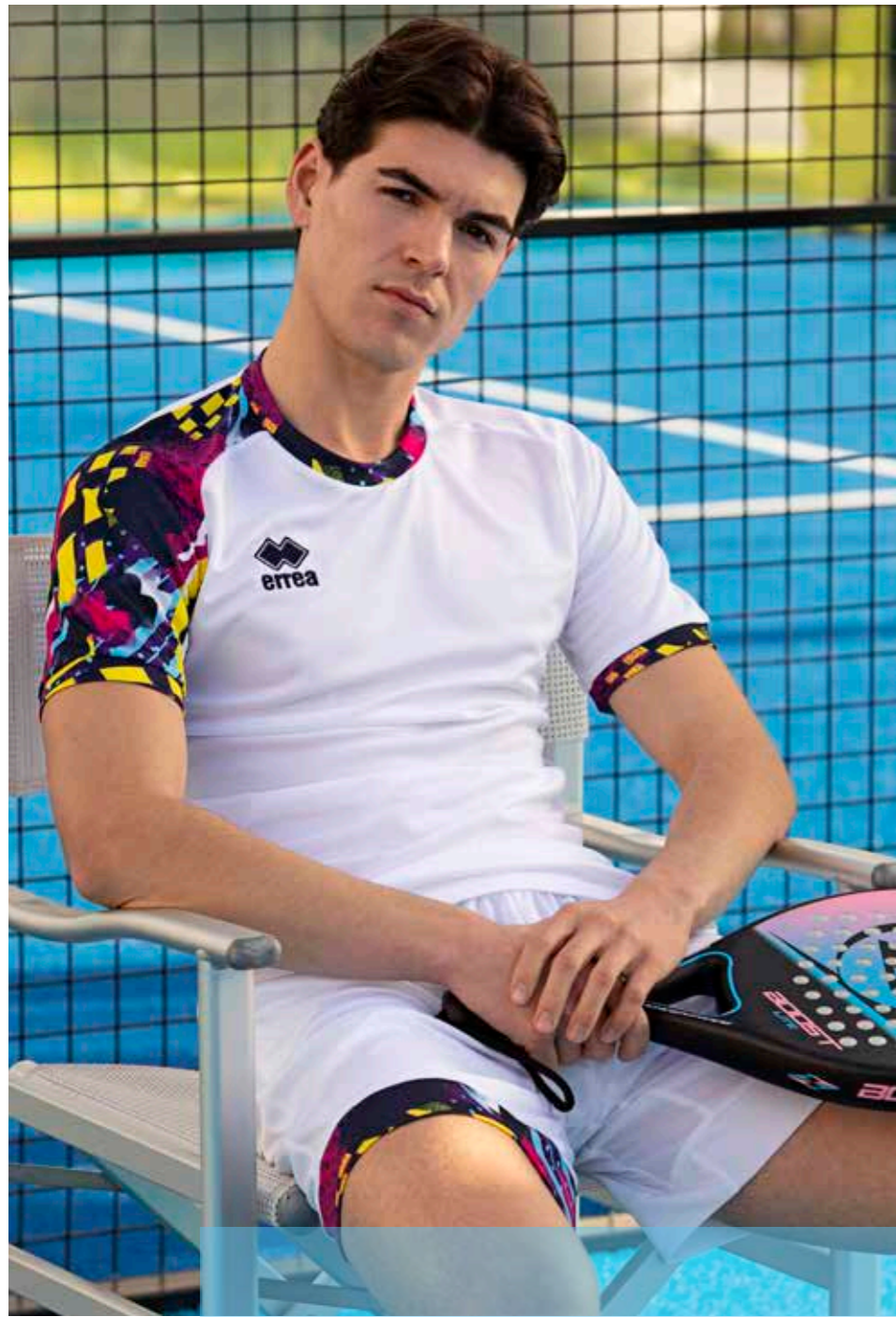


PADEL COLLECTION





PAMELA sleeveless

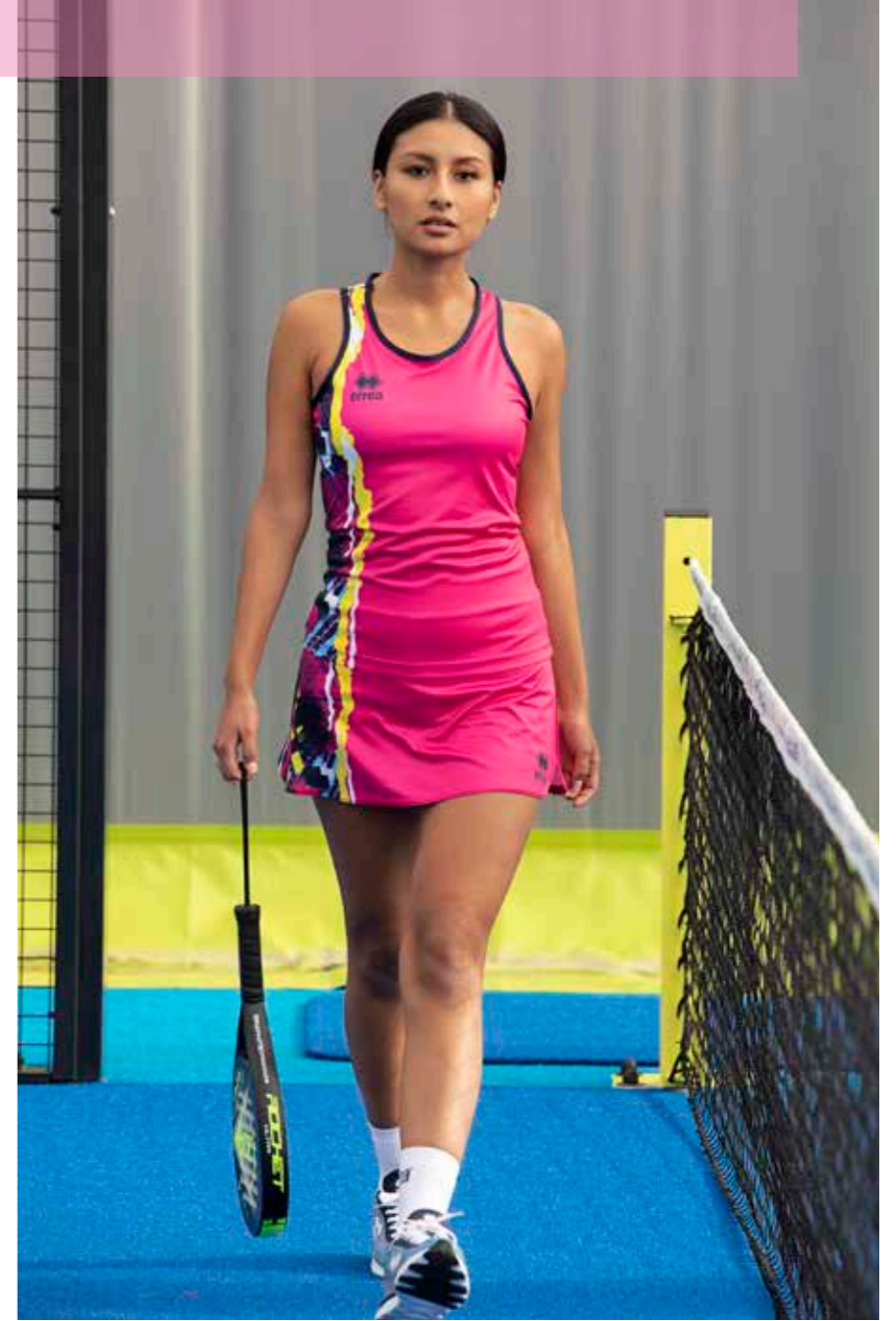
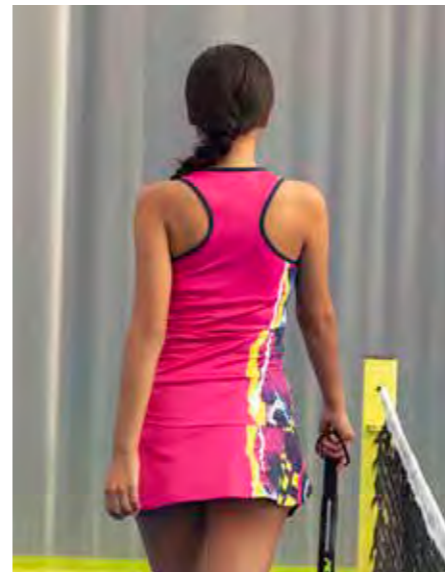


PERLA miniskirt

PATROS short



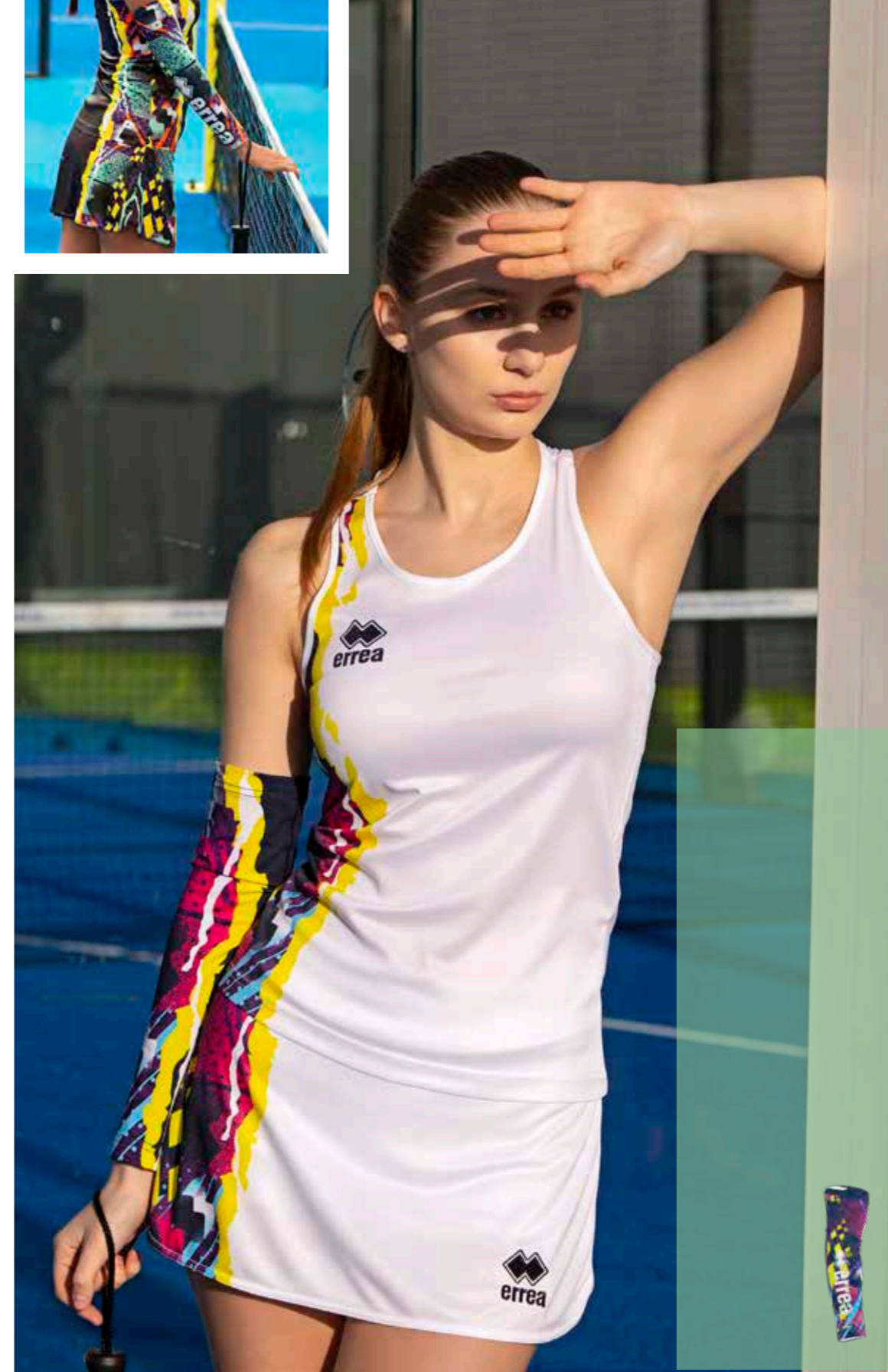
PADDY shirt



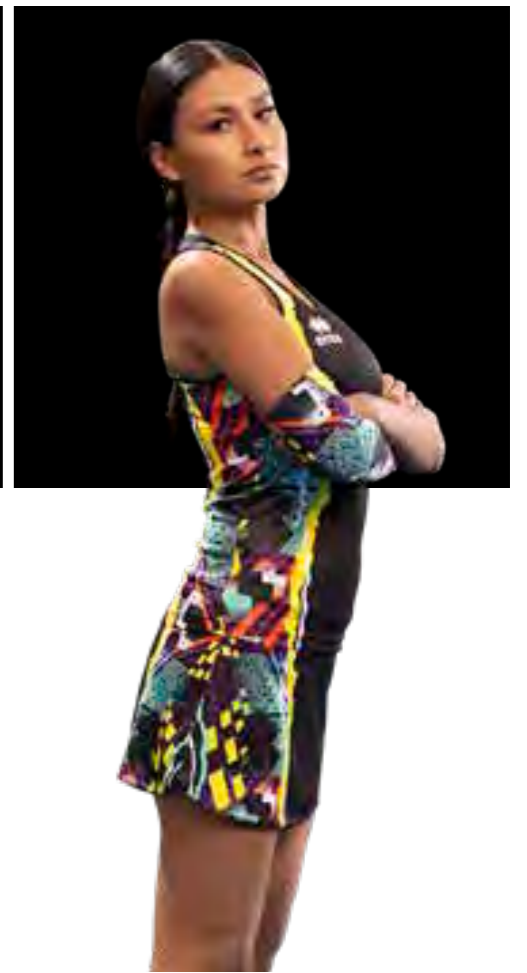
PAVEL top



PATROS short



PAMELA armwarmer



PAVEL top



NIDO D'APE 100% POLYESTER - 255 g/mq

FULL 100% POLYESTER - 240 g/mq

ADULT S/M/L/XL/XXL **GG0L0Z**

JUNIOR XS **GG0L1Z**



PADDY shirt



MUNDIAL 100% POLYESTER - 145 g/mq

ADULT S/M/L/XL/XXL **GMOU0C**

JUNIOR XS **GMOU1C**



PATROS short



MUNDIAL 100% POLYESTER - 145 g/mq

ADULT S/M/L/XL/XXL **GPOH0Z**

JUNIOR XS **GPOH1Z**



PAMELA sleeveless



MUNDIAL 100% POLYESTER - 145 g/mq

ADULT S/M/L/XL **GMOV0S**

JUNIOR XS **GMOV1S**



PERLA miniskirt



MUNDIAL 100% POLYESTER - 145 g/mq

ADULT S/M/L/XL **GPOI0Z**

JUNIOR XS **GPOI1Z**



PRIMUS armwarmer



PREMIER 82% POLYESTER 18% ELASTANE - 165 g/mq

ADULT S-M / L-XL **GA1E0Z**



EVERTON

► MARION WOMAN MODEL

2024

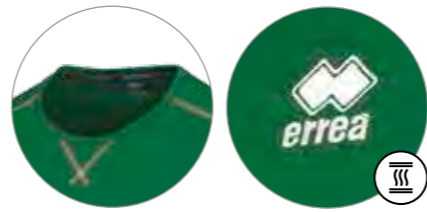


ADULT	S/M/L/XL/XXL/3XL	EM1R0C
JUNIOR	YXS/XXS/XS	EM1R1C
KID	2YXS	EM1R2C

UTILITY 100% POLYESTER - 145 g/mq

- Manica a giro
- Collo a giro con parasudore interno elastico
- Cuciture con copertura a tre aghi in contrasto
- Inserti laterali per una migliore vestibilità
- Set-in sleeves
- Crew neck with internal elastic neck-tape
- Three-needle overstitching in contrasting colour
- Side panels for improved wearability

- Manche montée
- Col rond avec bande de propreté interne élastique
- Coutures avec couverture à trois aiguilles, en contraste
- Empiècements latéraux pour une meilleure ligne



00040
green



00010
white



03320
green fluo



03310
yellow fluo



00030
yellow



03340
orange fluo



35990
cyan



00070
blue



00090
navy



00020
red



00150
maroon



00120
black

EVERTON LONG SLEEVES SPECIAL ORDER

ONLY COLOURS **EVERTON** SHIRT

MIN. 16 PCS min. 4 per size with multiples of 2



HECTOR

BHIVE

2024



ADULT	S/M/L/XL/XXL	GMOFOC
JUNIOR	XS	GMOF1C

B-HIVE 100% POLYESTER - 135 g/mq

- Manica a giro
- Collo Coreana e fintino con un bottone
- Carrè con tessuto al rovescio
- Code di topo sulle spalle
- Polso manica corta in tessuto
- Inserti laterali in contrasto
- Set-in sleeves
- Mandarin collar and placket with one button
- Yoke in reversed fabric
- Rattail trim on the shoulders
- Short sleeves with fabric cuff
- Contrasting inserts on sides
- Manches montées
- Col droit et patte avec un bouton
- Pièce carrée avec tissu retourné
- Queues de rat sur les épaules
- Poignets manches courtes en tissu
- Pièces latérales en contraste



01900
navy/white



00900
green/white



01500
blue/white



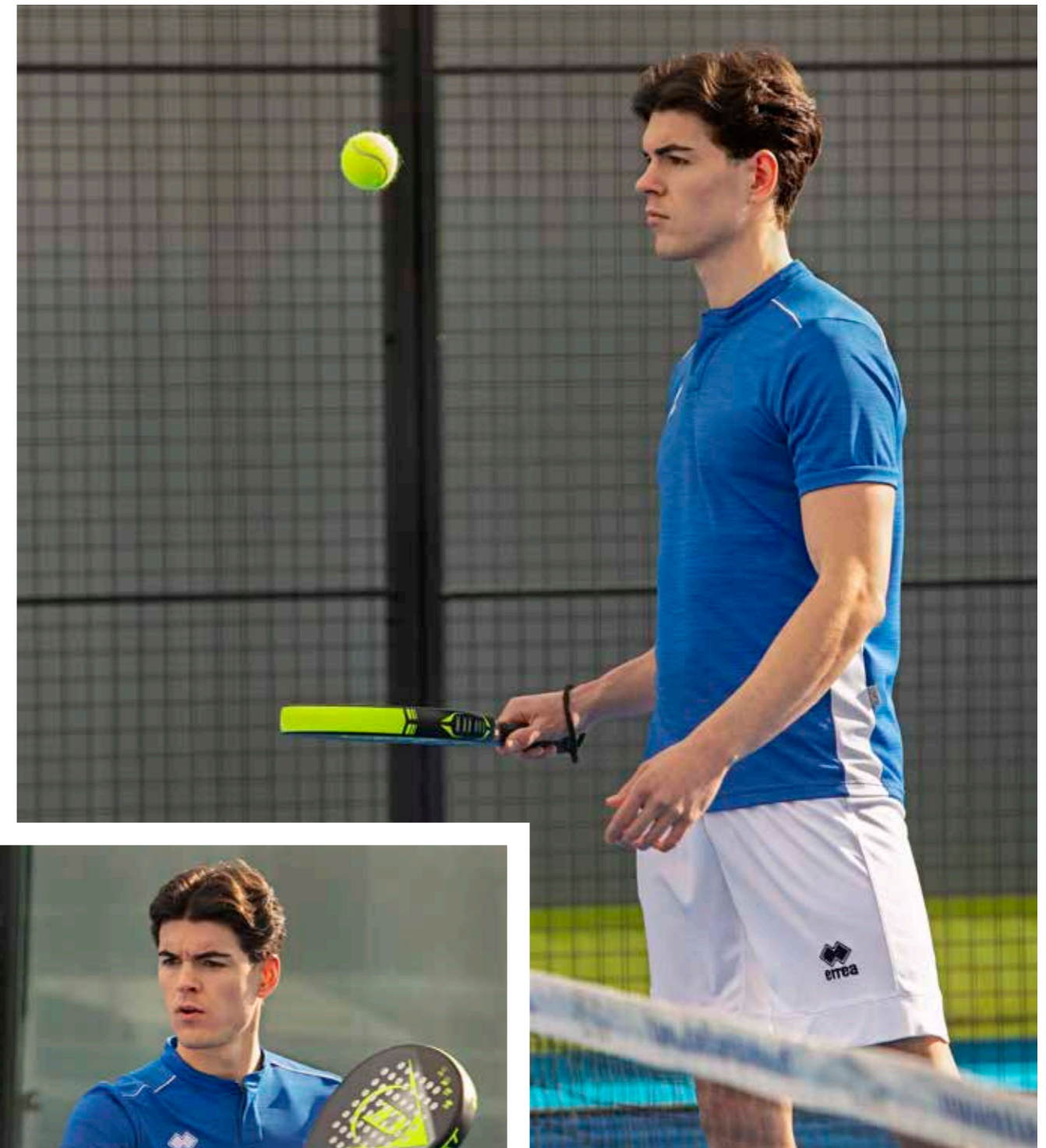
01910
navy/red



01920
navy/yellow



02500
black/white



DIAMANTIS

2024



ADULT S/M/L/XL/XXL/3XL/4XL

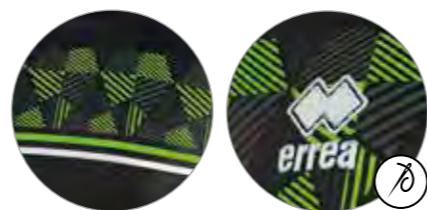
FM870C

JUNIOR YXS/XXS/XS

FM871C

MUNDIAL 100% POLYESTER - 145 g/mq

- Inserto in transfer
- Manica raglan
- Parasudore interno elastico
- Girocollo
- Fettucce in contrasto
- Sublimated insert
- Raglan sleeve
- Internal elastic neck tape
- Crew neck
- Stripes in contrast
- Insert en sublimation
- Manche raglan
- Bande de propreté interne élastique
- Ras de cou
- Binding en contraste



19540
black/green fluo/white



05120 white/red/navy
05210 white/blue/navy
55690 white/black/after eight
05850 green/grey/white



05730 yellow/black/anthracite
00660 red/yellow/white
00670 red/black/white
03280 maroon/grey/white



06640 blue/navy/white
07430 navy/grey/white
02060 navy/red/white
03480 navy/yellow/white



08860 black/orange fluo/white
07780 black/anthracite/white

DREAM WOMAN
SPECIAL ORDER

CUSTOM
SUBLIMATION

IT FITS LIKE
LENNY

ONLY COLOURS
DIAMANTIS SHIRT

ADULT S/M/L/XL/XXL/3XL PMJ13C

JUNIOR YXS/XXS/XS PMJ14C

MIN. 50 PCS min. 10 per size with multiples of 2



TI-MOTHY



2023



ADULT	S/M/L/XL/XXL/3XL	FMA20C
JUNIOR	YXS/XXS/XS	FMA21C

TI-ENERGY 3.0 100% POLYESTER - 130 g/mq

- Filato Ti-energy antivirale e antibatterico
- Manica a giro
- Collo a giro con inserto e parasudore interno elastico
- Polso e orlo sul fondo

- Ti-energy anti-viral and anti-bacterial fabric
- Set-in sleeves
- Crew neck with insert and internal elastic neck tape
- Cuff and hem on bottom

- Ti-energy tissu anti-viral et antibactérien
- Manches montées
- Col rond avec insert et bande de propreté interne élastique
- Poignet et ourlet au le bas



00260
white/blue



00280
white/navy



00500
red/white



03100
maroon/white



00900
green/white



01500
blue/white



01900
navy/white



02500
black/white



BRANDON

2025



ADULT	S/M/L/XL/XXL	GMOA0C
JUNIOR	XXS/XS	GMOA1C

SKIN 100% POLYESTER - 125 g/mq

- Manica a giro
- Girocollo
- Parasudore elastico interno
- Manica corta con orlo
- Maglia bicolore taglia e cucì

- Set-in sleeves
- Round neck
- Internal elastic neck tape
- Short sleeves with hem
- Two-colour cut and sew shirt

- Manches montées
- Col rond
- Bande de propreté interne
- Manches courtes avec ourlet
- Maillot bicolore patchwork



01520
blue/yellow



00210 white/red
00280 white/navy
00260 white/blue
00310 white/black
03100 maroon/white
03140 maroon/sky blue



00500 red/white
01900 navy/white
01500 blue/white
02500 black/white
00900 green/white



01920 navy/yellow
00780 yellow/navy
00810 yellow/black
00730 yellow/green
04950 amber/black



02810 orange/black
00610 red/black
00580 red/navy
01910 navy/red
01180 sky blue/navy



41920 after eight/black
68860 military green/black

BRENDA WOMAN SPECIAL ORDER



IT FITS LIKE
LENNY



ADULT	S/M/L/XL/XXL	PML03C
JUNIOR	YXS/XXS/XS	PML04C

MIN. 50 PCS min. 10 per size with multiples of 2



LEX

2022



ADULT S/M/L/XL/XXL/3XL/4XL

FM820C

MUNDIAL 100% POLYESTER - 145 g/mq

UTILITY 100% POLYESTER - 145 g/mq

- Manica a raglan
- Collo a giro e parasudore interno elastico
- Cuciture ribattute a 2 aghi
- Inserti in tessuto Utility e Skin
- Fondo maglia con orlo
- Raglan sleeves
- Crew neck with internal elastic neck tape
- Reinforced stitchings
- Inserts in Utility and Skin fabric
- Hemmed shirt bottom
- Manches raglan
- Col rond avec bande de propreté interne élastique
- Coutures renforcées
- Inserts en tissu Utility et Skin
- Bas du maillot avec ourlet



00410
white/navy/red



06640
blue/navy/white



03480
navy/yellow/white



02060
navy/red/white



00670
red/black/white



01070
green/black/white



19100
white/black/anthracite



05210
white/blue/navy

LINDA WOMAN SPECIAL ORDER

- Cuciture ribattute a 2 aghi
- Reinforced stitchings
- Coutures renforcées



IT FITS LIKE
LENNY

ONLY COLOURS
LEX SHIRT

ADULT S/M/L/XL/XXL/3XL

PMJF3C

JUNIOR YXS/XXS/XS

PMJF4C

MIN. 50 PCS min. 10 per size with multiples of 2



PROFESSIONAL 3.0

2024			ADULT S/M/L/XL/XXL/3XL/4XL/5XL	FM410C	€ 14,50
			JUNIOR YXS/XXS/XS	FM411C	€ 14,50

100% COTTON - 140 g/mq

- Manica corta a giro
- Collo a giro
- Cucitura a tre aghi in contrasto sul collo
- Set-in sleeves
- Crew neck
- Three-needle stitching in contrasting colour on collar
- Manches montées
- Col rond
- Couture particulière à trois aiguilles en contraste sur le col



00020
red



00010
white



00070
blue



00090
navy



00120
black

PROFESSIONAL 3.0 SINGLET

2024			ADULT S/M/L/XL/XXL/3XL/4XL/5XL	FM420S	€ 14,50
			JUNIOR YXS/XXS/XS	FM421S	€ 14,50

100% COTTON - 140 g/mq

- Collo a giro
- Cucitura a tre aghi in contrasto sul collo
- Crew neck
- Three-needle stitching in contrasting colour on collar
- Col rond
- Couture particulière à trois aiguilles en contraste sur le col



00090
navy



00010
white



00120
black

PRAGA 3.0

B-HIVE

2022				ADULT S/M/L/XL/XXL/3XL	FM950C
				JUNIOR YXS/XXS/XS	FM951C

B-HIVE 100% POLYESTER - 135 g/mq

- Manica a giro con polso
- Collo a camicia con 2 bottoni
- Applicazione verticale nel fintino in contrasto
- Set-in sleeves with cuff
- Shirt-collar with placket neck with buttons
- Vertical application in contrast
- Emmanchure avec poignet
- Col chemise avec deux boutons
- Double couche verticale en contraste



01900
navy/white



00260
white/blue



00280
white/navy



01500
blue/white



00500
red/white



02500
black/white



DOMINIC

2024



ADULT S/M/L/XL/XXL/3XL/4XL

FM890C

JUNIOR YXS/XXS/XS

FM891C

MUNDIAL 100% POLYESTER - 145 g/mq

- Inserto in transfer
- Manica raglan
- Collo a camicia con due bottoni
- Fettucce in contrasto
- Sublimated insert
- Raglan sleeve
- Shirt collar with two buttons
- Stripes in contrast
- Insert en sublimation
- Manches raglan
- Col chemise avec deux boutons
- Binding en contraste



05120
white/red/navy



04370
white/navy/grey



00670
red/black/white



06640
blue/navy/white



07780
black/anthracite/white



07430
navy/grey/white



02060
navy/red/white



03480
navy/yellow/white

DARYA WOMAN

2024



ADULT S/M/L/XL/XXL/3XL

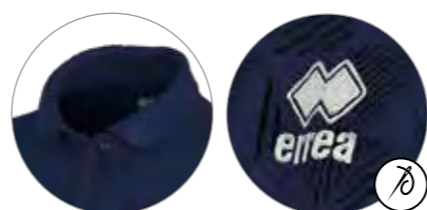
FM900C

JUNIOR YXS/XXS/XS

FM901C

MUNDIAL 100% POLYESTER - 145 g/mq

- Inserto in transfer
- Manica raglan
- Collo a camicia con due bottoni
- Fettucce in contrasto
- Sublimated insert
- Raglan sleeve
- Shirt collar with two buttons
- Stripes in contrast
- Insert en sublimation
- Manches raglan
- Col chemise avec deux boutons
- Binding en contraste



02060
navy/red/white



05120
white/red/navy



04370
white/navy/grey



00670
red/black/white



06640
blue/navy/white



07430
navy/grey/white



03480
navy/yellow/white



07780
black/anthracite/white



BOB

2025



ADULT	S/M/L/XL/XXL/3XL/4XL	GMOBOC
JUNIOR	YXS/XXS/XS	GMOB1C

MUNDIAL 100% POLYESTER - 145 g/mq
SKIN 100% POLYESTER - 125 g/mq

- Polo bicolore taglia e cucì in due tessuti
- Manica a giro con polso in tessuto
- Collo Polo con 2 bottoni
- Spacchetti laterali sul fondo
- Two-colour polo made from two different fabrics
- Set-in sleeves with fabric cuff
- Polo collar with 2 buttons
- Side splits at the bottom
- Polo bicolore patchwork en deux tissus
- Manches montées avec poignets en tissu
- Col polo avec deux boutons
- Petites fentes latérales dans le bas



68860
military green/black



BONNIE WOMAN

2025



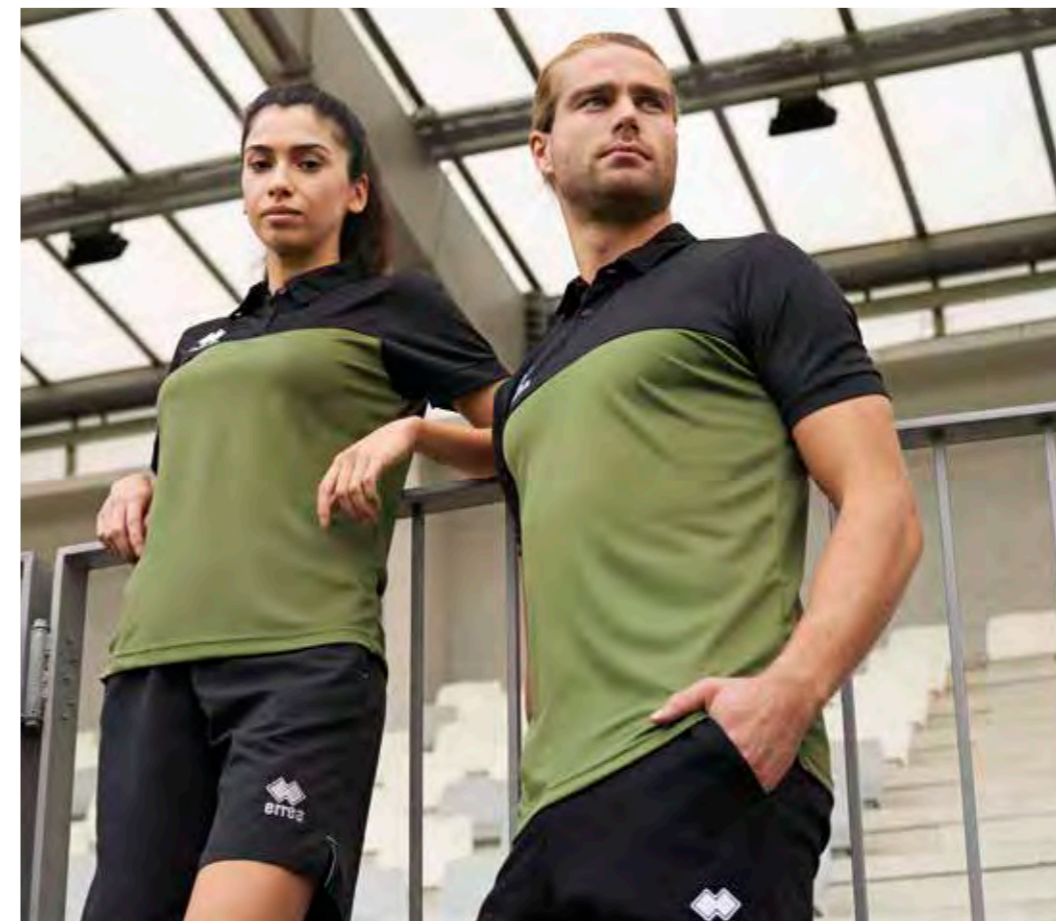
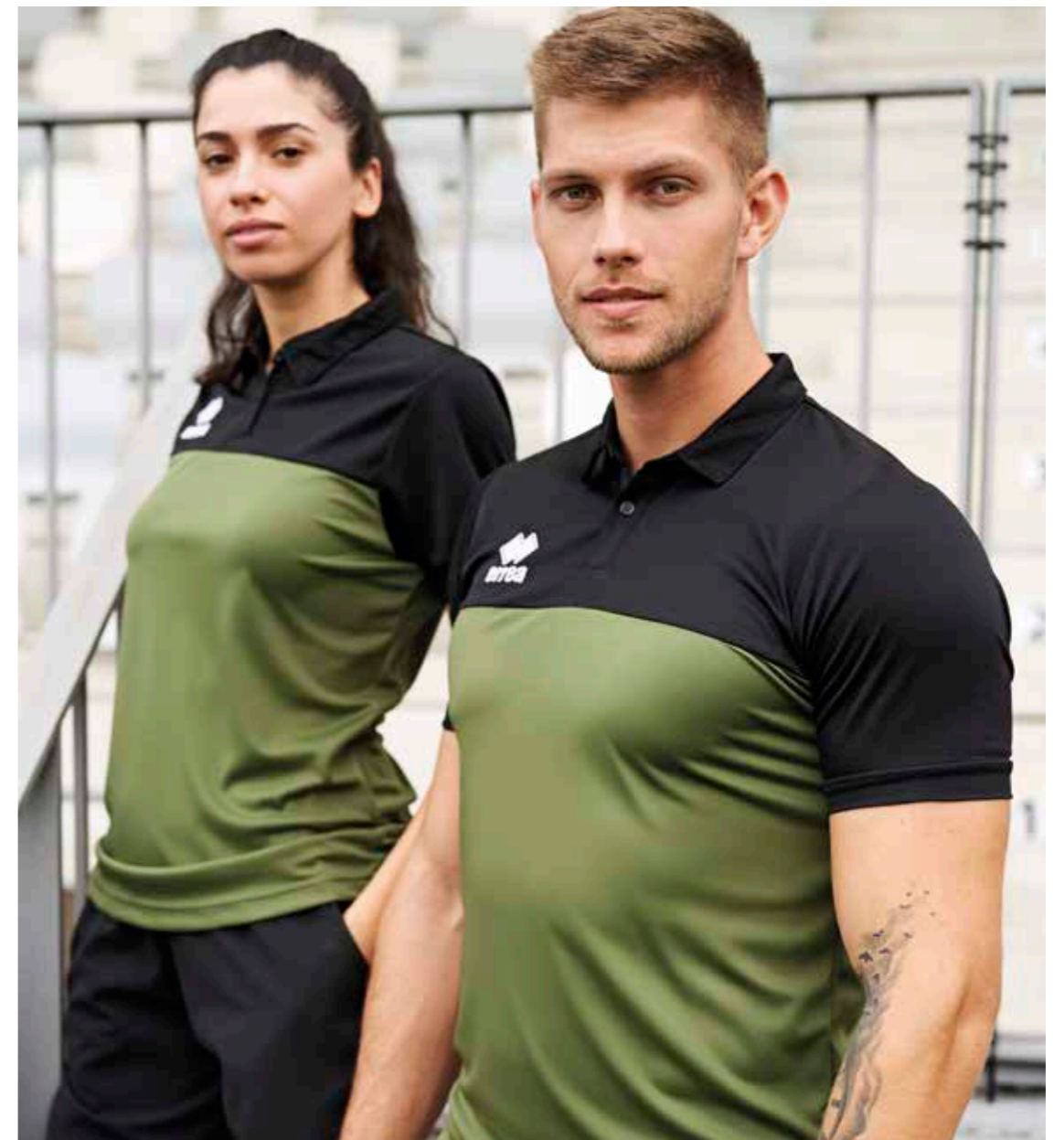
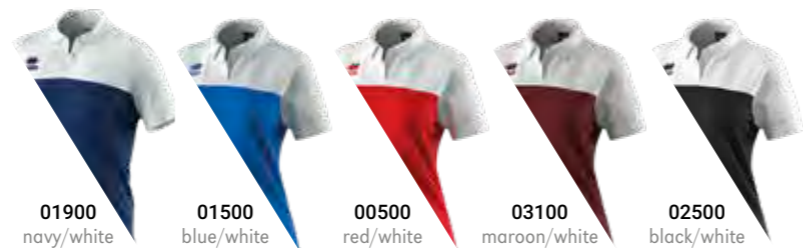
ADULT	S/M/L/XL/XXL	GMOCOC
JUNIOR	YXS/XXS/XS	GMOC1C

MUNDIAL 100% POLYESTER - 145 g/mq
SKIN 100% POLYESTER - 125 g/mq

- Polo bicolore taglia e cucì in due tessuti
- Manica a giro con polso in tessuto
- Collo Polo con 2 bottoni
- Two-colour polo made from two different fabrics
- Set-in sleeves with fabric cuff
- Polo collar with 2 buttons
- Polo bicolore patchwork en deux tissus
- Manches montées avec poignets en tissu
- Col polo avec deux boutons



68860
military green/black



LUIS

2022



ADULT S/M/L/XL/XXL/3XL/4XL

FM710C

JUNIOR YXS/XXS/XS

FM711C

MUNDIAL 100% POLYESTER - 145 g/mq

UTILITY 100% POLYESTER - 145 g/mq

- Manica a raglan
- Collo a camicia con due bottoni
- Inserti in tessuto Utility e Skin
- Manica corta con polso
- Raglan sleeves
- Shirt-collar neck with two buttons
- Inserts in Utility and Skin fabrics
- Short sleeve with cuff
- Manches raglan
- Col chemise avec deux boutons
- Inserts en tissu Utility et Skin
- Manches courtes avec poignet



00670
red/black/white



05210
white/blue/navy

00410
white/navy/red

19100
white/black/anthracite

01070
green/black/white



06640
blue/navy/white

02060
navy/red/white

03480
navy/yellow/white

LEONOR WOMAN

2022



ADULT S/M/L/XL/XXL/3XL/4XL

FM720C

JUNIOR YXS/XXS/XS

FM721C

MUNDIAL 100% POLYESTER - 145 g/mq

UTILITY 100% POLYESTER - 145 g/mq

- Manica a raglan
- Collo a camicia con due bottoni
- Inserti in tessuto Utility e Skin
- Manica corta con polso
- Raglan sleeves
- Shirt-collar neck with two buttons
- Inserts in Utility and Skin fabrics
- Short sleeve with cuff
- Manches raglan
- Col chemise avec deux boutons
- Inserts en tissu Utility et Skin
- Manches courtes avec poignet



00670
red/black/white



05210
white/blue/navy

00410
white/navy/red

19100
white/black/anthracite

01070
green/black/white



06640
blue/navy/white

02060
navy/red/white

03480
navy/yellow/white



IVAN 3.0



2023	ADULT	S/M/L/XL/XXL/3XL/4XL	FPOA0Z
	JUNIOR	YXS/XXS/XS	FPOA1Z

MUNDIAL 100% POLYESTER - 145 g/mq UTILITY 100% POLYESTER - 145 g/mq

- Elastico in vita e laccioli regolabili
- Tasche laterali
- Profili laterali in contrasto
- Inserto sul retro e interno gamba in tessuto Utility
- Elastic waistband and adjustable drawstring
- Side pockets
- Contrasting borders on sides
- Insert on back and inner thigh in Utility fabric
- Élastique à la taille, lacets réglables
- Poches latérales
- Profils latéraux en contraste
- Insert à l'arrière et à l'intérieur des jambes en tissu Utility



ILIE



2023	ADULT	S/M/L/XL/XXL	EP110Z
	JUNIOR	YXS/XXS/XS	EP111Z

MICROSOFT 100% POLYESTER - 115 g/mq PREMIER 82% POLYESTER 18% ELASTANE - 165 g/mq

- Bermuda con elastico in vita e laccioli regolabili
- Tasche laterali
- Inserto interno gamba in tessuto Premier
- Elastic waistband and adjustable drawstring
- Side pockets
- Inner thigh insert in Premier fabric
- Élastique à la taille et lacets réglables
- Poches latérales
- Insert à l'intérieur des jambes en tissu Premier



VICTOR



2025	ADULT	S/M/L/XL/XXL	GPOE0Z
	JUNIOR	YXS/XXS/XS	GPOE1Z

MUNDIAL 100% POLYESTER - 145 g/mq UTILITY 100% POLYESTER - 145 g/mq

- Elastico in vita con laccioli regolabili
- Tasche laterali
- Fondo e interno coscia in tessuto Utility
- Elastic waistband with adjustable drawstring
- Side pockets
- Bottom and inner thigh in Utility fabric
- Élastique à la taille et lacets réglables
- Poches latérales
- Bas et intérieur des cuisses en tissu Utility



CODY



2024	ADULT	S/M/L/XL/XX/3XL/4XL	FPA00Z
	JUNIOR	YXS/XXS/XS	FPA01Z

MICROSOFT 100% POLYESTER - 115 g/mq

- Elastico in vita e laccioli regolabili
- Tasche laterali a filetto
- Elastic waistband and adjustable drawstring
- Side pockets
- Élastique à la taille et lacets réglables
- Poches latérales



2022
COLLECTION

DIVINA WOMAN

2024



ADULT	S/M/L/XL/XXL/3XL	FM880S
JUNIOR	YXS/XXS/XS	FM881S

MUNDIAL 100% POLYESTER - 145 g/mq

- Inserto in transfer
- Maglia smanicata
- Parasudore interno elastico
- Girocollo
- Fettecche in contrasto
- Sublimated insert
- Sleeveless T-shirt
- Internal elastic neck tape
- Crew neck
- Stripes in contrast
- Insert en sublimation
- Maillot sans manches
- Bande de propreté interne élastique
- Ras de cou
- Binding en contraste



DELSIN MAN SPECIAL ORDER

IT FITS LIKE
SIDE SLEEVELESS

ONLY COLOURS
DIVINA SHIRT

ADULT	S/M/L/XL/XXL/3XL/4XL	PMJH3S
JUNIOR	YXS/XXS/XS	PMJH4S

MIN. 50 PCS min. 10 per size with multiples of 2



LISA WOMAN

2022



ADULT S/M/L/XL/XXL/3XL

FM830S

JUNIOR YXS/XXS/XS

FM831S

MUNDIAL 100% POLYESTER - 145 g/mq

UTILITY 100% POLYESTER - 145 g/mq

- Collo a V con doppio fintino e parasudore interno elastico
- Inserts in tessuto Utility e Skin
- Fondo maglia con orlo
- V-neck with double fabric border and internal elastic neck tape
- Inserts in Utility and Skin fabrics
- Hemmed shirt bottom
- Col V avec double patte et bande de propreté interne
- Inserts en tissu Utility et Skin
- Bas du maillot avec ourlet



07780
black/anthracite/white



00410
white/navy/red



05210
white/blue/navy



19100
white/black/anthracite



02060
navy/red/white



03480
navy/yellow/white



06640
blue/navy/white



04270
yellow/navy/white



02850
orange/black/white



33290
fuchsia fluo/black/white

LUCK MAN
SPECIAL ORDER



IT FITS LIKE
SIDE SLEEVELESS

ONLY COLOURS
LISA SHIRT

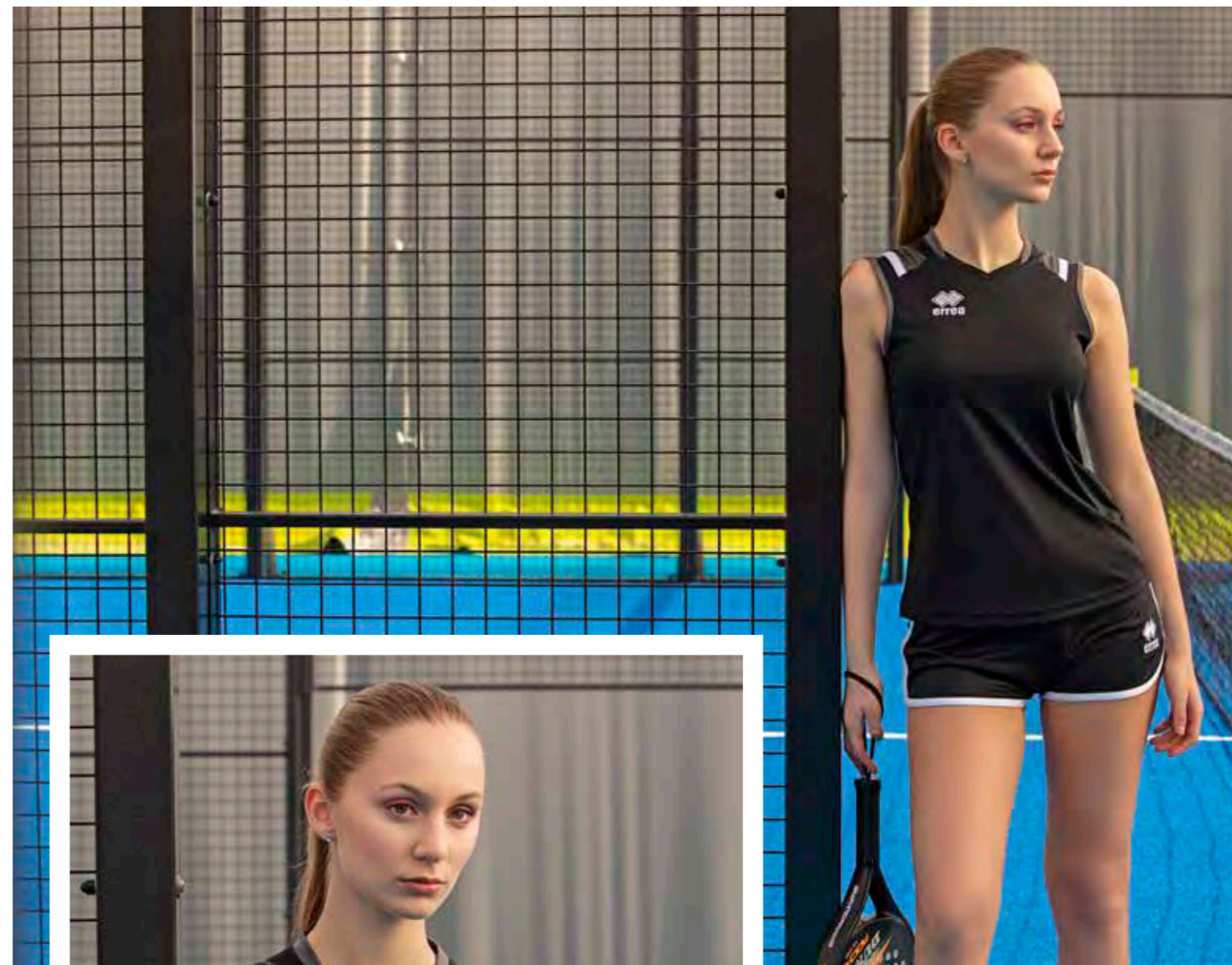
ADULT S/M/L/XL/XXL/3XL/4XL

PMIR3S

JUNIOR YXS/XXS/XS

PMIR4S

MIN. 50 PCS min. 10 per size with multiples of 2



ALISON WOMAN

2024



ADULT

S/M/L/XL/XXL/3XL

FM740S

JUNIOR

YXS/XXS/XS

FM741S

UTILITY 100% POLYESTER - 145 g/mq

- Collo a giro con parasudore interno elastico
- Cuciture con copertura a tre aghi in contrasto
- Crew neck with internal elastic neck tape
- Three-needle overstitching in contrasting colour
- Col rond avec bande de propreté interne élastique
- Coutures de couverture à trois aiguilles, en contraste



ALLAN MAN SPECIAL ORDER



IT FITS LIKE SIDE SLEEVELESS

ONLY COLOURS ALISON SHIRT

ADULT S/M/L/XL/XXL/3XL

PMJJ3S

JUNIOR YXS/XXS/XS

PMJJ4S

MIN. 50 PCS min. 10 per size with multiples of 2



KENNY WOMAN

2024



ADULT	S/M/L/XL/XXL	6M0J0S
JUNIOR	XXS/XS	6M0J1S

UTILITY 100% POLYESTER - 145 g/mq

- Collo a giro e bracci con bordini in contrasto
- Cuciture piatte in tinta
- Fianchette laterali in contrasto
- Inserti catarifrangenti sul davanti e nel retro
- Crew neck and armholes with contrasting trim
- Flat stitching in matching colour
- Contrasting side panels
- Reflectors on front and back
- Col rond et emmanchures avec bords en contraste
- Coutures plates de même couleur
- Pièces latérales en contraste
- Pièces rétro réfléchissantes avant et arrière



00500
red/white



00300
white/grey



01500
blue/white



01900
navy/white



08180
black/green fluo



59080
yellow fluo/white

SMITH WOMAN

2022



ADULT	S/M/L/XL/XXL	FM770S
JUNIOR	XXS/XS	FM771S

UTILITY 100% POLYESTER - 145 g/mq

- Collo a giro e bracci senza bordini
- Cuciture piatte in contrasto
- Fianchette laterali in contrasto
- Etichetta taglia applicata a caldo
- Tank with crew neck and armholes without edgings
- Flat stitching in contrasting colour
- Contrasting panels on sides
- Heat applied size label
- Débardeur à col rond et emmanchures sans bords
- Coutures plates en contraste
- Empiècements latéraux en contraste
- Étiquette de taille appliquée à chaud



00260
white/blue



00210
white/red



01500
blue/white



15270
cyan/white



04920
yellow fluo/black



04930
orange fluo/black



22650
fuchsia fluo/black



08180
black/green fluo



59120
green fluo/black



LENNY WOMAN

► LUCAS MAN MODEL

2022



ADULT

S/M/L/XL/XXL/3XL

FM690C

JUNIOR

YXS/XXS/XS

FM691C

MUNDIAL 100% POLYESTER - 145 g/mq

UTILITY 100% POLYESTER - 145 g/mq

- Manica a raglan
- Collo a V con doppio fintino e parasudore interno elastico
- Inserti in tessuto Utility e Skin
- Fondo maglia con orlo

- Raglan sleeves
- V-neck with double fabric border and internal elastic neck tape
- Inserts in Utility and Skin fabrics
- Hemmed shirt bottom

- Manches raglan
- Col V avec double patte et bande de propreté interne
- Inserts en tissu Utility et Skin
- Bas du maillot avec ourlet



05210
white/blue/navy



00410
white/navy/red



02060
navy/red/white



03480
navy/yellow/white



06640
blue/navy/white



00670
red/black/white



35770
green fluo/black/white



07780
black/anthracite/white



02850
orange/black/white



33290
fuchsia fluo/black/white



BESSY WOMAN

2025



ADULT	S/M/L/XL/XXL/3XL	GMOD0C
JUNIOR	XXS/XS	GMOD1C

MUNDIAL 100% POLYESTER - 145 g/mq

- Manica corta a giro
- Collo a V con parasudore interno elastico
- Maglia bicolore taglia e cuci
- Set-in short sleeves
- V-neck with internal elastic neck tape
- Two-colour cut and sew shirt
- Manches courtes montées
- Col en V avec bande de propreté interne
- Maillot bicolore patchwork



01920
navy/yellow



00210
white/red



00260
white/blue



00280
white/navy



00310
white/black



00500
red/white



01500
blue/white



01900
navy/white



02500
black/white



00780
yellow/navy



01910
navy/red



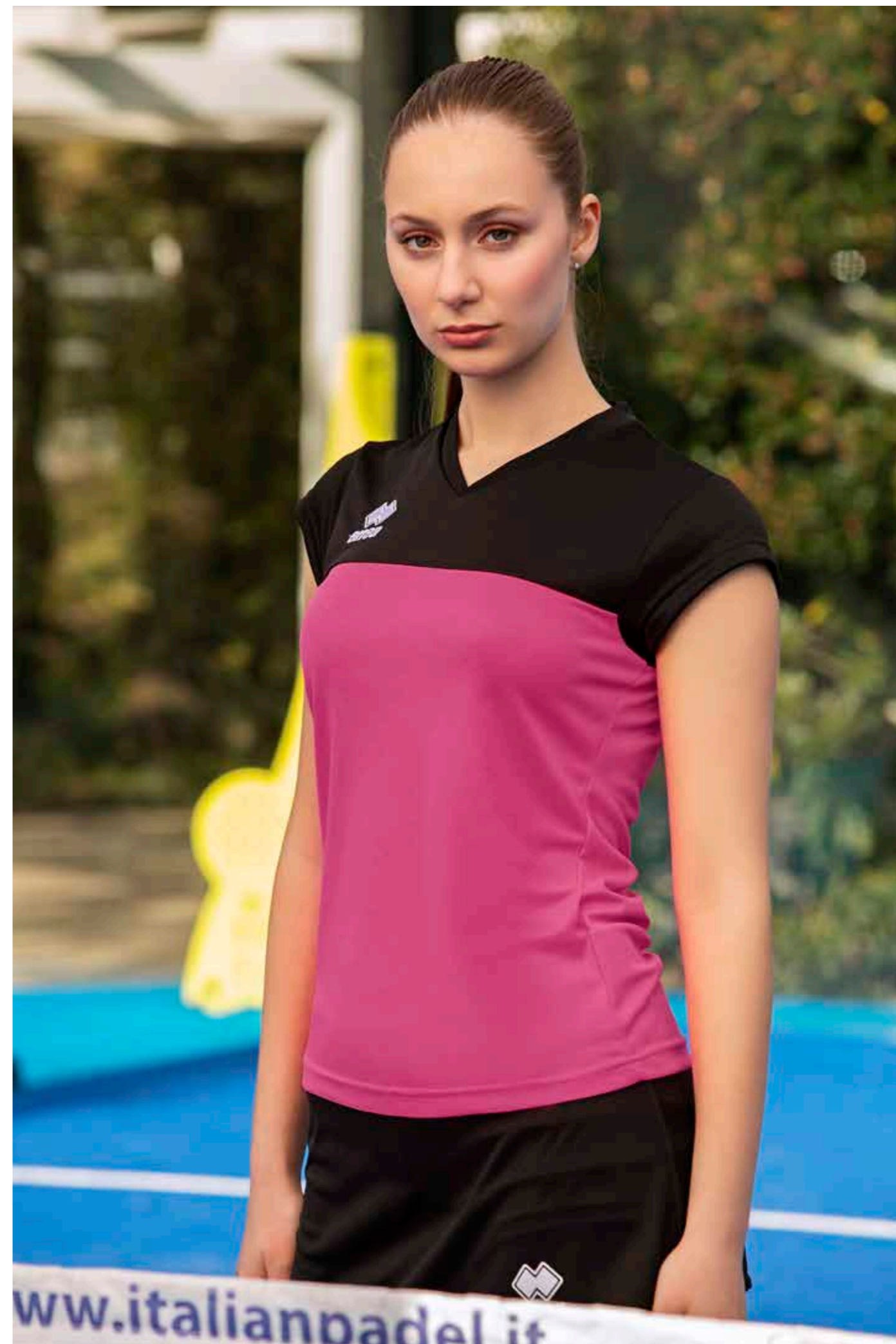
00580
red/navy



22650
fuchsia fluo/black



04610
black/fuchsia fluo



MARION WOMAN

▶ EVERTON MAN MODEL

2024



ADULT

S/M/L/XL/XXL

EM1TOC

JUNIOR

YXS/XXS/XS

EM1T1C

UTILITY 100% POLYESTER - 145 g/mq

- Manica a giro
- Collo a giro con parasudore interno elastico
- Cuciture con copertura a tre aghi in contrasto
- Fianchette laterali per una migliore vestibilità
- Set-in sleeves
- Crew neck with internal elastic neck-tape
- Three-needle over stitching in contrasting colour
- Side panels for improved wearability
- Manche montée
- Col rond avec bande de propreté interne élastique
- Coutures de couverture à trois aiguilles, en contraste
- Empiècements latéraux pour une meilleure ligne



MARION LONG SLEEVES

SPECIAL ORDER

ONLY COLOURS MARION SHIRT

MIN. 16 PCS min. 4 per size with multiples of 2



ROS 3.0 WOMAN



2024



ADULT	S/M/L/XL/XXL	FP880Z
JUNIOR	YXS/XXS/XS	FP881Z

MUNDIAL 100% POLYESTER - 145 g/mq

- Minigonna con panta interno
- Elastico in vita
- Miniskirt with undershorts
- Elastic waistband
- Mini-jupe avec short interne
- Élastique à la taille



00070
blue



00010
white



00020
red



00090
navy



00120
black



EMMA WOMAN



2023



ADULT	S/M/L/XL	FP990Z
JUNIOR	XXS/XS	FP991Z

MUNDIAL 100% POLYESTER - 145 g/mq

- Pantalino con elastico in vita e laccioli regolabili
- Bordini in contrasto
- Shorts with elastic waistband and adjustable drawstring
- Edgings in contrast
- Short avec élastique à la taille et lacets réglables
- Liserés en contraste



01900
navy/white



02500
black/white

CARLYS WOMAN SPECIAL ORDER

MIN. 50 PCS min. 10 per size with multiples of 2



ADULT	S/M/L/XL/XXL	
JUNIOR	YXS/XXS/XS	

MUNDIAL 100% POLYESTER - 145 g/mq UTILITY 100% POLYESTER - 145 g/mq

- Elastico in vita e laccioli regolabili
- Tasche laterali
- Profili laterali in contrasto
- Inserto sul retro e interno gamba in tessuto Utility
- Elastic waistband and adjustable drawstring
- Side pockets
- Contrasting borders on sides
- Insert on back and inner thigh in Utility fabric
- Élastique à la taille, lacets réglables
- Poches latérales
- Profils latéraux en contraste
- Insert à l'arrière et à l'intérieur des jambes en tissu Utility



01900
navy/white



02520
black/yellow



01500
blue/white

Esempio personalizzato - Personalised example - Exemple personnalisée

DOUGLAS 3.0 WOMAN



2024



ADULT	S/M/L/XL/XXL/3XL	FP580Z
JUNIOR	YXS/XXS/XS	FP581Z

SUPERGA 92% COTTON 8% ELASTANE - 200 g/mq

- Lunghezza 3/4
- Elastico in vita
- Carré sul retro
- 3/4 trousers
- Elastic waistband
- Carré on the back
- Pantalon 3/4
- Élastique à la taille
- Carré à l'arrière



00090
navy



00090
navy



00120
black

DALMA WOMAN



2024



ADULT	S/M/L/XL/XXL/3XL	FP960Z
JUNIOR	YXS/XXS/XS	FP961Z

SUPERGA 92% COTTON 8% ELASTANE - 200 g/mq

- Leggings aderenti con elastico in vita
- Fondo con orlo
- Carré sul retro
- Skinny leggings with elastic waistband
- Ankle with hem
- Carré on the back
- Leggings moulants avec élastique à la taille
- Bas avec ourlet
- Carré à l'arrière



00090
navy



00090
navy



00120
black

ALPHA

2024



ADULT M:35/38-L:39/42-XL:43/47
JUNIOR XS: 31/34

FCOA0Z
FCOA1Z

80% COTTON 20% ELASTANE

- Compressione sull'arco plantare
- Compression on arch of the foot
- Compression sur voûte plantaire
- Tallone e punta rinforzati
- Reinforced heel and toe
- Talon et pointe renforcés



00280
white/navy

BEST

2024



ADULT

FCOB0Z
FCOB1Z

45% COTTON 45% POLYESTER 10% ELASTANE

- Altezza sopra alla caviglia
- Particolarmente indicata per uso in allenamento
- Height above the ankle
- Particularly recommended for training
- Chaussettes bas en coton montant au-dessus de la cheville
- Spécialement indiquées pour l'entraînement



00010
white



00090
navy



00120
black

SKIP

2024



ADULT M:35/38-L:39/42-XL:43/47
JUNIOR XS: 31/34

A422
A423

80% COTTON 16% NYLON 4% ELASTANE

- Calza corta in cotone
- Zona traspirante sul collo del piede
- Cotton ankle socks
- Breathable zone on instep
- Chaussettes bas en coton
- Zone respirante sur le cou-de-pied



000190
navy/white



000028
white/navy



000250
black/white

JUMP

2024



ADULT M:35/38-L:39/42-XL:43/47

FA2ROZ

50% COTTON 50% ELASTANE

- Calza corta in cotone
- Zona traspirante sul collo del piede
- Cotton ankle socks
- Breathable zone on instep
- Chaussettes bas en coton
- Zone respirante sur le cou-de-pied



02500
black/white



00280
white/navy

COMFORT

2024



SIZE ONE SIZE

A426

80% COTTON 16% NYLON 4% ELASTANE

- Altezza caviglia
- Zona traspirante sul collo del piede
- Ankle socks
- Breathable zone on instep
- Hauteur cheville
- Zone respirante sur le coup-de-pied



000028
white/navy



000250
black/white

TRAINING

2024



ADULT M:35/38-L:39/42-XL:43/47
JUNIOR XS: 31/34

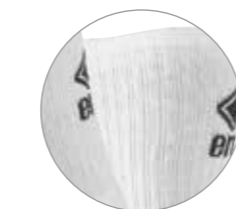
A428
A429

55% COTTON 40% NYLON 5% ELASTANE

- Altezza polpaccio
- Zona traspirante sul polpaccio
- Calf-length socks
- Breathable zone on calf
- Chaussettes hauteur mollet
- Zone respirante sur le mollet



000031
white/black



000190
navy/white

JACOB

2024



ADULT S/M/L/XL/XXL/3XL/4XL/5XL
JUNIOR YXS/XXS/XS

FG0X0Z
FG0X1Z

BASIC 100% POLYESTER - 200 g/mq

- Cappuccio regolabile con laccioli e cerniera full-zip
- Polsini e fascione in costina elasticizzata
- Interno cappuccio in Mesh

- Hooded jacket with adjustable drawstring and full-zip
- Cuffs in elasticated ribbing
- Internal hood in Mesh

- Veste avec capuche réglable avec lacets et zip de haut en bas
- Poignets et bande à la taille en bord-côte
- Tissu à l'intérieur du capuche en Mesh



FLANN
TROUSERS

KEY
TROUSERS

NEVIS 3.0
TROUSERS

MILO 3.0
TROUSERS

VANESSA 3.0
WOMAN TROUSERS



JONAS

2024



ADULT S/M/L/XL/XXL/3XL/4XL/5XL

F60F0Z

JUNIOR YXS/XXS/XS

F60F1Z

BASIC 100% POLYESTER - 200 g/mq

- Felpa con cappuccio regolabile con laccioli
- Polsini e fascione in costina elasticizzata
- Interno cappuccio in Mesh

- Hooded top with adjustable drawstring
- Cuffs and wide waistband in elasticated ribbing
- Internal hood in Mesh

- Veste avec capuche réglable à lacets
- Poignets et bande en bord-côte
- Tissu à l'intérieur du capuche en Mesh



00010
white



00130
orange



00020
red



00040
green



35990
cyan



00070
blue



00090
navy



00120
black



00150
maroon



03320
green fluo



03310
yellow fluo



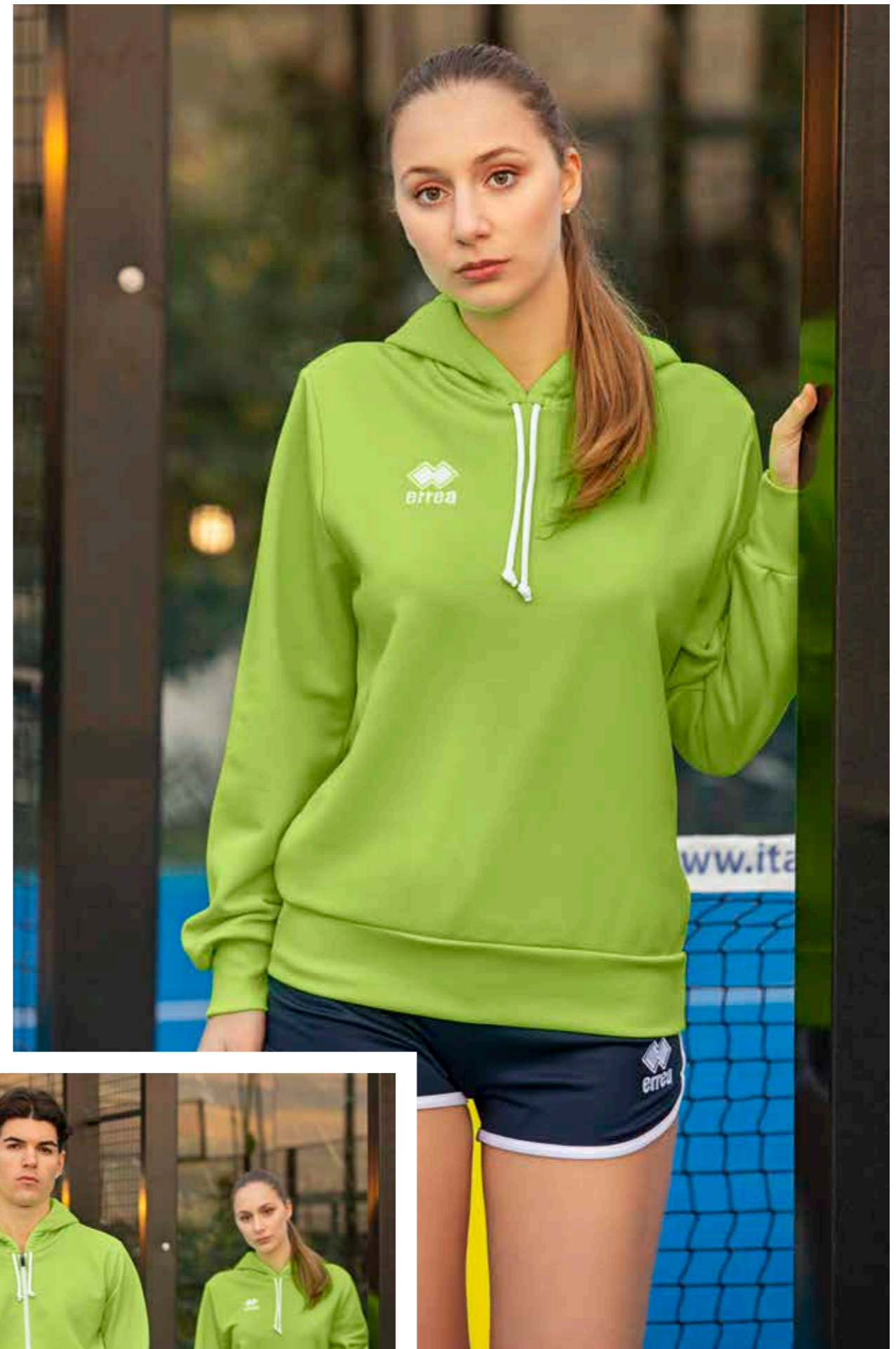
FLANN
TROUSERS

KEY
TROUSERS

NEVIS 3.0
TROUSERS

MILO 3.0
TROUSERS

VANESSA 3.0
WOMAN TROUSERS

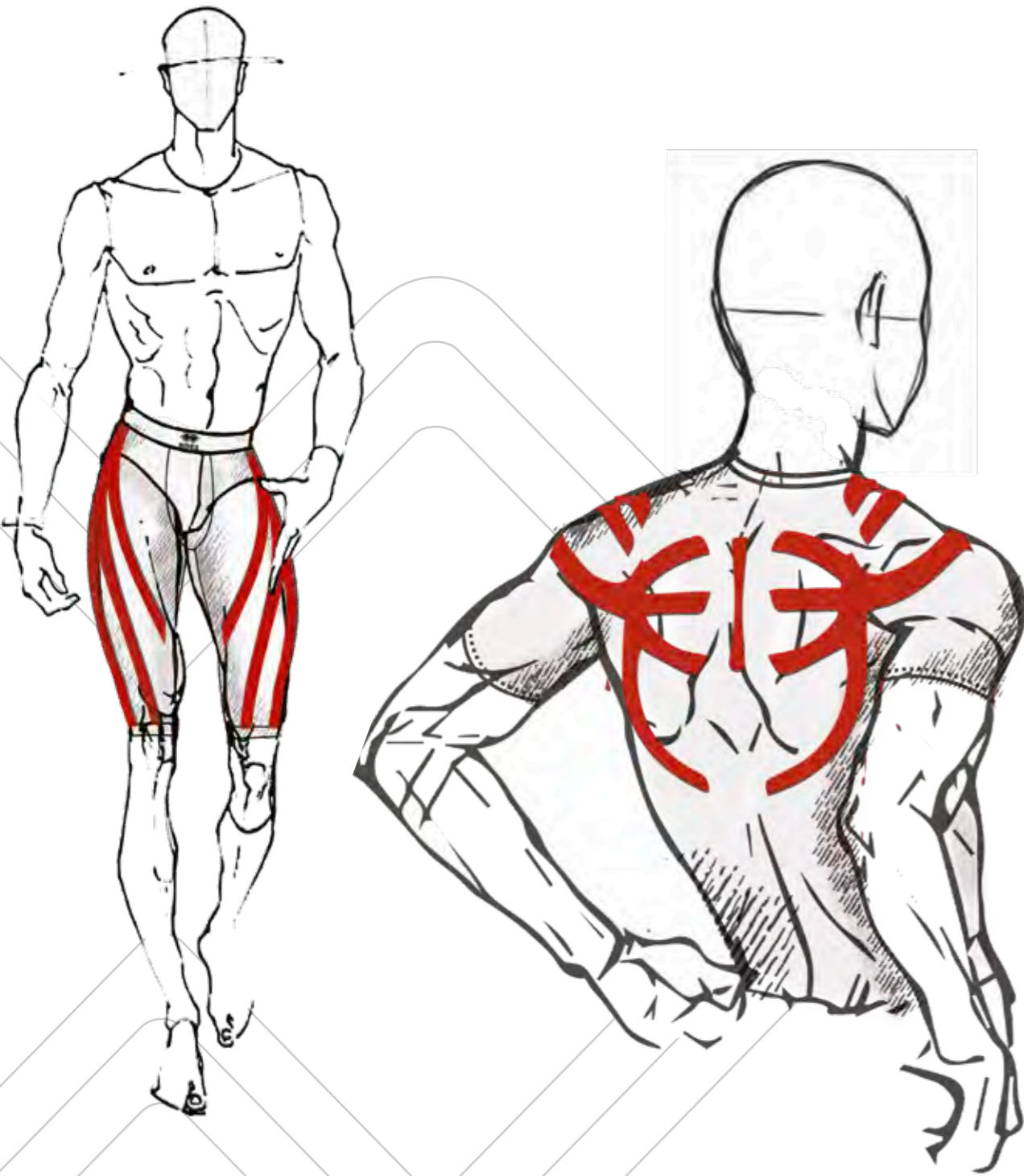




LINE
BASE LAYER

DESIGN BY
ERREÀ GRAPHIC DPT

2022
COLLECTION



FABRICS:

*Polyamide
Elastan*

Errea
BASE LAYER

TECNOLOGIA IN AZIONE

Dopo più di 3 anni di ricerche, decine di prototipi progettati e oltre 100 test approfonditi eseguiti da atleti professionisti di oltre 30 sport in gara e allenamento, Erreà Sport® presenta Active Tense®. Progettata grazie alla collaborazione di osteopati, fisioterapisti e atleti professionisti, ACTIVE TENSE® è l'esclusiva e unica linea di abbigliamento dotata di un esoscheletro flessibile interno a ogni capo. Active Tense® è ispirato al concetto di taping e della chinesioterapia e studiato con lo scopo di garantire un'ineguagliabile stabilizzazione delle articolazioni e dei muscoli durante l'attività fisica. Il disegno unico biodinamico di Active Tense® e la sua speciale costruzione ergonomica brevettata assicurano una perfetta aderenza al corpo seguendone i movimenti naturali. La speciale costruzione a superfici differenziate consente, inoltre, una rapida dispersione del sudore insieme a una ventilazione efficace in grado di mantenere il corpo asciutto per offrire il massimo comfort. Active Tense® è 100% Made in Italy e certificato OEKO-TEX® Standard 100 per garantire i massimi standard di sicurezza e qualità.

TECHNOLOGY IN ACTION

Following more than 3 years of research, dozens of prototypes and over 100 tests carried out by sporting professionals in more than 30 different disciplines in competitions and training, Erreà Sport® presents Active Tense®. Designed in collaboration with osteopaths, physiotherapists and professional athletes, ACTIVE TENSE® is the only line of sportswear to feature a flexible exoskeleton embedded in each garment. Active Tense® was inspired by kinesiology taping to provide exceptional joint and muscle stabilization during exercise. The unique biodynamic design of Active Tense® with its one-of-a-kind patented ergonomic design ensure the perfect fit while accompanying the body's natural movements. The use of multiple surfaces ensures rapid sweat dispersion and effective ventilation to keep the body dry and comfortable. Active Tense® is 100% Made in Italy and OEKO-TEX® Standard 100 certified to guarantee the highest safety and quality standards.

TECHNOLOGIE EN ACTION

Après plus de 3 ans de recherches, des dizaines de prototypes et plus de 100 tests approfondis exécutés par des athlètes professionnels de plus de 30 sports, pendant les compétitions et les entraînements, Erreà Sport® présente Active Tense®. Mise au point avec la coopération d'ostéopathes, physiothérapeutes et athlètes professionnels, ACTIVE TENSE® est une ligne de vêtements exclusive et unique dotée d'un exosquelette flexible inséré à l'intérieur de chaque vêtement. Active Tense® s'inspire du concept de « taping » et de la kinésiothérapie et a été conçue dans le but d'assurer une incomparable stabilisation des articulations et des muscles pendant l'activité sportive. L'exclusif dessin biodynamique d'Active Tense® et sa spéciale construction ergonomique brevetée assurent une adhérence parfaite au corps en accompagnant ses mouvements naturels. La construction spéciale à surfaces différenciées permet en outre une dispersion rapide de la sueur ainsi qu'une ventilation efficace pouvant maintenir le corps sec pour offrir le confort maximum. Active Tense® est 100% Made in Italy et certifié OEKO-TEX® Standard 100 pour assurer les niveaux maximums en termes de sécurité et qualité.

COME FUNZIONA

L'esoscheletro interno dei capi Active Tense® supporta i movimenti naturali del corpo, migliorando la postura senza limitare la libertà di movimento con un effetto stabilizzante sia attivo che passivo.

STABILIZZAZIONE ATTIVA

La stabilizzazione attiva è un supporto graduale ai muscoli e alle articolazioni che serve a migliorare i movimenti naturali del corpo, mantenendoli nel giusto binario ed evitando movimenti potenzialmente scorretti e dannosi.

STABILIZZAZIONE PASSIVA

La stabilizzazione passiva agisce da guida funzionale, suggerendo al corpo come mantenere una postura più appropriata e coadiuvando muscoli ed articolazioni a mantenere un adeguato allineamento. Active Tense® aiuta, inoltre, a ridurre le vibrazioni a cui sono sottoposti i muscoli e, quindi, l'affaticamento durante e dopo lo sforzo fisico, e a migliorare la propriocettività, ovvero la capacità di percepire e riconoscere la posizione del corpo nello spazio, sensibilità fondamentale per il controllo del movimento. Grazie all'elevato sostegno articolare e muscolare, e la conseguente riduzione dello stress corporeo, Active Tense® può anche promuovere un più rapido recupero post-infortunio.

HOW DOES IT WORK

The embedded exoskeleton in Active Tense® garments supports the body's natural movements by improving posture without inhibiting freedom of movement through a combination of active and passive stabilization.

ACTIVE STABILIZATION

Active stabilization offers graded muscle and joint support aimed at enhancing the body's natural movements, keeping them on the right path and eliminating movements that are wrong or unnatural.

PASSIVE STABILIZATION

Passive stabilization is a functional guide that encourages the body to adopt an appropriate posture and helps muscles and joints to stay properly aligned. Active Tense® reduces muscle vibration and therefore fatigue during and after exercise while improving proprioceptivity, the capacity to perceive and recognize the position of the body in space, a crucial aspect of movement control. Thanks to its exceptional levels of support for joints and muscles and the resulting reduction of stress for the body, Active Tense® also ensures improved post-injury recovery times.

COMMENT CELA FONCTIONNE

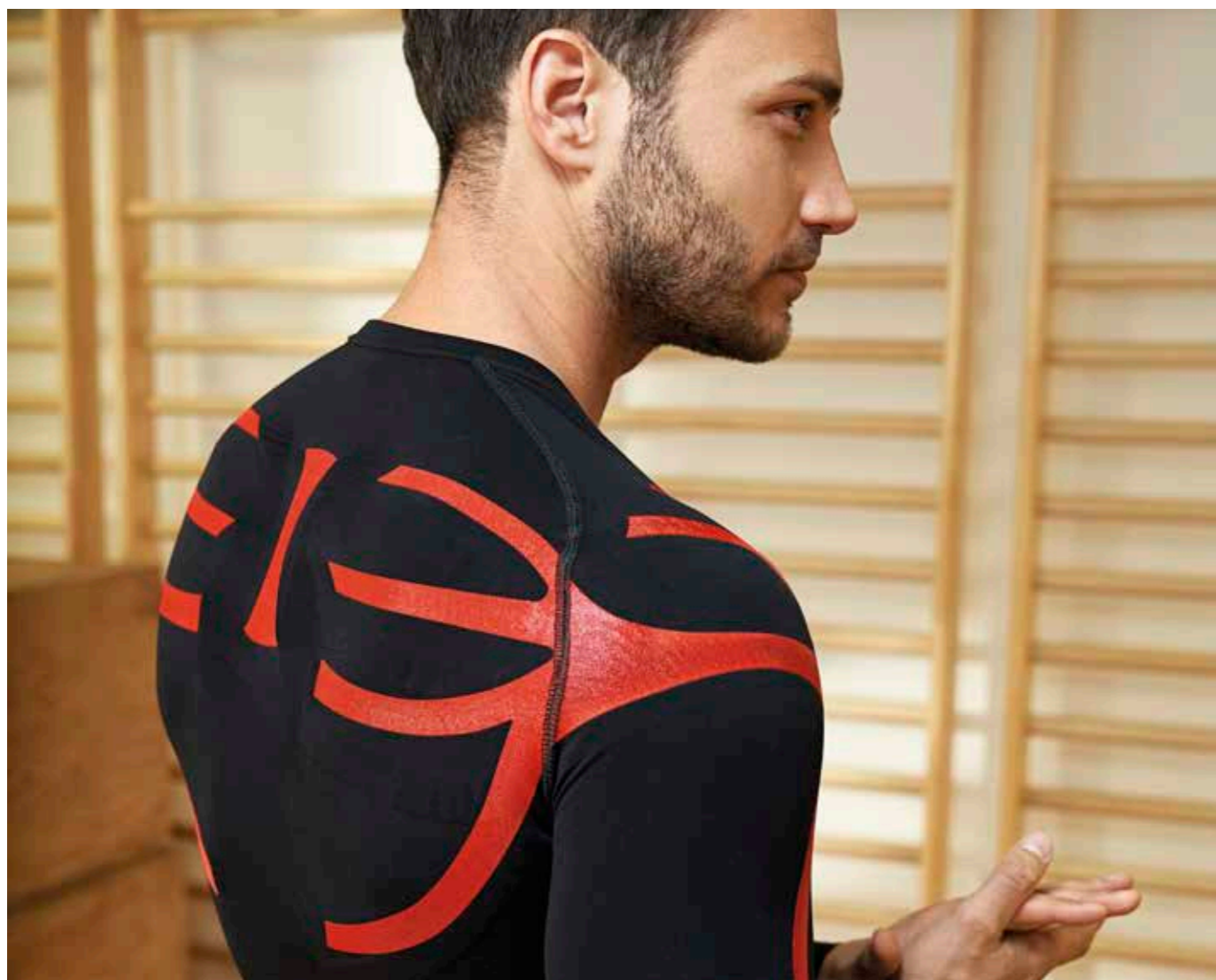
L'exosquelette interne des vêtements Active Tense® accompagne les mouvements naturels du corps, améliorant la posture sans limiter la liberté de mouvement avec un effet de stabilisation actif et passif.

STABILISATION ACTIVE

La stabilisation active offre un soutien graduel des muscles et des articulations servant à améliorer les mouvements naturels du corps, tout en les maintenant dans la position correcte et évitant des mouvements potentiellement erronés et dangereux.

STABILISATION PASSIVE

La stabilisation passive agit comme un guide fonctionnel, aidant le corps à maintenir une posture plus appropriée et permettant aux muscles et aux articulations de maintenir un alignement correct. Active Tense® aide en outre à limiter les vibrations auxquelles les muscles sont sujets et, par conséquent, la fatigue pendant et après l'effort physique ainsi qu'à améliorer leur proprioceptivité, soit la capacité de percevoir et reconnaître la position du corps dans l'espace, ce qui est fondamental pour le contrôle du mouvement. Grâce à l'excellent soutien articulaire et musculaire et à la limitation conséquente du stress corporel, Active Tense® pourrait aussi promouvoir une récupération plus rapide après un accident.



MIZAR

ACTIVE
TENS

2024		MADE IN ITALY	OEKO-TEX® STANDARD 100 CERTIFIED	ADULT	S/M/L/XL/XXL	U700L
				JUNIOR	XS	U701L

91% POLYAMIDE 9% ELASTAN



003708
white/cyan



002510
black/red



000772
black/yellow fluo

Fino ad esaurimento scorte
While stocks last
Jusqu'à épuisement du stock

- Collo a giro progettata per migliorare postura e rendimento
- Esoscheletro a supporto posturale
- Supporto mirato per i muscoli della parte alta della schiena, articolazioni delle spalle e cuffie dei rotatori
- Supporto extra per gomiti e muscoli delle braccia
- Fasce elastiche interne a sostegno del deltoide, tricipite e trapezio
- Riduzione della vibrazione muscolare
- Traspirante
- Inserimento di fibre di Elastan di alta qualità per mantenere sempre la forma dell'indumento
- Tessuto elastico senza cuciture

- Long-sleeve shirt scientifically engineered to improve posture and performance
- Exoskeleton for postural support.
- Targeted support for the muscles in the upper part of the back, shoulders and rotator cuffs.
- Extra support for elbows and arm muscles.
- Inner elastic bands to support the deltoid, triceps and trapezoid muscles.
- Reduction of muscular vibration
- Breathable
- Insertion of high quality Elasthane fibres for permanent maintenance of the garment's shape
- Seamless elastic fabric

- Maillot à manches longues avec col rond conçu pour améliorer la posture et le rendement
- Exosquelette pour soutien postural
- Soutien ciblé pour les muscles de la partie haute du dos, les articulations des épaules et la coiffe des rotateurs
- Soutien extra pour les coudes et les muscles des bras
- Bandes élastiques internes de soutien du deltoïde, du triceps et du trapèze
- Réduction des vibrations musculaires
- Respirant
- Introduction de fibres Elastan de haute qualité pour toujours maintenir la forme du vêtement.
- Tissu élastique sans coutures

SAIPH

ACTIVE
TENS

2024		MADE IN ITALY	OEKO-TEX® STANDARD 100 CERTIFIED	ADULT	S/M/L/XL/XXL	U700
				JUNIOR	XS	U701

91% POLYAMIDE 9% ELASTAN



002510
black/red



003708
white/cyan



000772
black/yellow fluo

Fino ad esaurimento scorte
While stocks last
Jusqu'à épuisement du stock

- Collo a giro progettata per migliorare postura e rendimento
- Esoscheletro a supporto posturale
- Supporto mirato per i muscoli della parte alta della schiena, articolazioni delle spalle e cuffie dei rotatori
- Supporto extra per gomiti e muscoli delle braccia
- Fasce elastiche interne a sostegno del deltoide, tricipite e trapezio
- Riduzione della vibrazione muscolare
- Traspirante
- Inserimento di fibre di Elastan di alta qualità per mantenere sempre la forma dell'indumento
- Tessuto elastico senza cuciture

- Short-sleeve shirt with crew neck designed to improve posture and performance.
- Exoskeleton for postural support.
- Targeted support for the muscles in the upper part of the back, shoulders and rotator cuffs.
- Extra support for elbows and arm muscles.
- Inner elastic bands to support the deltoid, triceps and trapezoid muscles.
- Reduction of muscular vibration
- Breathable
- Insertion of high quality Elasthane fibres for permanent maintenance of the garment's shape
- Seamless elastic fabric

- Maillot à manches courtes avec col rond conçu pour améliorer la posture et le rendement
- Exosquelette pour soutien postural
- Soutien ciblé pour les muscles de la partie haute du dos, les articulations des épaules et la coiffe des rotateurs.
- Soutien extra pour les coudes et les muscles des bras
- Bandes élastiques internes de soutien du deltoïde, du triceps et du trapèze
- Réduction des vibrations musculaires
- Respirant
- Introduction de fibres Elastan de haute qualité pour toujours maintenir la forme du vêtement.
- Tissu élastique sans coutures

CALEYO

ACTIVE
TENS

2024		MADE IN ITALY	OEKO-TEX® STANDARD 100 CERTIFIED	ADULT	S/M/L/XL/XXL	U708
				JUNIOR	XS	U709

91% POLYAMIDE 9% ELASTAN



003708
white/cyan



000772
black/yellow fluo

Fino ad esaurimento scorte
While stocks last
Jusqu'à épuisement du stock

- 3/4 che aiuta l'allineamento posturale di fianchi, cosce e dell'articolazione rotulea
- Esoscheletro altamente flessibile
- Supporto mirato per fianchi e ginocchia
- Traspiranti
- Inserimento di fibre di Elastan di alta qualità per mantenere sempre la forma dell'indumento
- Tessuto elastico senza cuciture

- 3/4 trousers that assist the postural training of hips, thighs and patellar articulation
- Highly flexible exoskeleton
- Targeted supports for hips and knees
- Breathable
- Insertion of high quality Elasthane fibres for permanent maintenance of the garment's shape
- Seamless elastic fabric

- Pantalon 3/4 qui aide l'alignement postural des hanches, des cuisses et de l'articulation rotulienne
- Exosquelette très flexible
- Support ciblé pour hanches et genoux
- Respirant
- Introduction de fibres Elastan de haute qualité pour toujours maintenir la forme du vêtement.
- Tissu élastique sans coutures

ARRIUS

ACTIVE
TENS

2024		MADE IN ITALY	OEKO-TEX® STANDARD 100 CERTIFIED	ADULT	S/M/L/XL/XXL	U705
				JUNIOR	XS	U706

91% POLYAMIDE 9% ELASTAN



003708
white/cyan



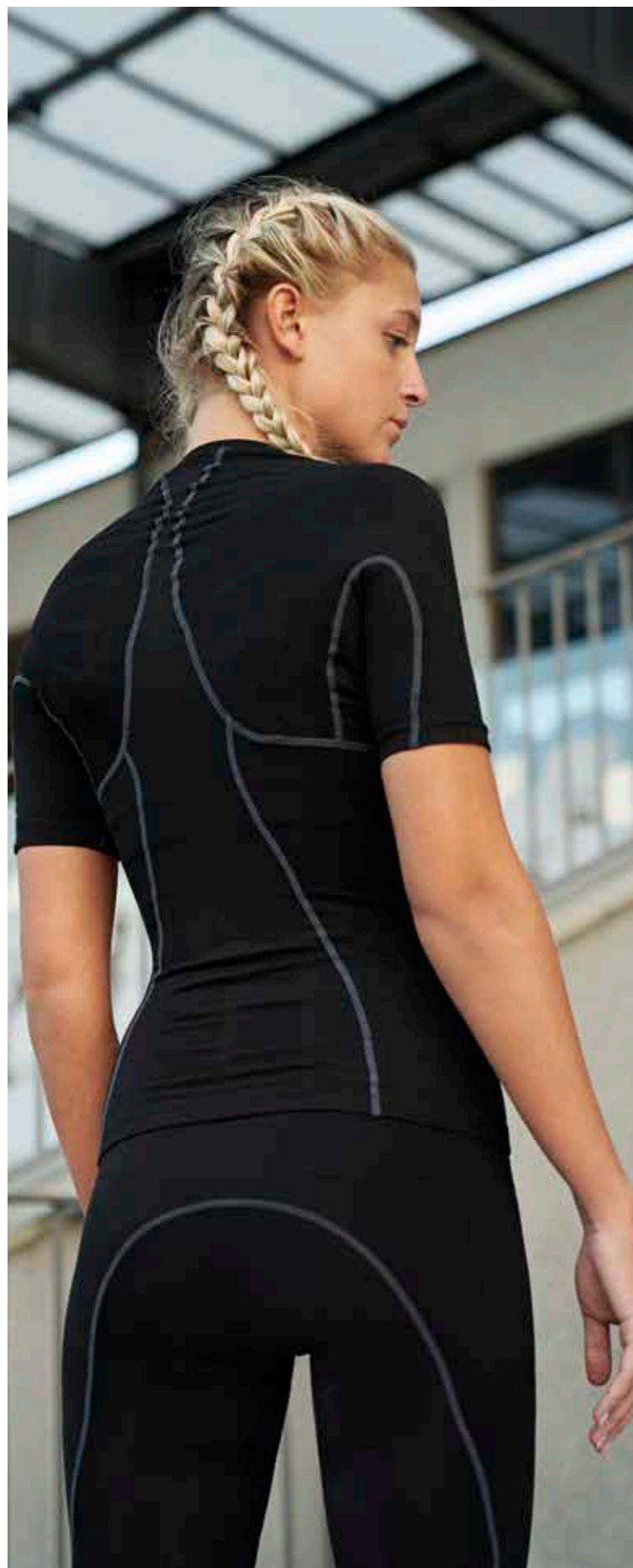
000772
black/yellow fluo

Fino ad esaurimento scorte
While stocks last
Jusqu'à épuisement du stock

- Progettato per sostenere quadricipiti, flessori e glutei
- Esoscheletro a supporto posturale.
- Ridotta vibrazione muscolare
- Traspiranti
- Inserimento di fibre di Elastan di alta qualità per mantenere la forma dell'indumento
- Tessuto elastico senza cuciture

- Targeted support for quadriceps, flexors and glutes.
- Exoskeleton for postural support.
- Reduced muscular vibration.
- Breathable.
- Insertion of high quality Elasthane fibres for permanent maintenance of the garment's shape
- Seamless elastic fabric

- Soutien ciblé pour quadriceps, fléchisseurs et fesses
- Exosquelette de soutien postural.
- Vibrations musculaires réduites
- Respirant
- Introduction de fibres Elastan de haute qualité pour toujours maintenir la forme du vêtement.
- Tissu élastique sans coutures



ACTIVE TENSE® LITE

Dopo oltre due anni di ricerca, Erreà® presenta il nuovo Active Tense® Lite.

Gli innovativi capi della linea AT Lite si rivolgono a chi non vuole rinunciare al supporto ergonomico posturale di Active Tense® nella vita quotidiana. Il tessuto estremamente leggero, il design ton su ton e il collo a "V" della maglia rendono i capi AT Lite eleganti, comodi e confortevoli, ideali per essere indossati in qualunque momento della giornata. Allo stesso tempo, l'esoscheletro termosaldato e la costruzione del capo in zone a tensione differenziata offrono un sostegno efficace ad articolazioni e gruppi muscolari contribuendo a migliorare la performance e favorendo il recupero nel dopo gara, allenamento o post-infortunio.

ACTIVE TENSE® LITE

Following more than two years of research, Erreà® presents the new Active Tense® Lite.

The innovative AT Lite apparel is designed for those who want the ergonomic posture support of Active Tense® also in their daily lives. The ultralight fabric, single-colour, "V" neck design of the shirts make AT Lite garments elegant and comfortable, and ideally suited for use at any time during the day. In addition, the heatwelded exoskeleton and the differentiated fitting point construction of the garment provide effective support to joints and muscle groups for improved performance and recovery-rates after competitions, training and injuries.

ACTIVE TENSE® LITE

Après plus de deux ans de recherches, Erreà® présente le nouvel Active Tense® Lite.

Les vêtements innovants de la ligne AT Lite ont été conçus pour ceux qui ne peuvent pas se passer du soutien ergonomique postural d'Active Tense® dans leur activités quotidiennes. Le tissu extrêmement léger, le design ton sur ton et le col en V de ce maillot rendent les vêtements AT Lite élégants, pratiques et confortables, idéaux pour être portés dans toutes les occasions et à tout moment de la journée. En même temps, l'exosquelette thermo-soudé et la structure du vêtement en zones à tension différenciée offrent un soutien efficace aux articulations et aux groupes musculaires permettant d'améliorer la performance et favorisant la récupération après la compétition, l'entraînement ou un accident.

2024	MADE IN ITALY	OEKO-TEX® CONFIDENCE IN TEXTILES STANDARD 100 074744.0 CENTROCOT Tested for harmful substances. www.oeko-tex.com/standard100	ADULT	S/M/L/XL/XXL	UMO10C
			JUNIOR	XS	UMO11C

94% POLYAMIDE 6% ELASTAN



- Maglia collo a giro, dotata di zone a tensione differenziata ed esoscheletro in resina
- L'esoscheletro in resina si concentra sulla parte superiore del corpo con lo scopo di stabilizzare le spalle e migliorare la postura
- Le fasce elastiche interne sono studiate e realizzate per sostenere il deltoide e il trapezio
- Le zone a tensione differenziata grazie ai diversi attriti determinano effetti stabilizzatori sui muscoli e sulle articolazioni

- Short-sleeve shirt crew neck with differentiated tension zones and exoskeleton in resin
- The resin exoskeleton is positioned and concentrated on the upper part of the body for the purpose of stabilizing the shoulders and improving posture
- The inner elastic bands are designed and produced to support the deltoid and trapezoid muscles
- The differentiated tension zones, because of different frictions, have stabilizing effects on the muscles and joints

- Maillot col rond à manches courtes avec des zones à tension différenciée et un exosquelette en résine
- L'exosquelette en résine est positionné et se concentre sur la partie supérieure du corps dans le but de stabiliser les épaules et d'améliorer la posture
- Les bandes élastiques internes ont été étudiées et réalisées pour soutenir le deltoïde et le trapèze
- Les zones à tension différenciée grâce aux différents frottements déterminent des effets stabilisateurs sur les muscles et sur les articulations

2024	MADE IN ITALY	OEKO-TEX® CONFIDENCE IN TEXTILES STANDARD 100 074744.0 CENTROCOT Tested for harmful substances. www.oeko-tex.com/standard100	ADULT	S/M/L/XL/XXL	UPO60Z
			JUNIOR	XS	UPO61Z

94% POLYAMIDE 6% ELASTAN



- Dotato di zone a tensione differenziata ed esoscheletro in resina
- L'esoscheletro in resina si concentra sui principali muscoli della coscia per migliorarne la funzionalità
- Le fasce elastiche interne sono realizzate per sostenere i quadricipiti e i flessori e creano un importante supporto alle fasce e alla muscolatura degli adduttori
- La vibrazione muscolare risulta sensibilmente ridotta

- Bermudas with differentiated tension zones and exoskeleton in resin
- The resin exoskeleton is concentrated on the main muscles of the thigh to improve their function
- The inner elastic bands are provided to support the quadriceps and flexors, and create an important support to the muscle fibres of the adductors
- Muscular vibration is noticeably reduced

- Bermuda avec des zones à tension différenciée et un exosquelette en résine.
- L'exosquelette en résine se concentre sur les principaux muscles de la cuisse pour en améliorer la fonctionnalité.
- Les bandes élastiques internes, réalisées pour soutenir les quadriceps et les fléchisseurs, créent un important soutien aux bandes et à la musculature des adducteurs.
- Les vibrations musculaires sont sensiblement réduites



DAVID



2024



MADE IN ITALY



ADULT

S/M - L/XL - XXL

UMOD0C

JUNIOR

XS

UMOD1C

85% POLYAMIDE 10% POLYESTER 5% ELASTANE

- Manica e collo a giro
- Inserti tridimensionali localizzati nella parte superiore per mantenere il corpo asciutto e caldo
- Alta traspirabilità
- Rapido assorbimento del sudore
- Effetto "second skin"
- Tecnologia Seamless
- Isolamento termico
- Estrema leggerezza
- Taschino posteriore porta GPS
- Made in Italy

- Set-in sleeves and crew neck
- Three-dimensional inserts on upper portion
- Optimum breathability
- Rapid sweat absorption
- "Second skin" effect
- Seamless technology
- Thermal insulation
- Extreme lightness
- Back pocket for GPS
- Made in Italy

- Manches montées et col rond
- Pièces tridimensionnelles situées dans la partie supérieure
- Grande respirabilité
- Absorption rapide de la transpiration
- Effet « deuxième peau »
- Technologie sans coutures
- Isolation thermique
- Extrême légèreté
- Petite poche arrière porte-GPS
- Made in Italy



00120
black



00020
red



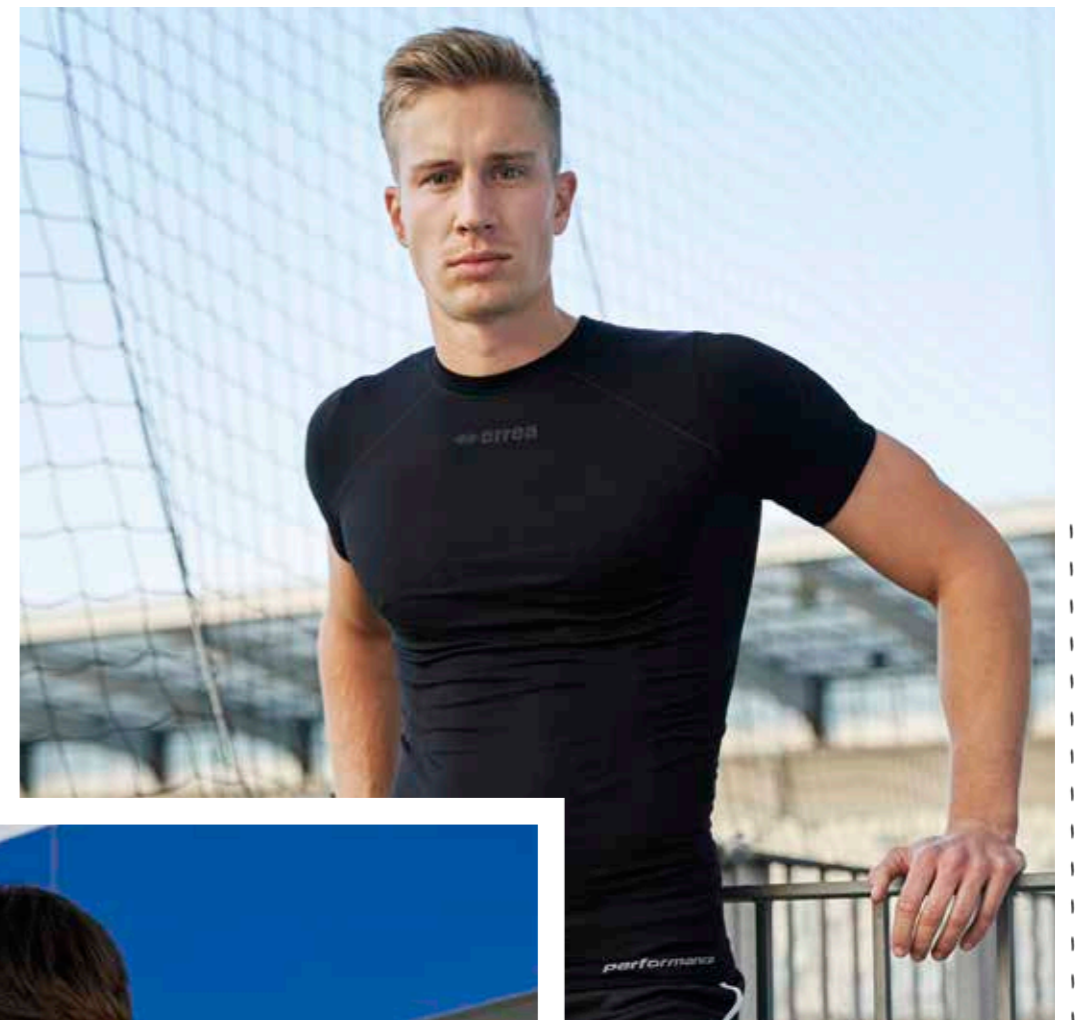
00010
white



00090
navy



00070
blue



ENYA



2024



MADE IN ITALY



ADULT

S/M - L/XL - XXL

UMOF0Z

JUNIOR

XS

UMOF1Z

85% POLYAMIDE 15% POLYESTER

- Collo a giro
- Alta traspirabilità
- Rapido assorbimento e dispersione del sudore
- Effetto "second skin"
- Tecnologia Seamless
- Ideale regolazione termica corporea
- Estrema leggerezza
- Taschino posteriore porta GPS
- Made in Italy

- Crew neck
- Optimum breathability
- Rapid absorption and elimination of sweat
- "Second skin" effect
- Seamless technology
- Ideal body temperature regulation
- Extreme lightness
- Back pocket for GPS
- Made in Italy

- Col rond
- Grande respirabilité
- Absorption rapide et dispersion de la transpiration
- Effet « deuxième peau »
- Technologie sans coutures
- Régulation thermique corporelle idéale
- Extrême légèreté
- Petite poche arrière porte-GPS
- Made in Italy



00120
black



00010
white



00090
navy



DARYL



2024		MADE IN ITALY	OEKO-TEX® STANDARD 100	ADULT	S/M - L/XL - XXL	UMOBOL
				JUNIOR	XXS - XS	UMOB1L

85% POLYAMIDE 10% POLYESTER 5% ELASTANE

- Manica a giro
 - Collo a lupetto
 - Inserti tridimensionali localizzati nella parte superiore
 - Alta traspirabilità
 - Rapido assorbimento del sudore
 - Effetto "second skin"
 - Tecnologia Seamless
 - Isolamento termico
 - Estrema leggerezza
 - Taschino posteriore porta GPS
 - Made in Italy
- Set-in sleeves
 - Turtleneck
 - Three-dimensional inserts on upper portion
 - Optimum breathability
 - Rapid sweat absorption
 - "Second skin" effect
 - Seamless technology
 - Thermal insulation
 - Extreme lightness
 - Back pocket for GPS
 - Made in Italy
- Manches montées
 - Col montant
 - Pièces tridimensionnelles situées dans la partie supérieure
 - Grande respirabilité
 - Absorption rapide de la transpiration
 - Effet « deuxième peau »
 - Technologie sans coutures
 - Isolation thermique
 - Légèreté extrême
 - Petite poche arrière porte-GPS
 - Made in Italy



00120 black



00020 red, 00010 white, 00090 navy



00070 blue

DAVOR



2024		MADE IN ITALY	OEKO-TEX® STANDARD 100	ADULT	S/M - L/XL - XXL	UMOCOL
				JUNIOR	XXS - XS	UMOC1L

85% POLYAMIDE 10% POLYESTER 5% ELASTANE

- Manica e collo a giro
 - Inserti tridimensionali localizzati nella parte superiore per mantenere il corpo asciutto e caldo
 - Alta traspirabilità
 - Rapido assorbimento del sudore
 - Effetto "second skin"
 - Tecnologia Seamless
 - Isolamento termico
 - Estrema leggerezza
 - Taschino posteriore porta GPS
 - Made in Italy
- Set-in sleeves and crew neck
 - Three-dimensional inserts on upper portion
 - Optimum breathability
 - Rapid sweat absorption
 - "Second skin" effect
 - Seamless technology
 - Thermal insulation
 - Extreme lightness
 - Back pocket for GPS
 - Made in Italy
- Manches montées et col rond
 - Pièces tridimensionnelles situées dans la partie supérieure
 - Grande respirabilité
 - Absorption rapide de la transpiration
 - Effet « deuxième peau »
 - Technologie sans coutures
 - Isolation thermique
 - Extrême légèreté
 - Petite poche arrière porte-GPS
 - Made in Italy



00090 navy



00020 red, 00010 white, 00120 black, 00040 green, 00130 orange



00150 maroon, 00070 blue, 00030 yellow, 00060 fuchsia

DARIS

2024		OEKO-TEX® STANDARD 100	ADULT	S/M - L/XL - XXL/3XL	FMOBOL
			JUNIOR	YXS - XXS/XS	FMOB1L

90% POLYESTER 10% ELASTANE

- Manica raglan
 - Collo a giro
 - Ideale per il periodo invernale
 - Isolamento termico
- Raglan sleeve
 - Crew neck
 - Ideal for wintertime
 - Thermal insulation
- Manches raglan
 - Ras du cou
 - Idéal pour la période hivernale
 - Isolation thermique



00010 white



00150 maroon, 00020 red, 00130 orange, 00030 yellow, 00040 green



00070 blue, 00090 navy, 00120 black, 32120 anthracite melange

DAMIAN



2024		MADE IN ITALY	OEKO-TEX® STANDARD 100	ADULT	S/M - L/XL - XXL	UPOCOZ
				JUNIOR	YXS - XXS - XS	UPOC1Z

85% POLYAMIDE 10% POLYESTER 5% ELASTANE

- Alta traspirabilità
 - Rapido assorbimento del sudore
 - Effetto "second skin"
 - Tecnologia seamless
 - Isolamento termico
 - Estrema leggerezza
 - Made in Italy
- Optimum breathability
 - Rapid sweat absorption
 - "Second skin" effect
 - Seamless technology
 - Thermal insulation
 - Extreme lightness
 - Made in Italy
- Grande respirabilité
 - Absorption rapide de la transpiration
 - Effet « deuxième peau »
 - Technologie sans coutures
 - Isolation thermique
 - Extrême légèreté
 - Made in Italy



00090 navy



00120 black

DIAMANTIS

ELEGANTE, SOFISTICATO, ORIGINALE.

Traspirazione, isolamento termico, tenuta del calore, libertà di movimento.

Il nuovo coordinato Diamantis, si caratterizza per eleganza grazie alla stripe con stampa transfer che ne definisce l'estetica moderna. L'applicazione delle fettucce permette di sfoggiare con orgoglio i colori della tua squadra.

Idea per chi è alla ricerca di un look moderno e attuale, caratterizzato da dettagli sofisticati che esaltano l'estetica e lo stile.

L'intera gamma di prodotti è realizzata con maniche raglan per garantire la massima libertà di movimento in ogni situazione, in campo e fuori.

I tessuti con cui sono realizzati i capi permettono di creare diverse combinazioni di strati per esaudire le diverse esigenze tecniche per le performance in campo e per il tempo libero.

Isolamento termico, traspirazione e leggerezza rappresentano le caratteristiche distinte di questa linea mentre gli inserti in full garantiscono una protezione termica ottimale.

Disponibile in diverse varianti colore, inserto in tinta e fettucce colorate sono state studiate ad hoc per esaltare i tuoi colori societari.

ELEGANT, SOPHISTICATED, ORIGINAL.

Breathability, thermal insulation, heat retention, freedom of movement.

The new Diamantis strip is elegant and characterized by a modern appearance thanks to the insert with sublimation printing. The application of stripes means you can wear your team's colours with pride.

Ideal for anyone seeking a modern and trendy look, characterized by sophisticated details which highlight the overall appearance and style.

The whole range of products is made with raglan sleeves to guarantee maximum freedom of movement in any situation, both on and off the field.

The fabrics used to manufacture the garments make it possible to create different combinations of layers to meet diverse technical requirements for performance on the field and during leisure time.

Thermal insulation, breathability and lightness are the distinctive features of this line, while the inserts in full fabric ensure maximum thermal protection.

Available in various colour schemes, matching insert and coloured stripes, they have been designed ad hoc to highlight your club's colours.

ÉLÉGANT, SOPHISTIQUÉ, ORIGINEL.

Transpiration, isolation thermique, conservation de la chaleur, liberté de mouvement.

La nouvelle tenue Diamantis est caractérisée par l'élégance et l'esthétique moderne que lui confère la bande imprimée par sublimation. L'application des extrarats permet d'arborez avec fierté les couleurs de votre équipe.

Tenue idéale pour tous ceux qui sont à la recherche d'un look moderne et actuel, caractérisé par des détails sophistiqués qui mettent en valeur l'esthétique et le style.

La gamme de produits est entièrement réalisée avec des manches raglan pour une liberté maximale de mouvement en toute situation, sur le terrain et en dehors.

Les tissus avec lesquels sont réalisés les articles permettent de créer différentes combinaisons de couches répondant aux diverses exigences techniques pour les performances sur le terrain et pendant les loisirs.

Isolation thermique, transpiration et légèreté sont les caractéristiques distinctives de cette ligne, dans laquelle les empiècements en full garantissent une protection thermique optimale.

Disponibles dans plusieurs variantes de couleur, l'empiecement de teinte identique et les extrarats colorés ont été spécialement étudiés pour rehausser les couleurs de votre club.



LUCAS

RICERCATO, FUNZIONALE, VERSATILE.

Comfort, traspirazione, regolazione del calore corporeo

Il coordinato Lucas presenta una linea elegante, lineare con inserti in contrasto sulle spalle che non ostacolano il naturale movimento grazie a cuciture appositamente studiate, anche durante la gara.

Ideale per chi è alla ricerca di un look classico, attento alla cura dei più minuti dettagli. L'intera gamma di prodotti è realizzata con maniche raglan per garantire la massima libertà di movimento in ogni situazione, in campo e fuori.

I tessuti disponibili permettono di creare soluzioni differenti per le diverse situazioni climatiche. Traspirazione, morbidezza e resistenza sono le caratteristiche tecniche principali di questa linea.

Disponibile in diverse varianti colore a base classica con inserti in contrasto sono ideati per rappresentare al meglio i colori della tua squadra.

REFINED, FUNCTIONAL, VERSATILE.

Comfort, breathability, body temperature regulation.

The Lucas strip presents an elegant, linear look with contrasting inserts on the shoulders which, thanks to the specially designed seams, never hinder natural movements, not even during matches.

Ideal for those seeking a classic look, attentive to even the smallest detail. The whole range of products is made with raglan sleeves to guarantee maximum freedom of movement in any situation, both on and off the field.

The fabrics available make it possible to create different solutions for different climatic conditions.

Breathability, softness and strength are the main technical features of this line. Available in various classic colour schemes with contrasting inserts they are ideal for really showing off your team's colours.

PRISÉ, FONCTIONNEL, VERSATILE.

Confort, transpiration, réglage de la chaleur corporelle

La tenue Lucas possède une ligne élégante, linéaire, avec des empiècements en contraste sur les épaules qui n'entravent pas le mouvement naturel, même pendant les compétitions, grâce à des coutures spécialement étudiées.

Tenue idéale pour tous ceux qui veulent un look classique, attentif au soin des moindres détails.

La gamme de produits est entièrement réalisée avec des manches raglan pour une liberté maximale de mouvement en toute situation, sur le terrain et en dehors.

Les tissus disponibles permettent de créer de nombreuses solutions répondant aux différentes conditions climatiques.

Transpiration, souplesse et résistance sont les principales caractéristiques techniques de cette ligne.

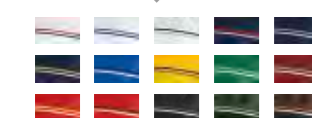
Disponibles en différentes variantes de couleur à base classique, avec des empiècements en contraste, ils représentent de manière idéale les couleurs de votre équipe.



Look DIAMANTIS



Shirt colours



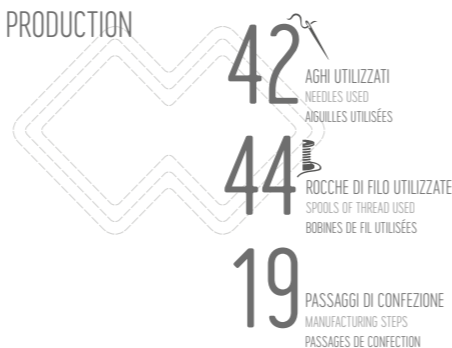
76

2022 COLLECTION

Look's fabrics

- ▶ MUNDIAL
- ▶ CARBON
- ▶ MICROSOFT
- ▶ PIQUET
- ▶ WARM UP

PRODUCTION



▶ PIÙ DI 3 METRI DI BINDELLI PER OGNI SINGOLA MAGLIA
Over 3 metres of tape used for each shirt
Plus de 3 mètres de rubans utilisés pour chaque maillot



▶ STAMPA TRANSFER
Sublimation printing
Impression par sublimation

▶ AGO PUNTA PALLA PER UNA MAGGIORE CURA DEL TESSUTO
Ball point needle for greater care of the fabric
Aiguille à pointe boule pour un meilleur soin du tissu

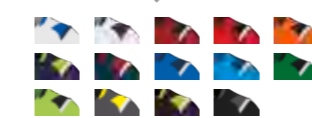
▶ CONTROLLO QUALITÀ ESEGUITO SU OGNI SINGOLO CAPO
Quality control performed on every single garment
Contrôle qualité sur chaque article



Look LUCAS



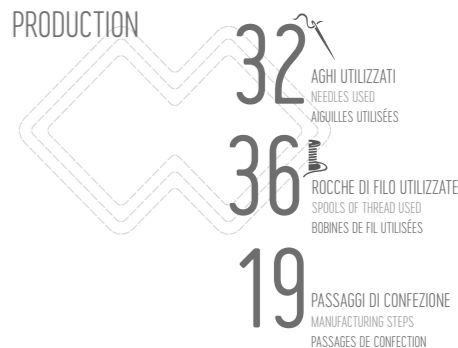
Shirt colours



Look's fabrics

- ▶ MUNDIAL
- ▶ PIQUET
- ▶ WARM UP

PRODUCTION



▶ 10 LAVORAZIONI PER L'APPLICAZIONE DEGLI INSERTI
10 processes for applying inserts
10 étapes pour l'application des empiècements



▶ 14 LAVORAZIONI PER L'ASSEMBLAGGIO DELLE MANICHE
14 processes for assembling sleeves
14 étapes pour l'assemblage des manches

▶ CONTROLLO QUALITÀ ESEGUITO SU OGNI SINGOLO CAPO
Quality control performed on every single garment
Contrôle qualité sur chaque article



77

2022 COLLECTION

BRANDON

PRATICO, DINAMICO, COLORATO.

Modernità, traspirazione, tenuta termica.
 Il coordinato Brandon sfoggia due colori distinti che spezzano graficamente il capo donando un effetto di dinamicità e modernità.
 Ottimo per chi è alla ricerca di un look moderno caratterizzato da dettagli che ne esaltano lo stile pratico.
 Le tinte invernali della linea offrono una tenuta termica ottimale mentre le maglie gara a giaccollo garantiscono una traspirazione perfetta.
 Ideale per chi ricerca un capo colorato e vivace e dalla vestibilità semi aderente.
 Disponibile in diverse varianti colore, permette di soddisfare le diverse esigenze delle società sportive.

PRACTICAL, DYNAMIC, VIBRANT.

Modernity, breathability, heat retention.
 The Brandon strip boasts two distinct colours which graphically break up the garment, giving it a dynamic, modern effect.
 Excellent for anyone seeking a modern look, characterized by details which highlight the practical style.
 The winter sweatsuits in the line offer excellent heat retention while the round-neck match shirts guarantee perfect breathability.
 Ideal for those looking for a colourful and bright garment with a semi-fitted design.
 Available in various colour options, to meet the various needs of sports clubs.

PRATIQUE, DYNAMIQUE, VIVANT.

Modernité, respiration parfaite, conservation optimale.
 La tenue Brandon arbore deux couleurs distinctes qui « cassent » le graphisme de l'article en lui donnant un effet dynamique et moderne.
 Excellent pour tous ceux qui sont à la recherche d'un look moderne caractérisé par des détails qui mettent en valeur son style pratique.
 Les sweats d'hiver de cette ligne offrent une conservation optimale de la chaleur, alors que les maillots de compétition au col rond garantissent une respiration parfaite.
 Idéal pour tous ceux qui recherchent un article coloré et vif avec une coupe semi-moulante.
 Disponible dans plusieurs variantes de couleur, permet de répondre aux différentes exigences des clubs de sport.



CLASSIC

UNIVERSALE, MULTIFUNZIONALE, ATTUALE.

Versatilità, finezza, traspirazione.
 Il coordinato Classic riunisce i capi sportivi che da sempre fanno parte di tutte le discipline sportive per dare vita a una linea sempre moderna e contemporanea.
 Ideale per chi ama modelli classici e puliti.
 Linea dalle caratteristiche versatili, permette di soddisfare le esigenze di differenti discipline.
 Le maglie gara si caratterizzano per l'ottima traspirazione che assicurano. Il tessuto con cui sono realizzati, asciuga velocemente, non squalisce e mantiene la piega anche dopo i lavaggi permettendo di evitare la stiratura.
 Morbidità e resistenza distinguono i capi a manica lunga, ideali per le giornate più fredde.
 Disponibili in una vasta gamma colori per soddisfare le richieste più esigenti e diversificate dei club sportivi.

UNIVERSAL, MULTIFUNCTIONAL, CONTEMPORARY.

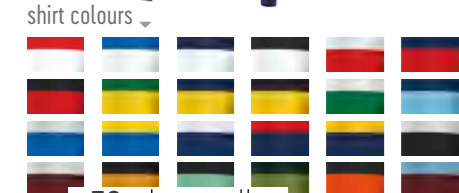
Versatility, elegance, breathability.
 The Classic strip brings together sporting garments which have always been a part of all sporting disciplines to create a line which is forever modern and contemporary.
 Ideal for those who love classic and clean styles.
 This line with versatile characteristics makes it possible to meet the needs of different sporting categories.
 The competition shirts are characterized by the excellent breathability they guarantee. The fabric they are made of is quick drying, doesn't crease and holds its shape even after washing, so there's no need for ironing.
 Softness and strength are the main features of the long-sleeve shirts, ideal for colder days.
 Available in a wide range of colours to meet the most demanding and diversified requests of sporting clubs.

UNIVERSEL, MULTIFONCTIONNEL, CONTEMPORAINE.

Flexibilité, finesse, respiration.
 La tenue Classic réunit les articles de sport qui, depuis toujours, font partie de toutes les disciplines sportives, pour donner vie à une ligne toujours moderne et contemporaine.
 Tenue idéale pour tous ceux qui aiment les modèles classiques et épurés.
 Ligne aux caractéristiques polyvalentes permettant de répondre aux exigences de différentes disciplines.
 Les maillots de compétition se caractérisent par l'excellente respiration qu'ils garantissent. Le tissu avec lequel ils sont confectionnés sèche rapidement, ne se chiffonne pas et garde le pli même après les lavages, ce qui permet de ne pas avoir à les repasser.
 Souplesse et résistance caractérisent les articles à manches longues, idéaux pour les journées les plus froides.
 Disponibles dans une vaste gamme de couleurs pour répondre aux demandes les plus exigeantes et variées des clubs de sport.



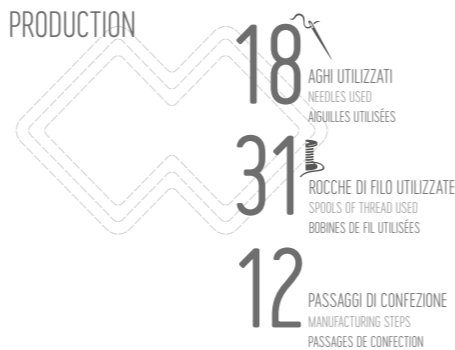
Look BRANDON



Look's fabrics

- ▶ SKIN
- ▶ MUNDIAL
- ▶ KAMELIA
- ▶ FULL
- ▶ PIQUET
- ▶ WARM-UP

PRODUCTION



▶ 2 PASSAGGI IN 2 MACCHINE PER L'APPLICAZIONE FRONTALE
2 manufacturing steps with 2 machines for the front application
2 passages dans 2 machines pour l'application frontale

▶ 5 OPERAZIONI DI ASSEMBLAGGIO DEL TESSUTO
5 operations to assemble the fabric
5 opérations d'assemblage du tissu

▶ 1/3 DI PASSAGGI MANUALI
1/3 of the steps by hand
1/3 de passages manuels

▶ 3 MACCHINE DIFFERENTI UTILIZZATE
3 different machines used
3 machines différentes utilisées

▶ CONTROLLO QUALITÀ ESEGUITO SU OGNI SINGOLO CAPO
Quality control performed on every single garment
Contrôle qualité sur chaque article



Look CLASSIC



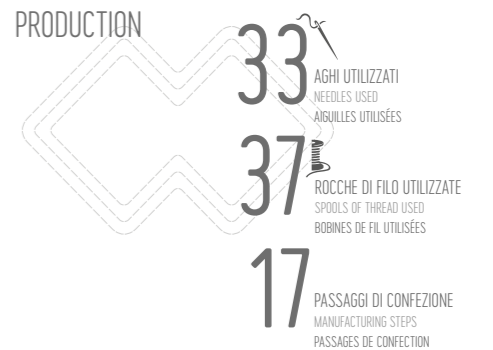
Shirt colours LENNOX



Look's fabrics

- ▶ UTILITY
- ▶ SKIN
- ▶ MUNDIAL
- ▶ PIQUET
- ▶ COTTON PIQUET
- ▶ KAMELIA
- ▶ B-HIVE
- ▶ RASIC

PRODUCTION



▶ QUASI UN METRO DI SBIECO UTILIZZATO PER OGNI SINGOLA MAGLIA
Almost one metre of bias binding used for each shirt
Presque un mètre de biais utilisé pour chaque maillot

▶ 5 OPERAZIONI DI ASSEMBLAGGIO DEL TESSUTO
5 operations to assemble the fabric
5 opérations d'assemblage du tissu

▶ 3 PASSAGGI DI RIFINITURA
3 finishing steps
3 passages de finition

▶ CONTROLLO QUALITÀ ESEGUITO SU OGNI SINGOLO CAPO
Quality control performed on every single garment
Contrôle qualité sur chaque article

