



H I S T O R I C A L S F O O T B A L L

TI-CROSS HISTORICALS FOOTBALL



2022



CUSTOM
SUBLIMATION



ADULT

S/M/L/XL/XXL

FMA30C

TI-ENERGY 3.0 100% POLYESTER - 130 g/mq

- Filato Ti-energy antivirale e antibatterico
- Stampa transfer e manica a raglan
- Collo a giro e parasudore interno elastico
- Polso e orlo sul fondo
- Ti-energy anti-viral and anti-bacterial fabric
- Sublimated printed with raglan sleeves
- Crew neck with internal elastic neck tape
- Cuff and hem on bottom
- Ti-energy tissu anti-viral et antibactérien
- En sublimation et manche raglan
- Col rond avec bande de propreté interne élastique
- Poignet et ourlet au le bas



TI-HALF HISTORICALS FOOTBALL



2022



CUSTOM
SUBLIMATION



ADULT

S/M/L/XL/XXL

FMA40C

TI-ENERGY 3.0 100% POLYESTER - 130 g/mq

- Filato Ti-energy antivirale e antibatterico
- Stampa transfer e manica a giro
- Collo a giro e parasudore interno elastico
- Polso e orlo sul fondo
- Ti-energy anti-viral and anti-bacterial fabric
- Sublimated printed with set-in sleeves
- Crew neck with internal elastic neck tape
- Cuff and hem on bottom
- Ti-energy tissu anti-viral et antibactérien
- En sublimation et manches montées
- Col rond avec bande de propreté interne élastique
- Poignet et ourlet au le bas



TI-HOOP HISTORICALS FOOTBALL



2022



CUSTOM
SUBLIMATION



ADULT

S/M/L/XL/XXL

FMA50C

TI-ENERGY 3.0 100% POLYESTER - 130 g/mq

- Filato Ti-energy antivirale e antibatterico
- Stampa transfer e manica a raglan
- Collo a giro e parasudore interno elastico
- Polso e orlo sul fondo
- Ti-energy anti-viral and anti-bacterial fabric
- Sublimated printed with raglan sleeves
- Crew neck with internal elastic neck tape
- Cuff and hem on bottom
- Ti-energy tissu anti-viral et antibactérien
- En sublimation et manche raglan
- Col rond avec bande de propreté interne élastique
- Poignet et ourlet au le bas



TI-MOTHY SHORT TRANSFER 3.0 SHORT NEW SKIN SHORT



01920 navy/yellow



TI-SLASH HISTORICALS FOOTBALL



2022



CUSTOM
SUBLIMATION



ADULT

S/M/L/XL/XXL

FMA60C

TI-ENERGY 3.0 100% POLYESTER - 130 g/mq

- Filato Ti-energy antivirale e antibatterico
- Stampa transfer e manica a raglan
- Collo a giro e parasudore interno elastico
- Polso e orlo sul fondo
- Ti-energy anti-viral and anti-bacterial fabric
- Sublimated printed with raglan sleeves
- Crew neck with internal elastic neck tape
- Cuff and hem on bottom
- Ti-energy tissu anti-viral et antibactérien
- En sublimation et manche raglan
- Col rond avec bande de propreté interne élastique
- Poignet et ourlet au le bas



00210 white/red



TI-MOTHY SHORT TRANSFER 3.0 SHORT NEW SKIN SHORT

ELLIOT

2022



CUSTOM
SUBLIMATION



ADULT

S/M/L/XL/XXL

FM670C

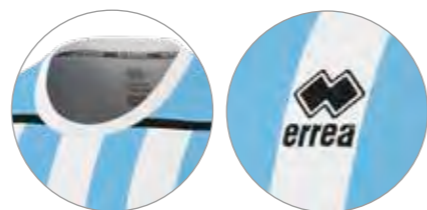
JUNIOR

YXS/XXS/XS

FM671C

SKIN 100% POLYESTER - 125 g/mq

- Stampa transfer e manica a giro
- Collo a giro e parasudore interno elastico
- Polso e orlo su fondo
- Sublimated printed with set-in sleeves
- Crew neck with internal elastic neck tape
- Cuff and hem on bottom
- En sublimation et manche montées
- Col rond avec bande de propreté interne élastique
- Poignet et ourlet au le bas



01100
sky blue/white



02500
black/white



00500
red/white



01500
blue/white



00900
green/white



02530
black/green



01840
royal/maroon



02560
black/blue



04660
black/amber



00520
red/yellow



00920
green/yellow



01920
navy/yellow



02520
black/yellow



01910
navy/red



02510
black/red



BONN
SHORT



NEW SKIN
SHORT



TRANSFER 3.0
SHORT



HECTOR

BHIVE

2024



ADULT	S/M/L/XL/XXL	GMOFOC
JUNIOR	XS	GMOF1C

B-HIVE 100% POLYESTER - 135 g/mq

- Manica a giro
- Collo Coreana e fintino con un bottone
- Carrè con tessuto al rovescio
- Code di topo sulle spalle
- Polso manica corta in tessuto
- Inserti laterali in contrasto
- Set-in sleeves
- Mandarin collar and placket with one button
- Yoke in reversed fabric
- Rattail trim on the shoulders
- Short sleeves with fabric cuff
- Contrasting inserts on sides
- Manches montées
- Col droit et patte avec un bouton
- Pièce carrée avec tissu retourné
- Queues de rat sur les épaules
- Poignets manches courtes en tissu
- Pièces latérales en contraste



BARNEY
SHORT

BONN
SHORT

EDO
SHORT

NEW SKIN
SHORT



PRAGA 3.0

BHIVE

2022



CUSTOM
SUBLIMATION



ADULT

S/M/L/XL/XXL/3XL

FM950C

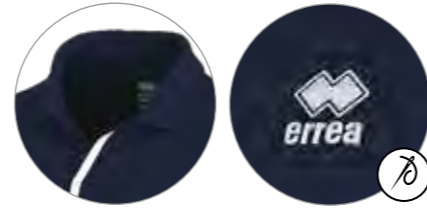
JUNIOR

YXS/XXS/XS

FM951C

B-HIVE 100% POLYESTER - 135 g/mq

- Manica a giro con polso
- Collo a camicia con 2 bottoni
- Applicazione verticale nel fintino in contrasto
- Set-in sleeves with cuff
- Shirt-collar with placket neck with buttons
- Vertical application in contrast
- Emmanchure avec poignet
- Col chemise avec deux boutons
- Double couche verticale en contraste



NEW SKIN
SHORT

BONN
SHORT

EDO
SHORT



DIAMANTIS

2024



ADULT S/M/L/XL/XXL/3XL/4XL

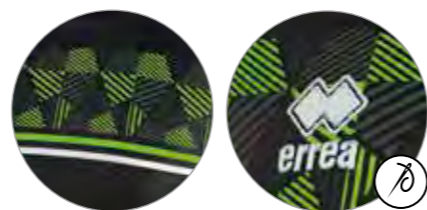
FM870C

JUNIOR YXS/XXS/XS

FM871C

MUNDIAL 100% POLYESTER - 145 g/mq

- Inserto in transfer
- Manica raglan
- Parasudore interno elastico
- Girocollo
- Fettucce in contrasto
- Sublimated insert
- Raglan sleeve
- Internal elastic neck tape
- Crew neck
- Stripes in contrast
- Insert en sublimation
- Manche raglan
- Bande de propreté interne élastique
- Ras de cou
- Binding en contraste



19540

black/green fluo/white



05120

white/red/navy



05210

white/blue/navy



55690

white/black/after eight



05850

green/grey/white



05730

yellow/black/anthracite



00660

red/yellow/white



00670

red/black/white



03280

maroon/grey/white



06640

blue/navy/white



07430

navy/grey/white



02060

navy/red/white



03480

navy/yellow/white



08860

black/orange fluo/white



07780

black/anthracite/white

DREAM WOMAN
SPECIAL ORDER

CUSTOM
SUBLIMATION

IT FITS LIKE
LENNY

ONLY COLOURS
DIAMANTIS SHIRT

ADULT S/M/L/XL/XXL/3XL

PMJI3C

JUNIOR YXS/XXS/XS

PMJI4C

MIN. 50 PCS min. 10 per size with multiples of 2



BONN
SHORT



EDO
SHORT



NEW SKIN
SHORT



TI-MOTHY



2023



ADULT
JUNIOR

S/M/L/XL/XXL/3XL
YXS/XXS/XS

FMA20C
FMA21C

TI-ENERGY 3.0 100% POLYESTER - 130 g/mq

- Filato Ti-energy antivirale e antibatterico
- Manica a giro
- Collo a giro con inserto e parasudore interno elastico
- Polso e orlo sul fondo

- Ti-energy anti-viral and anti-bacterial fabric
- Set-in sleeves
- Crew neck with insert and internal elastic neck tape
- Cuff and hem on bottom

- Ti-energy tissu anti-viral et antibactérien
- Manches montées
- Col rond avec insert et bande de propreté interne élastique
- Poignet et ourlet au le bas



TI-MOTHY SHORT



2023



ADULT
JUNIOR

S/M/L/XL/XXL
YXS/XXS/XS

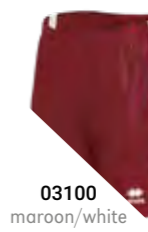
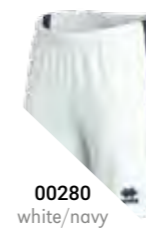
FPA10Z
FPA11Z

TI-ENERGY 3.0 100% POLYESTER - 130 g/mq

- Filato Ti-energy antivirale e antibatterico
- Elastico in vita con laccioli regolabili
- Inserto laterale in contrasto

- Ti-energy anti-viral and anti-bacterial fabric
- Elastic waistband and adjustable drawstring
- Contrasting insert on sides

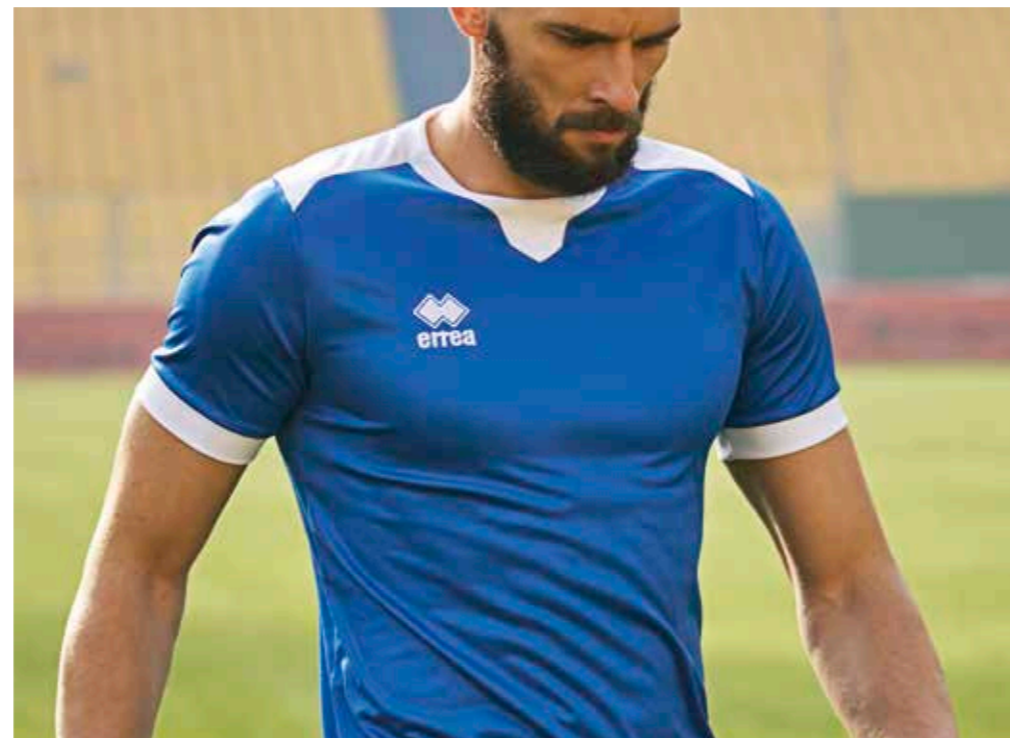
- Ti-energy tissu anti-viral et antibactérien
- Élastique à la taille et lacets réglables
- Insert latérale en contraste



TI-MOTHY
SHORT

EDO
SHORT

NEW SKIN
SHORT



LUCAS

► LENNY WOMAN MODEL

2022



ADULT	S/M/L/XL/XXL/3XL/4XL	FM680C
JUNIOR	YXS/XXS/XS	FM681C
KID	2YXS	FM682C

MUNDIAL 100% POLYESTER - 145 g/mq

UTILITY 100% POLYESTER - 145 g/mq

- Manica raglan
- Collo a V con doppio fintino e parasudore interno elastico
- Inserti in tessuto Utility e Skin
- Fondo maglia con orlo
- Raglan sleeves
- V-neck with twin layer border and internal elastic neck tape
- Inserts in Utility and Skin fabric
- Hemmed shirt bottom
- Manches raglan
- Col V avec double patte et bande de propreté interne élastique
- Inserts en tissu Utility et Skin
- Bas du maillot avec ourlet



35730
cyan/navy/white



05210
white/blue/navy



00410
white/navy/red



03260
maroon/black/white



00670
red/black/white



03480
navy/yellow/white



02060
navy/red/white



06640
blue/navy/white



02850
orange/black/white



00870
yellow/blue/white



09830
yellow fluo/black/white



01070
green/black/white



35770
green fluo/black/white



06450
anthracite/yellow fluo/white



02660
black/yellow/white



07780
black/anthracite/white



BOLTON
SHORT



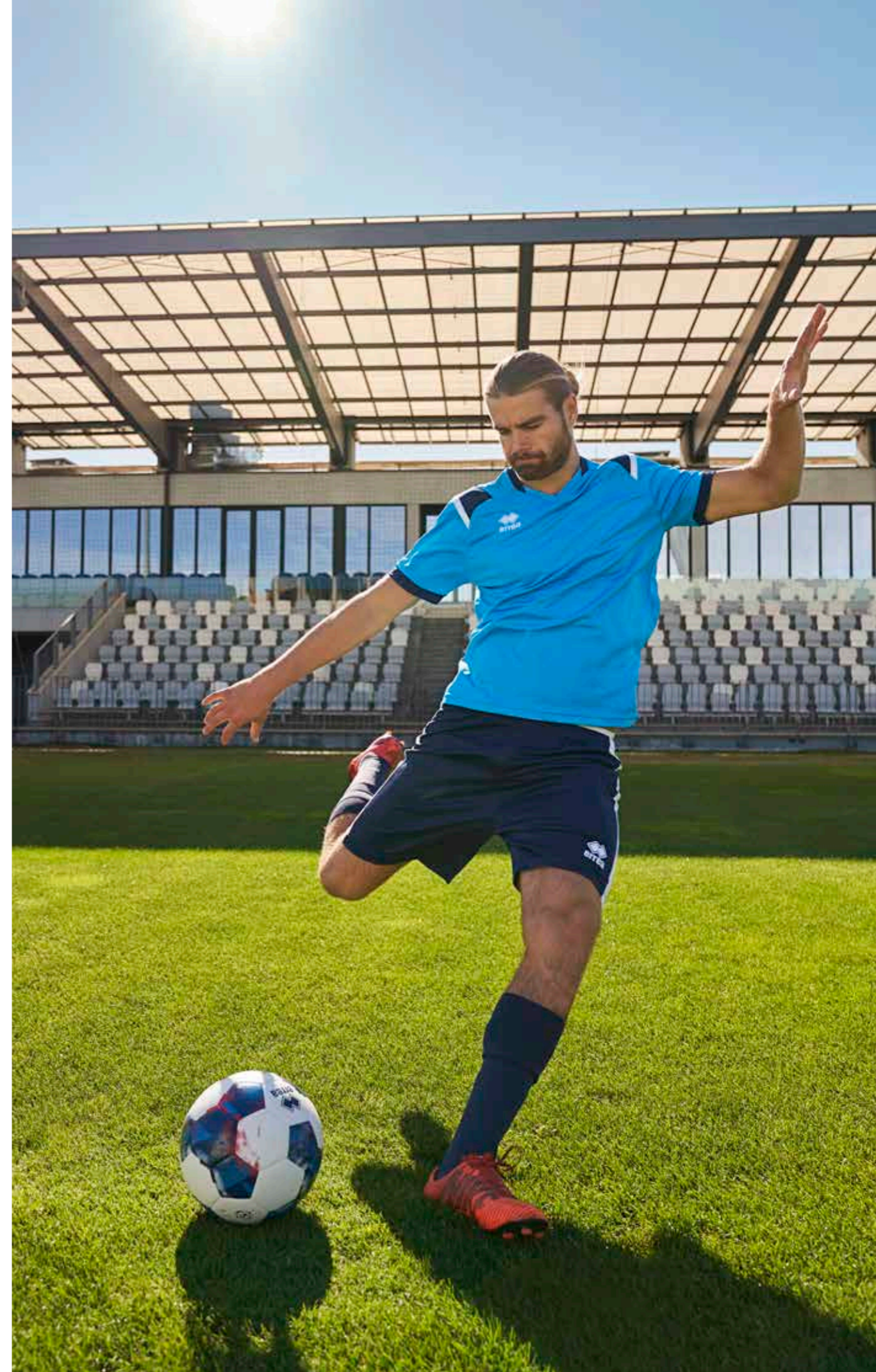
BARNEY
SHORT



EDO
SHORT



NEW SKIN
SHORT



LEX

2022



ADULT S/M/L/XL/XXL/3XL/4XL

FM820C

MUNDIAL 100% POLYESTER - 145 g/mq

UTILITY 100% POLYESTER - 145 g/mq

- Manica a raglan
- Collo a giro e parasudore interno elastico
- Cuciture ribattute a 2 aghi
- Inserti in tessuto Utility e Skin
- Fondo maglia con orlo
- Raglan sleeves
- Crew neck with internal elastic neck tape
- Reinforced stitchings
- Inserts in Utility and Skin fabric
- Hemmed shirt bottom
- Manches raglan
- Col rond avec bande de propreté interne élastique
- Coutures renforcées
- Inserts en tissu Utility et Skin
- Bas du maillot avec ourlet



00410
white/navy/red



06640
blue/navy/white



03480
navy/yellow/white



02060
navy/red/white



00670
red/black/white



01070
green/black/white



19100
white/black/anthracite



05210
white/blue/navy

LINDA WOMAN SPECIAL ORDER

- Cuciture ribattute a 2 aghi
- Reinforced stitchings
- Coutures renforcées



IT FITS LIKE
LENNY

ONLY COLOURS
LEX SHIRT

ADULT S/M/L/XL/XXL/3XL

PMJF3C

JUNIOR YXS/XXS/XS

PMJF4C

MIN. 50 PCS min. 10 per size with multiples of 2



BOLTON
SHORT

BARNEY
SHORT

CARYS 3.0
WOMAN SHORT

EDO
SHORT

NEW SKIN
SHORT



BRANDON

2025	ADULT	S/M/L/XL/XXL	GMOA0C
	JUNIOR	XXS/XS	GMOA1C

- Maglia bicolore taglia e cucì
- Manica a giro
- Girocollo
- Parasudore elastico interno
- Manica corta con orlo
- Two-colour cut and sew shirt
- Set-in sleeves
- Round neck
- Internal elastic neck tape
- Short sleeves with hem
- Maillot bicolore patchwork
- Manches montées
- Col rond
- Bande de propreté interne
- Manches courtes avec ourlet



BRENDA WOMAN SPECIAL ORDER

IT FITS LIKE LENNY CUSTOM SUBLIMATION

ADULT	S/M/L/XL/XXL	PML03C
JUNIOR	YXS/XXS/XS	PML04C

MIN. 50 PCS min. 10 per size with multiples of 2



BARNEY SHORT BONN SHORT NEW SKIN SHORT

BARNEY SHORT

2025	ADULT	S/M/L/XL/XXL	GPOA0Z
	JUNIOR	YXS/XXS/XS	GPOA1Z

- Elastico in vita con laccioli regolabili
- Inserto in contrasto sul fondo
- Elasticated waistband with adjustable drawstring
- Contrasting insert along the bottom
- Élastique à la taille et lacets réglables
- Pièce en contraste dans le bas



EVERTON

► MARION WOMAN MODEL

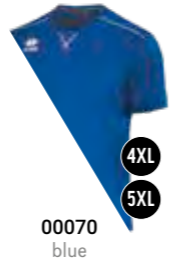
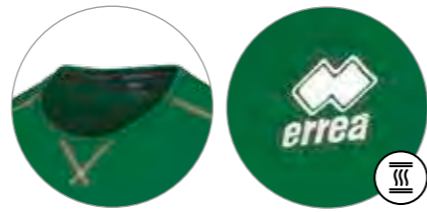
2024



ADULT	S/M/L/XL/XXL/3XL	EM1R0C
JUNIOR	YXS/XXS/XS	EM1R1C
KID	2YXS	EM1R2C

UTILITY 100% POLYESTER - 145 g/mq

- Manica a giro
- Collo a giro con parasudore interno elastico
- Cuciture con copertura a tre aghi in contrasto
- Inserti laterali per una migliore vestibilità
- Set-in sleeves
- Crew neck with internal elastic neck-tape
- Three-needle over stitching in contrasting colour
- Side panels for improved wearability
- Manche montée
- Col rond avec bande de propreté interne élastique
- Coutures avec couverture à trois aiguilles, en contraste
- Empiècements latéraux pour une meilleure ligne



EVERTON LONG SLEEVES SPECIAL ORDER

ONLY COLOURS **EVERTON** SHIRT

MIN. 16 PCS min. 4 per size with multiples of 2



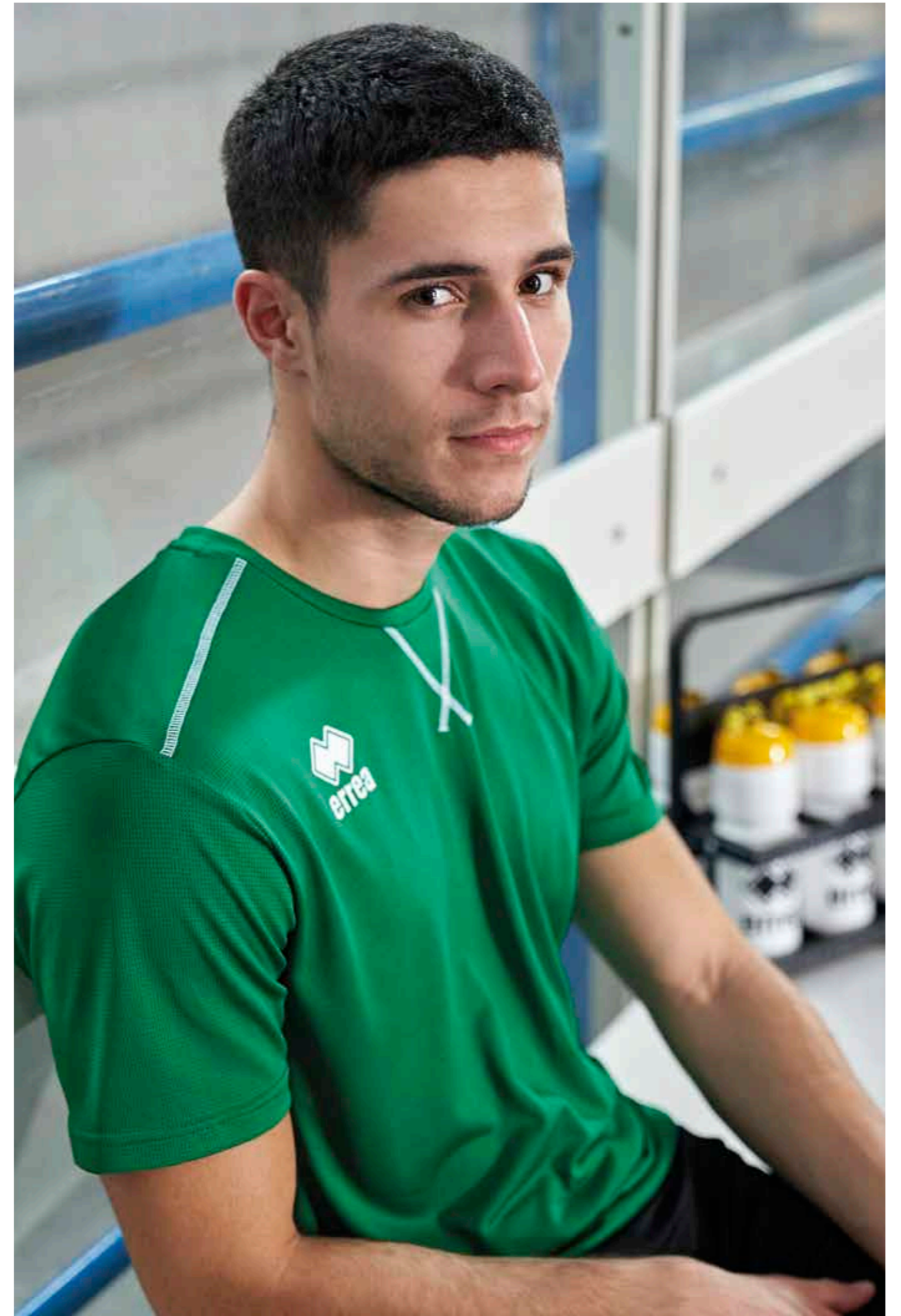
BONN
SHORT



EDO
SHORT



NEW SKIN
SHORT



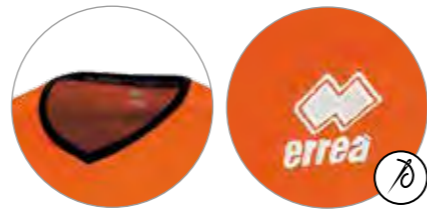
LENNOX

2024



ADULT	S/M/L/XL/XXL	SS LS	EM1U0C EM1U0L
JUNIOR	YXS/XXS/XS	SS LS	EM1U1C EM1U1L
KID	2YXS	SS LS	EM1U2C EM1U2L

SKIN 100% POLYESTER - 125 g/mq



- Manica raglan
- Collo a V con parasudore interno elastico
- Inserti laterali per una migliore vestibilità
- Raglan sleeves
- V-neck with internal elastic neck-tape
- Lateral inserts for improved wearability
- Manche raglan
- Col V avec bande de propreté interne élastique
- Inserts latérales pour une meilleure ligne



03100
maroon/white



00500
red/white



00700
yellow/white



59080
yellow fluo/white



05790
green fluo/white



02810
orange/black



00300
white/grey



01100
sky blue/white



15270
cyan/white



01500
blue/white



01900
navy/white



02900
purple/white



00900
green/white



02500
black/white



01910
navy/red



01920
navy/yellow



BONN
SHORT



NEW SKIN
SHORT



DOUG

2022



ADULT

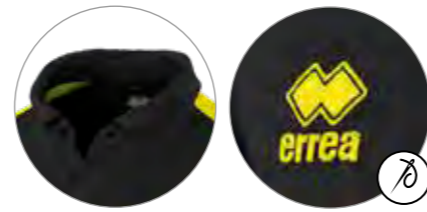
S/M/L/XL/XXL

SS
LS

FM800C
FM800L

MUNDIAL 100% POLYESTER - 145 g/mq
UTILITY 100% POLYESTER - 145 g/mq

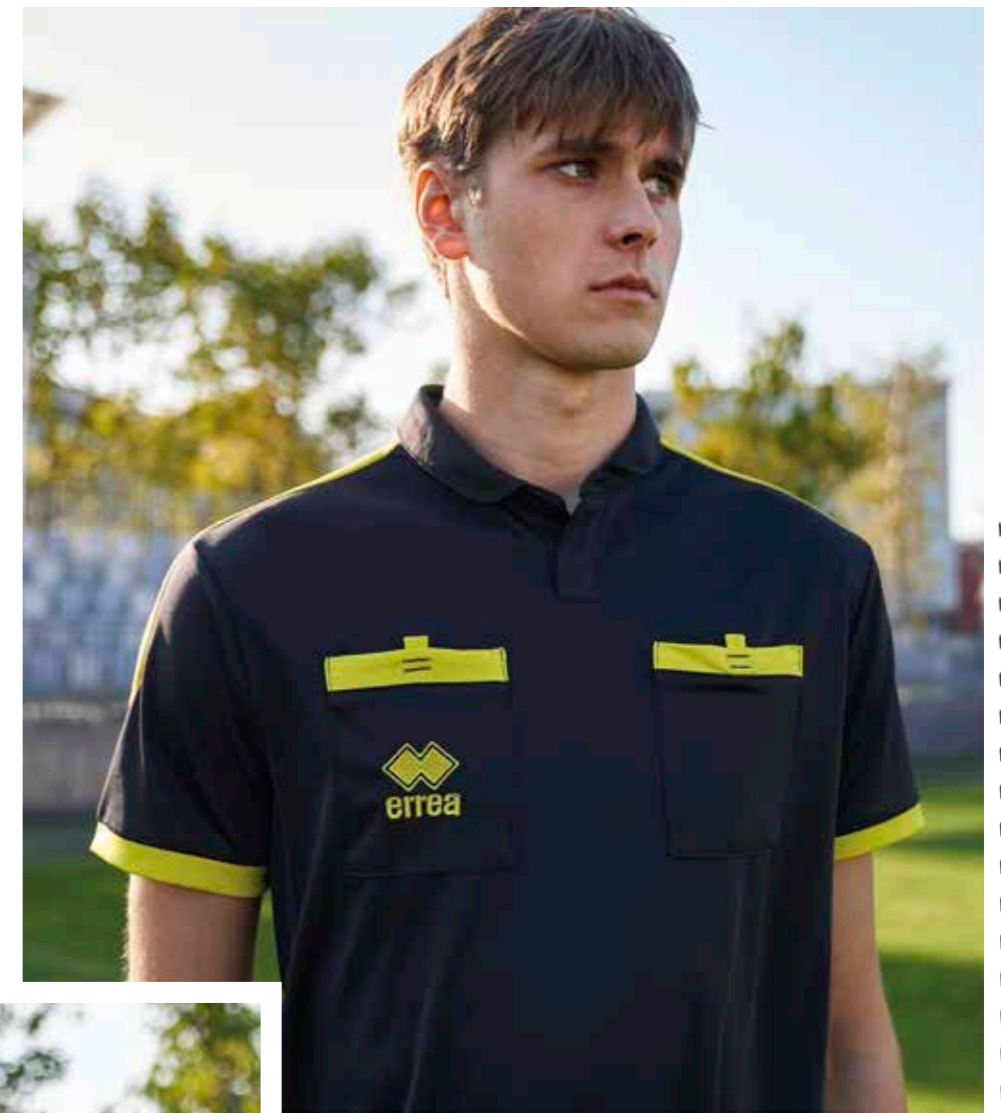
- Manica raglan
- Collo a camicia con un bottone
- Tasche anteriori con velcro
- Inserti in contrasto in tessuto su spalle, tasche e polsi
- Raglan sleeves
- Shirt-collar neck with one button
- Front pockets with Velcro
- Contrasting fabric inserts on the shoulders, pockets and cuffs
- Manches raglan
- Col chemise avec un bouton
- Poches avant avec velcro
- Inserts en contraste en tissu sur épaules, poches et poignées



07720
black/yellow fluo



59120
green fluo/black



ARBITRO

2022



ADULT

S/M/L/XL/XXL

A295

MICRORIB 100% POLYESTER - 123 g/mq

- Elastico in vita
- Laccioli regolabili
- Tasche sul retro e sui fianchi
- Elastic waistband
- Adjustable drawstring
- Pockets on back and sides
- Élastique à la taille
- Lacets réglables
- Poches arrière et sur les cotés



000012
black



BRIGIT WOMAN

► BRIAN MAN MODEL

2022



ADULT	S/M/L/XL/XXL/3XL	FM940C
JUNIOR	XS	FM941C

TECHNOSTRETCH 100% POLYESTER - 108 g/mq

- Manica a giro
- Collo a V con parasudore elastico interno
- Maniche e fondo maglia con orlo
- Inserto laterale in contrasto
- Set-in sleeves
- V-neck with internal elastic neck-tape
- Hemmed sleeves and shirt bottom
- Contrasting insert on sides
- Manches montées
- Col V avec bande de propreté interne élastique
- Manches et bas du maillot avec ourlet
- Insert latéral en contraste



00500
red/white



00010
white



00900
green/white



01500
blue/white



02500
black/white



01900
navy/white



KYARA
WOMAN SHORT

VOLLEYBALL
WOMAN SHORT

AMAZON 3.0
WOMAN SHORT

AMAZON
WOMAN SHORT

CARYS 3.0
WOMAN SHORT

EDO
SHORT

NEW SKIN
SHORT



BESSY WOMAN

2025



CUSTOM
SUBLIMATION



ADULT	S/M/L/XL/XXL/3XL	6MOD0C
JUNIOR	XXS/XS	6MOD1C

MUNDIAL 100% POLYESTER - 145 g/mq

- Manica corta a giro
- Collo a V con parasudore interno elastico
- Maglia bicolore taglia e cuci
- Set-in short sleeves
- V-neck with internal elastic neck tape
- Two-colour cut and sew shirt
- Manches courtes montées
- Col en V avec bande de propreté interne
- Maillot bicolore patchwork



01920
navy/yellow



00210
white/red



00260
white/blue



00280
white/navy



00310
white/black



00500
red/white



01500
blue/white



01900
navy/white



02500
black/white



00780
yellow/navy



01910
navy/red



00580
red/navy



22650
fuchsia fluo/black



04610
black/fuchsia fluo



KYARA WOMAN SHORT VOLLEYBALL WOMAN SHORT AMAZON 3.0 WOMAN SHORT AMAZON WOMAN SHORT CARYS 3.0 WOMAN SHORT EDO WOMAN SHORT



LENNY WOMAN

► LUCAS MAN MODEL

2022



ADULT

S/M/L/XL/XXL/3XL

FM690C

JUNIOR

YXS/XXS/XS

FM691C

MUNDIAL 100% POLYESTER - 145 g/mq

UTILITY 100% POLYESTER - 145 g/mq

- Manica a raglan
- Collo a V con doppio fintino e parasudore interno elastico
- Inserti in tessuto Utility e Skin
- Fondo maglia con orlo
- Raglan sleeves
- V-neck with double fabric border and internal elastic neck tape
- Inserts in Utility and Skin fabrics
- Hemmed shirt bottom
- Manches raglan
- Col V avec double patte et bande de propreté interne
- Inserts en tissu Utility et Skin
- Bas du maillot avec ourlet



05210
white/blue/navy



00410
white/navy/red



02060
navy/red/white



03480
navy/yellow/white



06640
blue/navy/white



00670
red/black/white



35770
green fluo/black/white



07780
black/anthracite/white



02850
orange/black/white



33290
fuchsia fluo/black/white



AMAZON 3.0
WOMAN SHORT



AMAZON
WOMAN SHORT



CARYS 3.0
WOMAN SHORT



EDO
WOMAN SHORT



NEW SKIN
SHORT



MARION WOMAN

▶ EVERTON MAN MODEL

2024



ADULT

S/M/L/XL/XXL

EM1TOC

JUNIOR

YXS/XXS/XS

EM1T1C

UTILITY 100% POLYESTER - 145 g/mq

- Manica a giro
- Collo a giro con parasudore interno elastico
- Cuciture con copertura a tre aghi in contrasto
- Fianchette laterali per una migliore vestibilità
- Set-in sleeves
- Crew neck with internal elastic neck-tape
- Three-needle over stitching in contrasting colour
- Side panels for improved wearability

- Manche montée
- Col rond avec bande de propreté interne élastique
- Coutures de couverture à trois aiguilles, en contraste
- Empiècements latéraux pour une meilleure ligne



03320
green fluo



00010
white



00030
yellow



03310
yellow fluo



03340
orange fluo



00040
green



35990
cyan



00070
blue



00090
navy



00020
red



00150
maroon



00120
black



03330
fuchsia fluo

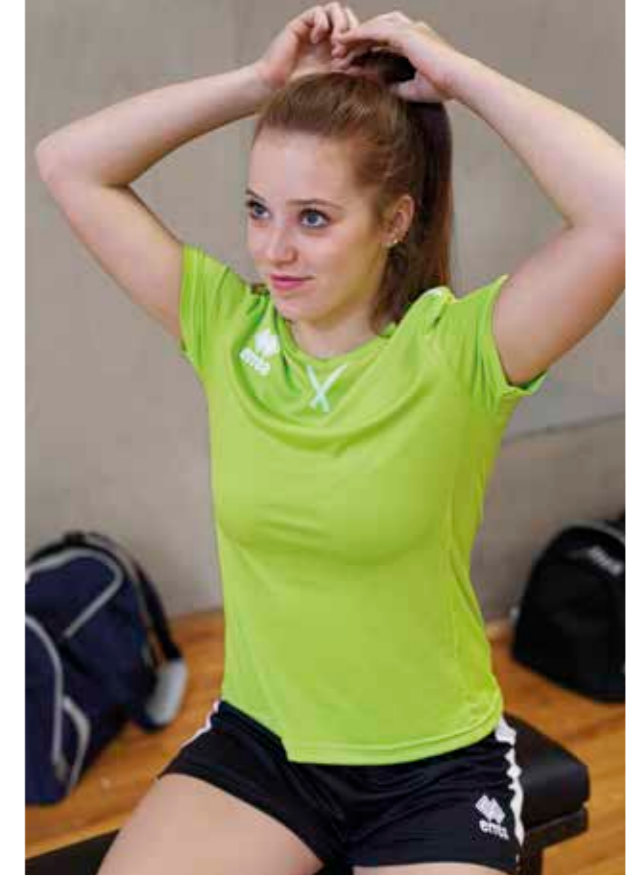
MARION LONG SLEEVES SPECIAL ORDER

ONLY COLOURS **MARION SHIRT**

MIN. 16 PCS min. 4 per size with multiples of 2



AMAZON 3.0 WOMAN SHORT AMAZON WOMAN SHORT KYARA WOMAN SHORT VOLLEYBALL WOMAN SHORT EDO WOMAN SHORT CARYS 3.0 WOMAN SHORT NEW SKIN SHORT



TRANSFER 3.0

2024		ADULT	S/M/L/XL/XXL	FP740Z
		JUNIOR	XXS/XS	FP741Z

MUNDIAL 100% POLYESTER - 145 g/mq

- Pantalo corto en transferencia
- Elástico en la vida e lacioli regolabili
- Perfil lateral en contraste
- Sublimated shorts
- Elastic waistband and adjustable drawstring
- Contrasting trim on sides



BOLTON



2024		ADULT	S/M/L/XL/XXL	D195
		JUNIOR	YXS/XXS/XS	D196

MUNDIAL 100% POLYESTER - 145 g/mq

- Elástico en la vida e lacioli regolabili
- Inserto lateral en contraste
- Elastic waistband and adjustable drawstring
- Contrasting insert on sides
- Élastique à la taille et lacets réglables
- Insert latérale en contraste



TI-MOTHY SHORT



2023		ADULT	S/M/L/XL/XXL	FPA10Z
		JUNIOR	YXS/XXS/XS	FPA11Z

TI-ENERGY 3.0 100% POLYESTER - 130 g/mq

- Filato Ti-energy antivirale e antibatterico
- Elástico en la vida con lacioli regolabili
- Inserto lateral en contraste
- Ti-energy anti-viral and anti-bacterial fabric
- Elastic waistband and adjustable drawstring
- Contrasting insert on sides
- Ti-energy tissu anti-viral et antibactérien
- Élastique à la taille et lacets réglables
- Insert latérale en contraste



EDO SHORT



2025		ADULT	S/M/L/XL/XXL	GPOB0Z
		JUNIOR	YXS/XXS/XS	GPOB1Z

MUNDIAL 100% POLYESTER - 145 g/mq

- Elástico en la vida con lacioli regolabili
- Orlo sul fondo
- Elastic waistband with adjustable drawstring
- Bottom hem
- Élastique à la taille et lacets réglables
- Ourlet dans le bas



BARNEY SHORT



2025



ADULT	S/M/L/XL/XXL	GPOAOZ
JUNIOR	YXS/XXS/XS	GPOA1Z

SKIN 100% POLYESTER - 125 g/mq

- Elastico in vita con laccioli regolabili
- Inserto in contrasto sul fondo
- Élastique à la taille et lacets réglables
- Pièce en contraste dans le bas
- Élastique à la taille et lacets réglables
- Pièce en contraste dans le bas



CARYS 3.0 WOMAN



2024



ADULT	S/M/L/XL/XXL/3XL	FP860Z
JUNIOR	XXS/XS	FP861Z

MUNDIAL 100% POLYESTER - 145 g/mq

- Elastico in vita e laccioli regolabili
- Inserto laterale in contrasto
- Elastic waistband and adjustable drawstring
- Contrasting insert on sides
- Élastique à la taille et lacets réglables
- Insert latérale en contraste



BONN



2024



ADULT	S/M/L/XL/XXL	DPOB0Z
JUNIOR	YXS/XXS/XS	DPOB1Z

SKIN 100% POLYESTER - 125 g/mq

- Elastico in vita e laccioli regolabili
- Bordino laterale in contrasto
- Elastic waistband and adjustable drawstring
- Contrasting border on sides
- Élastique à la taille et lacets réglables
- Boudin latéral en contraste



NEW SKIN



2024



ADULT	S/M/L/XL/XXL	A245
JUNIOR	YXS/XXS/XS	A246
KID	2YXS	A247

SKIN 100% POLYESTER - 125 g/mq

- Elastico in vita e laccioli regolabili
- Elastic waistband and adjustable drawstring
- Élastique à la taille et lacets réglables



BARCLAY SET

LIMITED EDITION

2022



ADULT

S/M/L/XL/XXL/3XL

GSOA0L

JUNIOR

YXS/XXS/XS

GSOA1L

MUNDIAL 100% POLYESTER - 145 g/mq

- Set in transfer senza imbottitura
- Maglia girocollo in costina con parasudore interno elastico
- Manica a giro con polsino manica lunga in costina
- Panta con elastico in vita e laccioli regolabili
- Sublimation-printed kit without padding
- Ribbed round neck shirt with internal elastic neck tape
- Set-in long sleeves with ribbed cuff
- Shorts with elasticated waistband and adjustable drawstring
- Ensemble sublimé sans rembourrage
- Maillot au col rond en bord-côte avec bande de propreté interne
- Manches longues montées avec poignets en bord-côte
- Pantalon avec élastique à la taille et lacets réglables



00120
black



00130
orange



03320
green fluo

LIMITED EDITION



DAVE SET

LIMITED EDITION

2022



ADULT	S/M/L/XL/XXL/3XL	6S0B0L
JUNIOR	YXS/XXS/XS	6S0B1L

MUNDIAL 100% POLYESTER - 145 g/mq

- Set in transfer senza imbottitura
- Maglia dal particolare collo a giro, con retro in costina
- Manica a giro con polsino manica lunga in costina
- Inserti laterali e sottomanica in contrasto in rete RP14
- Pantaloni con elastico in vita e laccioli regolabili
- Inserto in contrasto sul fondo e sui fianchi in rete RP14
- Sublimation-printed kit without padding
- Shirt with distinct crew neck, ribbed at the back
- Set-in long sleeves with ribbed cuff
- Contrasting side inserts and under sleeve in RP14 mesh
- Shorts with elasticated waistband and adjustable drawstring
- Contrasting inserts along the bottom and down the sides in RP14 mesh
- Ensemble sublimé sans rembourrage
- Maillot au col rond particulier avec dos en bord-côte
- Manches longues montées avec poignets en bord-côte
- Pièces latérales et dessous de bras en contraste en mesh RP14
- Pantalon avec élastique à la taille et lacets réglables
- Pièce en contraste dans le bas et sur les côtés en mesh RP14

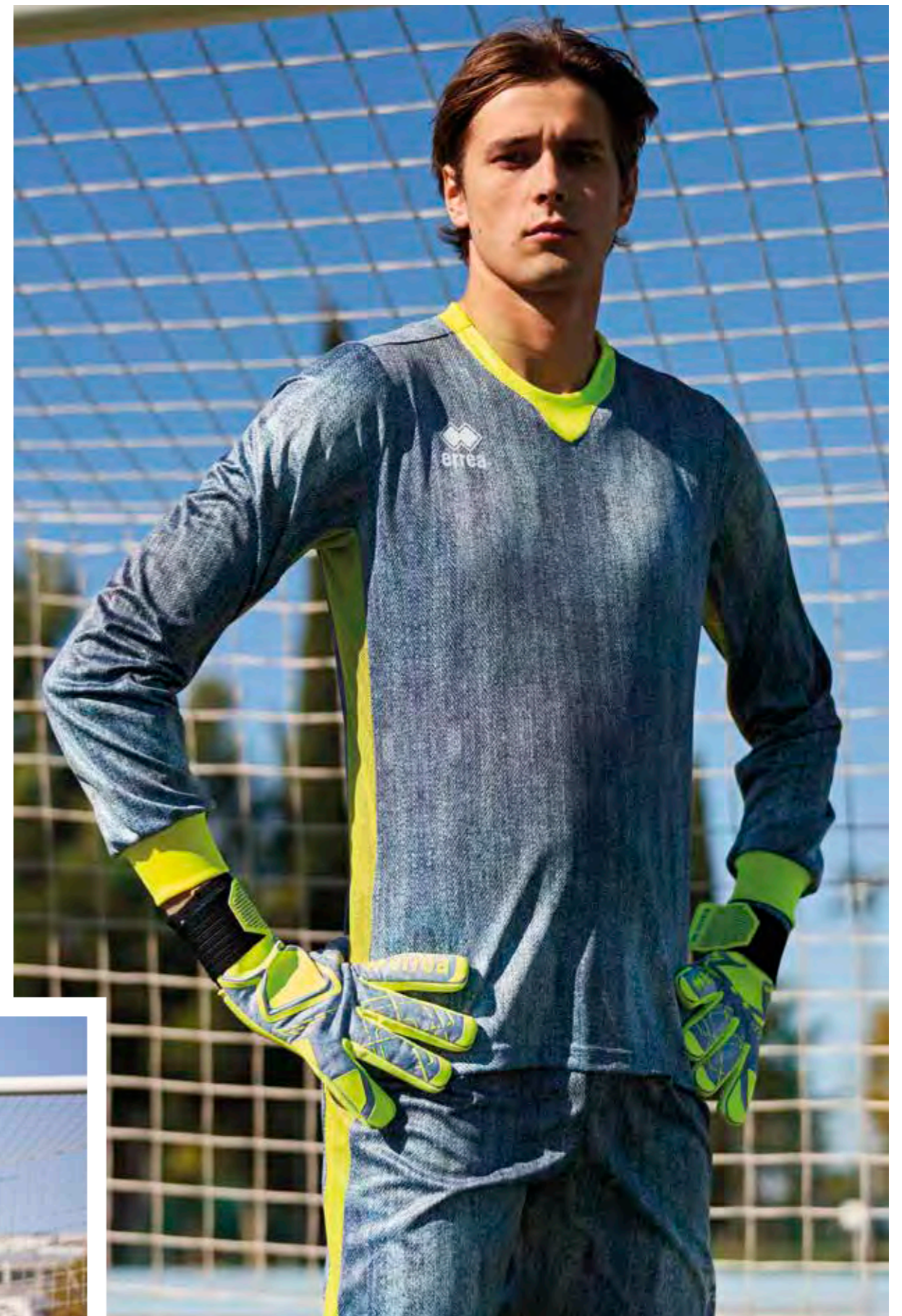


68060
jeans/white



71600
jeans/yellow fluo

LIMITED EDITION



ACRIS SET

2022



ADULT

S/M/L/XL/XXL/3XL

FS0H0L

JUNIOR

YXS/XXS/XS

FS0H1L

MUNDIAL 100% POLYESTER - 145 g/mq

- Set in transfer senza imbottitura
- Maglia con collo a giro e parasudore interno elastico
- Manica raglan con polsino smacchinato
- Elastico in vita e laccioli regolabili
- Sublimated set without padding
- Crew neck shirt with internal elastic neck tape
- Raglan sleeve with knitted cuff
- Elastic waistband and adjustable drawstring
- Set sublimé sans rembourrage
- Col rond avec bande de propreté interne élastique
- Manches raglan avec bord en tricot plat
- Élastique à la taille et lacets réglables



45790
black/after eight



00620
red/orange



20660
dark green/green fluo



BAHIA

2023



ADULT	S/M/L/XL/XXL/3XL	6MOE0L
JUNIOR	YXS/XXS/XS	6MOE1L

MUNDIAL 100% POLYESTER - 145 g/mq
SKIN 100% POLYESTER - 125 g/mq

- Manica a giro
- girocollo in costina con parasudore interno elastico
- Polsino manica lunga in costina
- Maglia bicolore taglia e cucì
- Junior: manica con imbottitura
- Set-in sleeves
- Ribbed neckband with internal elastic neck tape
- Long sleeves with ribbed cuff
- Two-colour cut and sew shirt
- Junior: sleeves with padding
- Manches montées
- Col rond en bord-côte avec bande de propreté interne
- Manches longues avec poignets en bord-côte
- Maillot bicolore patchwork
- Junior: manches avec rembourrage

PADDING ONLY JUNIOR



04930
orange fluo/black



04920
yellow fluo/black



59120
green fluo/black



01010
green/black



35710
cyan/black



00120
black



PITCH
TROUSERS

IMPACT
SHORT



HYDRON TROUSERS



2024



ADULT S/M/L/XL/XXL EPOAOZ

100% POLYESTER - 172 g/mq

- Imbottitura sui fianchi e sul ginocchio
- Fondo costina elasticizzata
- Elastico in vita e laccioli regolabili
- Resistenti ad acqua e vento
- Padding on sides and knees
- Hem with elasticated ribbing
- Elastic waistband and adjustable drawstring
- Water and wind resistant
- Rembourrage sur hanches et genoux
- Bas du pantalon à côtes fines élastiques
- Élastique à la taille et lacets réglables
- Résistant à l'eau et au vent



000012
black

PHANTHOM 3/4 TROUSERS



2022



ADULT S/M/L/XL/XXL EP1DOZ

90% NYLON 10% ELASTIC - 200 g/mq

- 3/4 con imbottitura sui fianchi
- Cuciture in contrasto
- Elastico in vita e laccioli regolabili
- 3/4 trousers with padding on sides
- Stitching in contrasting colour
- Elastic waistband and adjustable drawstring
- 3/4 avec rembourrage sur les hanches
- Coutures en contraste
- Élastique à la taille et Lacets réglables



02600
black/grey

Fino ad esaurimento scorte
While stocks last
Jusqu'à épuisement du stock

STOPPER 3/4 TROUSERS



2024



ADULT S/M/L/XL/XXL C345

JUNIOR XS C346

100% POLYESTER - 260 g/mq

- 3/4 con imbottitura sui fianchi e sul ginocchio
- Elastico in vita e laccioli regolabili
- 3/4 with padding on sides and knees
- Elastic waistband and adjustable drawstring
- 3/4 avec rembourrage sur hanches et genoux
- Élastique à la taille et lacets réglables



000012
black

PITCH TROUSERS



2024



ADULT S/M/L/XL/XXL C305

JUNIOR 32/34/36/38/40 C306

100% POLYESTER - 280 g/mq

- Imbottitura sui fianchi
- Elastico in vita e laccioli regolabili
- Padding on sides
- Elastic waistband and adjustable drawstring
- Rembourrage sur les hanches
- Élastique à la taille et lacets réglables



000012
black

CAYMAN



2024



ADULT S/M/L/XL/XXL/3XL B335

JUNIOR XS B336

100% NEOPRENE/EVA - 300 g/mq

- Realizzati in Neoprene con imbottitura sui fianchi in EVA
- Elastico in vita e laccioli regolabili
- Neoprene shorts with EVA padding on sides
- Elastic waistband and adjustable drawstring
- Short réalisé en néoprène avec rembourrage en EVA sur les hanches
- Élastique à la taille et lacets réglables



000012
black

CAYMAN LIGHT



2024



ADULT S/M/L/XL/XXL/3XL EP1COZ

JUNIOR XS EP1C1Z

90% NYLON 10% ELASTIC - 200 g/mq

- Imbottitura sui fianchi in EVA
- Cuciture in contrasto
- Elastico in vita e laccioli regolabili
- Shorts with padding in EVA on sides
- Stitching in contrasting colour
- Elastic waistband and adjustable drawstring
- Short avec rembourrage en EVA sur les hanches
- Coutures en contraste
- Élastique à la taille et lacets réglables



02600
black/grey

IMPACT



2024



ADULT S/M/L/XL/XXL C335

JUNIOR YXS/XXS/XS C336

SKIN 100% POLYESTER - 125 g/mq

- Imbottitura sui fianchi
- Elastico in vita e laccioli regolabili
- Padding on sides
- Elastic waistband and adjustable drawstring
- Rembourrage sur les hanches
- Élastique à la taille et lacets réglables



000012
black

ZERO THE ICON JEANS EDITION

2022

ADULT 8 / 8,5 / 9 / 9,5 / 10 / 10,5 / 11

GA1D0Z

JUNIOR 4 / 5 / 6 / 6,5 / 7 / 7,5 / 8

GA1D1Z

- Cuciture negative
- Inserti in mesh
- Lattice giga grip/giga grip fluo/ lattice 4 mm
- Dorso in neoprene light
- Close fitting bandage
- Negative seams
- Mesh inserts
- Giga grip/ fluo giga grip/latex 4 mm
- Neoprene light backhand
- Close fitting bandage
- Coutures intérieures
- Inserts en mesh
- Giga grip/giga grip fluo/latex 4 mm
- Dos en néoprène light
- Close fitting bandage



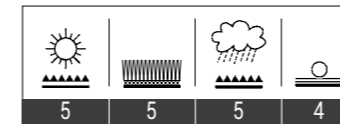
68060
jeans/white



71600
jeans/yellow fluo

Consigliato per la gara e allenamento.
Recommended for Match and training.
Conseillé pour la compétition e l'entraînement.

GRIP PERFORMANCE



IMPACT
ABSORPTION
PERFORMANCE

JUNIOR VERSION



68060
jeans/white



71600
jeans/yellow fluo

ZERO THE ICON

2022	ADULT	8 / 8,5 / 9 / 9,5 / 10 / 10,5 / 11	FA210Z
	JUNIOR	4 / 5 / 6 / 6,5 / 7 / 7,5 / 8	FA211Z

CONSIGLIATO PER LA GARA E ALLENAMENTO

- Cuciture negative
- Inserti in mesh
- Lattice giga grip/giga grip fluo/superlow 4 mm
- Dorso in neoprene light
- Close fitting bandage

RECOMMENDED FOR MATCH AND TRAINING

- Negative seams
- Mesh inserts
- Giga grip/fluo giga grip/superlow latex 4 mm
- Neoprene light backhand
- Close fitting bandage

CONSEILLÉ POUR LA COMPÉTITION E L'ENTRAÎNEMENT

- Coutures intérieures
- Inserts en mesh
- Giga grip/giga grip fluo/superlow latex 4 mm
- Dos en néoprène light
- Close fitting bandage



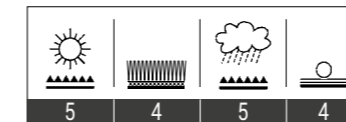
11390
white/green fluo



00810
yellow/black

Consigliato per la gara.
Recommended for Match.
Conseillé pour la compétition.

GRIP PERFORMANCE



IMPACT
ABSORPTION
PERFORMANCE

JUNIOR VERSION



11390
white/green fluo



00810
yellow/black



ZERO RETRÒ

2022

ADULT 8 / 8,5 / 9 / 9,5 / 10 / 10,5 / 11

GA0Y0Z

- Cuciture tradizionali
- Inserti in mesh
- Lattice soft latex 4 mm
- Dorso in lattice soft 4 mm
- Wrist stabilization system
- Struttura ergonomica

- Traditional seams
- Mesh inserts
- Soft latex 4 mm
- Backhand soft latex 4 mm
- Wrist stabilization system
- Ergonomic construction

- Coutures plates
- Inserts en textile mesh
- Latex soft latex 4 mm
- Dos en mousse soft 4mm
- Wrist stabilization system
- Structure ergonomique



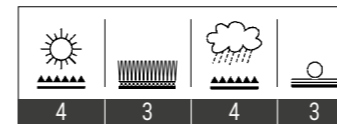
00310
white/black



02500
black/white

Consigliato per la gara e allenamento.
Recommended for Match and training.
Conseillé pour la compétition e l'entraînement.

GRIP PERFORMANCE



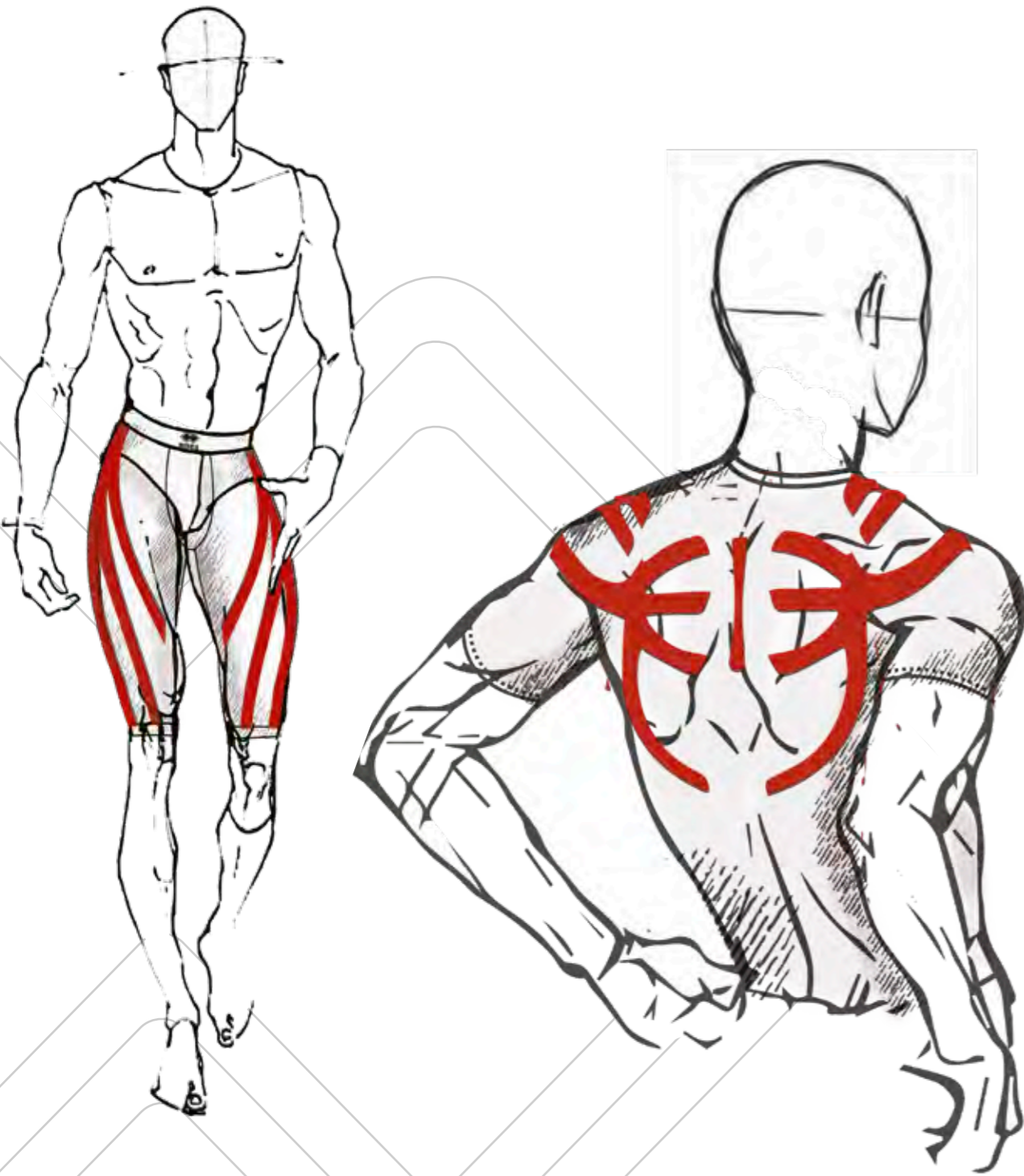
IMPACT
ABSORPTION
PERFORMANCE



LINE
BASE LAYER

DESIGN BY
ERREÀ GRAPHIC DPT

2022
COLLECTION



FABRICS:

*Polyamide
Elastan*

Errea
BASE LAYER

TECNOLOGIA IN AZIONE

Dopo più di 3 anni di ricerche, decine di prototipi progettati e oltre 100 test approfonditi eseguiti da atleti professionisti di oltre 30 sport in gara e allenamento, Erreà Sport® presenta Active Tense®. Progettata grazie alla collaborazione di osteopati, fisioterapisti e atleti professionisti, ACTIVE TENSE® è l'esclusiva e unica linea di abbigliamento dotata di un esoscheletro flessibile interno a ogni capo. Active Tense® è ispirato al concetto di taping e della chinesioterapia e studiato con lo scopo di garantire un'ineguagliabile stabilizzazione delle articolazioni e dei muscoli durante l'attività fisica. Il disegno unico biodinamico di Active Tense® e la sua speciale costruzione ergonomica brevettata assicurano una perfetta aderenza al corpo seguendone i movimenti naturali. La speciale costruzione a superfici differenziate consente, inoltre, una rapida dispersione del sudore insieme a una ventilazione efficace in grado di mantenere il corpo asciutto per offrire il massimo comfort. Active Tense® è 100% Made in Italy e certificato OEKO-TEX® Standard 100 per garantire i massimi standard di sicurezza e qualità.

TECHNOLOGY IN ACTION

Following more than 3 years of research, dozens of prototypes and over 100 tests carried out by sporting professionals in more than 30 different disciplines in competitions and training, Erreà Sport® presents Active Tense®. Designed in collaboration with osteopaths, physiotherapists and professional athletes, ACTIVE TENSE® is the only line of sportswear to feature a flexible exoskeleton embedded in each garment. Active Tense® was inspired by kinesiology taping to provide exceptional joint and muscle stabilization during exercise. The unique biodynamic design of Active Tense® with its one-of-a-kind patented ergonomic design ensure the perfect fit while accompanying the body's natural movements. The use of multiple surfaces ensures rapid sweat dispersion and effective ventilation to keep the body dry and comfortable. Active Tense® is 100% Made in Italy and OEKO-TEX® Standard 100 certified to guarantee the highest safety and quality standards.

TECHNOLOGIE EN ACTION

Après plus de 3 ans de recherches, des dizaines de prototypes et plus de 100 tests approfondis exécutés par des athlètes professionnels de plus de 30 sports, pendant les compétitions et les entraînements, Erreà Sport® présente Active Tense®. Mise au point avec la coopération d'ostéopathes, physiothérapeutes et athlètes professionnels, ACTIVE TENSE® est une ligne de vêtements exclusive et unique dotée d'un exosquelette flexible inséré à l'intérieur de chaque vêtement. Active Tense® s'inspire du concept de « taping » et de la kinésiothérapie et a été conçue dans le but d'assurer une incomparable stabilisation des articulations et des muscles pendant l'activité sportive. L'exclusif dessin biodynamique d'Active Tense® et sa spéciale construction ergonomique brevetée assurent une adhérence parfaite au corps en accompagnant ses mouvements naturels. La construction spéciale à surfaces différenciées permet en outre une dispersion rapide de la sueur ainsi qu'une ventilation efficace pouvant maintenir le corps sec pour offrir le confort maximum. Active Tense® est 100% Made in Italy et certifié OEKO-TEX® Standard 100 pour assurer les niveaux maximums en termes de sécurité et qualité.

COME FUNZIONA

L'esoscheletro interno dei capi Active Tense® supporta i movimenti naturali del corpo, migliorando la postura senza limitare la libertà di movimento con un effetto stabilizzante sia attivo che passivo.

STABILIZZAZIONE ATTIVA

La stabilizzazione attiva è un supporto graduale ai muscoli e alle articolazioni che serve a migliorare i movimenti naturali del corpo, mantenendoli nel giusto binario ed evitando movimenti potenzialmente scorretti e dannosi.

STABILIZZAZIONE PASSIVA

La stabilizzazione passiva agisce da guida funzionale, suggerendo al corpo come mantenere una postura più appropriata e coadiuvando muscoli ed articolazioni a mantenere un adeguato allineamento.

Active Tense® aiuta, inoltre, a ridurre le vibrazioni a cui sono sottoposti i muscoli e, quindi, l'affaticamento durante e dopo lo sforzo fisico, e a migliorare la propriocezione, ovvero la capacità di percepire e riconoscere la posizione del corpo nello spazio, sensibilità fondamentale per il controllo del movimento. Grazie all'elevato sostegno articolare e muscolare, e la conseguente riduzione dello stress corporeo, Active Tense® può anche promuovere un più rapido recupero post-infortunio.

HOW DOES IT WORK

The embedded exoskeleton in Active Tense® garments supports the body's natural movements by improving posture without inhibiting freedom of movement through a combination of active and passive stabilization.

ACTIVE STABILIZATION

Active stabilization offers graded muscle and joint support aimed at enhancing the body's natural movements, keeping them on the right path and eliminating movements that are wrong or unnatural.

PASSIVE STABILIZATION

Passive stabilization is a functional guide that encourages the body to adopt an appropriate posture and helps muscles and joints to stay properly aligned. Active Tense® reduces muscle vibration and therefore fatigue during and after exercise while improving proprioceptivity, the capacity to perceive and recognize the position of the body in space, a crucial aspect of movement control. Thanks to its exceptional levels of support for joints and muscles and the resulting reduction of stress for the body, Active Tense® also ensures improved post-injury recovery times.

COMMENT CELA FONCTIONNE

L'exosquelette interne des vêtements Active Tense® accompagne les mouvements naturels du corps, améliorant la posture sans limiter la liberté de mouvement avec un effet de stabilisation actif et passif.

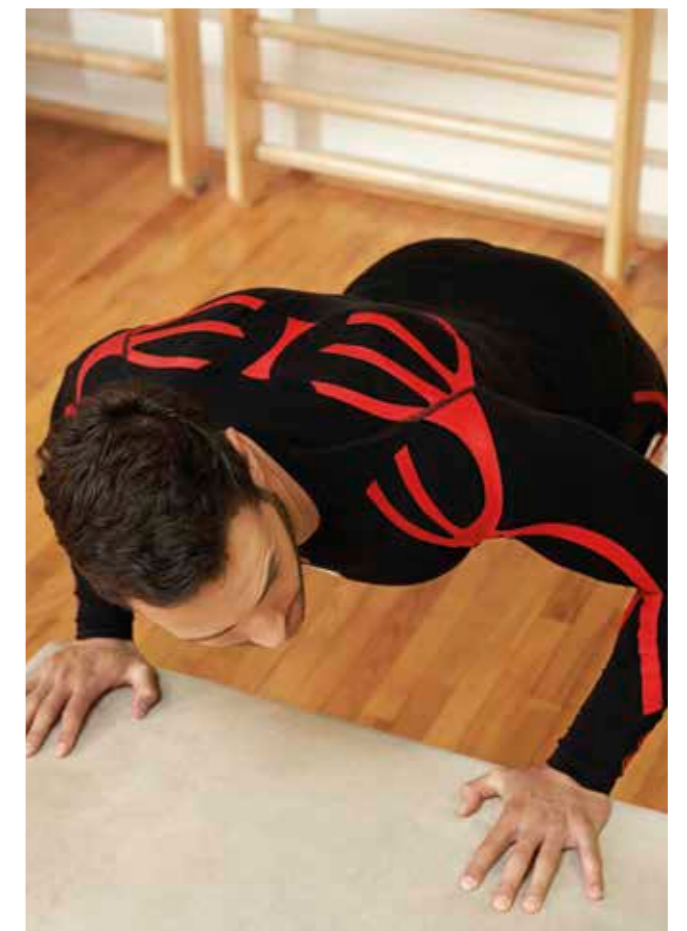
STABILISATION ACTIVE

La stabilisation active offre un soutien graduel des muscles et des articulations servant à améliorer les mouvements naturels du corps, tout en les maintenant dans la position correcte et évitant des mouvements potentiellement erronés et dangereux.

STABILISATION PASSIVE

La stabilisation passive agit comme un guide fonctionnel, aidant le corps à maintenir une posture plus appropriée et permettant aux muscles et aux articulations de maintenir un alignement correct.

Active Tense® aide en outre à limiter les vibrations auxquelles les muscles sont sujets et, par conséquent, la fatigue pendant et après l'effort physique ainsi qu'à améliorer leur proprioception, soit la capacité de percevoir et reconnaître la position du corps dans l'espace, ce qui est fondamental pour le contrôle du mouvement. Grâce à l'excellent soutien articulaire et musculaire et à la limitation conséquente du stress corporel, Active Tense® pourrait aussi promouvoir une récupération plus rapide après un accident.



MIZAR

ACTIVE
TENS

2024		MADE IN ITALY	OEKO-TEX® STANDARD 100 CERTIFIED	ADULT	S/M/L/XL/XXL	U700L
				JUNIOR	XS	U701L

91% POLYAMIDE 9% ELASTAN



003708
white/cyan



002510
black/red



000772
black/yellow fluo

Fino ad esaurimento scorte
While stocks last
Jusqu'à épuisement du stock

- Collo a giro progettata per migliorare postura e rendimento
- Esoscheletro a supporto posturale
- Supporto mirato per i muscoli della parte alta della schiena, articolazioni delle spalle e cuffie dei rotatori
- Supporto extra per gomiti e muscoli delle braccia
- Fasce elastiche interne a sostegno del deltoide, tricipite e trapezio
- Riduzione della vibrazione muscolare
- Traspirante
- Inserimento di fibre di Elastan di alta qualità per mantenere sempre la forma dell'indumento
- Tessuto elastico senza cuciture

- Long-sleeve shirt scientifically engineered to improve posture and performance
- Exoskeleton for postural support.
- Targeted support for the muscles in the upper part of the back, shoulders and rotator cuffs.
- Extra support for elbows and arm muscles.
- Inner elastic bands to support the deltoid, triceps and trapezoid muscles.
- Reduction of muscular vibration
- Breathable
- Insertion of high quality Elasthane fibres for permanent maintenance of the garment's shape
- Seamless elastic fabric

- Maillot à manches longues avec col rond conçu pour améliorer la posture et le rendement
- Exosquelette pour soutien postural
- Soutien ciblé pour les muscles de la partie haute du dos, les articulations des épaules et la coiffe des rotateurs
- Soutien extra pour les coudes et les muscles des bras
- Bandes élastiques internes de soutien du deltoïde, du triceps et du trapèze
- Réduction des vibrations musculaires
- Respirant
- Introduction de fibres Elastan de haute qualité pour toujours maintenir la forme du vêtement.
- Tissu élastique sans coutures

SAIPH

ACTIVE
TENS

2024		MADE IN ITALY	OEKO-TEX® STANDARD 100 CERTIFIED	ADULT	S/M/L/XL/XXL	U700
				JUNIOR	XS	U701

91% POLYAMIDE 9% ELASTAN



002510
black/red



003708
white/cyan



000772
black/yellow fluo

Fino ad esaurimento scorte
While stocks last
Jusqu'à épuisement du stock

- Collo a giro progettata per migliorare postura e rendimento
- Esoscheletro a supporto posturale
- Supporto mirato per i muscoli della parte alta della schiena, articolazioni delle spalle e cuffie dei rotatori
- Supporto extra per gomiti e muscoli delle braccia
- Fasce elastiche interne a sostegno del deltoide, tricipite e trapezio
- Riduzione della vibrazione muscolare
- Traspirante
- Inserimento di fibre di Elastan di alta qualità per mantenere sempre la forma dell'indumento
- Tessuto elastico senza cuciture

- Short-sleeve shirt with crew neck designed to improve posture and performance.
- Exoskeleton for postural support.
- Targeted support for the muscles in the upper part of the back, shoulders and rotator cuffs.
- Extra support for elbows and arm muscles.
- Inner elastic bands to support the deltoid, triceps and trapezoid muscles.
- Reduction of muscular vibration
- Breathable
- Insertion of high quality Elasthane fibres for permanent maintenance of the garment's shape
- Seamless elastic fabric

- Maillot à manches courtes avec col rond conçu pour améliorer la posture et le rendement
- Exosquelette pour soutien postural
- Soutien ciblé pour les muscles de la partie haute du dos, les articulations des épaules et la coiffe des rotateurs.
- Soutien extra pour les coudes et les muscles des bras
- Bandes élastiques internes de soutien du deltoïde, du triceps et du trapèze
- Réduction des vibrations musculaires
- Respirant
- Introduction de fibres Elastan de haute qualité pour toujours maintenir la forme du vêtement.
- Tissu élastique sans coutures

CALEYO

ACTIVE
TENS

2024		MADE IN ITALY	OEKO-TEX® STANDARD 100 CERTIFIED	ADULT	S/M/L/XL/XXL	U708
				JUNIOR	XS	U709

91% POLYAMIDE 9% ELASTAN



003708
white/cyan



000772
black/yellow fluo

Fino ad esaurimento scorte
While stocks last
Jusqu'à épuisement du stock

- 3/4 che aiuta l'allineamento posturale di fianchi, cosce e dell'articolazione rotulea
- Esoscheletro altamente flessibile
- Supporto mirato per fianchi e ginocchia
- Traspiranti
- Inserimento di fibre di Elastan di alta qualità per mantenere sempre la forma dell'indumento
- Tessuto elastico senza cuciture

- 3/4 trousers that assist the postural training of hips, thighs and patellar articulation
- Highly flexible exoskeleton
- Targeted supports for hips and knees
- Breathable
- Insertion of high quality Elasthane fibres for permanent maintenance of the garment's shape
- Seamless elastic fabric

- Pantalon 3/4 qui aide l'alignement postural des hanches, des cuisses et de l'articulation rotulienne
- Exosquelette très flexible
- Support ciblé pour hanches et genoux
- Respirant
- Introduction de fibres Elastan de haute qualité pour toujours maintenir la forme du vêtement.
- Tissu élastique sans coutures

ARRIUS

ACTIVE
TENS

2024		MADE IN ITALY	OEKO-TEX® STANDARD 100 CERTIFIED	ADULT	S/M/L/XL/XXL	U705
				JUNIOR	XS	U706

91% POLYAMIDE 9% ELASTAN



003708
white/cyan



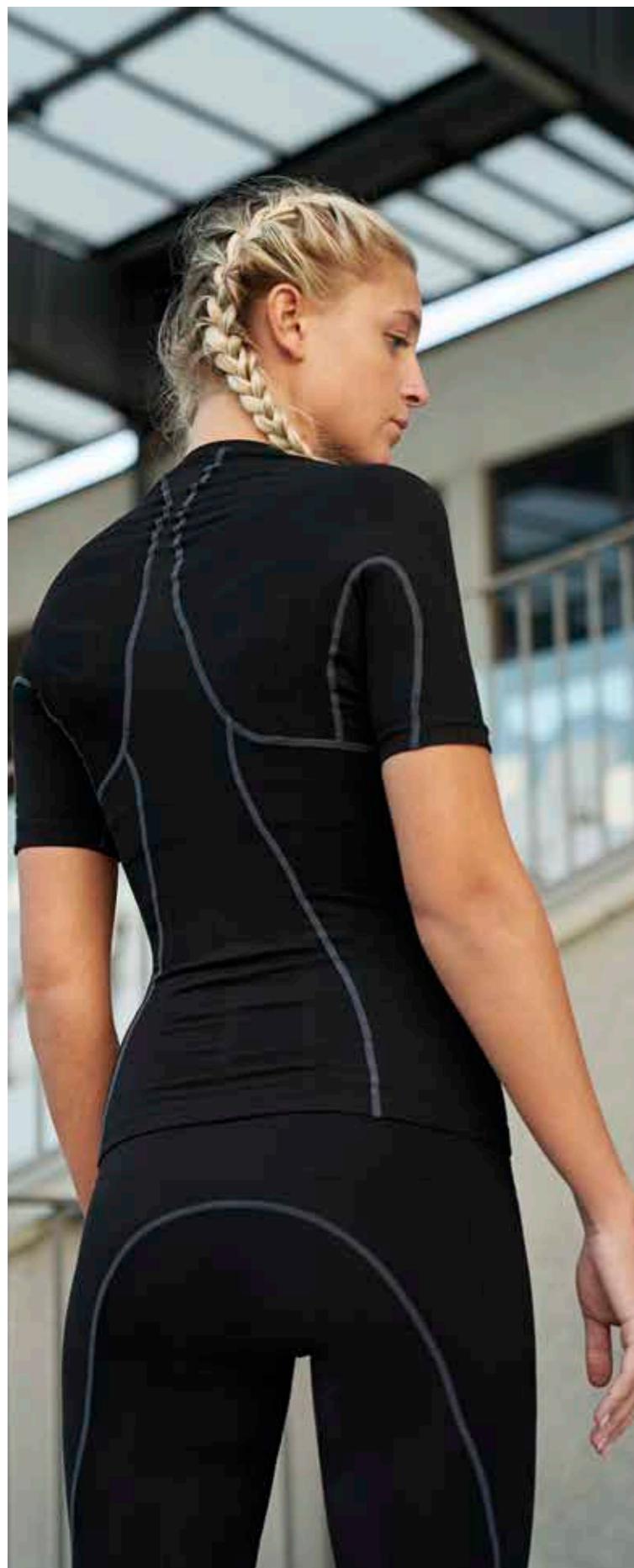
000772
black/yellow fluo

Fino ad esaurimento scorte
While stocks last
Jusqu'à épuisement du stock

- Progettato per sostenere quadricipiti, flessori e glutei
- Esoscheletro a supporto posturale.
- Ridotta vibrazione muscolare
- Traspiranti
- Inserimento di fibre di Elastan di alta qualità per mantenere la forma dell'indumento
- Tessuto elastico senza cuciture

- Targeted support for quadriceps, flexors and glutes.
- Exoskeleton for postural support.
- Reduced muscular vibration.
- Breathable.
- Insertion of high quality Elasthane fibres for permanent maintenance of the garment's shape
- Seamless elastic fabric

- Soutien ciblé pour quadriceps, fléchisseurs et fesses
- Exosquelette de soutien postural.
- Vibrations musculaires réduites
- Respirant
- Introduction de fibres Elastan de haute qualité pour toujours maintenir la forme du vêtement.
- Tissu élastique sans coutures



ACTIVE TENSE® LITE

Dopo oltre due anni di ricerca, Erreà® presenta il nuovo Active Tense® Lite.

Gli innovativi capi della linea AT Lite si rivolgono a chi non vuole rinunciare al supporto ergonomico posturale di Active Tense® nella vita quotidiana. Il tessuto estremamente leggero, il design ton su ton e il collo a "V" della maglia rendono i capi AT Lite eleganti, comodi e confortevoli, ideali per essere indossati in qualunque momento della giornata. Allo stesso tempo, l'esoscheletro termosaldato e la costruzione del capo in zone a tensione differenziata offrono un sostegno efficace ad articolazioni e gruppi muscolari contribuendo a migliorare la performance e favorendo il recupero nel dopo gara, allenamento o post-infortunio.

ACTIVE TENSE® LITE

Following more than two years of research, Erreà® presents the new Active Tense® Lite.

The innovative AT Lite apparel is designed for those who want the ergonomic posture support of Active Tense® also in their daily lives. The ultralight fabric, single-colour, "V" neck design of the shirts make AT Lite garments elegant and comfortable, and ideally suited for use at any time during the day. In addition, the heatwelded exoskeleton and the differentiated fitting point construction of the garment provide effective support to joints and muscle groups for improved performance and recovery-rates after competitions, training and injuries.

ACTIVE TENSE® LITE

Après plus de deux ans de recherches, Erreà® présente le nouvel Active Tense® Lite.

Les vêtements innovants de la ligne AT Lite ont été conçus pour ceux qui ne peuvent pas se passer du soutien ergonomique postural d'Active Tense® dans leur activités quotidiennes. Le tissu extrêmement léger, le design ton sur ton et le col en V de ce maillot rendent les vêtements AT Lite élégants, pratiques et confortables, idéaux pour être portés dans toutes les occasions et à tout moment de la journée. En même temps, l'exosquelette thermo-soudé et la structure du vêtement en zones à tension différenciée offrent un soutien efficace aux articulations et aux groupes musculaires permettant d'améliorer la performance et favorisant la récupération après la compétition, l'entraînement ou un accident.

2024		MADE IN ITALY	OEKO-TEX® CONFIDENCE IN TEXTILES STANDARD 100 074744.0 CENTROCOT Tested for harmful substances. www.oeko-tex.com/standard100	ADULT	S/M/L/XL/XXL	UMO10C
				JUNIOR	XS	UMO11C

94% POLYAMIDE 6% ELASTAN



- Maglia collo a giro, dotata di zone a tensione differenziata ed esoscheletro in resina
- L'esoscheletro in resina si concentra sulla parte superiore del corpo con lo scopo di stabilizzare le spalle e migliorare la postura
- Le fasce elastiche interne sono studiate e realizzate per sostenere il deltoide e il trapezio
- Le zone a tensione differenziata grazie ai diversi attriti determinano effetti stabilizzatori sui muscoli e sulle articolazioni

- Short-sleeve shirt crew neck with differentiated tension zones and exoskeleton in resin
- The resin exoskeleton is positioned and concentrated on the upper part of the body for the purpose of stabilizing the shoulders and improving posture
- The inner elastic bands are designed and produced to support the deltoid and trapezoid muscles
- The differentiated tension zones, because of different frictions, have stabilizing effects on the muscles and joints

- Maillot col rond à manches courtes avec des zones à tension différenciée et un exosquelette en résine
- L'exosquelette en résine est positionné et se concentre sur la partie supérieure du corps dans le but de stabiliser les épaules et d'améliorer la posture
- Les bandes élastiques internes ont été étudiées et réalisées pour soutenir le deltoïde et le trapèze
- Les zones à tension différenciée grâce aux différents frottements déterminent des effets stabilisateurs sur les muscles et sur les articulations

2024		MADE IN ITALY	OEKO-TEX® CONFIDENCE IN TEXTILES STANDARD 100 074744.0 CENTROCOT Tested for harmful substances. www.oeko-tex.com/standard100	ADULT	S/M/L/XL/XXL	UPO60Z
				JUNIOR	XS	UPO61Z

94% POLYAMIDE 6% ELASTAN



- Dotato di zone a tensione differenziata ed esoscheletro in resina
- L'esoscheletro in resina si concentra sui principali muscoli della coscia per migliorarne la funzionalità
- Le fasce elastiche interne sono realizzate per sostenere i quadricipiti e i flessori e creano un importante supporto alle fasce e alla muscolatura degli adduttori
- La vibrazione muscolare risulta sensibilmente ridotta

- Bermudas with differentiated tension zones and exoskeleton in resin
- The resin exoskeleton is concentrated on the main muscles of the thigh to improve their function
- The inner elastic bands are provided to support the quadriceps and flexors, and create an important support to the muscle fibres of the adductors
- Muscular vibration is noticeably reduced

- Bermuda avec des zones à tension différenciée et un exosquelette en résine.
- L'exosquelette en résine se concentre sur les principaux muscles de la cuisse pour en améliorer la fonctionnalité.
- Les bandes élastiques internes, réalisées pour soutenir les quadriceps et les fléchisseurs, créent un important soutien aux bandes et à la musculature des adducteurs.
- Les vibrations musculaires sont sensiblement réduites



DARYL



2024



ADULT

S/M - L/XL - XXL

UMOB0L

JUNIOR

XXS - XS

UMOB1L

85% POLYAMIDE 10% POLYESTER 5% ELASTANE

- Manica a giro
- Collo a lupetto
- Inserti tridimensionali localizzati nella parte superiore
- Alta traspirabilità
- Rapido assorbimento del sudore
- Effetto "second skin"
- Tecnologia Seamless
- Isolamento termico
- Estrema leggerezza
- Taschino posteriore porta GPS
- Made in Italy

- Set-in sleeves
- Turtleneck
- Three-dimensional inserts on upper portion
- Optimum breathability
- Rapid sweat absorption
- "Second skin" effect
- Seamless technology
- Thermal insulation
- Extreme lightness
- Back pocket for GPS
- Made in Italy

- Manches montées
- Col montant
- Pièces tridimensionnelles situées dans la partie supérieure
- Grande respirabilité
- Absorption rapide de la transpiration
- Effet « deuxième peau »
- Technologie sans coutures
- Isolation thermique
- Légèreté extrême
- Petite poche arrière porte-GPS
- Made in Italy



00120
black



00020
red



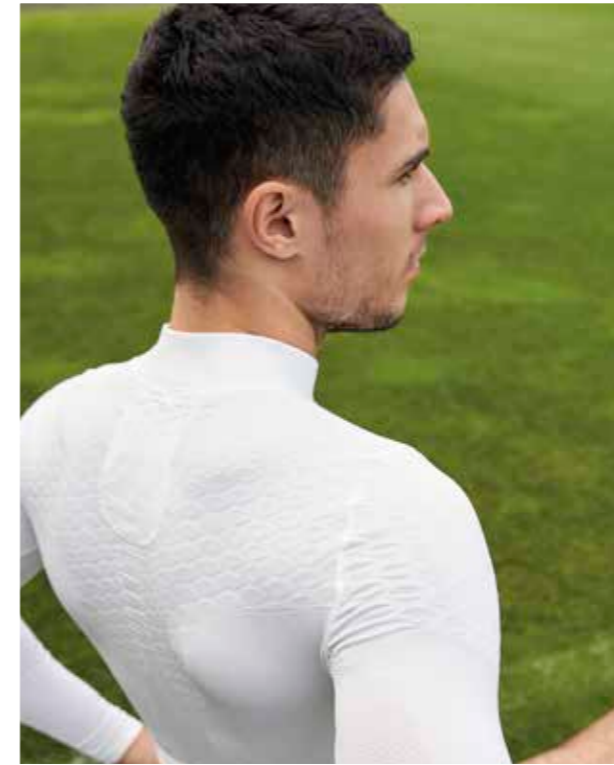
00010
white



00090
navy



00070
blue



DAVOR



2024



ADULT

S/M - L/XL - XXL

UMOC0L

JUNIOR

XXS - XS

UMOC1L

85% POLYAMIDE 10% POLYESTER 5% ELASTANE

- Manica e collo a giro
- Inserti tridimensionali localizzati nella parte superiore per mantenere il corpo asciutto e caldo
- Alta traspirabilità
- Rapido assorbimento del sudore
- Effetto "second skin"
- Tecnologia Seamless
- Isolamento termico
- Estrema leggerezza
- Taschino posteriore porta GPS
- Made in Italy

- Set-in sleeves and crew neck
- Three-dimensional inserts on upper portion
- Optimum breathability
- Rapid sweat absorption
- "Second skin" effect
- Seamless technology
- Thermal insulation
- Extreme lightness
- Back pocket for GPS
- Made in Italy

- Manches montées et col rond
- Pièces tridimensionnelles situées dans la partie supérieure
- Grande respirabilité
- Absorption rapide de la transpiration
- Effet « deuxième peau »
- Technologie sans coutures
- Isolation thermique
- Extrême légèreté
- Petite poche arrière porte-GPS
- Made in Italy



00090
navy



00020
red



00010
white



00120
black



00040
green



00130
orange



00150
maroon



00070
blue



00030
yellow



00060
fuchsia



DAVID



2024



ADULT

S/M - L/XL - XXL

UMOD0C

JUNIOR

XS

UMOD1C

85% POLYAMIDE 10% POLYESTER 5% ELASTANE

- Manica e collo a giro
- Inserti tridimensionali localizzati nella parte superiore per mantenere il corpo asciutto e caldo
- Alta traspirabilità
- Rapido assorbimento del sudore
- Effetto "second skin"
- Tecnologia Seamless
- Isolamento termico
- Estrema leggerezza
- Taschino posteriore porta GPS
- Made in Italy
- Set-in sleeves and crew neck
- Three-dimensional inserts on upper portion
- Optimum breathability
- Rapid sweat absorption
- "Second skin" effect
- Seamless technology
- Thermal insulation
- Extreme lightness
- Back pocket for GPS
- Made in Italy
- Manches montées et col rond
- Pièces tridimensionnelles situées dans la partie supérieure
- Grande respirabilité
- Absorption rapide de la transpiration
- Effet « deuxième peau »
- Technologie sans coutures
- Isolation thermique
- Extrême légèreté
- Petite poche arrière porte-GPS
- Made in Italy



00120
black



00020
red



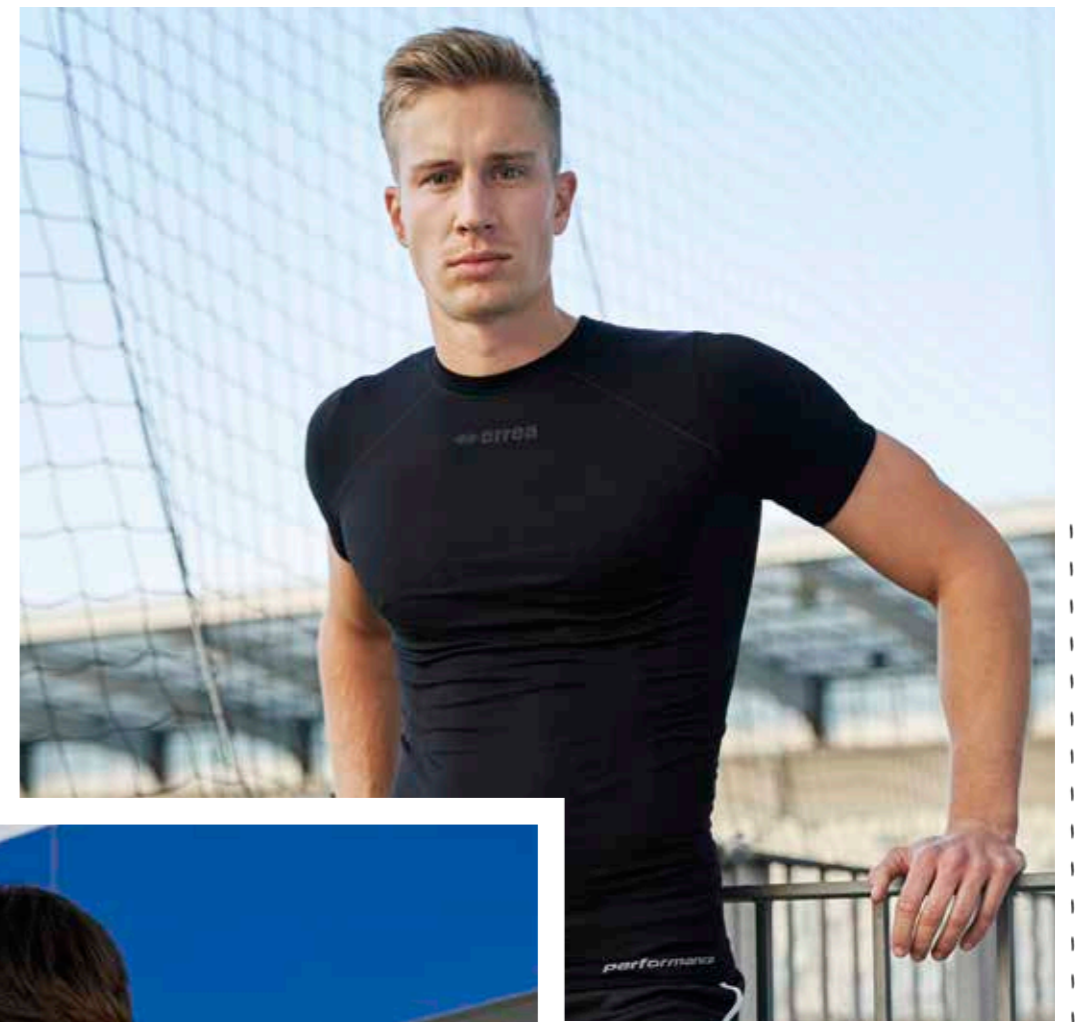
00010
white



00090
navy



00070
blue



ENYA



2024



ADULT

S/M - L/XL - XXL

UMOF0Z

JUNIOR

XS

UMOF1Z

85% POLYAMIDE 15% POLYESTER

- Collo a giro
- Alta traspirabilità
- Rapido assorbimento e dispersione del sudore
- Effetto "second skin"
- Tecnologia Seamless
- Ideale regolazione termica corporea
- Estrema leggerezza
- Taschino posteriore porta GPS
- Made in Italy
- Crew neck
- Optimum breathability
- Rapid absorption and elimination of sweat
- "Second skin" effect
- Seamless technology
- Ideal body temperature regulation
- Extreme lightness
- Back pocket for GPS
- Made in Italy
- Col rond
- Grande respirabilità
- Absorption rapide et dispersion de la transpiration
- Effet « deuxième peau »
- Technologie sans coutures
- Régulation thermique corporelle idéale
- Extrême légèreté
- Petite poche arrière porte-GPS
- Made in Italy



00120
black



00010
white



00090
navy



DARIS

2024



ADULT	S/M - L/XL - XXL/3XL	FMOB0L
JUNIOR	YXS - XXS/XS	FMOB1L

90% POLYESTER 10% ELASTANE

- Manica raglan
- Collo a giro
- Ideale per il periodo invernale
- Isolamento termico
- Raglan sleeve
- Crew neck
- Ideal for wintertime
- Thermal insulation
- Manches raglan
- Ras du cou
- Idéal pour la période hivernale
- Isolation thermique



DAWE

2024



ADULT	S/M - L/XL - XXL/3XL	FPOB0Z
JUNIOR	YXS - XXS/XS	FPOB1Z

90% POLYESTER 10% ELASTANE

- Elasticizzati
- Elastico in vita
- Elasticated
- Elastic waistband
- Elasticité
- Ceinture élastique



LANA COTONE

2024



ADULT	M/L/XL	A3010
JUNIOR	XS	A3011

46% POLYESTER 46% COTTON 5% NYLON

Package of 5 pieces for size.

- Manica a giro
- Collo a giro
- Isolamento termico
- Mantiene il corpo asciutto e caldo
- Set-in sleeves
- Crew neck
- Thermal insulation
- It keep the body warm and dry
- Manches montées
- Col rond
- Isolation thermique
- Il garde le corps sec et chaud



DENIS



2024



ADULT

S/M - L/XL - XXL

UPOB0Z

JUNIOR

XS

UPOB1Z

85% POLYAMIDE 10% POLYESTER 5% ELASTANE

- Alta traspirabilità
- Rapido assorbimento del sudore
- Effetto "second skin"
- Tecnologia seamless
- Isolamento termico
- Estrema leggerezza
- Made in Italy

- Optimum breathability
- Rapid sweat absorption
- "Second skin" effect
- Seamless technology
- Thermal insulation
- Extreme lightness
- Made in Italy

- Grande respirabilità
- Absorption rapide de la transpiration
- Effet « deuxième peau »
- Technologie sans coutures
- Isolation thermique
- Extrême légèreté
- Made in Italy



00090 navy



00020 red

00010 white

00120 black

00070 blue

00150 maroon

00130 orange

00030 yellow

00040 green

DAMIAN



2024



ADULT

S/M - L/XL - XXL

UPOC0Z

JUNIOR

YXS - XXS - XS

UPOC1Z

85% POLYAMIDE 10% POLYESTER 5% ELASTANE

- Alta traspirabilità
- Rapido assorbimento del sudore
- Effetto "second skin"
- Tecnologia seamless
- Isolamento termico
- Estrema leggerezza
- Made in Italy

- Optimum breathability
- Rapid sweat absorption
- "Second skin" effect
- Seamless technology
- Thermal insulation
- Extreme lightness
- Made in Italy

- Grande respirabilità
- Absorption rapide de la transpiration
- Effet « deuxième peau »
- Technologie sans coutures
- Isolation thermique
- Extrême légèreté
- Made in Italy



00090 navy



00120 black

Errea
ACCESSORIES

BIB

Package of 10 piece for size

2024 	ADULT	A980
	JUNIOR	A981
	KID	A982

100% POLYESTER - 120 g/mq

- Collo a giro profondo e sbracci ampi
- Wide crew neck and armholes
- Col rond profond et emmanches amples



000333
fuchsia fluo



000002
red



000334
orange fluo



000331
yellow fluo



000332
green fluo



000008
royal



BIB DOUBLE

Package of 10 piece for size

2024 	ADULT	M/XL	C990
	JUNIOR	XS	C991

100% POLYESTER - 120 g/mq

- Collo a giro profondo e sbracci ampi
- Wide crew neck and armholes
- Col rond profond et emmanches amples
- Double
- Doubleface
- Double face



001810
orange fluo/yellow fluo



000026
white/blue



000028
white/navy



000050
red/white



POLYESTERE

2024 	ADULT	A410
	JUNIOR	A411
	KID	A412

70% POLYESTER 15% COTTON 10% NYLON 5% ELASTANE

- Altezza ginocchio
- Kneesocks
- Chaussettes hauteur genou



000009
navy



000001
white



000015
maroon



000002
red



000013
orange



000003
yellow



000331
yellow fluo



000007
blue



003599
cyan



000005
sky blue



000332
green fluo



000004
green



000016
dark green



27710
after eight



000008
royal



000012
black



000018
anthracite



000011
grey



000478
pink



000014
purple



ALF

2022 	ADULT	FA1U0Z
--	-------	--------

74% POLYESTER 24% POLYAMIDE 2% ELASTANE

- Altezza ginocchio
- Lavorazione in gomma sul piede per garantire maggior grip e migliorare il contatto con l'intersuola
- Mantiene il piede fermo nella scarpa ed evita lo scivolamento
- Kneesocks
- Rubber on the foot to ensure better grip and improve contact with the sole
- Holds the foot firm in the shoe and prevents slipping
- Chaussettes hauteur genou
- Coussinets en caoutchouc sur le pied pour assurer une meilleure accroche et un meilleur contact avec l'intersemelle
- Empêche le pied de bouger dans la chaussure et évite de glisser



00090
navy



00010
white



00150
maroon



00020
red



00030
yellow



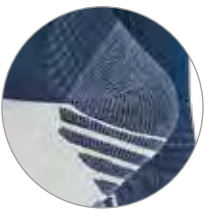
00040
green



00070
blue



00120
black



TRANSPIR

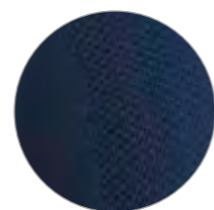
2024



ADULT	A405
JUNIOR	A406

80% NYLON 15% COTTON 5% ELASTANE

- Altezza ginocchio
- Estremamente traspirante
- Microfori sul polpaccio
- Kneesocks
- Highly breathable
- Micro-holes on calf
- Chaussettes hauteur genou
- Extrêmement respirantes
- Microtrous sur le mollet



000009
navy



000001 white
000015 maroon
000002 red
000013 orange
000004 green
000007 blue
000003 yellow
000012 black

ZONE

2024

ADULT	A400Z
JUNIOR	A401Z
KID	A402Z

75% POLYESTER 15% COTTON 7% NYLON 3% ELASTANE

- Altezza ginocchio
- Kneesocks
- Chaussettes hauteur genou



000196
navy/blue



000250 black/white
000050 red/white
000052 red/yellow
000152 blue/yellow
000191 navy/red
000150 blue/white
000151 blue/red
000190 navy/white
000192 navy/yellow
000090 green/white
000098 green/navy
000252 black/yellow
000251 black/red

COMMANDER

2023

50% EVA 45% POLYESTER 5% ELASTAN
95% POLYESTER 5% ELASTAN

ADULT	FA2K0Z
JUNIOR	FA2K1Z

- CONSIGLIATO PER LA GARA
- Struttura in EVA termo formata
 - Conforme alle normative CE
 - Design multistrato a mappatura corporea per ottimizzare la deflessione durante l'impatto
 - **High Frequency Technology** nella parte superiore per distribuire e disperdere l'energia degli impatti
- RECOMMENDED FOR MATCH
- Structure of EVA heat-moulded foam
 - Compliant with CE regulations
 - Multi-layer, body-mapped design to optimise impact deflection without compromising on comfort during use
 - **High Frequency Technology** to the top layer helps distribute and disperse the energy of impact
- CONSEILLÉ POUR LA COMPÉTITION.
- Structure en EVA thermoformée
 - Conforme à la réglementation CE
 - plusieurs couches à cartographie corporelle afin d'optimiser la déviation lors de l'impact sans toutefois porter préjudice à son confort d'utilisation
 - **High Frequency Technology**, la couche supérieure contribue à répartir et à disperser l'énergie des chocs reçus



71570
jeans/royal/white



19540
black/green fluo/white

TAKLE ID

2023

30%K-RESIN 30% EVA 10% SPANDEX
5% NYLON 15% RUBBER

ADULT	GA1B0Z
JUNIOR	GA1B1Z
KID	GA1B2Z

- CONSIGLIATO PER LA GARA
- Conforme alle normative CE impatti
- RECOMMENDED FOR MATCH
- Compliant with CE regulations
- CONSEILLÉ POUR LA COMPÉTITION.
- Conforme à la réglementation CE



71620
yellow fluo/royal/navy



35670
white/cyan/black

OSAKI 3.0 SOCKS

2024

95% POLYESTER 5% ELASTAN

SIZES	ONE SIZE	FA1L0Z
-------	----------	--------



02500
black/white



00270
white/royal