

# BRIGIT WOMAN

► BRIAN MAN MODEL

2022



ADULT

S/M/L/XL/XXL/3XL

FM940C

JUNIOR

XS

FM941C

TECHNOSTRETCH 100% POLYESTER - 108 g/mq

- Manica a giro
- Collo a V con parasudore elastico interno
- Maniche e fondo maglia con orlo
- Inserto laterale in contrasto

- Set-in sleeves
- V-neck with internal elastic neck-tape
- Hemmed sleeves and shirt bottom
- Contrasting insert on sides

- Manches montées
- Col V avec bande de propreté interne élastique
- Manches et bas du maillot avec ourlet
- Insert latéral en contraste



00500  
red/white



00010  
white



01500  
blue/white



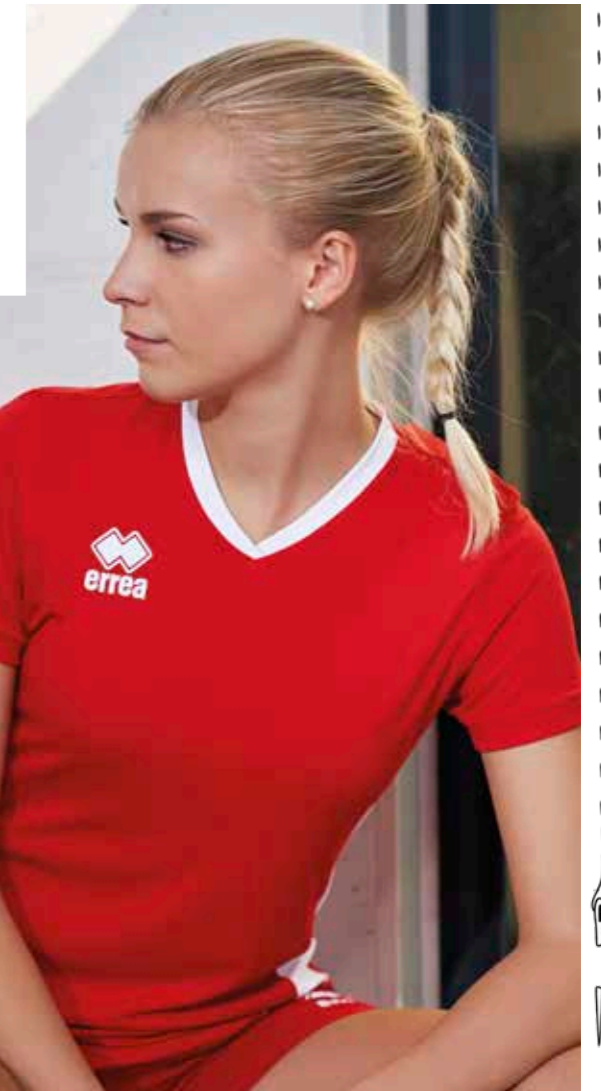
01900  
navy/white



00900  
green/white



02500  
black/white



KYARA

WOMAN SHORT

VOLLEYBALL

WOMAN SHORT

AMAZON 3.0

WOMAN SHORT

AMAZON

WOMAN SHORT

CARYS 3.0

WOMAN SHORT

EDO

SHORT

NEW SKIN

SHORT

# BESSY WOMAN

2025



CUSTOM  
SUBLIMATION

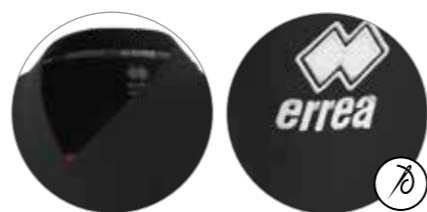


ADULT S/M/L/XL/XXL/3XL  
JUNIOR XXS/XS

GMOD0C  
GMOD1C

MUNDIAL 100% POLYESTER - 145 g/mq

- Maglia bicolore taglia e cuci
- Manica corta a giro
- Collo a V con parasudore interno elastico
- Two-colour cut and sew shirt
- Set-in short sleeves
- V-neck with internal elastic neck tape
- Maillot bicolore patchwork
- Manches courtes montées
- Col en V avec bande de propreté interne



22650  
fuchsia fluo/black



00210  
white/red



00260  
white/blue



00280  
white/navy



00310  
white/black



00500  
red/white



01500  
blue/white



01900  
navy/white



02500  
black/white



04610  
black/fuchsia fluo



01910  
navy/red



00580  
red/navy



01920  
navy/yellow



00780  
yellow/navy



KYARA  
WOMAN SHORT

VOLLEYBALL  
WOMAN SHORT

AMAZON 3.0  
WOMAN SHORT

AMAZON  
WOMAN SHORT

CARYS 3.0  
WOMAN SHORT

EDO  
WOMAN SHORT



# LENNY WOMAN

► LUCAS MAN MODEL

2022



ADULT

S/M/L/XL/XXL/3XL

FM690C

JUNIOR

YXS/XXS/XS

FM691C

MUNDIAL 100% POLYESTER - 145 g/mq

UTILITY 100% POLYESTER - 145 g/mq

- Manica a raglan
- Collo a V con doppio fintino e parasudore interno elastico
- Inserti in tessuto Utility e Skin
- Fondo maglia con orlo
- Raglan sleeves
- V-neck with double fabric border and internal elastic neck tape
- Inserts in Utility and Skin fabrics
- Hemmed shirt bottom
- Manches raglan
- Col V avec double patte et bande de propreté interne
- Inserts en tissu Utility et Skin
- Bas du maillot avec ourlet



05210  
white/blue/navy



00410  
white/navy/red



02060  
navy/red/white



03480  
navy/yellow/white



06640  
blue/navy/white



00670  
red/black/white



35770  
green fluo/black/white



07780  
black/anthracite/white



02850  
orange/black/white



33290  
fuchsia fluo/black/white



AMAZON 3.0  
WOMAN SHORT



AMAZON  
WOMAN SHORT



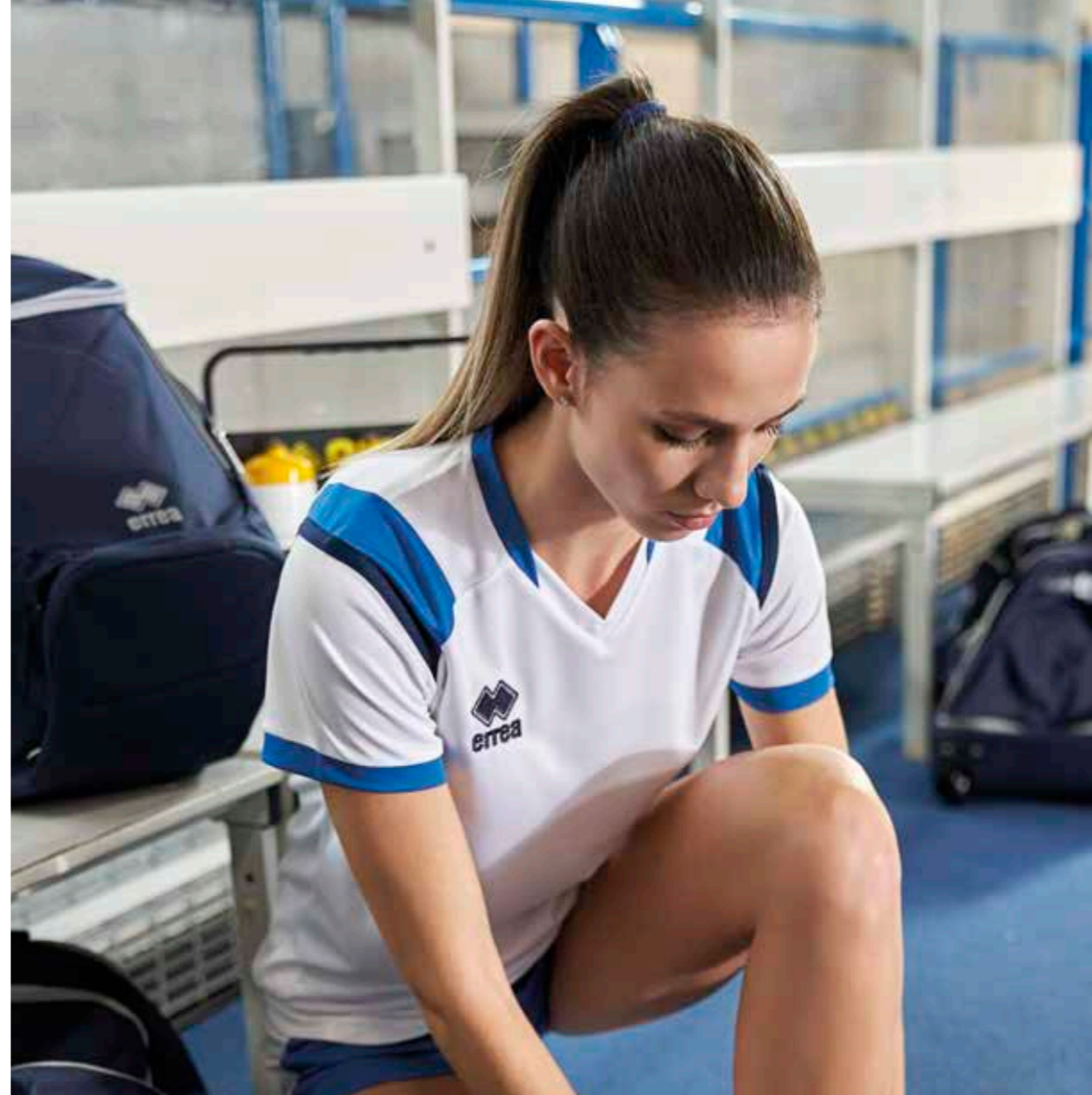
CARYS 3.0  
WOMAN SHORT



EDO  
WOMAN SHORT



NEW SKIN  
SHORT



# MARION WOMAN

▶ EVERTON MAN MODEL

2024



ADULT

S/M/L/XL/XXL

EM1TOC

JUNIOR

YXS/XXS/XS

EM1T1C

UTILITY 100% POLYESTER - 145 g/mq

- Manica a giro
- Collo a giro con parasudore interno elastico
- Cuciture con copertura a tre aghi in contrasto
- Fianchette laterali per una migliore vestibilità
- Set-in sleeves
- Crew neck with internal elastic neck-tape
- Three-needle overstitching in contrasting colour
- Side panels for improved wearability

- Manche montée
- Col rond avec bande de propreté interne élastique
- Coutures de couverture à trois aiguilles, en contraste
- Empiècements latéraux pour une meilleure ligne



**03320**  
green fluo



**00010**  
white



**00030**  
yellow



**03310**  
yellow fluo



**03340**  
orange fluo



**00040**  
green



**35990**  
cyan



**00070**  
blue



**00090**  
navy



**00020**  
red



**00150**  
maroon



**00120**  
black



**03330**  
fuchsia fluo

## MARION LONG SLEEVES SPECIAL ORDER

ONLY COLOURS **MARION SHIRT**

MIN. 16 PCS min. 4 per size with multiples of 2



AMAZON 3.0  
WOMAN SHORT

AMAZON  
WOMAN SHORT

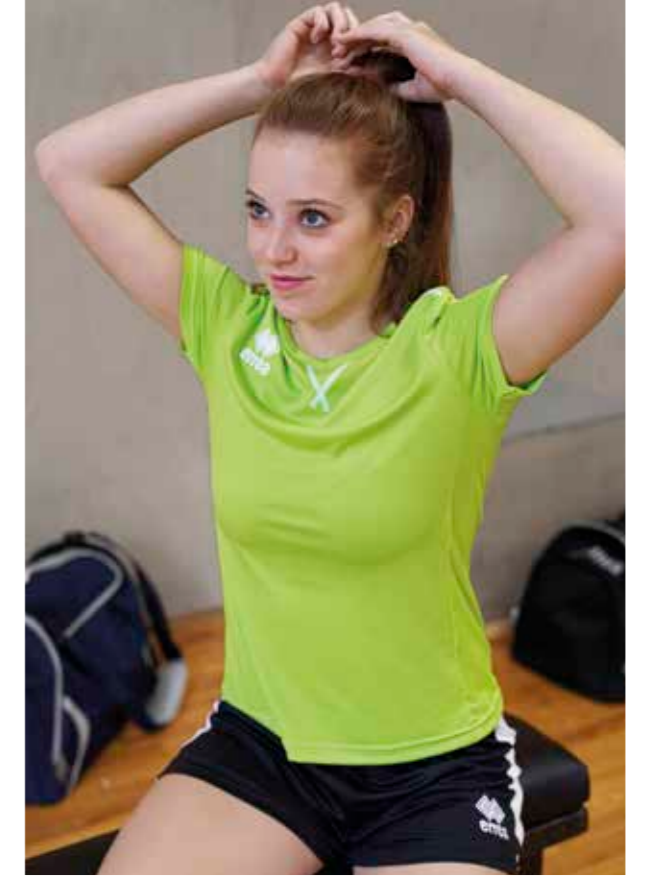
KYARA  
WOMAN SHORT

VOLLEYBALL  
WOMAN SHORT

EDO  
WOMAN SHORT

CARYS 3.0  
WOMAN SHORT

NEW SKIN  
SHORT



# DIVINA WOMAN

2024



ADULT	S/M/L/XL/XXL/3XL	FM880S
JUNIOR	YXS/XXS/XS	FM881S

MUNDIAL 100% POLYESTER - 145 g/mq

- Inserto in transfer
- Maglia smanicata
- Parasudore interno elastico
- Girocollo
- Fettucce in contrasto
- Sublimated insert
- Sleeveless T-shirt
- Internal elastic neck tape
- Crew neck
- Stripes in contrast
- Insert en sublimation
- Maillot sans manches
- Bande de propreté interne élastique
- Ras de cou
- Binding en contraste



06640

blue/navy/white



05210

white/blue/navy



00370

white/red/grey



05180

white/green/grey



19100

white/black/anthracite



05120

white/red/navy



06490

red/grey/white



05850

green/grey/white



07780

black/anthracite/white



04270

yellow/navy/white



03480

navy/yellow/white



02060

navy/red/white

## DELSIN MAN SPECIAL ORDER



IT FITS LIKE SIDE SLEEVELESS

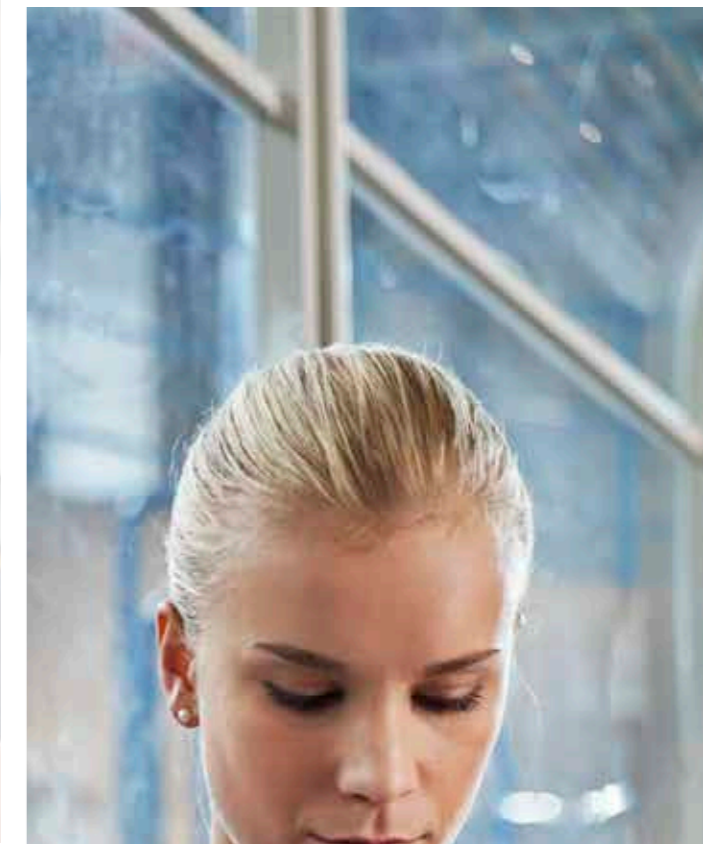
ONLY COLOURS DIVINA SHIRT

ADULT	S/M/L/XL/XXL/3XL/4XL	PMJH3S
JUNIOR	YXS/XXS/XS	PMJH4S

MIN. 50 PCS min. 10 per size with multiples of 2



KYARA WOMAN SHORT AMAZON 3.0 WOMAN SHORT AMAZON WOMAN SHORT CARYS 3.0 WOMAN SHORT VOLLEYBALL WOMAN SHORT



# LISA WOMAN

2022



ADULT	S/M/L/XL/XXL/3XL	FM830S
JUNIOR	YXS/XXS/XS	FM831S

MUNDIAL 100% POLYESTER - 145 g/mq

UTILITY 100% POLYESTER - 145 g/mq

- Collo a V con doppio fintino e parasudore interno elastico
- Inserts in tessuto Utility e Skin
- Fondo maglia con orlo
- V-neck with double fabric border and internal elastic neck tape
- Inserts in Utility and Skin fabrics
- Hemmed shirt bottom
- Col V avec double patte et bande de propreté interne
- Inserts en tissu Utility et Skin
- Bas du maillot avec ourlet



06640  
blue/navy/white



19100  
white/black/anthracite



00410  
white/navy/red



04270  
yellow/navy/white



07780  
black/anthracite/white



02060  
navy/red/white



03480  
navy/yellow/white



05210  
white/blue/navy



02850  
orange/black/white



33290  
fuchsia fluo/black/white

## LUCK MAN SPECIAL ORDER



IT FITS LIKE LUCAS SLEEVELESS

ONLY COLOURS LISA SHIRT

ADULT	S/M/L/XL/XXL/3XL/4XL	PMIR3S
JUNIOR	YXS/XXS/XS	PMIR4S

MIN. 50 PCS min. 10 per size with multiples of 2



AMAZON 3.0  
WOMAN SHORT



AMAZON  
WOMAN SHORT

KYARA  
WOMAN SHORT



VOLLEYBALL  
WOMAN SHORT



# ALISON WOMAN

2024



ADULT	S/M/L/XL/XXL/3XL	FM740S
JUNIOR	YXS/XXS/XS	FM741S

UTILITY 100% POLYESTER - 145 g/mq

- Collo a giro con parasudore interno elastico
- Cuciture con copertura a tre aghi in contrasto
- Crew neck with internal elastic neck tape
- Three-needle overstitching in contrasting colour
- Col rond avec bande de propreté interne élastique
- Coutures de couverture à trois aiguilles, en contraste



## ALLAN MAN SPECIAL ORDER

IT FITS LIKE **SIDE** SLEEVELESS

ONLY COLOURS **ALISON** SHIRT

ADULT	S/M/L/XL/XXL/3XL	PMJJ3S
JUNIOR	YXS/XXS/XS	PMJJ4S

MIN. 50 PCS min. 10 per size with multiples of 2

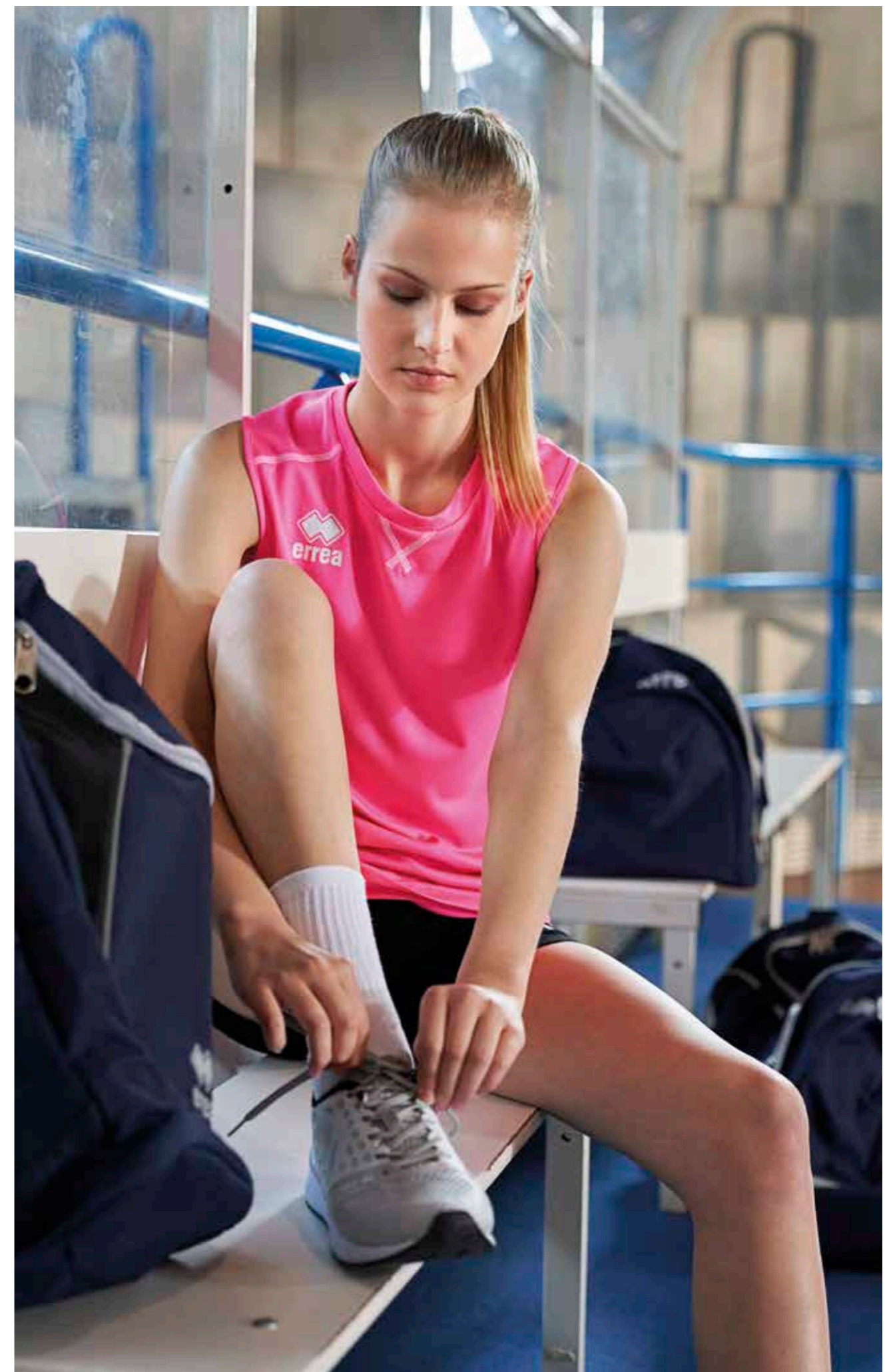


VOLLEYBALL  
WOMAN SHORT

KYARA  
WOMAN SHORT

AMAZON 3.0  
WOMAN SHORT

AMAZON  
WOMAN SHORT



**ANSI WOMAN LONG SLEEVES**  
SPECIAL ORDER

MIN. 50 PCS min. 10 per size with multiples of 2



ADULT

S/M/L/XL/XXL/3XL

PMDH3L

JUNIOR

YXS/XXS/XS

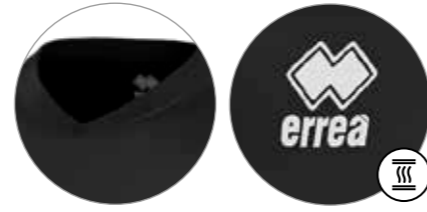
PMDH4L

PREMIER 82% POLYESTER 18% ELASTANE - 165 g/mq

- Manica raglan
- Collo a V con parasudore interno elastico
- Inserti laterali per una migliore vestibilità

- Shirt with raglan sleeves.
- V-neck with internal elastic neck-tape.
- Lateral inserts for improved wearability

- Manches raglan.
- Col V avec bande de propreté interne élastique
- Inserts latéraux pour une meilleure ligne



00120  
black



00010  
white



00090  
navy



00500  
red/white

Esempio personalizzato - Example personalised - Exemple personelisé





# ISABEL WOMAN



2024		Oeko-Tex Standard 100	ADULT	S/M/L/XL/XXL/3XL	FP980Z
			JUNIOR	YXS/XXS/XS	FP981Z

MALAGA 80% POLYAMIDE 20% ELASTANE - 190 g/mq

- Alto fascione elastico in vita
- Tassello interno coscia
- Taglio comfort laterale
- High elastic waistband
- Inner thigh gusset
- Comfortable side cut
- Bande élastique à la taille
- Renfort à l'intérieur des cuisses
- Coupe confort latéral



00090 navy



00120 black

# PREMIER WOMAN



2024		Oeko-Tex Standard 100	ADULT	S/M/L/XL/XXL	B725
			JUNIOR	XS	B726

PREMIER 82% POLYESTER 18% ELASTANE - 165 g/mq

- Elastico in vita
- Cuciture a tre aghi in contrasto
- Tassello interno coscia per maggiore comfort
- Elastic waistband
- Three-needle stitching in contrasting colour
- Inner thigh gusset for maximum comfort
- Élastique à la taille
- Coutures à trois aiguilles en contraste
- Renfort à l'intérieur des cuisses pour un meilleur confort



000009 navy



000002 red



000007 blue



000012 black

# AMAZON 3.0 WOMAN



2024		Oeko-Tex Standard 100	ADULT	S/M/L/XL/XXL/3XL	FP940Z
			JUNIOR	YXS/XXS/XS	FP941Z

MUNDIAL 100% POLYESTER - 145 g/mq

- Elastico in vita
- Inserto laterale in contrasto
- Tassello interno coscia
- Elastic waistband
- Contrasting insert on sides
- Inner thigh gusset
- Élastique à la taille
- Insert latérale en contraste
- Renfort à l'intérieur des cuisses



01910 navy/red



00500 red/white



00900 green/white



01500 blue/white



01900 navy/white



01920 navy/yellow



02520 black/yellow



04610 black/fuchsia fluo



02500 black/white

# KYARA WOMAN



2024		Oeko-Tex Standard 100	ADULT	S/M/L/XL/XXL/3XL	FP950Z
			JUNIOR	YXS/XXS/XS	FP951Z

SORRENTO 92% COTTON 8% ELASTANE - 220 g/mq

- Elastico in vita
- Inserto laterale in contrasto
- Tassello interno coscia
- Carrè sul retro
- Elastic waistband
- Contrasting insert on sides
- Inner thigh gusset
- Carrè on the back
- Élastique à la taille
- Inserts latérale en contraste
- Renfort à l'intérieur des cuisses
- Carrè à l'arrière



01900 navy/white



02500 black/white

# VOLLEYBALL WOMAN



2024		Oeko-Tex Standard 100	ADULT	S/M/L/XL/XXL	D715
			JUNIOR	YXS/XXS/XS	D716

SORRENTO 92% COTTON 8% ELASTANE - 220 g/mq

- Elastico in vita
- Tassello interno coscia
- Elastic waistband
- Inner thigh gusset
- Élastique à la taille
- Renfort à l'intérieur des cuisses



000002 red



000007 blue



000009 navy



000012 black

# AMAZON WOMAN



2022		Oeko-Tex Standard 100	ADULT	S/M/L/XL/XXL	D745
			JUNIOR	YXS/XXS/XS	D746

MUNDIAL 100% POLYESTER - 145 g/mq

- Elastico in vita
- Inserto laterale in contrasto
- Tassello interno coscia
- Elastic waistband
- Contrasting insert on sides
- Inner thigh gusset
- Élastique à la taille
- Insert latérale en contraste
- Renfort à l'intérieur des cuisses



000191 navy/red



000050 red/white



000090 green/white



000150 blue/white



000190 navy/white



000192 navy/yellow



000250 black/white



000252 black/yellow

Fino ad esaurimento scorte  
While stocks last  
Jusqu'à épuisement du stock

# CARYS 3.0 WOMAN



2024



ADULT S/M/L/XL/XXL/3XL  
JUNIOR XXS/XS

FP860Z

FP861Z

MUNDIAL 100% POLYESTER - 145 g/mq

- Elastico in vita e laccioli regolabili
- Inserto laterale in contrasto
- Elastic waistband and adjustable drawstring
- Contrasting insert on sides
- Élastique à la taille et lacets réglables
- Insert latérale en contraste



00500  
red/white

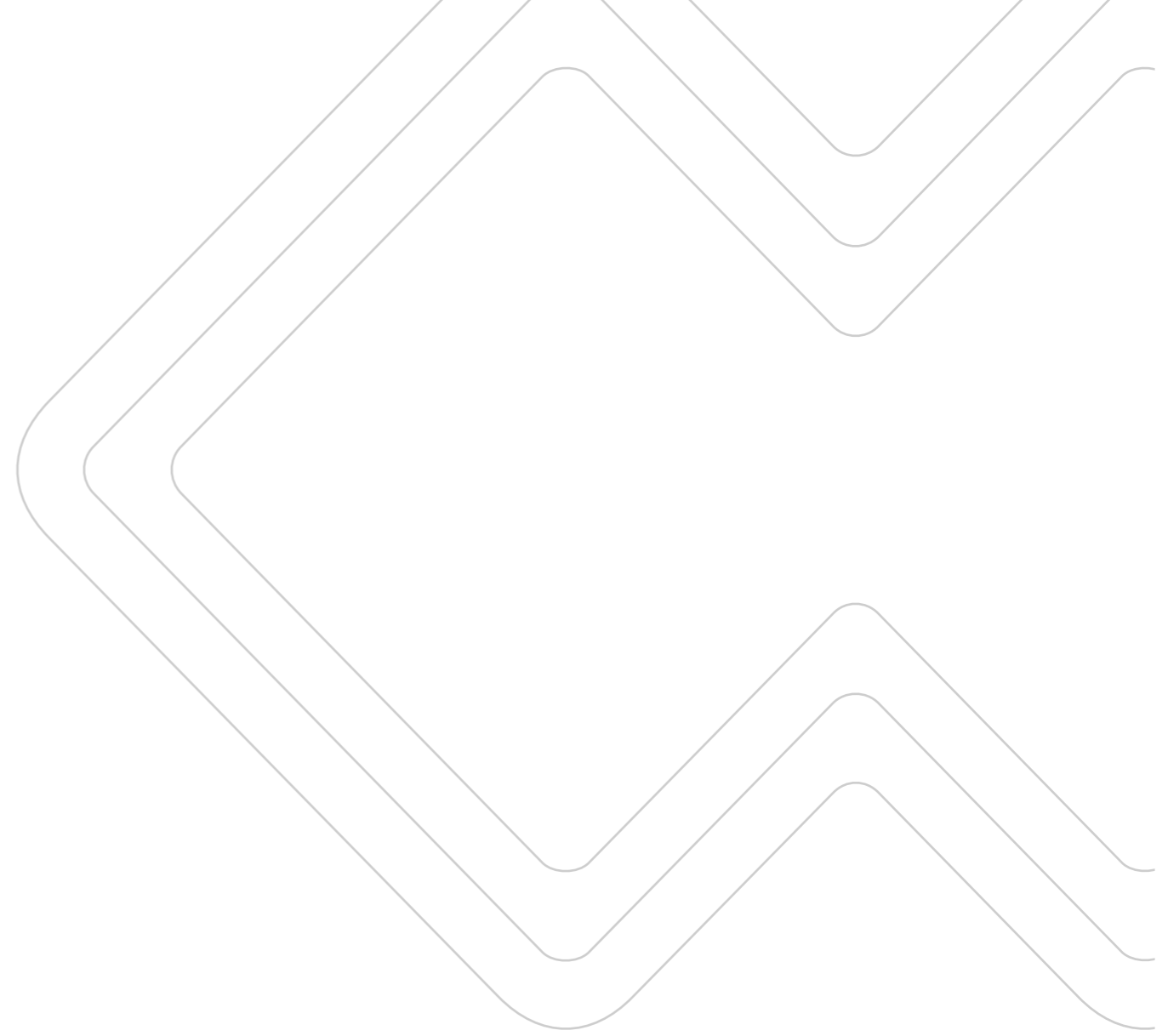


00900  
green/white

01500  
blue/white

01900  
navy/white

02500  
black/white



# ROS 3.0 WOMAN



2024



ADULT S/M/L/XL/XXL  
JUNIOR YXS/XXS/XS

FP880Z

FP881Z

MUNDIAL 100% POLYESTER - 145 g/mq

- Minigonna con panta interno
- Elastico in vita
- Miniskirt with undershorts
- Elastic waistband
- Mini-jupe avec short interne
- Élastique à la taille



00070  
blue



00010  
white

00020  
red

00090  
navy

00120  
black



# MAN

# DIAMANTIS

2024



ADULT S/M/L/XL/XXL/3XL/4XL

FM870C

JUNIOR YXS/XXS/XS

FM871C

MUNDIAL 100% POLYESTER - 145 g/mq

- Inserto in transfer
- Manica raglan
- Parasudore interno elastico
- Girocollo
- Fettucce in contrasto
- Sublimated insert
- Raglan sleeve
- Internal elastic neck tape
- Crew neck
- Stripes in contrast
- Insert en sublimation
- Manche raglan
- Bande de propreté interne élastique
- Ras de cou
- Binding en contraste



19540  
black/green fluo/white



05120  
white/red/navy



05210  
white/blue/navy



55690  
white/black/after eight



05850  
green/grey/white



05730  
yellow/black/anthracite



00660  
red/yellow/white



00670  
red/black/white



03280  
maroon/grey/white



06640  
blue/navy/white



07430  
navy/grey/white



02060  
navy/red/white



03480  
navy/yellow/white



08860  
black/orange fluo/white



07780  
black/anthracite/white

**DREAM WOMAN**  
SPECIAL ORDER

CUSTOM  
SUBLIMATION

IT FITS LIKE  
LENNY

ONLY COLOURS  
DIAMANTIS SHIRT

ADULT S/M/L/XL/XXL/3XL

PMJI3C

JUNIOR YXS/XXS/XS

PMJI4C

MIN. 50 PCS min. 10 per size with multiples of 2



BONN  
SHORT



EDO  
SHORT



NEW SKIN  
SHORT



# BRIAN

► BRIGIT WOMAN MODEL

2022



ADULT S/M/L/XL/XXL/3XL/4XL

FM930C

JUNIOR

XS

FM931C

TECHNOSTRETCH 100% POLYESTER - 108 g/mq

- Manica a giro
- Collo a V con parasudore elastico interno
- Maniche e fondo maglia con orlo
- Inserto laterale in contrasto
- Set-in sleeves
- V-neck with internal elastic neck-tape
- Hemmed sleeves and shirt bottom
- Contrasting insert on sides
- Manches montées
- Col V avec bande de propreté interne élastique
- Manches et bas du maillot avec ourlet
- Insert latérale en contraste



00500  
red/white



00010  
white



01500  
blue/white



01900  
navy/white



00900  
green/white



02500  
black/white



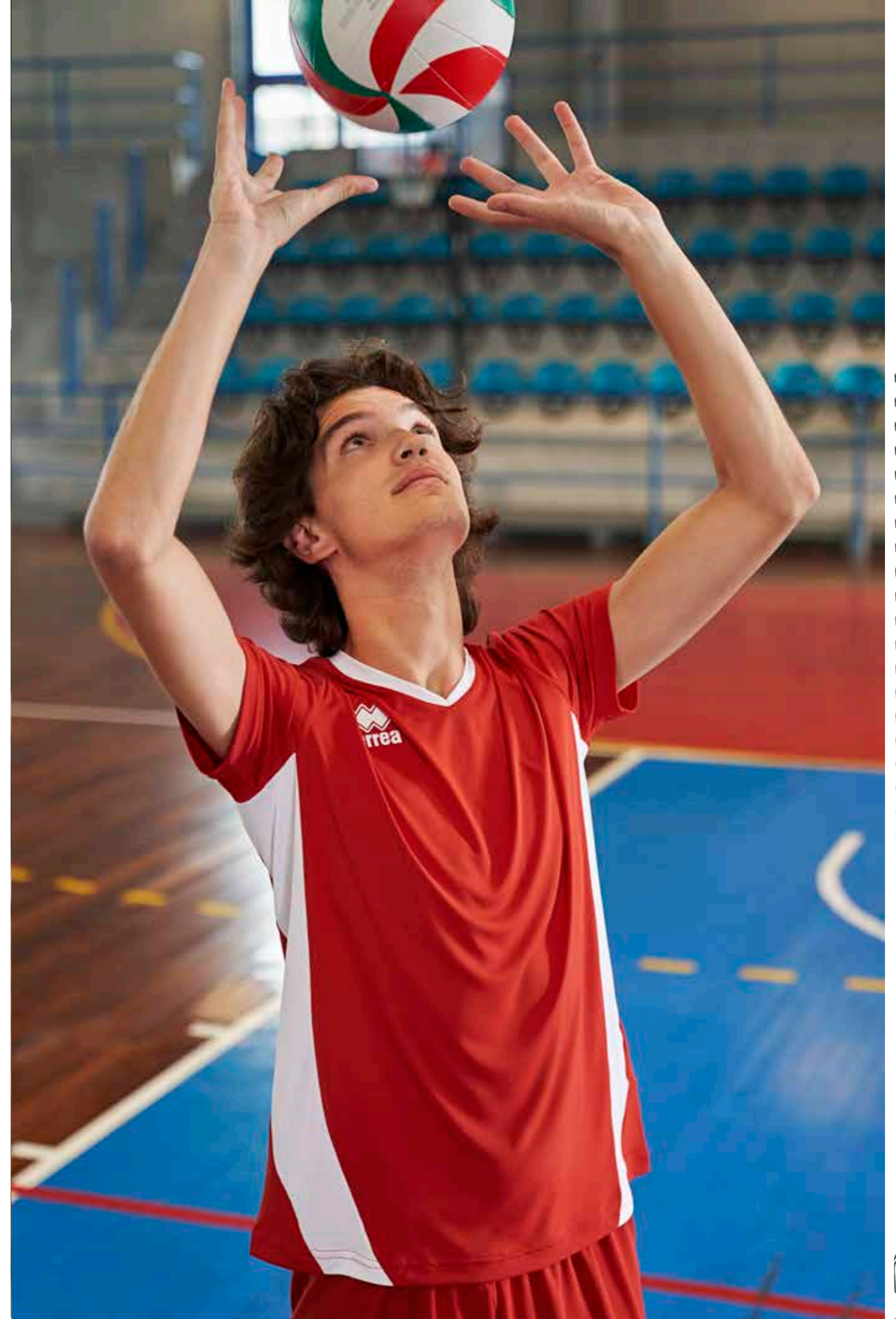
BOLTON  
SHORT



EDO  
SHORT



NEW SKIN  
SHORT



# TI-MOTHY



2023



ADULT

S/M/L/XL/XXL/3XL

FMA20C

JUNIOR

YXS/XXS/XS

FMA21C

TI-ENERGY 3.0 100% POLYESTER - 130 g/mq

- Filato Ti-energy antivirale e antibatterico
- Manica a giro
- Collo a giro con inserto e parasudore interno elastico
- Polso e orlo sul fondo

- Ti-energy anti-viral and anti-bacterial fabric
- Set-in sleeves
- Crew neck with insert and internal elastic neck tape
- Cuff and hem on bottom

- Ti-energy tissu anti-viral et antibactérien
- Manches montées
- Col rond avec insert et bande de propreté interne élastique
- Poignet et ourlet au le bas



00260  
white/blue



00280  
white/navy



00500  
red/white



03100  
maroon/white



00900  
green/white



01500  
blue/white



01900  
navy/white



02500  
black/white



TI-MOTHY  
SHORT



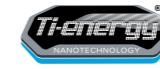
EDO  
SHORT



NEW SKIN  
SHORT



# TI-MOTHY SHORT



2023



ADULT

S/M/L/XL/XXL

FPA10Z

JUNIOR

YXS/XXS/XS

FPA11Z

TI-ENERGY 3.0 100% POLYESTER - 130 g/mq

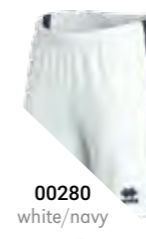
- Filato Ti-energy antivirale e antibatterico
- Elastico in vita con laccioli regolabili
- Inserto laterale in contrasto

- Ti-energy anti-viral and anti-bacterial fabric
- Elastic waistband and adjustable drawstring
- Contrasting insert on sides

- Ti-energy tissu anti-viral et antibactérien
- Élastique à la taille et lacets réglables
- Insert latérale en contraste



00260  
white/blue



00280  
white/navy



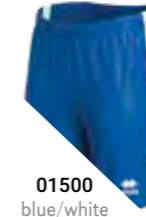
00500  
red/white



03100  
maroon/white



00900  
green/white



01500  
blue/white



01900  
navy/white



02500  
black/white



# LUCAS

► LENNY WOMAN MODEL

2022



CUSTOM  
SUBLIMATION



ADULT S/M/L/XL/XXL/3XL/4XL

FM680C

JUNIOR YXS/XXS/XS

FM681C

KID 2YXS

FM682C

MUNDIAL 100% POLYESTER - 145 g/mq

UTILITY 100% POLYESTER - 145 g/mq

- Manica raglan
- Collo a V con doppio fintino e parasudore interno elastico
- Inserti in tessuto Utility e Skin
- Fondo maglia con orlo
- Raglan sleeves
- V-neck with twin layer border and internal elastic neck tape
- Inserts in Utility and Skin fabric
- Hemmed shirt bottom
- Manches raglan
- Col V avec double patte et bande de propreté interne élastique
- Inserts en tissu Utility et Skin
- Bas du maillot avec ourlet



35730  
cyan/navy/white



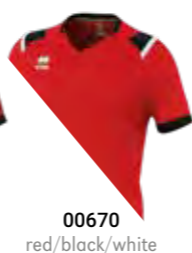
05210  
white/blue/navy



00410  
white/navy/red



03260  
maroon/black/white



00670  
red/black/white



03480  
navy/yellow/white



02060  
navy/red/white



06640  
blue/navy/white



02850  
orange/black/white



00870  
yellow/blue/white



09830  
yellow fluo/black/white



01070  
green/black/white



35770  
green fluo/black/white



06450  
anthracite/yellow fluo/white



02660  
black/yellow/white



07780  
black/anthracite/white



BOLTON  
SHORT



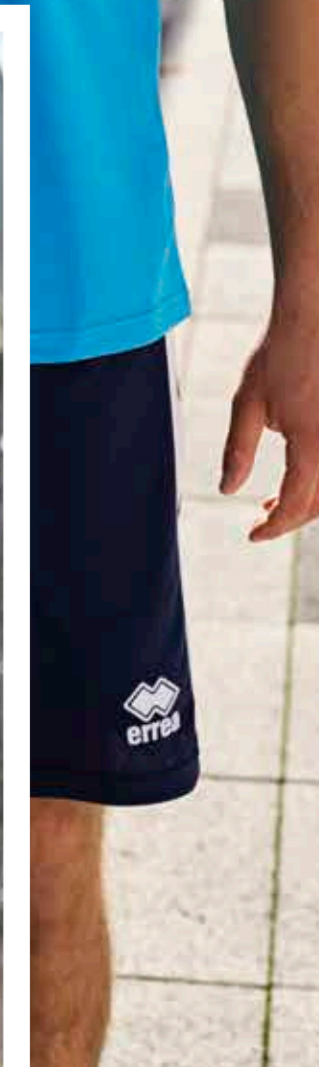
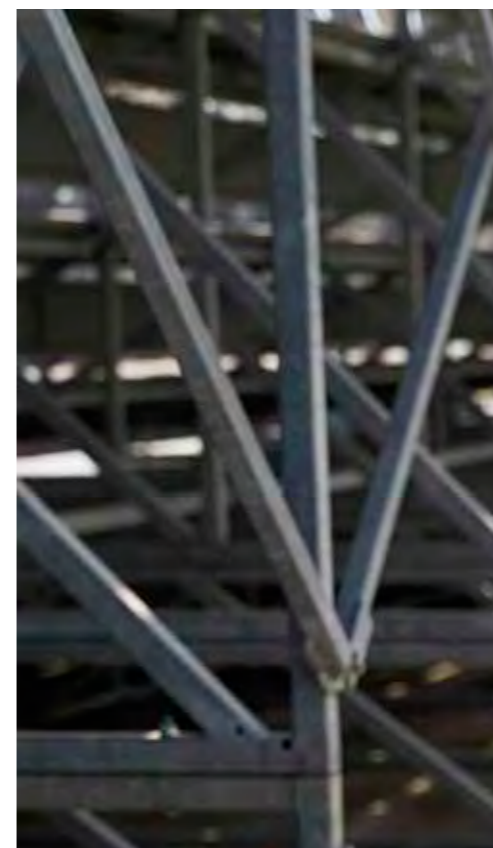
BARNEY  
SHORT



EDO  
SHORT



NEW SKIN  
SHORT



# LEX

2022



ADULT S/M/L/XL/XXL/3XL/4XL

FM820C

MUNDIAL 100% POLYESTER - 145 g/mq  
UTILITY 100% POLYESTER - 145 g/mq

- Manica a raglan
- Collo a giro e parasudore interno elastico
- Cuciture ribattute a 2 aghi
- Inserti in tessuto Utility e Skin
- Fondo maglia con orlo
- Raglan sleeves
- Crew neck with internal elastic neck tape
- Reinforced stitchings
- Inserts in Utility and Skin fabric
- Hemmed shirt bottom
- Manches raglan
- Col rond avec bande de propreté interne élastique
- Coutures renforcées
- Inserts en tissu Utility et Skin
- Bas du maillot avec ourlet



00410  
white/navy/red



06640  
blue/navy/white



03480  
navy/yellow/white



02060  
navy/red/white



00670  
red/black/white



01070  
green/black/white



19100  
white/black/anthracite



05210  
white/blue/navy

## LINDA WOMAN SPECIAL ORDER

- Cuciture ribattute a 2 aghi
- Reinforced stitchings
- Coutures renforcées



IT FITS LIKE  
LENNY

ONLY COLOURS  
LEX SHIRT

ADULT S/M/L/XL/XXL/3XL

PMJF3C

JUNIOR YXS/XXS/XS

PMJF4C

MIN. 50 PCS min. 10 per size with multiples of 2



BOLTON  
SHORT

BARNEY  
SHORT

CARYS 3.0  
WOMAN SHORT

EDO  
SHORT

NEW SKIN  
SHORT



# BRANDON

2025		OEKO-TEX® STANDARD 100 CERTIFIED	ADULT	S/M/L/XL/XXL	GMOA0C
			JUNIOR	XXS/XS	GMOA1C

SKIN 100% POLYESTER - 125 g/mq

- Manica a giro
- Girocollo
- Parasudore elastico interno
- Manica corta con orlo
- Maglia bicolore taglia e cucì
- Set-in sleeves
- Round neck
- Internal elastic neck tape
- Short sleeves with hem
- Two-colour cut and sew shirt
- Manches montées
- Col rond
- Bande de propreté interne
- Manches courtes avec ourlet
- Maillot bicolore patchwork



01520  
blue/yellow



00210  
white/red

00280  
white/navy

00260  
white/blue

00310  
white/black

03100  
maroon/white

03140  
maroon/sky blue

00500  
red/white

01900  
navy/white

01500  
blue/white

02500  
black/white

00900  
green/white



01920  
navy/yellow

00780  
yellow/navy

00810  
yellow/black

00730  
yellow/green

04950  
amber/black



02810  
orange/black

00610  
red/black

00580  
red/navy

01910  
navy/red

01180  
sky blue/navy



41920  
after eight/black

68860  
military green/black

## BRENDA WOMAN SPECIAL ORDER

IT FITS LIKE  
LENNY

CUSTOM  
SUBLIMATION

ADULT	S/M/L/XL/XXL	PML03C
JUNIOR	YXS/XXS/XS	PML04C

MIN. 50 PCS min. 10 per size with multiples of 2



BARNEY  
SHORT

BONN  
SHORT

NEW SKIN  
SHORT

# BARNEY SHORT

2025		OEKO-TEX® STANDARD 100 CERTIFIED	ADULT	S/M/L/XL/XXL	GPOA0Z
			JUNIOR	YXS/XXS/XS	GPOA1Z

SKIN 100% POLYESTER - 125 g/mq

- Elastico in vita con laccioli regolabili
- Inserto in contrasto sul fondo
- Elasticated waistband with adjustable drawstring
- Contrasting insert along the bottom
- Élastique à la taille et lacets réglables
- Pièce en contraste dans le bas



01520  
blue/yellow

00500  
red/white

01500  
blue/white

01920  
navy/yellow

01900  
navy/white

01910  
navy/red

01940  
navy/sky blue

03100  
maroon/white

03140  
maroon/sky blue

00900  
green/white

00920  
green/yellow

45790  
black/after eight

02500  
black/white

02520  
black/yellow

04660  
black/amber

02510  
black/red

02620  
black/orange

68860  
military green/black





# EVERTON

► MARION WOMAN MODEL

2024



ADULT

S/M/L/XL/XXL/3XL

EM1R0C

JUNIOR

YXS/XXS/XS

EM1R1C

KID

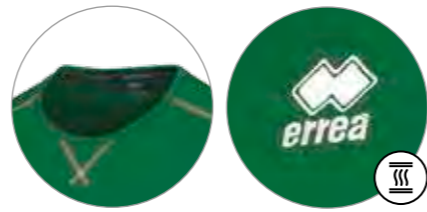
2YXS

EM1R2C

UTILITY 100% POLYESTER - 145 g/mq

- Manica a giro
- Collo a giro con parasudore interno elastico
- Cuciture con copertura a tre aghi in contrasto
- Inserti laterali per una migliore vestibilità
- Set-in sleeves
- Crew neck with internal elastic neck-tape
- Three-needle over stitching in contrasting colour
- Side panels for improved wearability

- Manche montée
- Col rond avec bande de propreté interne élastique
- Coutures avec couverture à trois aiguilles, en contraste
- Empiècements latéraux pour une meilleure ligne



00040 green



00010 white



03320 green fluo



03310 yellow fluo



00030 yellow



03340 orange fluo



35990 cyan



00070 blue



00090 navy



00020 red



00150 maroon



00120 black

## EVERTON LONG SLEEVES SPECIAL ORDER

ONLY COLOURS **EVERTON** SHIRT

MIN. 16 PCS min. 4 per size with multiples of 2



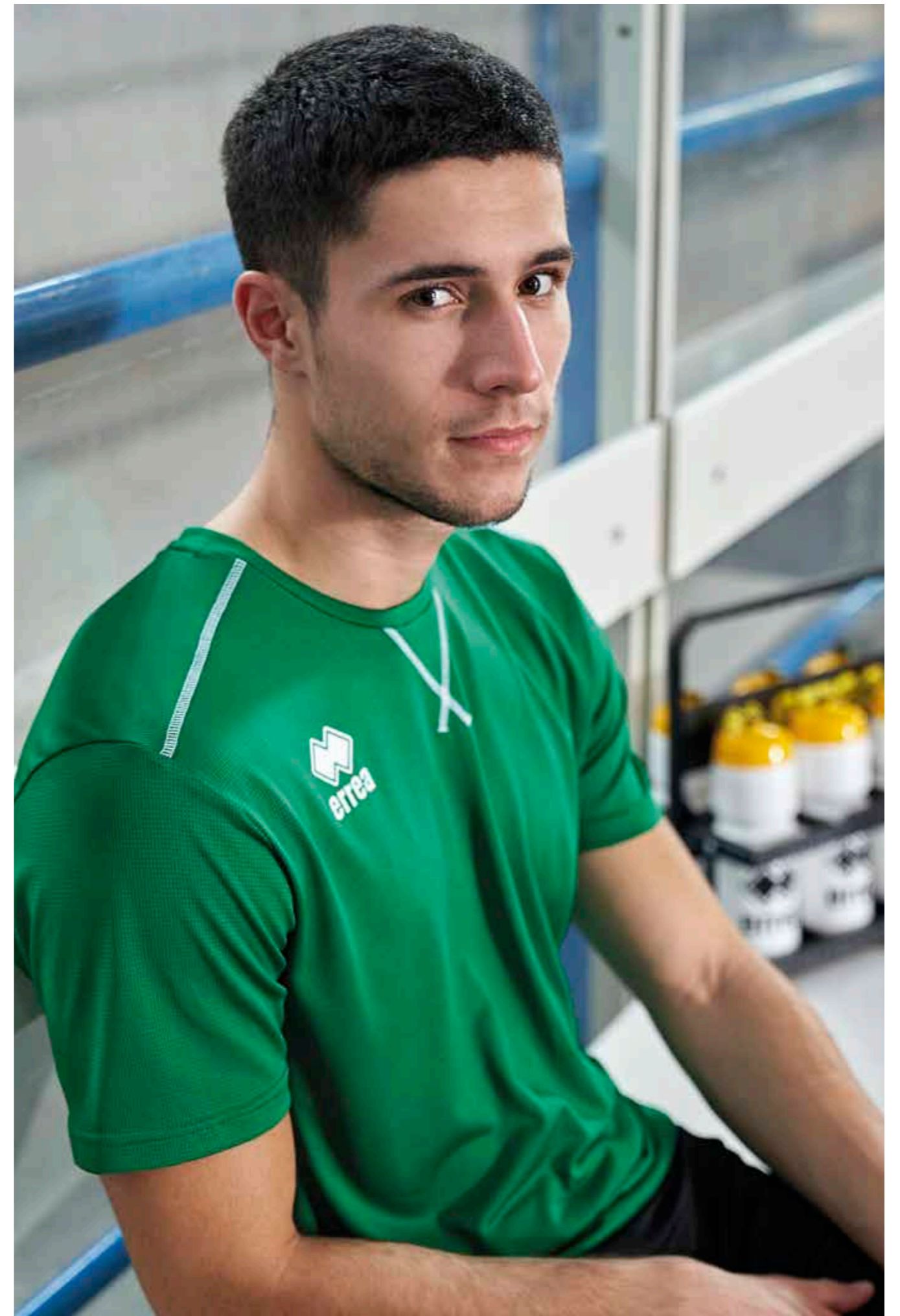
BONN SHORT



EDO SHORT



NEW SKIN SHORT



# LENNOX

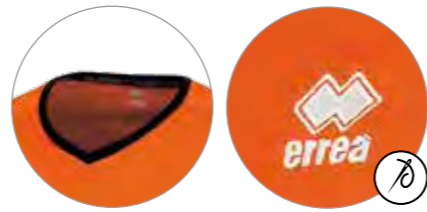
2024



ADULT	S/M/L/XL/XXL	SS LS	EM1U0C EM1U0L
JUNIOR	YXS/XXS/XS	SS LS	EM1U1C EM1U1L
KID	2YXS	SS LS	EM1U2C EM1U2L

SKIN 100% POLYESTER - 125 g/mq

- Manica raglan
- Raglan sleeves
- Manche raglan
- Collo a V con parasudore interno elastico
- V-neck with internal elastic neck-tape
- Col V avec bande de propreté interne élastique
- Inserti laterali per una migliore vestibilità
- Lateral inserts for improved wearability
- Inserts latérales pour une meilleure ligne



03100  
maroon/white



00500  
red/white



00700  
yellow/white



59080  
yellow fluo/white



05790  
green fluo/white



02810  
orange/black



00300  
white/grey



01100  
sky blue/white



15270  
cyan/white



01500  
blue/white



01900  
navy/white



02900  
purple/white



00900  
green/white



02500  
black/white



01910  
navy/red



01920  
navy/yellow



BONN  
SHORT



NEW SKIN  
SHORT



# TRANSFER 3.0

2024			ADULT	S/M/L/XL/XXL	FP740Z
			JUNIOR	XXS/XS	FP741Z

MUNDIAL 100% POLYESTER - 145 g/mq

- Pantalo corto en transferencia
- Elástico en la vida e lacioli regulabili
- Perfil lateral en contraste
- Sublimated shorts
- Elastic waistband and adjustable drawstring
- Contrasting trim on sides
- Short sublimé
- Élastique à la taille et lacets réglables
- Profil latéral en contraste



# BOLTON



2024			ADULT	S/M/L/XL/XXL	D195
			JUNIOR	YXS/XXS/XS	D196

MUNDIAL 100% POLYESTER - 145 g/mq

- Elástico en la vida e lacioli regulabili
- Inserto lateral en contraste
- Elastic waistband and adjustable drawstring
- Contrasting insert on sides
- Élastique à la taille et lacets réglables
- Insert latérale en contraste



# TI-MOTHY SHORT



2023			ADULT	S/M/L/XL/XXL	FPA10Z
			JUNIOR	YXS/XXS/XS	FPA11Z

TI-ENERGY 3.0 100% POLYESTER - 130 g/mq

- Filato Ti-energy antivirale e antibatterico
- Elástico en la vida con lacioli regulabili
- Inserto lateral en contraste
- Ti-energy anti-viral and anti-bacterial fabric
- Elastic waistband and adjustable drawstring
- Contrasting insert on sides
- Ti-energy tissu anti-viral et antibactérien
- Élastique à la taille et lacets réglables
- Insert latérale en contraste



# EDO SHORT



2025			ADULT	S/M/L/XL/XXL	GPOB0Z
			JUNIOR	YXS/XXS/XS	GPOB1Z

MUNDIAL 100% POLYESTER - 145 g/mq

- Elástico en la vida con lacioli regulabili
- Orlo sul fondo
- Elastic waistband with adjustable drawstring
- Bottom hem
- Élastique à la taille et lacets réglables
- Ourlet dans le bas



# BARNEY SHORT



2025



ADULT	S/M/L/XL/XXL	GPOA0Z
JUNIOR	YXS/XXS/XS	GPOA1Z

SKIN 100% POLYESTER - 125 g/mq

- Elastico in vita con laccioli regolabili
- Inserto in contrasto sul fondo
- Élastique à la taille et lacets réglables
- Pièce en contraste dans le bas
- Élastique à la taille et lacets réglables
- Pièce en contraste dans le bas



01910 navy/red



00500 red/white	01500 blue/white	01520 blue/yellow	01900 navy/white	01920 navy/yellow	01940 navy/sky blue
03100 maroon/white	03140 maroon/sky blue	00900 green/white	00920 green/yellow	02520 black/yellow	04660 black/amber
02500 black/white	02510 black/red	02620 black/orange	45790 black/after eight	68870 Black/Military Green	

# NEW SKIN



2024



ADULT	S/M/L/XL/XXL	A245
JUNIOR	YXS/XXS/XS	A246
KID	2YXS	A247

SKIN 100% POLYESTER - 125 g/mq

- Elastico in vita e laccioli regolabili
- Elastic waistband and adjustable drawstring
- Élastique à la taille et lacets réglables



003599 cyan



000001 white	000015 maroon	000002 red	000013 orange	000465 amber	000003 yellow
000331 yellow fluo	000332 green fluo	000004 green	000005 sky blue	000007 blue	000009 navy
000014 purple	000012 black	000011 grey	000478 pink	000006 fuchsia	

2022 COLLECTION | 189

# BONN



2024



ADULT	S/M/L/XL/XXL	DPOB0Z
JUNIOR	YXS/XXS/XS	DPOB1Z

SKIN 100% POLYESTER - 125 g/mq

- Elastico in vita e laccioli regolabili
- Bordino laterale in contrasto
- Elastic waistband and adjustable drawstring
- Contrasting border on sides
- Élastique à la taille et lacets réglables
- Boudin latéral en contraste



01900 navy/white



00280 white/navy	03100 maroon/white	00500 red/white	00900 green/white
01500 blue/white	01520 blue/yellow	01910 navy/red	01920 navy/yellow
02500 black/white	02510 black/red	02620 black/orange	



# KENNY

2024		CUSTOM SUBLIMATION	OEKO-TEX® STANDARD 100 BY HANDBLÄNDL	ADULT	S/M/L/XL/XXL	GMOI0S
				JUNIOR	XXS/XS	GMO1S

UTILITY 100% POLYESTER - 145 g/mq

- Collo a giro e sbracci con bordini in contrasto
- Cuciture piatte in tinta
- Fianchette laterali in contrasto
- Inserti catarifrangenti sul davanti e nel retro
- Crew neck and armholes with contrasting trim
- Flat stitching in matching colour
- Contrasting side panels
- Reflectors on front and back
- Col rond et emmanchures avec bords en contraste
- Coutures plates de même couleur
- Pièces latérales en contraste
- Pièces rétro réfléchissantes avant et arrière



00500  
red/white



00300  
white/grey



01500  
blue/white



01900  
navy/white



08180  
black/green fluo



59080  
yellow fluo/white

# SMITH

2022		CUSTOM SUBLIMATION	OEKO-TEX® STANDARD 100 BY HANDBLÄNDL	ADULT	S/M/L/XL/XXL	FM760S
				JUNIOR	XXS/XS	FM761S

UTILITY 100% POLYESTER - 145 g/mq

- Collo a giro e sbracci senza bordini
- Cuciture piatte in contrasto
- Fianchette laterali in contrasto
- Etichetta taglia applicata a caldo
- Tank with crew neck and armholes without edgings
- Flat stitching in contrasting colour
- Contrasting panels on sides
- Heat applied size label
- Débardeur à col rond et emmanchures sans bords
- Coutures plates en contraste
- Empiècements latéraux en contraste
- Étiquette de taille appliquée à chaud



01500  
blue/white



00260  
white/blue



00210  
white/red



15270  
cyan/white



04930  
orange fluo/black



04920  
yellow fluo/black



59120  
green fluo/black



08180  
black/green fluo

# KENNY WOMAN

2024		CUSTOM SUBLIMATION	OEKO-TEX® STANDARD 100 BY HANDBLÄNDL	ADULT	S/M/L/XL/XXL	GMOJ0S
				JUNIOR	XXS/XS	GMOJ1S

UTILITY 100% POLYESTER - 145 g/mq

- Collo a giro e sbracci con bordini in contrasto
- Cuciture piatte in tinta
- Fianchette laterali in contrasto
- Inserti catarifrangenti sul davanti e nel retro
- Crew neck and armholes with contrasting trim
- Flat stitching in matching colour
- Contrasting side panels
- Reflectors on front and back
- Col rond et emmanchures avec bords en contraste
- Coutures plates de même couleur
- Pièces latérales en contraste
- Pièces rétro réfléchissantes avant et arrière



00500  
red/white



00300  
white/grey



01500  
blue/white



01900  
navy/white



08180  
black/green fluo



59080  
yellow fluo/white

# SMITH WOMAN

2022		CUSTOM SUBLIMATION	OEKO-TEX® STANDARD 100 BY HANDBLÄNDL	ADULT	S/M/L/XL/XXL	FM770S
				JUNIOR	XXS/XS	FM771S

UTILITY 100% POLYESTER - 145 g/mq

- Collo a giro e sbracci senza bordini
- Cuciture piatte in contrasto
- Fianchette laterali in contrasto
- Etichetta taglia applicata a caldo
- Tank with crew neck and armholes without edgings
- Flat stitching in contrasting colour
- Contrasting panels on sides
- Heat applied size label
- Débardeur à col rond et emmanchures sans bords
- Coutures plates en contraste
- Empiècements latéraux en contraste
- Étiquette de taille appliquée à chaud



00260  
white/blue



00210  
white/red



01500  
blue/white



15270  
cyan/white



04920  
yellow fluo/black



04930  
orange fluo/black



22650  
fuchsia fluo/black



08180  
black/green fluo



59120  
green fluo/black

# DAFNE WOMAN



2022



ADULT	S/M/L/XL	EM1W0S
JUNIOR	XS	EM1W1S

PREMIER 82% POLYESTER 18% ELASTANE - 165 g/mq

- Cuciture piatte
- Flat stitching
- Coutures plates
- Inserto in contrasto
- Contrasting insert
- Pièce en contraste



01900  
navy/white



01500  
blue/white



00500  
red/white



02500  
black/white

# DAFNE EXTRA WOMAN



2022



ADULT	S/M/L/XL	FM960S
JUNIOR	XS	FM961S

PREMIER 82% POLYESTER 18% ELASTANE - 165 g/mq

- Top extra (+ 8 cm)
- Extra length (+ 8 cm)
- Top extra (+ 8 cm)
- Cuciture piatte
- Flat stitching
- Coutures plates
- Inserto in contrasto
- Contrasting insert
- Pièce latérale en contraste



01900  
navy/white



01500  
blue/white



00500  
red/white



02500  
black/white

# DENISE WOMAN



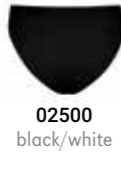
2022



ADULT	S/M/L/XL	EP1E0Z
JUNIOR	XS	EP1E1Z

PREMIER 82% POLYESTER 18% ELASTANE - 165 g/mq

- Cuciture piatte
- Flat stitching
- Coutures plates
- Inserto laterale in contrasto
- Contrasting insert on sides
- Pièce latérale en contraste



02500  
black/white



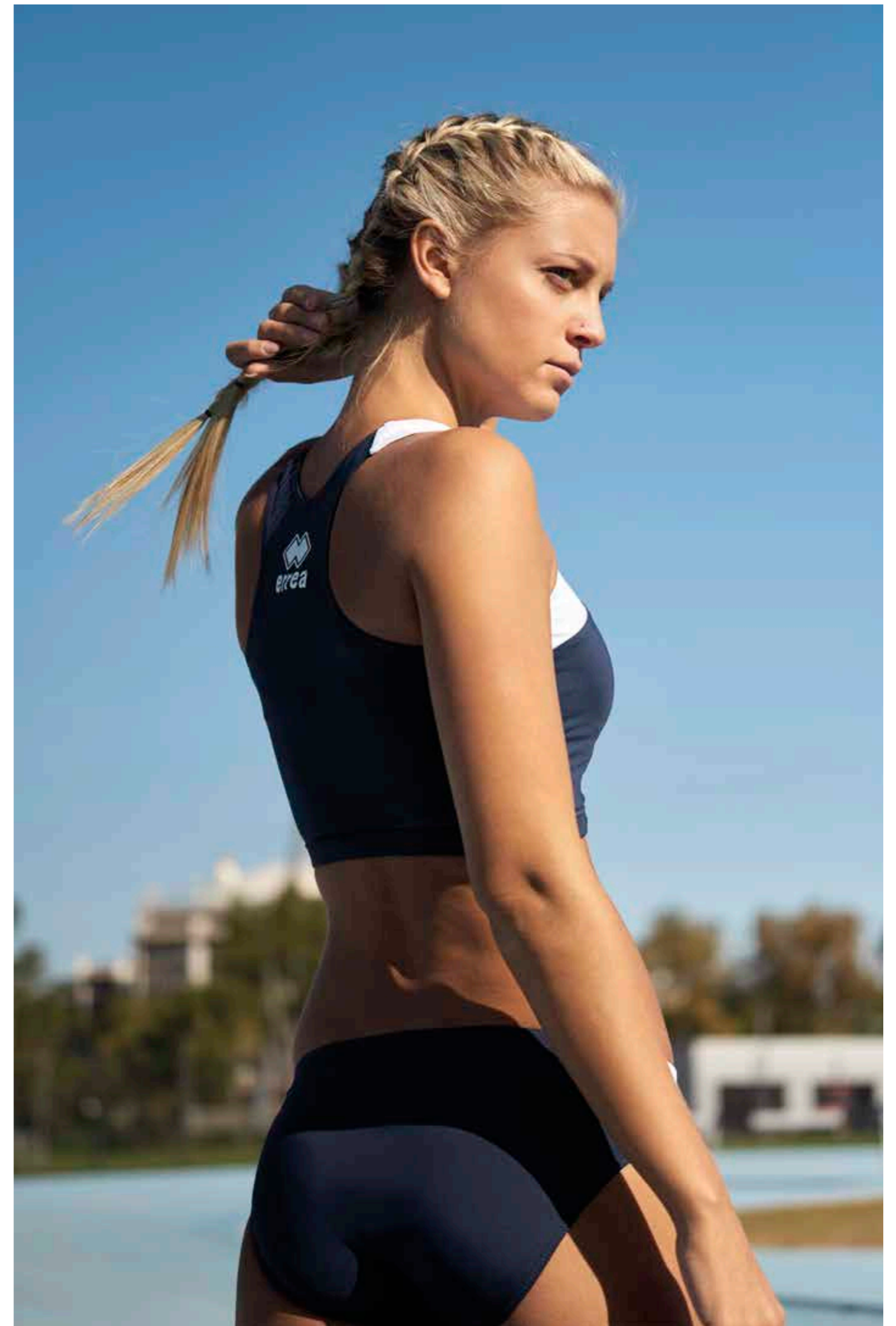
01900  
navy/white



01500  
blue/white



00500  
red/white



# ACTIVE

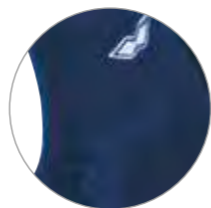
2024



ADULT	M:35/38-L:39/42-XL:43/47	A432
JUNIOR	XS: 31/34	A433

80% COTTON 16% NYLON 4% ELASTANE

- Altezza ginocchio
- Zona traspirante sul collo del piede
- Kneesocks
- Breathable zone on instep
- Hauteur genou
- Zone respirante sur le cou-de-pied



000190  
navy/white



000028  
white/navy



000250  
black/white

# ALPHA

2024



ADULT	M:35/38-L:39/42-XL:43/47	FC0A0Z
JUNIOR	XS: 31/34	FC0A1Z

80% COTTON 20% ELASTANE

- Compressione sull'arco plantare
- Tallone e punta rinforzati
- Compression on arch of the foot
- Reinforced heel and toe
- Compression sur voûte plantaire
- Talon et pointe renforcés



00280  
white/navy

# BEST

2024



ADULT		FC0B0Z
JUNIOR		FC0B1Z

45% COTTON 45% POLYESTER 10% ELASTANE

- Altezza sopra alla caviglia
- Particolarmente indicata per uso in allenamento
- Height above the ankle
- Particularly recommended for training
- Chaussettes bas en coton montant au-dessus de la cheville
- Spécialement indiquées pour l'entraînement



00010  
white



00090  
navy



00120  
black

# SKIP

2024



ADULT	M:35/38-L:39/42-XL:43/47	A422
JUNIOR	XS: 31/34	A423

80% COTTON 16% NYLON 4% ELASTANE

- Calza corta in cotone
- Zona traspirante sul collo del piede
- Cotton ankle socks
- Breathable zone on instep
- Chaussettes bas en coton
- Zone respirante sur le cou-de-pied



000028  
white/navy



000250  
black/white



000190  
navy/white

# JUMP

2024



ADULT	M:35/38-L:39/42-XL:43/47	FA2R0Z
-------	--------------------------	--------

50% COTTON 50% ELASTANE

- Calza corta in cotone
- Zona traspirante sul collo del piede
- Cotton ankle socks
- Breathable zone on instep
- Chaussettes bas en coton
- Zone respirante sur le cou-de-pied



02500  
black/white



00280  
white/navy

# COMFORT

2024



SIZE	ONE SIZE	A426
------	----------	------

80% COTTON 16% NYLON 4% ELASTANE

- Altezza caviglia
- Zona traspirante sul collo del piede
- Ankle socks
- Breathable zone on instep
- Hauteur cheville
- Zone respirante sur le coup-de-pied



000028  
white/navy



000250  
black/white

# TRAINING

2024



ADULT	M:35/38-L:39/42-XL:43/47	A428
JUNIOR	XS: 31/34	A429

55% COTTON 40% NYLON 5% ELASTANE

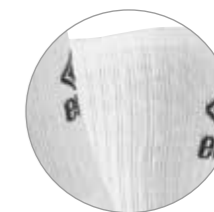
- Altezza polpaccio
- Zona traspirante sul polpaccio
- Calf-length socks
- Breathable zone on calf
- Chaussettes hauteur mollet
- Zone respirante sur le mollet

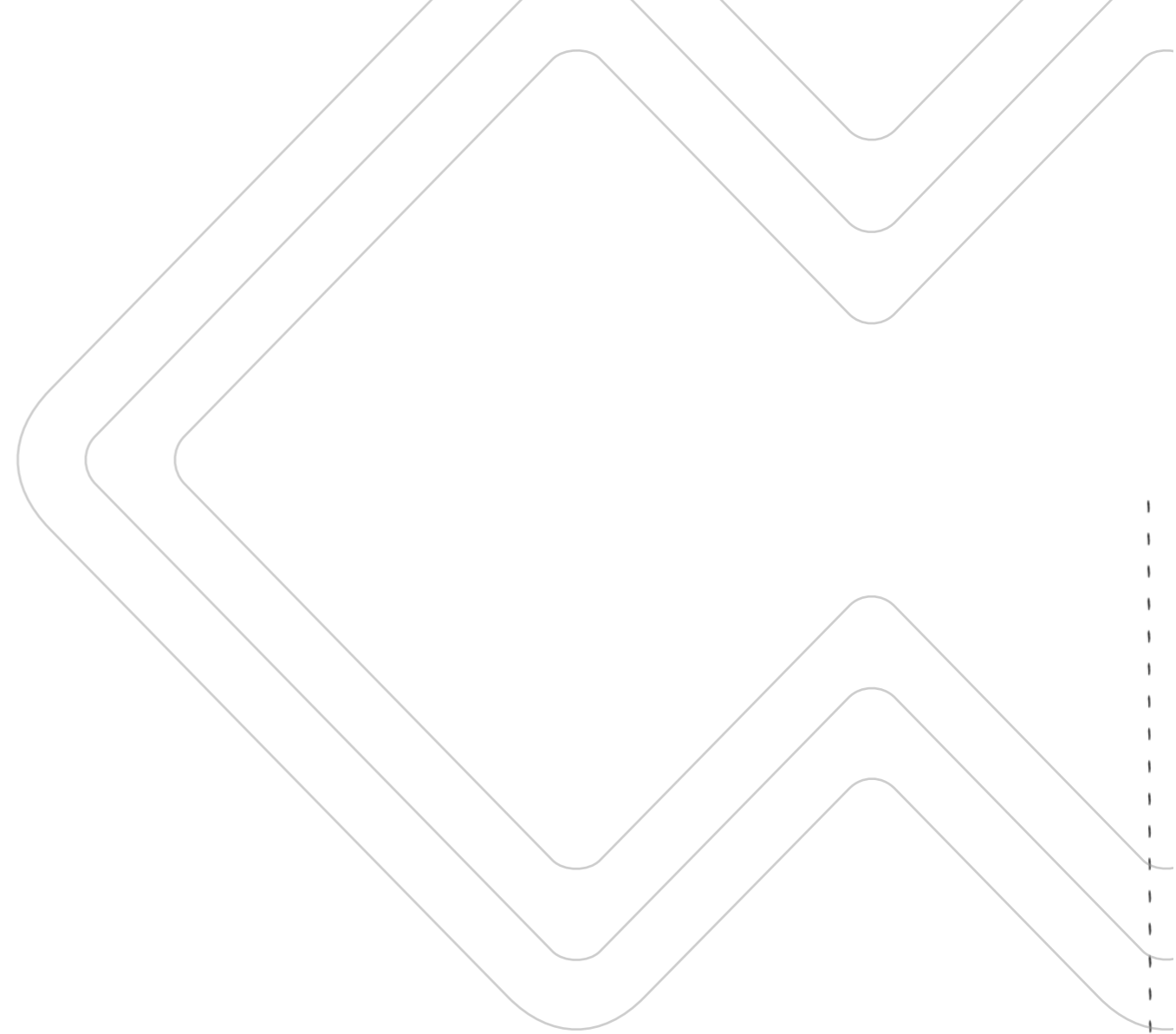


000031  
white/black



000190  
navy/white





*Ersea*  
**BASE LAYER**



# MIZAR

ACTIVE  
TENS

2024		MADE IN ITALY	OEKO-TEX® STANDARD 100 CERTIFIED	ADULT	S/M/L/XL/XXL	U700L
				JUNIOR	XS	U701L

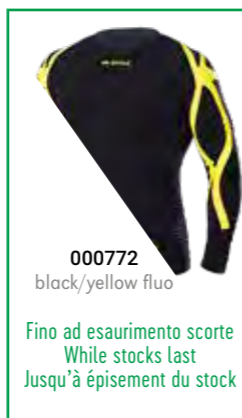
91% POLYAMIDE 9% ELASTAN



003708  
white/cyan



002510  
black/red



000772  
black/yellow fluo

Fino ad esaurimento scorte  
While stocks last  
Jusqu'à épuisement du stock

- Collo a giro progettata per migliorare postura e rendimento
- Esoscheletro a supporto posturale
- Supporto mirato per i muscoli della parte alta della schiena, articolazioni delle spalle e cuffie dei rotatori
- Supporto extra per gomiti e muscoli delle braccia
- Fasce elastiche interne a sostegno del deltoide, tricipite e trapezio
- Riduzione della vibrazione muscolare
- Traspirante
- Inserimento di fibre di Elastan di alta qualità per mantenere sempre la forma dell'indumento
- Tessuto elastico senza cuciture

- Long-sleeve shirt scientifically engineered to improve posture and performance
- Exoskeleton for postural support.
- Targeted support for the muscles in the upper part of the back, shoulders and rotator cuffs.
- Extra support for elbows and arm muscles.
- Inner elastic bands to support the deltoid, triceps and trapezoid muscles.
- Reduction of muscular vibration
- Breathable
- Insertion of high quality Elasthane fibres for permanent maintenance of the garment's shape
- Seamless elastic fabric

- Maillot à manches longues avec col rond conçu pour améliorer la posture et le rendement
- Exosquelette pour soutien postural
- Soutien ciblé pour les muscles de la partie haute du dos, les articulations des épaules et la coiffe des rotateurs
- Soutien extra pour les coudes et les muscles des bras
- Bandes élastiques internes de soutien du deltoïde, du triceps et du trapèze
- Réduction des vibrations musculaires
- Respirant
- Introduction de fibres Elastan de haute qualité pour toujours maintenir la forme du vêtement.
- Tissu élastique sans coutures

# SAIPH

ACTIVE  
TENS

2024		MADE IN ITALY	OEKO-TEX® STANDARD 100 CERTIFIED	ADULT	S/M/L/XL/XXL	U700
				JUNIOR	XS	U701

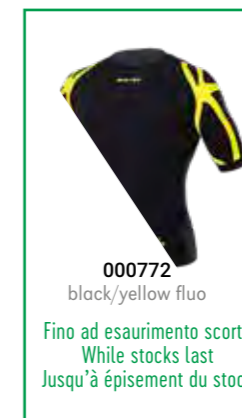
91% POLYAMIDE 9% ELASTAN



002510  
black/red



003708  
white/cyan



000772  
black/yellow fluo

Fino ad esaurimento scorte  
While stocks last  
Jusqu'à épuisement du stock

- Collo a giro progettata per migliorare postura e rendimento
- Esoscheletro a supporto posturale
- Supporto mirato per i muscoli della parte alta della schiena, articolazioni delle spalle e cuffie dei rotatori
- Supporto extra per gomiti e muscoli delle braccia
- Fasce elastiche interne a sostegno del deltoide, tricipite e trapezio
- Riduzione della vibrazione muscolare
- Traspirante
- Inserimento di fibre di Elastan di alta qualità per mantenere sempre la forma dell'indumento
- Tessuto elastico senza cuciture

- Short-sleeve shirt with crew neck designed to improve posture and performance.
- Exoskeleton for postural support.
- Targeted support for the muscles in the upper part of the back, shoulders and rotator cuffs.
- Extra support for elbows and arm muscles.
- Inner elastic bands to support the deltoid, triceps and trapezoid muscles.
- Reduction of muscular vibration
- Breathable
- Insertion of high quality Elasthane fibres for permanent maintenance of the garment's shape
- Seamless elastic fabric

- Maillot à manches courtes avec col rond conçu pour améliorer la posture et le rendement
- Exosquelette pour soutien postural
- Soutien ciblé pour les muscles de la partie haute du dos, les articulations des épaules et la coiffe des rotateurs.
- Soutien extra pour les coudes et les muscles des bras
- Bandes élastiques internes de soutien du deltoïde, du triceps et du trapèze
- Réduction des vibrations musculaires
- Respirant
- Introduction de fibres Elastan de haute qualité pour toujours maintenir la forme du vêtement.
- Tissu élastique sans coutures

# CALEYO

ACTIVE  
TENS

2024		MADE IN ITALY	OEKO-TEX® STANDARD 100 CERTIFIED	ADULT	S/M/L/XL/XXL	U708
				JUNIOR	XS	U709

91% POLYAMIDE 9% ELASTAN



003708  
white/cyan



000772  
black/yellow fluo

Fino ad esaurimento scorte  
While stocks last  
Jusqu'à épuisement du stock

- 3/4 che aiuta l'allineamento posturale di fianchi, cosce e dell'articolazione rotulea
- Esoscheletro altamente flessibile
- Supporto mirato per fianchi e ginocchia
- Traspiranti
- Inserimento di fibre di Elastan di alta qualità per mantenere sempre la forma dell'indumento
- Tessuto elastico senza cuciture

- 3/4 trousers that assist the postural training of hips, thighs and patellar articulation
- Highly flexible exoskeleton
- Targeted supports for hips and knees
- Breathable
- Insertion of high quality Elasthane fibres for permanent maintenance of the garment's shape
- Seamless elastic fabric

- Pantalon 3/4 qui aide l'alignement postural des hanches, des cuisses et de l'articulation rotulienne
- Exosquelette très flexible
- Support ciblé pour hanches et genoux
- Respirant
- Introduction de fibres Elastan de haute qualité pour toujours maintenir la forme du vêtement.
- Tissu élastique sans coutures

# ARRIUS

ACTIVE  
TENS

2024		MADE IN ITALY	OEKO-TEX® STANDARD 100 CERTIFIED	ADULT	S/M/L/XL/XXL	U705
				JUNIOR	XS	U706

91% POLYAMIDE 9% ELASTAN



003708  
white/cyan



000772  
black/yellow fluo

Fino ad esaurimento scorte  
While stocks last  
Jusqu'à épuisement du stock

- Progettato per sostenere quadricipiti, flessori e glutei
- Esoscheletro a supporto posturale.
- Ridotta vibrazione muscolare
- Traspiranti
- Inserimento di fibre di Elastan di alta qualità per mantenere la forma dell'indumento
- Tessuto elastico senza cuciture

- Targeted support for quadriceps, flexors and glutes.
- Exoskeleton for postural support.
- Reduced muscular vibration.
- Breathable.
- Insertion of high quality Elasthane fibres for permanent maintenance of the garment's shape
- Seamless elastic fabric

- Soutien ciblé pour quadriceps, fléchisseurs et fesses
- Exosquelette de soutien postural.
- Vibrations musculaires réduites
- Respirant
- Introduction de fibres Elastan de haute qualité pour toujours maintenir la forme du vêtement.
- Tissu élastique sans coutures



## ACTIVE TENSE® LITE

Dopo oltre due anni di ricerca, Erreà® presenta il nuovo Active Tense® Lite.

Gli innovativi capi della linea AT Lite si rivolgono a chi non vuole rinunciare al supporto ergonomico posturale di Active Tense® nella vita quotidiana. Il tessuto estremamente leggero, il design ton su ton e il collo a "V" della maglia rendono i capi AT Lite eleganti, comodi e confortevoli, ideali per essere indossati in qualunque momento della giornata. Allo stesso tempo, l'esoscheletro termosaldato e la costruzione del capo in zone a tensione differenziata offrono un sostegno efficace ad articolazioni e gruppi muscolari contribuendo a migliorare la performance e favorendo il recupero nel dopo gara, allenamento o post-infortunio.

## ACTIVE TENSE® LITE

Following more than two years of research, Erreà® presents the new Active Tense® Lite.

The innovative AT Lite apparel is designed for those who want the ergonomic posture support of Active Tense® also in their daily lives. The ultralight fabric, single-colour, "V" neck design of the shirts make AT Lite garments elegant and comfortable, and ideally suited for use at any time during the day. In addition, the heatwelded exoskeleton and the differentiated fitting point construction of the garment provide effective support to joints and muscle groups for improved performance and recovery-rates after competitions, training and injuries.

## ACTIVE TENSE® LITE

Après plus de deux ans de recherches, Erreà® présente le nouvel Active Tense® Lite.

Les vêtements innovants de la ligne AT Lite ont été conçus pour ceux qui ne peuvent pas se passer du soutien ergonomique postural d'Active Tense® dans leur activités quotidiennes. Le tissu extrêmement léger, le design ton sur ton et le col en V de ce maillot rendent les vêtements AT Lite élégants, pratiques et confortables, idéaux pour être portés dans toutes les occasions et à tout moment de la journée. En même temps, l'exosquelette thermo-soudé et la structure du vêtement en zones à tension différenciée offrent un soutien efficace aux articulations et aux groupes musculaires permettant d'améliorer la performance et favorisant la récupération après la compétition, l'entraînement ou un accident.

2024	MADE IN ITALY	OEKO-TEX® CONFIDENCE IN TEXTILES STANDARD 100 074744.0 CENTROCOT Tested for harmful substances. www.oeko-tex.com/standard100	ADULT	S/M/L/XL/XXL	UMO10C
			JUNIOR	XS	UMO11C

94% POLYAMIDE 6% ELASTAN



- Maglia collo a giro, dotata di zone a tensione differenziata ed esoscheletro in resina
- L'esoscheletro in resina si concentra sulla parte superiore del corpo con lo scopo di stabilizzare le spalle e migliorare la postura
- Le fasce elastiche interne sono studiate e realizzate per sostenere il deltoide e il trapezio
- Le zone a tensione differenziata grazie ai diversi attriti determinano effetti stabilizzatori sui muscoli e sulle articolazioni

- Short-sleeve shirt crew neck with differentiated tension zones and exoskeleton in resin
- The resin exoskeleton is positioned and concentrated on the upper part of the body for the purpose of stabilizing the shoulders and improving posture
- The inner elastic bands are designed and produced to support the deltoid and trapezoid muscles
- The differentiated tension zones, because of different frictions, have stabilizing effects on the muscles and joints

- Maillot col rond à manches courtes avec des zones à tension différenciée et un exosquelette en résine
- L'exosquelette en résine est positionné et se concentre sur la partie supérieure du corps dans le but de stabiliser les épaules et d'améliorer la posture
- Les bandes élastiques internes ont été étudiées et réalisées pour soutenir le deltoïde et le trapèze
- Les zones à tension différenciée grâce aux différents frottements déterminent des effets stabilisateurs sur les muscles et sur les articulations

2024	MADE IN ITALY	OEKO-TEX® CONFIDENCE IN TEXTILES STANDARD 100 074744.0 CENTROCOT Tested for harmful substances. www.oeko-tex.com/standard100	ADULT	S/M/L/XL/XXL	UPO60Z
			JUNIOR	XS	UPO61Z

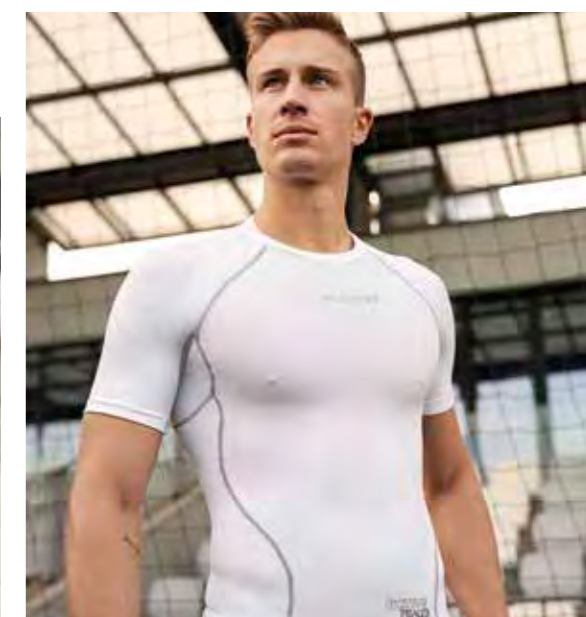
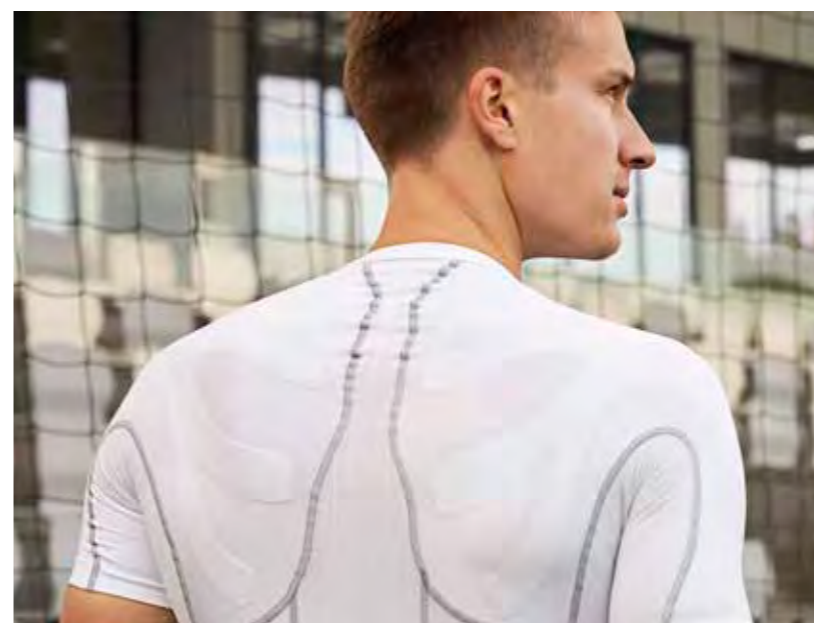
94% POLYAMIDE 6% ELASTAN



- Dotato di zone a tensione differenziata ed esoscheletro in resina
- L'esoscheletro in resina si concentra sui principali muscoli della coscia per migliorarne la funzionalità
- Le fasce elastiche interne sono realizzate per sostenere i quadricipiti e i flessori e creano un importante supporto alle fasce e alla muscolatura degli adduttori
- La vibrazione muscolare risulta sensibilmente ridotta

- Bermudas with differentiated tension zones and exoskeleton in resin
- The resin exoskeleton is concentrated on the main muscles of the thigh to improve their function
- The inner elastic bands are provided to support the quadriceps and flexors, and create an important support to the muscle fibres of the adductors
- Muscular vibration is noticeably reduced

- Bermuda avec des zones à tension différenciée et un exosquelette en résine.
- L'exosquelette en résine se concentre sur les principaux muscles de la cuisse pour en améliorer la fonctionnalité.
- Les bandes élastiques internes, réalisées pour soutenir les quadriceps et les fléchisseurs, créent un important soutien aux bandes et à la musculature des adducteurs.
- Les vibrations musculaires sont sensiblement réduites



# DARYL



2024



ADULT

S/M - L/XL - XXL

UMOB0L

JUNIOR

XXS - XS

UMOB1L

85% POLYAMIDE 10% POLYESTER 5% ELASTANE

- Manica a giro
- Collo a lupetto
- Inserti tridimensionali localizzati nella parte superiore
- Alta traspirabilità
- Rapido assorbimento del sudore
- Effetto "second skin"
- Tecnologia Seamless
- Isolamento termico
- Estrema leggerezza
- Taschino posteriore porta GPS
- Made in Italy

- Set-in sleeves
- Turtleneck
- Three-dimensional inserts on upper portion
- Optimum breathability
- Rapid sweat absorption
- "Second skin" effect
- Seamless technology
- Thermal insulation
- Extreme lightness
- Back pocket for GPS
- Made in Italy

- Manches montées
- Col montant
- Pièces tridimensionnelles situées dans la partie supérieure
- Grande respirabilité
- Absorption rapide de la transpiration
- Effet « deuxième peau »
- Technologie sans coutures
- Isolation thermique
- Légèreté extrême
- Petite poche arrière porte-GPS
- Made in Italy



00120  
black



00020  
red



00010  
white



00090  
navy



00070  
blue

# DAVOR



2024



ADULT

S/M - L/XL - XXL

UMOC0L

JUNIOR

XXS - XS

UMOC1L

85% POLYAMIDE 10% POLYESTER 5% ELASTANE

- Manica e collo a giro
- Inserti tridimensionali localizzati nella parte superiore per mantenere il corpo asciutto e caldo
- Alta traspirabilità
- Rapido assorbimento del sudore
- Effetto "second skin"
- Tecnologia Seamless
- Isolamento termico
- Estrema leggerezza
- Taschino posteriore porta GPS
- Made in Italy

- Set-in sleeves and crew neck
- Three-dimensional inserts on upper portion
- Optimum breathability
- Rapid sweat absorption
- "Second skin" effect
- Seamless technology
- Thermal insulation
- Extreme lightness
- Back pocket for GPS
- Made in Italy

- Manches montées et col rond
- Pièces tridimensionnelles situées dans la partie supérieure
- Grande respirabilité
- Absorption rapide de la transpiration
- Effet « deuxième peau »
- Technologie sans coutures
- Isolation thermique
- Extrême légèreté
- Petite poche arrière porte-GPS
- Made in Italy



00090  
navy



00020  
red



00010  
white



00120  
black



00040  
green



00130  
orange



00150  
maroon



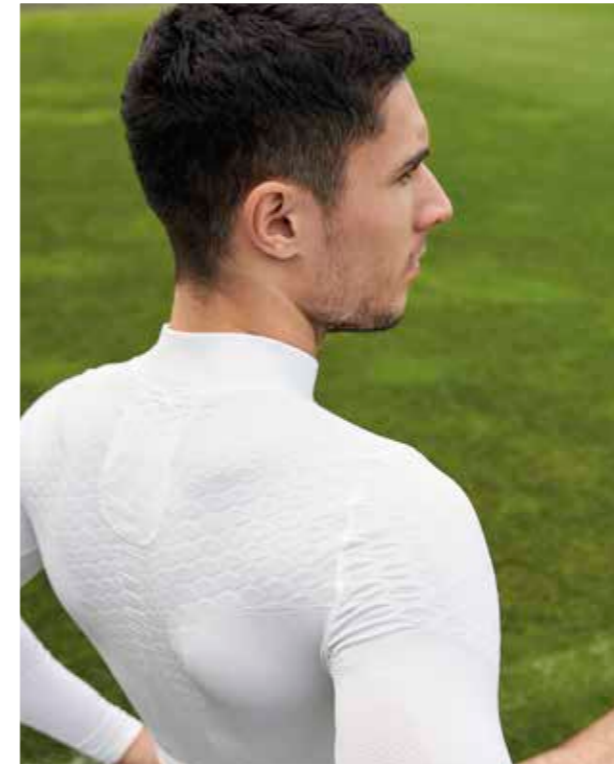
00070  
blue



00030  
yellow



00060  
fuchsia



# DAVID



2024



ADULT

S/M - L/XL - XXL

UMOD0C

JUNIOR

XS

UMOD1C

85% POLYAMIDE 10% POLYESTER 5% ELASTANE

- Manica e collo a giro
- Inserti tridimensionali localizzati nella parte superiore per mantenere il corpo asciutto e caldo
- Alta traspirabilità
- Rapido assorbimento del sudore
- Effetto "second skin"
- Tecnologia Seamless
- Isolamento termico
- Estrema leggerezza
- Taschino posteriore porta GPS
- Made in Italy

- Set-in sleeves and crew neck
- Three-dimensional inserts on upper portion
- Optimum breathability
- Rapid sweat absorption
- "Second skin" effect
- Seamless technology
- Thermal insulation
- Extreme lightness
- Back pocket for GPS
- Made in Italy

- Manches montées et col rond
- Pièces tridimensionnelles situées dans la partie supérieure
- Grande respirabilité
- Absorption rapide de la transpiration
- Effet « deuxième peau »
- Technologie sans coutures
- Isolation thermique
- Extrême légèreté
- Petite poche arrière porte-GPS
- Made in Italy



00120  
black



00020  
red



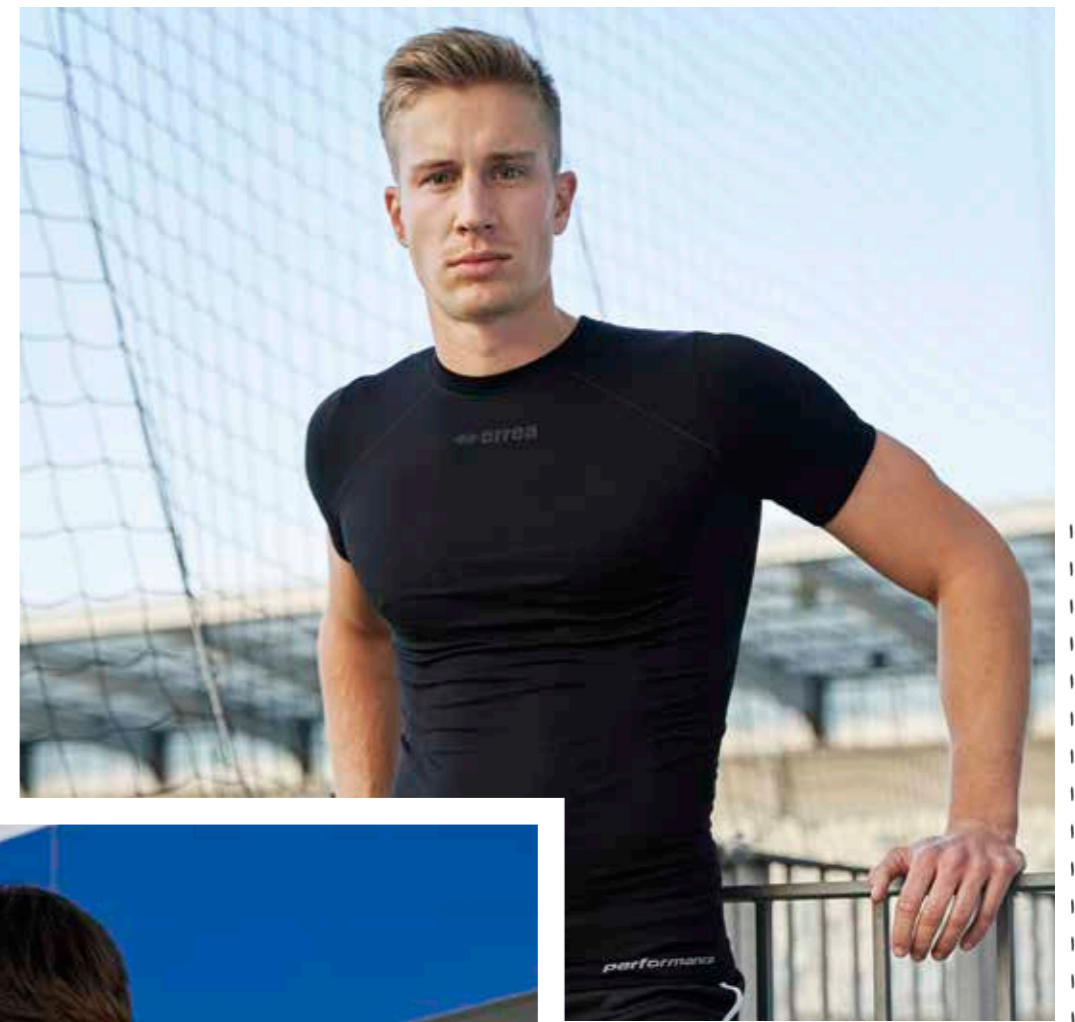
00010  
white



00090  
navy



00070  
blue



# ENYA



2024



ADULT

S/M - L/XL - XXL

UMOF0Z

JUNIOR

XS

UMOF1Z

85% POLYAMIDE 15% POLYESTER

- Collo a giro
- Alta traspirabilità
- Rapido assorbimento e dispersione del sudore
- Effetto "second skin"
- Tecnologia Seamless
- Ideale regolazione termica corporea
- Estrema leggerezza
- Taschino posteriore porta GPS
- Made in Italy

- Crew neck
- Optimum breathability
- Rapid absorption and elimination of sweat
- "Second skin" effect
- Seamless technology
- Ideal body temperature regulation
- Extreme lightness
- Back pocket for GPS
- Made in Italy

- Col rond
- Grande respirabilité
- Absorption rapide et dispersion de la transpiration
- Effet « deuxième peau »
- Technologie sans coutures
- Régulation thermique corporelle idéale
- Extrême légèreté
- Petite poche arrière porte-GPS
- Made in Italy



00120  
black



00010  
white



00090  
navy



# DARIS

2024



ADULT	S/M - L/XL - XXL/3XL	FMOB0L
JUNIOR	YXS - XXS/XS	FMOB1L

90% POLYESTER 10% ELASTANE

- Manica raglan
- Collo a giro
- Ideale per il periodo invernale
- Isolamento termico
- Raglan sleeve
- Crew neck
- Ideal for wintertime
- Thermal insulation
- Manches raglan
- Ras du cou
- Idéal pour la période hivernale
- Isolation thermique



# DAWE

2024



ADULT	S/M - L/XL - XXL/3XL	FPOB0Z
JUNIOR	YXS - XXS/XS	FPOB1Z

90% POLYESTER 10% ELASTANE

- Elasticizzati
- Elastico in vita
- Elasticated
- Elastic waistband
- Elasticité
- Ceinture élastique



# LANA COTONE

2024



ADULT	M/L/XL	A3010
JUNIOR	XS	A3011

46% POLYESTER 46% COTTON 5% NYLON

Package of 5 pieces for size.

- Manica a giro
- Collo a giro
- Isolamento termico
- Mantiene il corpo asciutto e caldo
- Set-in sleeves
- Crew neck
- Thermal insulation
- It keep the body warm and dry
- Manches montées
- Col rond
- Isolation thermique
- Il garde le corps sec et chaud



TRENTINO 3.0



PREMIER 82% POLYESTER 18% ELASTANE - 165 g/mq

ADULT PMDQ3C

MIN. 16 PCS  
min. 4 per size with multiples of 2



BESSY RAY WOMAN



PREMIER 82% POLYESTER 18% ELASTANE - 165 g/mq  
MUNDIAL 100% POLYESTER - 145 g/mq

ADULT PM803C

JUNIOR

PM804C

MIN. 16 PCS  
min. 4 per size with multiples of 2

PREMIER  
MUNDIAL



SENZA INSERTI - WITHOUT INSERTS - SANS INSERTS



**LISA WOMAN**



- MUNDIAL 100% POLYESTER - 145 g/mq
- TI-ENERGY 3.0 100% POLYESTER - 130 g/mq

ADULT **PMJP3S** JUNIOR **PMJP4S**

MIN. 16 PCS  
min. 4 per size with multiples of 2



SENZA INSERTI - WITHOUT INSERTS - SANS INSERTS

**LUCK**



- MUNDIAL 100% POLYESTER - 145 g/mq
- TI-ENERGY 3.0 100% POLYESTER - 130 g/mq

ADULT **PMJK3S** JUNIOR **PMJK4S**

MIN. 16 PCS  
min. 4 per size with multiples of 2



SENZA INSERTI - WITHOUT INSERTS - SANS INSERTS

**SIDE**



- MUNDIAL 100% POLYESTER - 145 g/mq
- TI-ENERGY 3.0 100% POLYESTER - 130 g/mq

ADULT **FM440C / FM440L** JUNIOR **FM441C / FM441L**

MIN. 16 PCS  
min. 4 per size with multiples of 2



SENZA INSERTI - WITHOUT INSERTS - SANS INSERTS

**SIDE WOMAN**



- MUNDIAL 100% POLYESTER - 145 g/mq
- TI-ENERGY 3.0 100% POLYESTER - 130 g/mq

ADULT **PMJ63C / PMJ63L** JUNIOR **PMJ64C / PMJ64L**

MIN. 16 PCS  
min. 4 per size with multiples of 2



SENZA INSERTI - WITHOUT INSERTS - SANS INSERTS

**HELENS WOMAN**



- MUNDIAL 100% POLYESTER - 145 g/mq
- TI-ENERGY 3.0 100% POLYESTER - 130 g/mq

ADULT **PMCK3S** JUNIOR **PMCK4S**

MIN. 16 PCS  
min. 4 per size with multiples of 2



SENZA INSERTI - WITHOUT INSERTS - SANS INSERTS

**ANSI L/S WOMAN**



- PREMIER 82% POLYESTER 18% ELASTANE - 165 g/mq

ADULT **PMDH3L** JUNIOR **PMDH4L**

MIN. 16 PCS  
min. 4 per size with multiples of 2



SENZA INSERTI - WITHOUT INSERTS - SANS INSERTS

**LUCAS**



- MUNDIAL 100% POLYESTER - 145 g/mq
- TI-ENERGY 3.0 100% POLYESTER - 130 g/mq

ADULT **PMJD3C / PMJD3L** JUNIOR **PMJD4C / PMJD4L**

MIN. 16 PCS  
min. 4 per size with multiples of 2



SENZA INSERTI - WITHOUT INSERTS - SANS INSERTS

**LENNY WOMAN**



- MUNDIAL 100% POLYESTER - 145 g/mq
- TI-ENERGY 3.0 100% POLYESTER - 130 g/mq

ADULT **PMIY3C / PMIY3L** JUNIOR **PMIY4C / PMIY4L**

MIN. 16 PCS  
min. 4 per size with multiples of 2



SENZA INSERTI - WITHOUT INSERTS - SANS INSERTS

### TRANSFER 3.0



- MUNDIAL 100% POLYESTER - 145 g/mq
- TI-ENERGY 3.0 100% POLYESTER - 130 g/mq

ADULT **FP740Z** JUNIOR **FP741Z**

MIN. 16 PCS  
min. 4 per size with multiples of 2



### BOLTON



- MUNDIAL 100% POLYESTER - 145 g/mq
- TI-ENERGY 3.0 100% POLYESTER - 130 g/mq

ADULT **D195** JUNIOR **D196**

MIN. 16 PCS  
min. 4 per size with multiples of 2



### NEW SKIN



- SKIN 100% POLYESTER - 125 g/mq
- MUNDIAL 100% POLYESTER - 145 g/mq

ADULT **A245** JUNIOR **A246**

MIN. 16 PCS  
min. 4 per size with multiples of 2



NEW SKIN  
STANDARD LENGTH

MAXI SKIN  
LONGER LENGTH



1



2

### TRENTINO



- MUNDIAL 100% POLYESTER - 145 g/mq
- SKIN 100% POLYESTER - 125 g/mq

ADULT **PPOY3Z** JUNIOR **PPOY4Z**

MIN. 16 PCS  
min. 4 per size with multiples of 2



### VIGOR



- MUNDIAL 100% POLYESTER - 145 g/mq
- SKIN 100% POLYESTER - 125 g/mq

ADULT **PPT73Z** JUNIOR **PPT74Z**

MIN. 16 PCS  
min. 4 per size with multiples of 2



### PREMIER WOMAN



- SCUBA 80% POLYESTER 20% ELASTANE - 180 g/mq

ADULT **PP1Y3Z** JUNIOR **PP1Y4Z**

MIN. 16 PCS  
min. 4 per size with multiples of 2



1



2



PRAGA 3.0



B-HIVE 100% POLYESTER - 135 g/mq

ADULT FM953C / FM953L JUNIOR FM954C / FM954L

MIN. 16 PCS  
min. 4 per size with multiples of 2



ALEX



MUNDIAL 100% POLYESTER - 145 g/mq

ADULT GMOK3C / GMOK3L JUNIOR GMOK4C / GMOK4L

MIN. 16 PCS  
min. 4 per size with multiples of 2



ALEXIS WOMAN



MUNDIAL 100% POLYESTER - 145 g/mq

ADULT GMOL3C / GMOL3L JUNIOR GMOL4C / GMOL4L

MIN. 16 PCS  
min. 4 per size with multiples of 2



BRAD



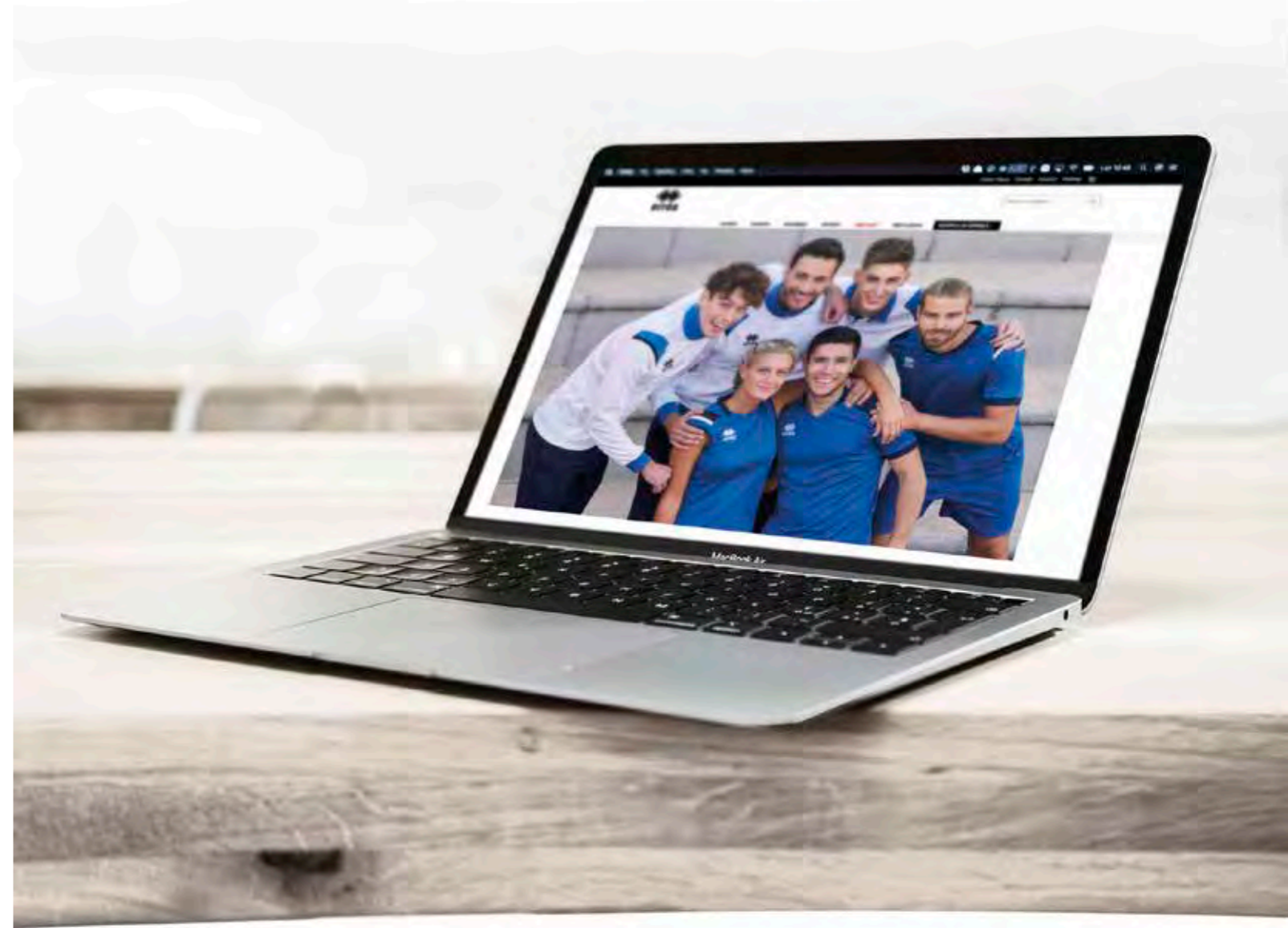
FULL 100% POLYESTER - 240 g/mq

ADULT PG3X3Z JUNIOR PG3X4Z

MIN. 50 PCS  
min. 4 per size with multiples of 2



TASCHE LATERALI CON CERNIERA / ZIP POCKETS ON SIDES / POCHES LATÉRALES ZIPPÉES



Trovi il catalogo completo nell'area download  
Find the complete catalogue in the Download area  
Vous trouvez le catalogue complet dans la section download

[www.erre.com](http://www.erre.com)

# SIZE CHART

Se sei al limite tra due taglie, ordina quella immediatamente più piccola per una vestibilità più aderente o quella immediatamente più grande per una vestibilità più comoda.

If you are in between sizes, order the smaller size for a snugger fit or the larger one if you prefer a more comfortable fit.

Si vous êtes juste entre deux tailles, commandez la plus petite pour une coupe plus ajustée ou la plus grande pour une coupe plus confortable.



TAGLIE UOMO / SIZES MAN / TAILLES HOMME										
	EU	IT	TORACE CHEST POITRINE		VITA WAIST TAILLE		FIANCHI HIPS FLANCS		ALTEZZA HEIGHT HAUTEUR	
			cm	inches	cm	inches	cm	inches	cm	inches
KID	3YXS	22-24							98-108	39-42.5
	2YXS	26-28							110-120	42.5-47.2
JUNIOR	YXS	30-32	64-72	25-28	54-60	21.26-24	66-74	26-29	122-132	48-52
	XXS	34-36	72-80	28-31	60-66	24-26	74-82	29-32	134-144	52.8-56.7
	XS	38-40	80-88	31-35	66-72	26-28	82-90	32-35	146-156	57.5-61.4
ADULT	S	42-44	90-94	35-37	72-76	28-30	92-96	36-38	167-172	65.7-67.7
	M	46-48	94-98	37-39	76-80	30-31	96-100	38-39.4	173-178	68.1-70.1
	L	50-52	98-102	39-40.2	80-84	31-33	100-104	39.4-40.9	179-184	70.5-72.4
	XL	54	102-106	40.2-41.7	84-88	33-35	104-108	40.9-42.5	185-190	72.8-74.8
	XXL	56	106-110	41.7-43.3	88-92	35-36	108-112	42.5-44.1	191-196	75.2-77.2
	3XL	58	110-114	43.3-44.9	92-94	36-37	112-116	44.1-45.7	197-202	77.6-79.5
4XL	60	114-118	44.9-46.5	94-96	37-38	116-120	45.7-47.2	203-208	79.9-81.9	

TAGLIE DONNA / SIZES WOMAN / TAILLES FEMME										
	EU	IT	TORACE CHEST POITRINE		VITA WAIST TAILLE		FIANCHI HIPS FLANCS		ALTEZZA HEIGHT HAUTEUR	
			cm	inches	cm	inches	cm	inches	cm	inches
KID	3YXS	24-26							98-108	39-42.5
	2YXS	26-28							110-120	42.5-47.2
JUNIOR	YXS	30-32	64-72	25-28	54-60	21.26-24	66-74	26-29	122-132	48-52
	XXS	34-36	72-80	28-31	60-66	24-26	74-82	29-32	134-144	52.8-56.7
	XS	38-40	80-88	31-35	66-72	26-28	82-92	32-36	146-156	57.5-61.4
ADULT	S	42-44	84-88	33-35	68-72	27-28	92-96	36-38	164-168	64.6-66.1
	M	46-48	88-92	35-36	72-76	28-30	96-100	38-39.4	169-173	66.5-68.1
	L	50-52	92-96	36-38	76-80	30-31	100-104	39.4-40.9	174-178	68.5-70.1
	XL	54	96-100	38-39.4	80-84	31-33	104-108	40.9-42.5	179-183	70.5-72
	XXL	56	100-104	39.4-40.9	84-88	33-35	108-112	42.5-44.1	184-188	72.4-74
	3XL	58	104-108	40.9-42.5	88-92	35-36	112-116	44.1-45.7	189-193	74.4-76
4XL	60	108-112	42.5-44.2	92-96	36-38	116-120	45.7-47.2	194-198	76.4-78	

## GUANTI / GLOVES / GANTS

Per prendere la misura giusta della larghezza della mano, segui esattamente il disegno illustrativo.

Follow the drawing to measure the hand's width in the proper way and use the chart to figure out which size best fits your hand.

Pour mesurer la largeur de la main suivre le dessin et le tableau.



GLOVES SIZING CHART								
7,5	8	8,5	9	9,5	10	10,5	11	
8,2 cm	8,5 cm	8,8 cm	9,1 cm	9,4 cm	9,7 cm	10 cm	10,3 cm	



## SIZE GUIDE

Misura la circonferenza della tua gamba 15 cm sotto la tua rotula.

Measure the circumference of your leg at a point 15 cm below the middle of your kneecap.

Mesure ton tour de jambe 15 cm au-dessous de la rotule.

KNEEPAD SIZING CHART		
	cm	inches
XS	30-33	12-13
S	33-35	13-13,7
M	35-37	13,7-14,5
L	37-40	14,5-15,7
XL	40-45	15,7-17,7

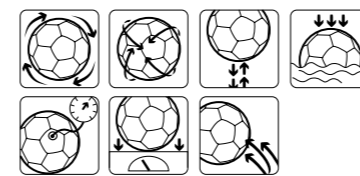


SOCKS SIZING CHART							
SIZE	KID	JR	AD	XS	M	L	XL
EU	35/38	39/42	42/46	31/34	35/38	39/42	43/47
USA	3.5/6	7/9	9/12	1/3	3.5/6	7/9	10/13
UK	2.5/5	6/8	8/11	12.5/2	2.5/5	6/8	9/12



SHOES SIZING CHART															
EU	35	36	37	38	39	40	41	42	43	44	45	46	47	48	
USA	3.5	4	5	6	7	7.5	8	9	10	10.5	11	12	13	14	
UK	2.5	3	4	5	6	6.5	7	8	9	9.5	10.5	11	12	13	

## PALLONI/ BALLS / BALLON



Terreni asciutti  
Dry grounds



Terreni con neve  
Ground covered with snow



Terreni con fango e pioggia  
Muddy and wet grounds



Indoor



Terreni con erba sintetica  
Artificial pitch

# WASHING AND GARMENT CARE

## IT

Per garantire i più alti standard qualitativi dei capi, Erreà controlla e verifica scrupolosamente tutti i tessuti impiegati.

Le fibre naturali del cotone, i tessuti tecnici e le felpe riescono a mantenere inalterate nel tempo le loro caratteristiche e il loro comfort se trattate con la massima cura.

Vi consigliamo pertanto di leggere con attenzione i consigli d'uso, di lavaggio e di manutenzione riportati sulle etichette dei capi.

## EN

To guarantee the highest possible quality standards for all garments, Erreà scrupulously control all the fabrics utilised in production.

The natural cotton, technical fabrics and sweatshirt materials will maintain their characteristics and comfort over time, if cared for correctly.

We therefore ask that you read carefully, the washing and maintenance instructions found on the label of each garment.

## FR

Pour assurer la meilleure qualité, Erreà vérifie et contrôle les tissus utilisés.

Les fibres naturelles du coton, les tissus techniques et le molleton gardent intactes dans le temps leurs caractéristiques s'ils sont traités avec attention et soin.

Nous vous recommandons, donc, de suivre attentivement les étiquettes avec les conseils pour l'utilisation, le lavage et la maintenance des produits.



L'etichetta con i consigli di lavaggio è specifica per ogni indumento. Erreà garantisce che potete seguire i suoi consigli alla "lettera".

The washing instructions label is specific for every garment. Please follow it carefully.

L'étiquette pour les conseils de lavage est spécifique pour chaque article. Erreà assure que ses conseils sont à suivre "à la lettre".

## LAVAGGIO / WASHING / LAVAGE

Lavare in lavatrice (max. 30°)  
Washing temperature max 30°  
Lavage machine (max 30°)

## CANDEGGIO / BLEACHING / BLANCHIMENT

Non utilizzare candeggina  
Do not bleach  
Ne pas utiliser de produits blanchissants

## LAVAGGIO A SECCO / DRY CLEANING / NETTOYAGE A SEC

Utilizzare i solventi in uso (salvo la trielina)  
Do not use trichloroethylene  
Utiliser les solvants en commerce sauf le trichloréthylène

Non lavare a secco  
Do not dry-cleaning  
Ne pas nettoyer à sec

## ASCIUGATURA / DRYING / SECHAGE

Non utilizzare l'asciugatrice  
Do not tumble dry  
Ne pas utiliser le séchoir

## STIRATURA / IRONING / REPASSAGE

Stirare a temperatura dolce senza vapore (110°C)  
Iron at mild temperature without steam (110°C)  
Repasser à température douce sans vapeur

Non stirare  
No steam  
Ne pas repasser

# DIAMANTIS

ELEGANTE, SOFISTICATO, ORIGINALE.

Traspirazione, isolamento termico, tenuta del calore, libertà di movimento.

Il nuovo coordinato Diamantis, si caratterizza per eleganza grazie alla stripe con stampa transfer che ne definisce l'estetica moderna. L'applicazione delle letture permette di sfoggiare con orgoglio i colori della tua squadra. Ideale per chi è alla ricerca di un look moderno e attuale, caratterizzato da dettagli sofisticati che esaltano l'estetica e lo stile.

L'intera gamma di prodotti è realizzata con maniche raglan per garantire la massima libertà di movimento in ogni situazione, in campo e fuori.

I tessuti con cui sono realizzati i capi permettono di creare diverse combinazioni di strati per esaudire le diverse esigenze tecniche per le performance in campo e per il tempo libero.

Isolamento termico, traspirazione e leggerezza rappresentano le caratteristiche distinte di questa linea mentre gli inserti in full garantiscono una protezione termica ottimale. Disponibile in diverse varianti colore, inserto in tinta e letture colorate sono state studiate ad hoc per esaltare i tuoi colori societari.

ELEGANT, SOPHISTICATED, ORIGINAL.

Breathability, thermal insulation, heat retention, freedom of movement.

The new Diamantis strip is elegant and characterized by a modern appearance thanks to the insert with sublimation printing. The application of stripes means you can wear your team's colours with pride.

Ideal for anyone seeking a modern and trendy look, characterized by sophisticated details which highlight the overall appearance and style.

The whole range of products is made with raglan sleeves to guarantee maximum freedom of movement in any situation, both on and off the field.

The fabrics used to manufacture the garments make it possible to create different combinations of layers to meet diverse technical requirements for performance on the field and during leisure time.

Thermal insulation, breathability and lightness are the distinctive features of this line, while the inserts in full fabric ensure maximum thermal protection.

Available in various colour schemes, matching insert and coloured stripes, they have been designed ad hoc to highlight your club's colours.

ÉLÉGANT, SOPHISTIQUE, ORIGINEL.

Transpiration, isolation thermique, conservation de la chaleur, liberté de mouvement.

La nouvelle tenue Diamantis est caractérisée par l'élégance et l'esthétique moderne que lui confère la bande imprimée par sublimation. L'application des extrarats permet d'arborez avec fierté les couleurs de votre équipe.

Tenue idéale pour tous ceux qui sont à la recherche d'un look moderne et actuel, caractérisé par des détails sophistiqués qui mettent en valeur l'esthétique et le style. La gamme de produits est entièrement réalisée avec des manches raglan pour une liberté maximale de mouvement en toute situation, sur le terrain et en dehors.

Les tissus avec lesquels sont réalisés les articles permettent de créer différentes combinaisons de couches répondant aux diverses exigences techniques pour les performances sur le terrain et pendant les loisirs.

Isolation thermique, transpiration et légèreté sont les caractéristiques distinctives de cette ligne, dans laquelle les empièchements en full garantissent une protection thermique optimale.

Disponibles dans plusieurs variantes de couleur, l'empieçement de teinte identique et les extrarats colorés ont été spécialement étudiés pour rehausser les couleurs de votre club.



# LUCAS

RICERCATO, FUNZIONALE, VERSATILE.

Comfort, traspirazione, regolazione del calore corporeo

Il coordinato Lucas presenta una linea elegante, lineare con inserti in contrasto sulle spalle che non ostacolano il naturale movimento grazie a cuciture appositamente studiate, anche durante la gara.

Ideale per chi è alla ricerca di un look classico, attento alla cura dei più minuti dettagli. L'intera gamma di prodotti è realizzata con maniche raglan per garantire la massima libertà di movimento in ogni situazione, in campo e fuori.

I tessuti disponibili permettono di creare soluzioni differenti per le diverse situazioni climatiche. Traspirazione, morbidezza e resistenza sono le caratteristiche tecniche principali di questa linea.

Disponibile in diverse varianti colore a base classica con inserti in contrasto sono ideati per rappresentare al meglio i colori della tua squadra.

REFINED, FUNCTIONAL, VERSATILE.

Comfort, breathability, body temperature regulation.

The Lucas strip presents an elegant, linear look with contrasting inserts on the shoulders which, thanks to the specially designed seams, never hinder natural movements, not even during matches.

Ideal for those seeking a classic look, attentive to even the smallest detail. The whole range of products is made with raglan sleeves to guarantee maximum freedom of movement in any situation, both on and off the field.

The fabrics available make it possible to create different solutions for different climatic conditions.

Breathability, softness and strength are the main technical features of this line. Available in various classic colour schemes with contrasting inserts they are ideal for really showing off your team's colours.

PRISÉ, FONCTIONNEL, VERSATILE.

Confort, transpiration, réglage de la chaleur corporelle

La tenue Lucas possède une ligne élégante, linéaire, avec des empièchements en contraste sur les épaules qui n'entravent pas le mouvement naturel, même pendant les compétitions, grâce à des coutures spécialement étudiées.

Tenue idéale pour tous ceux qui veulent un look classique, attentif au soin des moindres détails.

La gamme de produits est entièrement réalisée avec des manches raglan pour une liberté maximale de mouvement en toute situation, sur le terrain et en dehors.

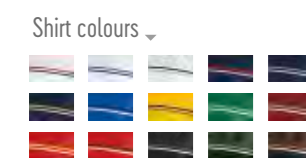
Les tissus disponibles permettent de créer de nombreuses solutions répondant aux différentes conditions climatiques.

Transpiration, souplesse et résistance sont les principales caractéristiques techniques de cette ligne.

Disponibles en différentes variantes de couleur à base classique, avec des empièchements en contraste, ils représentent de manière idéale les couleurs de votre équipe.

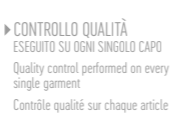
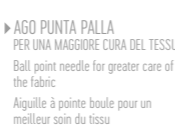


## Look DIAMANTIS



98 | 2022 COLLECTION

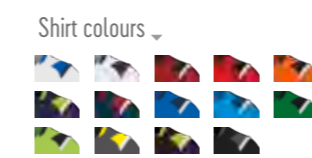
## PRODUCTION



Look's fabrics

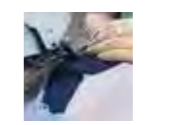
- MUNDIAL
- CARBON
- MICROSOFT
- PIQUET
- WARM UP

## Look LUCAS



98 | 2022 COLLECTION

## PRODUCTION



Look's fabrics

- MUNDIAL
- PIQUET
- WARM UP

98 | 2022 COLLECTION

# BRANDON

## PRATICO, DINAMICO, COLORATO.

Modernità, traspirazione, tenuta termica.  
 Il coordinato Brandon sfoggia due colori distinti che spezzano graficamente il capo donando un effetto di dinamicità e modernità.  
 Ottimo per chi è alla ricerca di un look moderno caratterizzato da dettagli che ne esaltano lo stile pratico.  
 Le tinte invernali della linea offrono una tenuta termica ottimale mentre le maglie gara a giaccollo garantiscono una traspirazione perfetta.  
 Ideale per chi ricerca un capo colorato e vivace e dalla vestibilità semi aderente.  
 Disponibile in diverse varianti colore, permette di soddisfare le diverse esigenze delle società sportive.

## PRACTICAL, DYNAMIC, VIBRANT.

Modernity, breathability, heat retention.  
 The Brandon strip boasts two distinct colours which graphically break up the garment, giving it a dynamic, modern effect.  
 Excellent for anyone seeking a modern look, characterized by details which highlight the practical style.  
 The winter sweatshirts in the line offer excellent heat retention while the round-neck match shirts guarantee perfect breathability.  
 Ideal for those looking for a colourful and bright garment with a semi-fitted design.  
 Available in various colour options, to meet the various needs of sports clubs.

## PRATIQUE, DYNAMIQUE, VIVANT.

Modernité, respiration parfaite, conservation optimale.  
 La tenue Brandon arbore deux couleurs distinctes qui « cassent » le graphisme de l'article en lui donnant un effet dynamique et moderne.  
 Excellent pour tous ceux qui sont à la recherche d'un look moderne caractérisé par des détails qui mettent en valeur son style pratique.  
 Les sweats d'hiver de cette ligne offrent une conservation optimale de la chaleur, alors que les maillots de compétition au col rond garantissent une respiration parfaite.  
 Idéal pour tous ceux qui recherchent un article coloré et vif avec une coupe semi-moulante.  
 Disponible dans plusieurs variantes de couleur, permet de répondre aux différentes exigences des clubs de sport.



# CLASSIC

## UNIVERSALE, MULTIFUNZIONALE, ATTUALE.

Versatilità, finezza, traspirazione.  
 Il coordinato Classic riunisce i capi sportivi che da sempre fanno parte di tutte le discipline sportive per dare vita a una linea sempre moderna e contemporanea.  
 Ideale per chi ama modelli classici e puliti.  
 Linea dalle caratteristiche versatili, permette di soddisfare le esigenze di differenti discipline.  
 Le maglie gara si caratterizzano per l'ottima traspirazione che assicurano.  
 Il tessuto con cui sono realizzati, asciuga velocemente, non squalisce e mantiene la piega anche dopo i lavaggi permettendo di evitare la stiratura.  
 Morbidità e resistenza distinguono i capi a manica lunga, ideali per le giornate più fredde.  
 Disponibili in una vasta gamma colori per soddisfare le richieste più esigenti e diversificate dei club sportivi.

## UNIVERSAL, MULTIFUNCTIONAL, CONTEMPORARY.

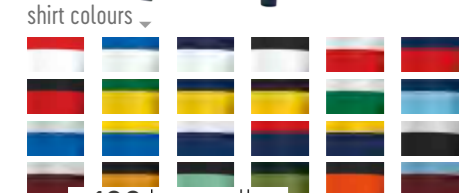
Versatility, elegance, breathability.  
 The Classic strip brings together sporting garments which have always been a part of all sporting disciplines to create a line which is forever modern and contemporary.  
 Ideal for those who love classic and clean styles.  
 This line with versatile characteristics makes it possible to meet the needs of different sporting categories.  
 The competition shirts are characterized by the excellent breathability they guarantee.  
 The fabric they are made of is quick drying, doesn't crease and holds its shape even after washing, so there's no need for ironing.  
 Softness and strength are the main features of the long-sleeve shirts, ideal for colder days.  
 Available in a wide range of colours to meet the most demanding and diversified requests of sporting clubs.

## UNIVERSEL, MULTIFONCTIONNEL, CONTEMPORAINE.

Flexibilité, finesse, respiration.  
 La tenue Classic réunit les articles de sport qui, depuis toujours, font partie de toutes les disciplines sportives, pour donner vie à une ligne toujours moderne et contemporaine.  
 Tenue idéale pour tous ceux qui aiment les modèles classiques et épurés.  
 Ligne aux caractéristiques polyvalentes permettant de répondre aux exigences de différentes disciplines.  
 Les maillots de compétition se caractérisent par l'excellente respiration qu'ils garantissent.  
 Le tissu avec lequel ils sont confectionnés sèche rapidement, ne se chiffonne pas et garde le pli même après les lavages, ce qui permet de ne pas avoir à les repasser.  
 Souplesse et résistance caractérisent les articles à manches longues, idéaux pour les journées les plus froides.  
 Disponibles dans une vaste gamme de couleurs pour répondre aux demandes les plus exigeantes et variées des clubs de sport.



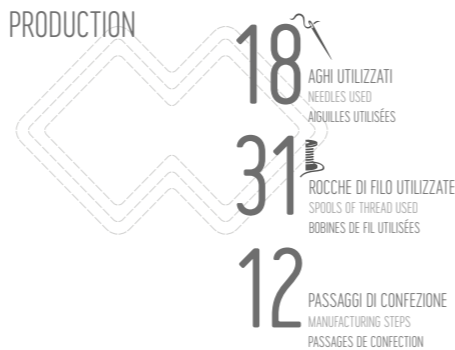
## Look BRANDON



### Look's fabrics

- ▶ SKIN
- ▶ MUNDIAL
- ▶ KAMELIA
- ▶ FULL
- ▶ PIQUET
- ▶ WARM-UP

## PRODUCTION



▶ 2 PASSAGGI IN 2 MACCHINE PER L'APPLICAZIONE FRONTALE  
 2 manufacturing steps with 2 machines for the front application  
 2 passages dans 2 machines pour l'application frontale

▶ 5 OPERAZIONI DI ASSEMBLAGGIO DEL TESSUTO  
 5 operations to assemble the fabric  
 5 opérations d'assemblage du tissu

▶ 1/3 DI PASSAGGI MANUALI  
 1/3 of the steps by hand  
 1/3 de passages manuels

▶ 3 MACCHINE DIFFERENTI UTILIZZATE  
 3 different machines used  
 3 machines différentes utilisées

▶ CONTROLLO QUALITÀ ESEGUITO SU OGNI SINGOLO CAPO  
 Quality control performed on every single garment  
 Contrôle qualité sur chaque article



## Look CLASSIC



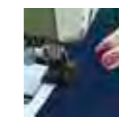
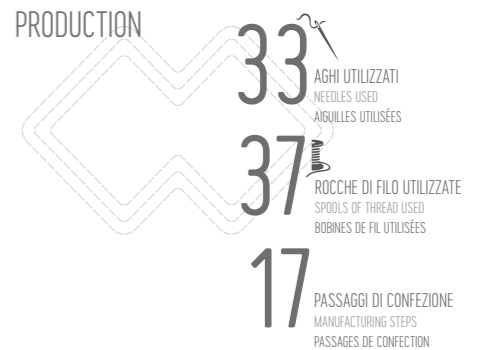
### Shirt colours LENNOX



### Look's fabrics

- ▶ UTILITY
- ▶ SKIN
- ▶ MUNDIAL
- ▶ PIQUET
- ▶ COTTON PIQUET
- ▶ KAMELIA
- ▶ B-HIVE
- ▶ RASIC

## PRODUCTION



▶ QUASI UN METRO DI SBIECO UTILIZZATO PER OGNI SINGOLA MAGLIA  
 Almost one metre of bias binding used for each shirt  
 Presque un mètre de biais utilisé pour chaque maillot

▶ 5 OPERAZIONI DI ASSEMBLAGGIO DEL TESSUTO  
 5 operations to assemble the fabric  
 5 opérations d'assemblage du tissu

▶ 3 PASSAGGI DI RIFINITURA  
 3 finishing steps  
 3 passages de finition

▶ CONTROLLO QUALITÀ ESEGUITO SU OGNI SINGOLO CAPO  
 Quality control performed on every single garment  
 Contrôle qualité sur chaque article

